

The closest you can come to the perfect shape...



PERFORMA

Wire rope with intertwined plastic profiles.



PERFORMA wire rope: plastic profiles intertwined between the strands make it a longrunning success.

So that you and your passengers can enjoy peace and mind...

The PERFORMA technology has been developed with the goal of eliminating strand-induced vibrations as far as is possible in traction and haulage operations. The solution – to a problem that increasingly occurs on today's high-speed ropeway systems – was finally found by the consistent approximation of the wire rope cross-section to a circle. This was made possible by a process that we have optimised over many years, which allows us to intertwine plastic profiles between the strands – and even colored ones on request. These profiles fill out the surrounding circular area almost completely, separate the strands spatially from one another and stabilize them in their position.

The result is impressive in every respect: thanks to the smooth surface structure, the wire rope runs over sheaves and bullwheels free of vibration and without noise. The strongly-reduced setting behavior of the complete wire rope bond and the correspondingly low permanent elongation are also impressive.

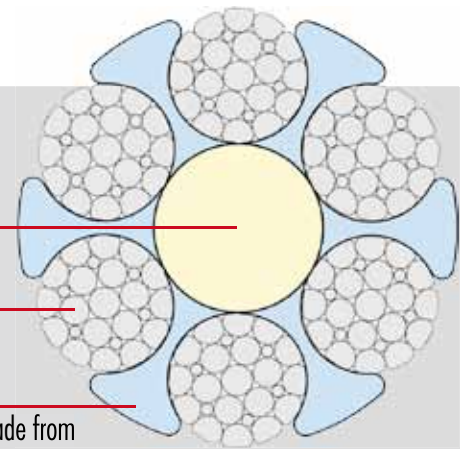
In short: the investment in PERFORMA wire ropes more than pays off over the long run.

PERFORMA wire rope are produced as follows:

core from extruded round polyethylene rod

six strands in compacted design

six extruded, fibre-reinforced filler profiles made from plastic, with high level of toughness and elongation at rupture

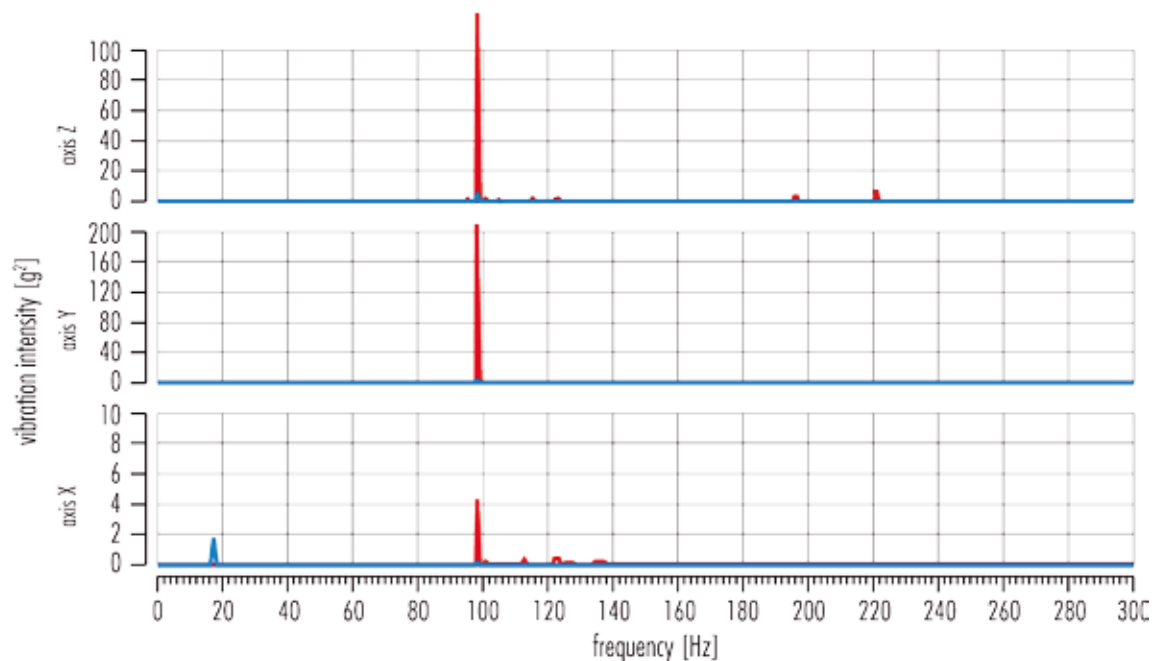


Comparison of the vibration intensity

speed of rope: 4 m/s, strand-induced excitation frequency: 94.1 Hz

conventional wire rope

PERFORMA wire rope

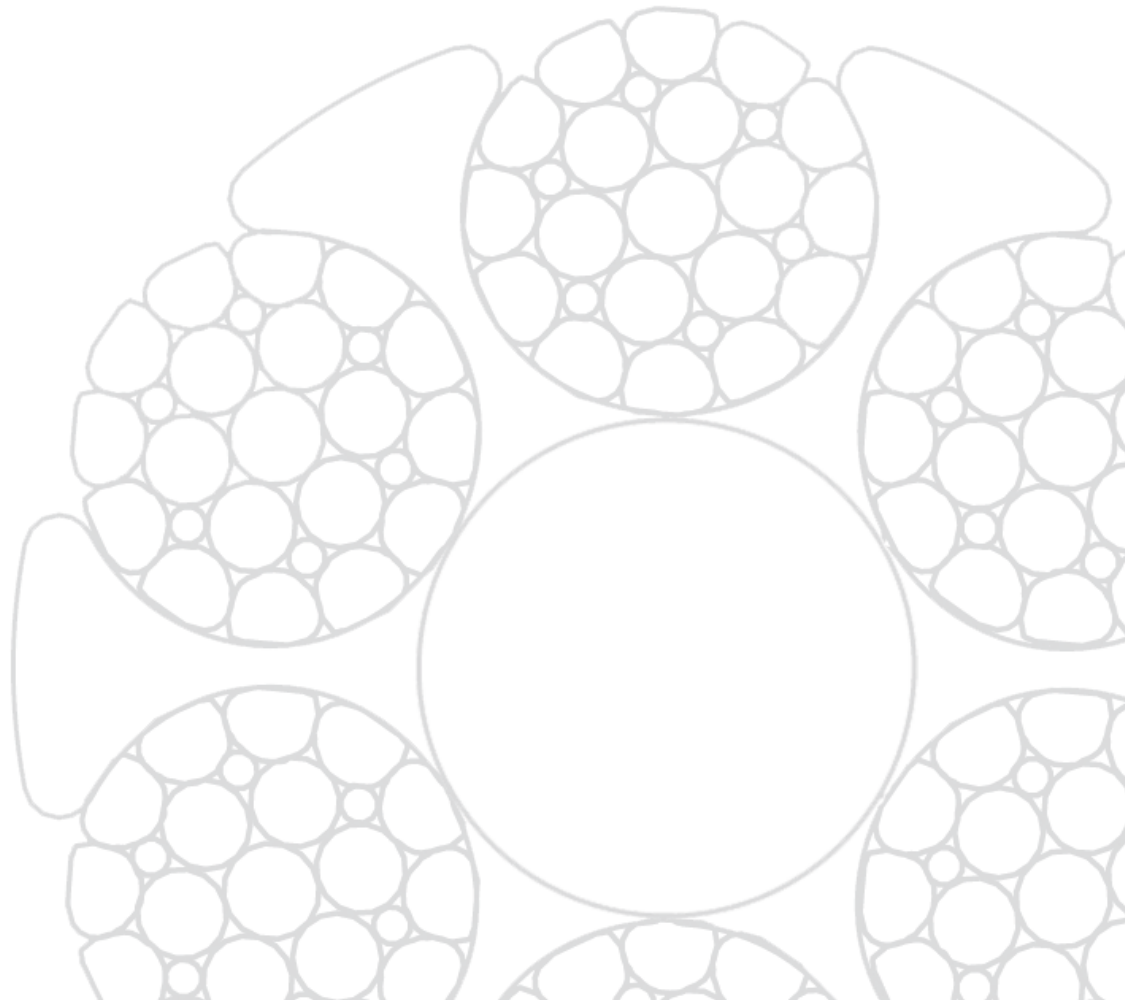


What makes PERFORMA wire ropes stand out:

- no strand-induced vibrations when running over line sheaves
- minimal wear of sheave and bullwheel liners
- unprecedented silent running
- maintenance-free
- high consistency in diameter and favorable elongation behavior
- no strand contact, and thereby a considerably longer service life by delayed fatigue

Where PERFORMA wire ropes are used to advantage:

Their use is particularly advantageous on installations with a high number of operating hours per day – and anywhere where vibrations and noise impair the travelling comfort and well-being of the passengers, local inhabitants and passers-by. With their outstanding characteristics, PERFORMA wire ropes are predestined for use in urban passenger transport systems or shuttle systems (Automated People Movers).



PERFORMA wire rope have proved their worth here...

Detroit, USA



Venice, Italy



Cincinnati, USA



Las Vegas, USA



Mexico City



Mont Juic, Spain



Satu Oeiras, Portugal