

SPECIFICATIONS

Thickness: 6.5mm (0.5mm wear layer + 1.5mm IXPE)
Dimension: 7.17" width x 72" length
Finish: Embossed in Register (EIR)
Bevelled: Micro-bevelled
Variation: 5
STC/IIC: 73/72
Warranty: 30 years residential/ 10 years commercial

Square ft./ Carton: 21.51 sq ft/box
Carton/ Pallet: 55 boxes
Square ft./ Pallet: 1183.05 sq ft/ pallet
Weight/ Carton: 44 lbs

FEATURES

Pet-friendly

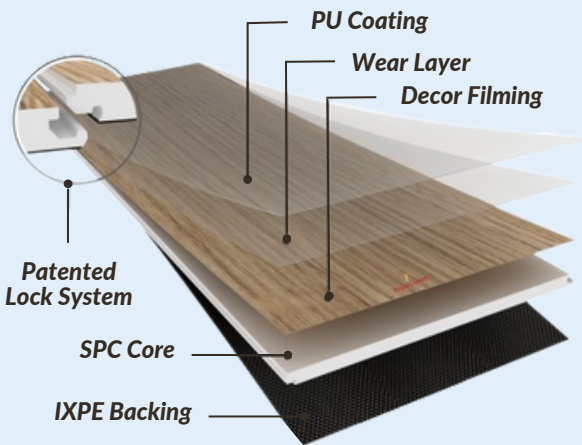
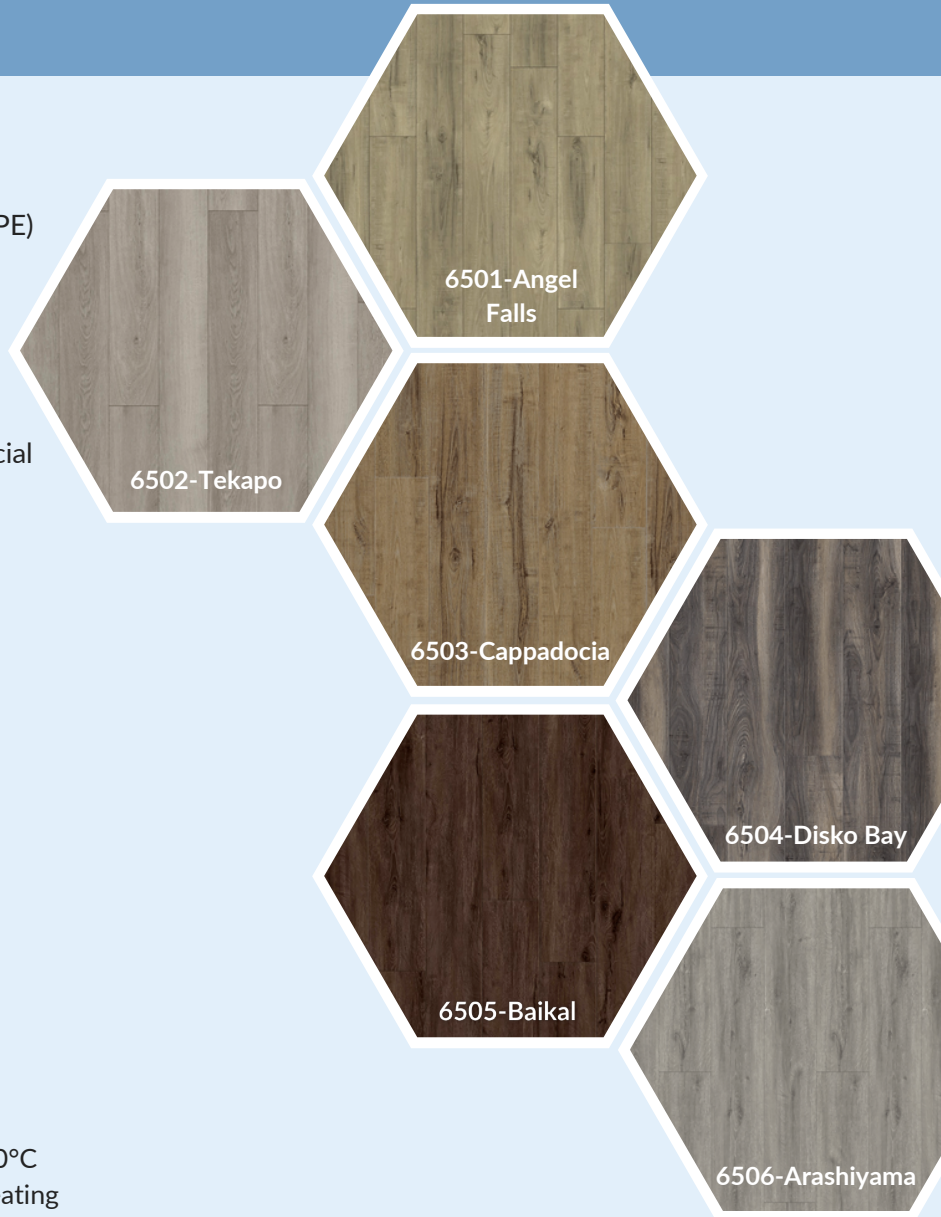
- 100% waterproof
- Advanced sound reduction
- Scratch-resistant & stain-free virgin materials

Family Safety & Health

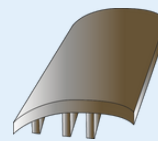
- Industry quality standards & strict quality control
- Anti-slipped finishing technology

Easy Installation

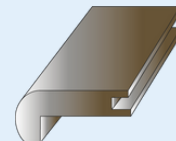
- Patented lock system - Välinge 5G drop lock
- High resistance in direct sunlight
- Able to withstand temperature from +60°C to -20°C
- Able to apply on water radiant or electric floor heating



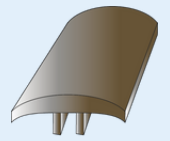
ACCESSORIES



Reducer



Stair Nose



T-Moulding



SPÉCIFICATIONS

Epaisseur: 6.5mm (0.5mm couche d'usure + 1.5mm IXPE)

Dimension: 7.17" largeur x 72" longueur

Finition: Embossé (EIR)

Biseauté: Micro-biseauté

Variation: 5

STC/IIC: 73/72

Garantie: 30 années résidentielle/ 10 années commerciale

Pieds carrés/ Carton: 21.51 pi2/boîte

Carton/ Palette: 55 boîte

Pieds carrés/ Palette: 1183.05 pi2/ palette

Poids/ Carton: 44 lbs

CARACTÉRISTIQUES

Accepte Les Animaux

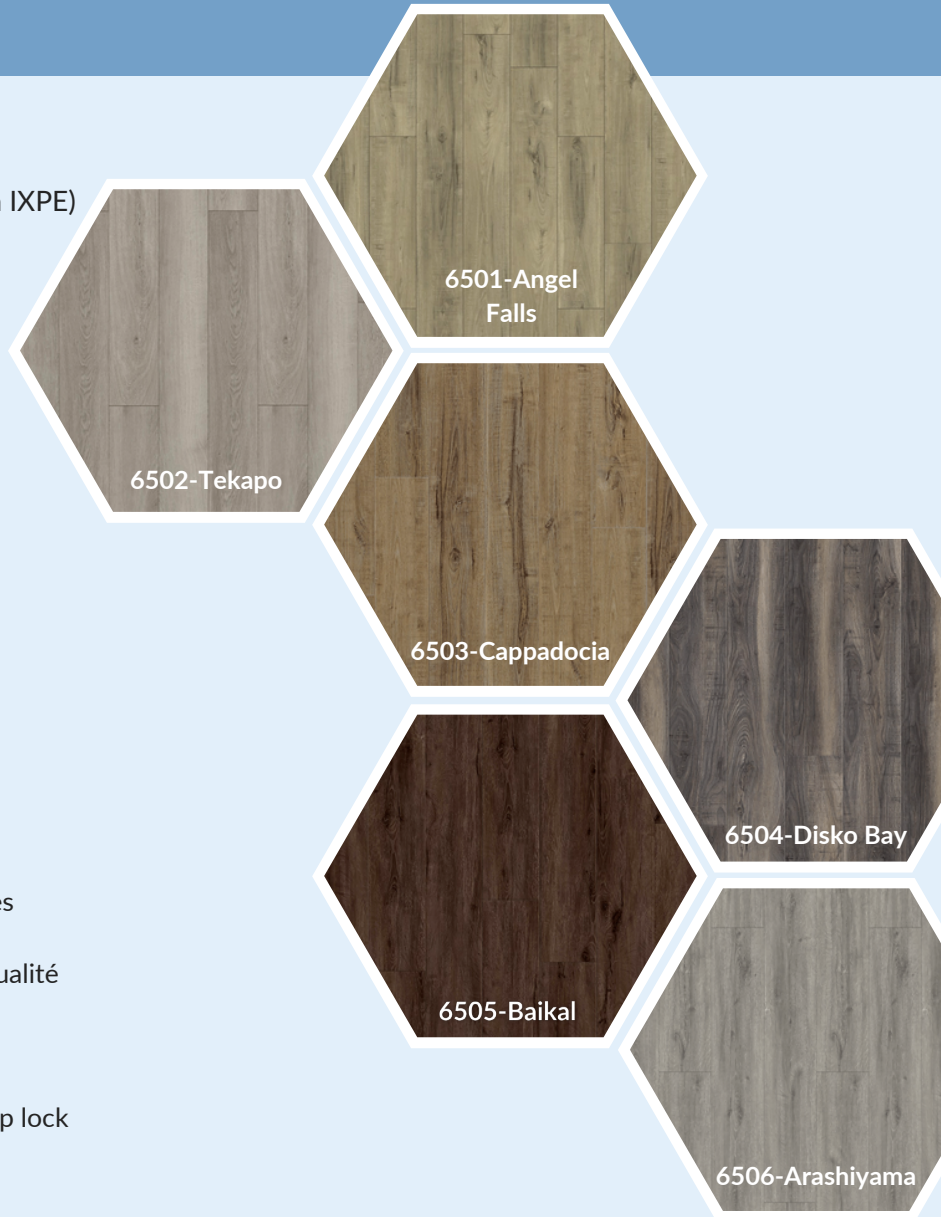
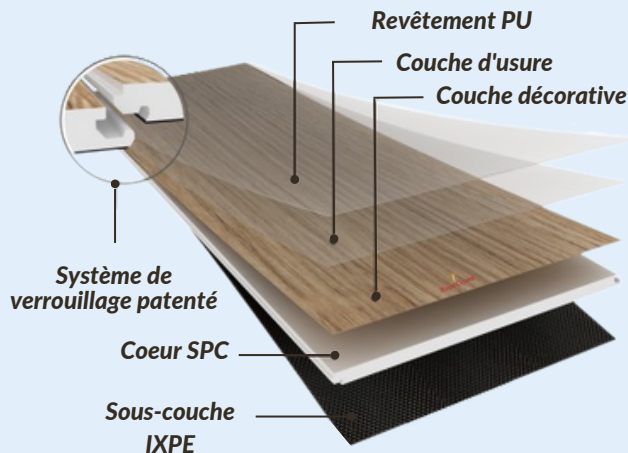
- 100% résistant à l'eau
- Réduction sonore avancée
- Matériaux vierges résistants aux rayures et taches

Sécurité Et Santé De La Famille

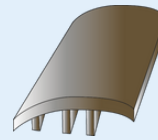
- Normes de qualité de l'industrie et contrôle de qualité rigoureux
- Technologie de finition antidérapante

Installation Facile

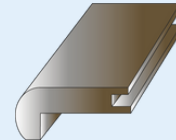
- Système de verrouillage patenté- Välinge 5G drop lock
- Haute résistance à la lumière directe du soleil
- Tolère des conditions de +60°C à -20°C
- Peut s'appliquer sur un plancher chauffant à eau ou électrique



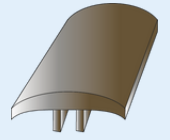
ACCESSOIRES



Réducteur



Nez de marches



Moulure en T

