

As a market leader and progressive company, we recognize it is our responsibility to create and live by sustainable business practices.

Performance Criteria	Test Method	Requirement	Harbinger Result
Classification	ASTM F1700-04	ASTM F1700 Standard Specification for Solid Vinyl Floor Tile	Class III Type B Embossed Surfaces
FloorScore	Scientific Certification Systems (SCS)	FloorScore Indoor Air Quality (IAQ)	Meets IAQ of LEED, CHPS and Green Guide for Health Care
FloorScore - Phenol	(SCS)	Allowable concentration 100 (µg/m <sup>3</sup> )	Phenol free wear layer
VOC	State of California DOHS R-174	Volatile Organic Compound and Aldehyde Emissions test. Allowable: 500 mg/m <sup>3</sup> .h	44 µg/m <sup>3</sup> .h Less than 10% of allowable level
Critical Radiant Flux	ASTM E648-10	Class 1, 0.45w/cm <sup>2</sup> or higher	Pass; Class 1
Smoke Density (flaming)	ASTM E662-09	Specific optical density max. 450	Pass; < 357
Smoke Density (non-flaming)	ASTM E662 -09	Specific optical density max. 450	Pass; < 339
Slip Resistance	ASTM D2047	Static coefficient of friction: OSHA min. 0.5; ADA (guideline) min. 0.6	Pass 0.90 (wet); compliance varies with surface texture
Heavy Metal Content	ASTM F963	Best = no detectable heavy metals	No detectable heavy metals <1.5mg/kg
Phthalate	CPSC-C1001-09.3	Meet CPSA Guideline	Exceeds CPSA guideline. Harbinger is phthalate free.
Static load limit	ASTM F970	Specified load 250lbs	Residual compression 0.004 inch
Flexibility	ASTM F137	No cracks/breaks	Pass; 6mm Mandrel
Color Fastness (heat)	ASTM F1514	Max. average delta E of 8	Pass
Color Fastness (light)	ASTM F1515	Max. average delta E of 8	Pass
Quality Control Management	ISO 9001 achieved	Environmental Management	ISO 14001 achieved
Heat Stability	ASTM F1514	Less than 8.0 Delta E	Pass
Residual Indentation	ASTM F1914-98	Specified load 140lbs	0.006 inch (3.5%)
Stain and Chemical Resistance	ASTM F925-2	Best = no change	No change
Dimensional Stability	ASTM F2199	< 0.10%	Pass, < 0.08%
IIC (Impact Insulation Class)	ASTM E492	Recommended IIC of 50 for commercial buildings	IIC 73* tested on 6" concrete (Varies by product)
STC (Sound Transmission Coefficient)	ASTM E90-09 ASTM E413-10	Recommended STC of 50 for commercial buildings	STC 68* tested on 6" concrete (Varies by product)
Radiant Heat Suitability	-	Suitable for under floor heating	Up to 28°C (82°F)

**LEADERSHIP IN ENERGY AND ENVIRONMENTAL DESIGN LEED v4**

Building Design and Construction: New Construction LEED v4	Building product disclosure and optimization – Environmental Product Declarations (EPD) (up to 2 points)	Harbinger Environmental Product Declaration (EPD) accredited by SCS Global Services
Building Design and Construction: New Construction LEED v4	Building product disclosure and optimization – material ingredients (up to 2 points)	Harbinger Health Product Declaration (HPD) accredited by SCS Global Services
Building Design and Construction: New Construction LEED v4	Certified Multi-Attribute Products and Material (possible 1 point)	Harbinger NSF/ANSI 332 Platinum Certification The highest level of performance recognized.
Building Design and Construction: New Construction LEED v4	Low emitting materials (up to 3 points)	Harbinger Flooring is FloorScore certified Uzin KE2000S and KE 66 adhesive are VOC compliant.
Building Design and Construction: New Construction LEED v4	Verified Construction and Demolition Recycling Rates (possible 1 point)	Harbinger is fully recyclable

www.HarbingerFloors.com

HARBINGER NORTH AMERICA TOLL FREE TELEPHONE 1-866-646-6519



Harbinger is committed to an environmentally and socially responsible business practice. To ensure highest quality product, Harbinger is made with bio-based plasticizer and virgin PVC. This guarantees a product free of heavy metals, phthalates and phenols.

Publication Date: January 2023

*The beauty of wood and natural stone meets the ease and durability of Harbinger<sup>TM</sup>*



# Acoustic Click Engineered Rigid Vinyl Plank

A rock solid waterproof product, with added stability and structure.



SPC 11099R Ohio Buckeye 7" x 48" x 5.5mm, 0.55mm WL



SPC 11101R Maduro 7" x 48" x 5.5mm, 0.55mm WL



SPC 11114R Pebble Beach Grey 7" x 48" x 5.5mm, 0.55mm WL



SPC 11115L Galloway 7" x 48" x 5.5mm, 0.55mm WL



SPC 77101R Dublin 9" x 9" x 59.5" x 5.5mm, 0.55mm WL



SPC 77102R Churchill 9" x 9" x 59.5" x 5.5mm, 0.55mm WL



SPC 77103R Aberdeen 9" x 9" x 59.5" x 5.5mm, 0.55mm WL



SPC 77104R Alexandria 9" x 9" x 59.5" x 5.5mm, 0.55mm WL



SPC 11099R Ohio Buckeye



SPC 11011T Cashmere 12" x 24" x 5.5mm, 0.55mm WL



SPC 11022T Winter Solstice 12" x 24" x 5.5mm, 0.55mm WL



SPC 11033T Stormy Grey 12" x 24" x 5.5mm, 0.55mm WL

**IIC 70 STC 67**

Meets and exceeds 2015 National Building Code Sound Transmission Class STC 50. Harbinger Engineered Rigid Vinyl Plank with attached cork underlay achieved IIC 70 and STC 67.



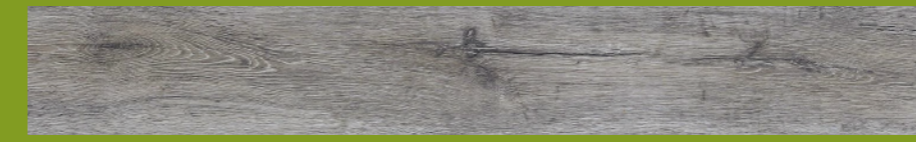
Innovations 4 Flooring (i4F) technology provides a one piece drop-lock system for **fast and easy** flooring installation.

**HARBINGER ROOM VISUALIZER**  
[www.harbingerfloors.com/visualizer](http://www.harbingerfloors.com/visualizer)  
 Upload an image or use a preloaded room to see the space installed with Harbinger.

[www.harbingerfloors.com](http://www.harbingerfloors.com)

# Acoustic Click Waterproof CompositeCore

A premium waterproof product, built to withstand the rigors of daily life.



WPC 330044R Edinburgh 9" x 59.5" x 7.5mm, 0.55mm WL



WPC 33077R St. Andrews 9"x59.5" / 7"x59.5" / 5"x29.75" x 7.5mm, 0.55 WL  
 WPC 77077R St. Andrews 9" x 59.5" x 7.5mm, 0.55 WL



WPC 33088R Sussex 9" x 59.5" x 7.5mm, 0.55mm WL



WPC 33099R Nottingham 9"x59.5" / 7"x59.5" / 5"x29.75" x 7.5mm, 0.55 WL  
 WPC 77099R Nottingham 9" x 59.5" x 7.5mm, 0.55 WL



WPC 33103R Cornwall 9"x72" / 7"x72" / 5"x36" x 7.5mm, 0.55 WL  
 WPC 77033R Cornwall 9" x 72" x 7.5mm, 0.55 WL



WPC 33104R Knoxville 9"x72" / 7"x72" / 5"x36" x 7.5mm, 0.55 WL  
 WPC 77044R Knoxville 9" x 72" x 7.5mm, 0.55 WL



WPC 33105R San Antonio 9"x72" / 7"x72" / 5"x36" x 7.5mm, 0.55 WL  
 WPC 77055R San Antonio 9" x 72" x 7.5mm, 0.55 WL



WPC 33106R Cambridge 9"x59.5" / 7"x59.5" / 5"x29.75" x 7.5mm, 0.55 WL  
 WPC 77066R Cambridge 9" x 59.5" x 7.5mm, 0.55 WL



WPC 77099R Nottingham 9"



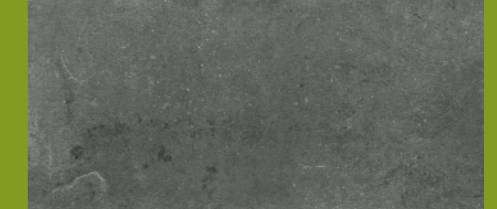
WPC 33011S Dali 18" x 36" x 7.5mm, 0.55mm WL



WPC 33022S Gaudi 18" x 36" x 7.5mm, 0.55mm WL

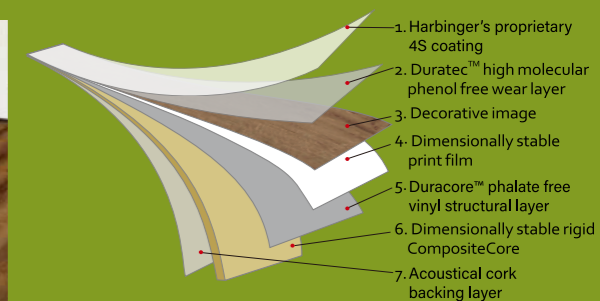


WPC 33107L Calacatta 18" x 36" x 7.5mm, 0.55mm WL



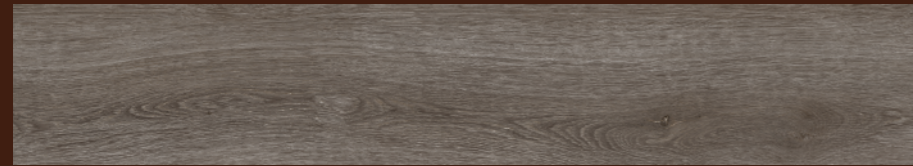
WPC 33108T St. Tropez Limestone 18" x 36" x 7.5mm, 0.55mm WL

**IIC 73 STC 68**



[www.harbingerfloors.com](http://www.harbingerfloors.com)

# ESSENTIALS Like a well selected wardrobe, Essentials' neutral palette is always in style.



HES 23055R Gibraltar Grey 6" x 48" x 3.0mm, 0.55mm WL



HES 23066R Hampton Greige 6" x 48" x 3.0mm, 0.55mm WL



HES 23077R Beach House 6" x 48" x 3.0mm, 0.55mm WL



HES 23088T Laurel Oak 6" x 48" x 3.0mm, 0.55mm WL



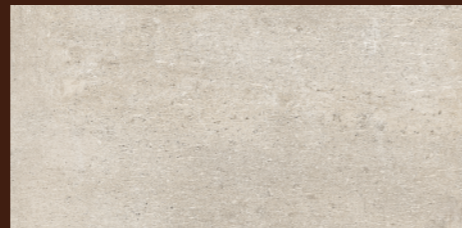
HES 88088T Carolina Spalted Cherry 6" x 48" x 3.0mm, 0.55mm WL



HES 88102T Tennessee Hickory 6" x 48" x 3.0mm, 0.55mm WL



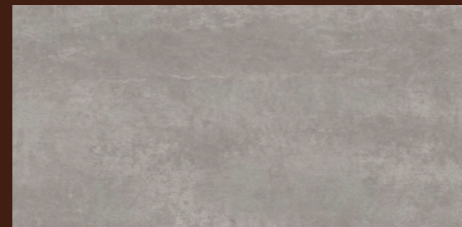
HES 24011T Dune  
12" x 24" x 3.0mm, 0.55mm WL



HES 24022T Sahara  
12" x 24" x 3.0mm, 0.55mm WL



HES 24044L Carrera  
12" x 24" x 3.0mm, 0.55mm WL



HES 24066T Perissa  
12" x 24" x 3.0mm, 0.55mm WL



HES 24044L Carrera

[www.harbingerfloors.com](http://www.harbingerfloors.com)

# THE QUIET ZONE Your all in one acoustical flooring solution.



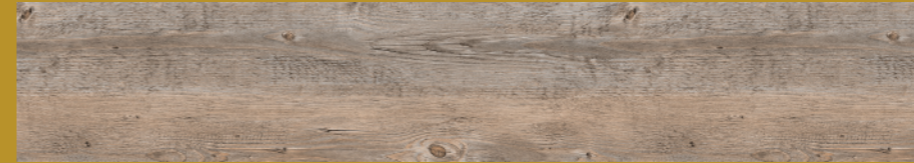
TQZ 1508R Nuance 7.36" x 48.3" x 4.5mm, 0.55mm WL



TQZ 1510R Nimbus 7.36" x 48.3" x 4.5mm, 0.55mm WL



TQZ 1511H Serene 7.36" x 48.3" x 4.5mm, 0.55mm WL



TQZ 1517H Tavern Tobacco 7.36" x 48.3" x 4.5mm, 0.55mm WL



TQZ 3309R Cumulus 7.36" x 48.3" x 4.5mm, 0.55mm WL



TQZ 4401R Tranquil 7.36" x 48.3" x 4.5mm, 0.55mm WL



TQZ 4404R Cirrus 7.36" x 48.3" x 4.5mm, 0.55mm WL

**IIC 72 STC 70**



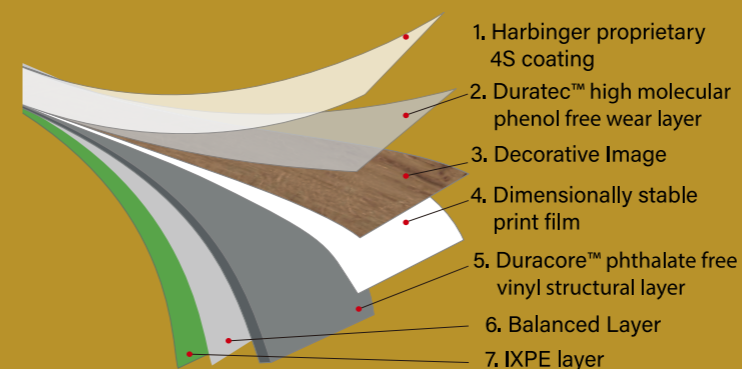
TQZ 1503T Amuse  
12" x 24" x 4.5mm, 0.55mm WL



TQZ 2401T Alto  
12" x 24" x 4.5mm, 0.55mm WL



CERTIFIED BY  
SCS Global Services



[www.harbingerfloors.com](http://www.harbingerfloors.com)

## Craftsman Series

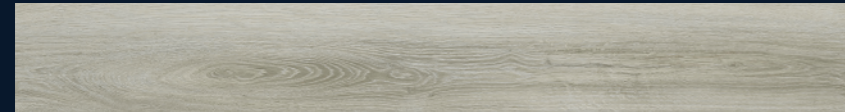
Where style, design, performance and price come together in harmony.



HCP 44011R Beachcomber 7.36" x 48.3" x 3.0mm, 0.55mm WL



HCP 44022C Topeka 7.36" x 48.3" x 3.0mm, 0.55mm WL



HCP 44033R Horizon 7.36" x 48.3" x 3.0mm, 0.55mm WL



HCP 44044R Gobi 7.36" x 48.3" x 3.0mm, 0.55mm WL



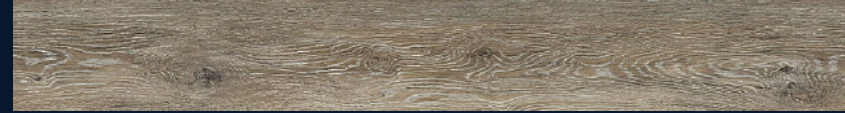
HCP 44066R Herringbone Monterey 4.69" x 23.43" x 3.0mm, 0.55mm WL



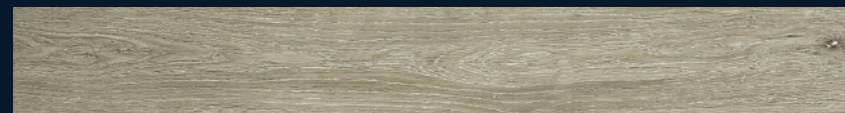
HCP 44077R Herringbone Silver Leaf 4.69" x 23.43" x 3.0mm, 0.55mm WL



HCP 44100R Macanudo 7.36" x 48.3" x 3.0mm, 0.55mm WL



HCP 55033R Oak Driftwood 7.36" x 48.3" x 3.0mm, 0.55mm WL



HCP 99022R Silver Oak 7.36" x 48.3" x 3.0mm, 0.55mm WL



HCP 99033R Farmhouse Umber 9" x 48" x 3.0mm, 0.55mm WL



HCP 99044R Farmhouse Nordic 9" x 48" x 3.0mm, 0.55mm WL



HCP 99066T Burmese Teak 9" x 48" x 3.0mm, 0.55mm WL

# Why Choose Harbinger?

Harbinger vinyl flooring is virtually indistinguishable from the natural beauty of the materials which inspire its designs – yet it minimizes the practical drawbacks of natural flooring by providing increased performance with lower maintenance.

Harbinger flooring is made from extremely durable pure vinyl with 4S technology.

**4S**  
TECHNOLOGY  
SUPERIOR DURABILITY  
SCUFF RESISTANCE  
STAIN RESISTANCE  
SCRATCH PROTECTION



Benefits:

Heavy commercial wear layer (22mil/0.55mm) ensures superior durability, wear resistance and lower maintenance vital to commercial applications.

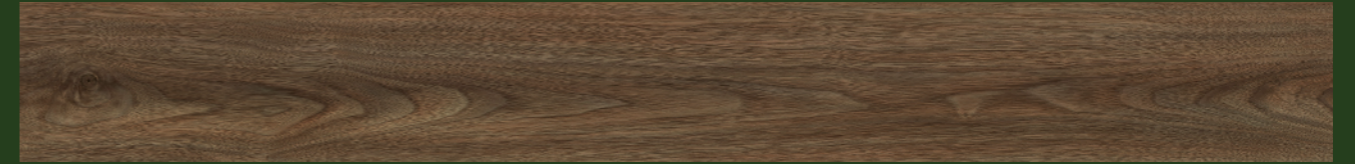
Provides lower lifecycle costs than most flooring products – outperforming laminates and hardwoods.

Manufactured under ISO 9001:2008 quality control and ISO 14001:2004 environmental management standards.

[www.harbingerfloors.com](http://www.harbingerfloors.com)

## CONTRACT SERIES

Durability, style and low maintenance at contractor pricing.



HVP 11066H American Walnut 6" x 48" x 2.0mm, 0.3mm WL



HVP 22044T Coventry Spice 6" x 48" x 2.0mm, 0.3mm WL



HVP 22055T Savannah Oak 6" x 48" x 2.0mm, 0.3mm WL



HVP 22077T Bonsai Maple 6" x 48" x 2.0mm, 0.3mm WL



HVP 22088T Tumbleweed 6" x 48" x 2.0mm, 0.3mm WL



HVP 22099T Sienna 6" x 48" x 2.0mm, 0.3mm WL



HVP 99055H Tavern Whiskey 6" x 48" x 2.0mm, 0.3mm WL

[www.harbingerfloors.com](http://www.harbingerfloors.com)