



As a market leader and progressive company, we recognize it is our responsibility to create and live by sustainable business practices.

Performance Criteria	Test Method	Requirement	Harbinger Result
Classification	ASTM F1700-04	ASTM F1700 Standard Specification for Solid Vinyl Floor Tile	Class III Type B Embossed Surfaces
FloorScore	Scientific Certification Systems (SCS)	FloorScore Indoor Air Quality (IAQ)	Meets IAQ of LEED, CHPS and Green Guide for Health Care
FloorScore - Phenol	(SCS)	Allowable concentration 100 (µg/m ³)	Phenol free wear layer
VOC	State of California DOHS R-174	Volatile Organic Compound and Aldehyde Emissions test. Allowable: 500 mg/m ³ .h	44 µg/m ³ .h Less than 10% of allowable level
Critical Radiant Flux	ASTM E648-10	Class 1, 0.45w/cm ² or higher	Pass; Class 1
Smoke Density (flaming)	ASTM E662-09	Specific optical density max. 450	Pass; < 357
Smoke Density (non-flaming)	ASTM E662 -09	Specific optical density max. 450	Pass; < 339
Slip Resistance	ASTM D2047	Static coefficient of friction: OSHA min. 0.5; ADA (guideline) min. 0.6	Pass 0.90 (wet); compliance varies with surface texture
Heavy Metal Content	ASTM F963	Best = no detectable heavy metals	No detectable heavy metals <1.5mg/kg
Phthalate	CPSC-C1001-09.3	Meet CPSA Guideline	Exceeds CPSA guideline. Harbinger is phthalate free.
Static load limit	ASTM F970	Specified load 250lbs	Residual compression 0.004 inch
Flexibility	ASTM F137	No cracks/breaks	Pass; 6mm Mandrel
Color Fastness (heat)	ASTM F1514	Max. average delta E of 8	Pass
Color Fastness (light)	ASTM F1515	Max. average delta E of 8	Pass
Quality Control Management	ISO 9001 achieved	Environmental Management	ISO 14001 achieved
Heat Stability	ASTM F1514	Less than 8.0 Delta E	Pass
Residual Indentation	ASTM F1914-98	Specified load 140lbs	0.006 inch (3.5%)
Stain and Chemical Resistance	ASTM F925-2	Best = no change	No change
Dimensional Stability	ASTM F3261	< 0.20%	Pass
IIC (Impact Insulation Class)	ASTM E492	Recommended IIC of 50 for commercial buildings	IIC 70* tested on 6" concrete (Varies by product)
STC (Sound Transmission Coefficient)	ASTM E90-09 ASTM E413-10	Recommended STC of 50 for commercial buildings	STC 67* tested on 6" concrete (Varies by product)
Radiant Heat Suitability	-	Suitable for under floor heating	Up to 28°C (82°F)

LEADERSHIP IN ENERGY AND ENVIRONMENTAL DESIGN LEED v4		
Building Design and Construction: New Construction LEED v4	Building product disclosure and optimization – Environmental Product Declarations (EPD) (up to 2 points)	Harbinger Environmental Product Declaration (EPD) accredited by SCS Global Services
Building Design and Construction: New Construction LEED v4	Building product disclosure and optimization – material ingredients (up to 2 points)	Harbinger Health Product Declaration (HPD) accredited by SCS Global Services
Building Design and Construction: New Construction LEED v4	Certified Multi-Attribute Products and Material (possible 1 point)	Harbinger NSF/ANSI 332 Platinum Certification The highest level of performance recognized.
Building Design and Construction: New Construction LEED v4	Low emitting materials (up to 3 points)	Harbinger Flooring is FloorScore certified Uzin KE2000S and KE 66 adhesive are VOC compliant.
Building Design and Construction: New Construction LEED v4	Verified Construction and Demolition Recycling Rates (possible 1 point)	Harbinger is fully recyclable

www.HarbingerFloors.com
HARBINGER NORTH AMERICA TOLL FREE TELEPHONE 1-866-646-6519

Harbinger is committed to an environmentally and socially responsible business practice. To ensure highest quality product, Harbinger is made with bio-based plasticizer and virgin PVC. This guarantees a product free of heavy metals, phthalates and phenols.



Publication Date: January 2022



ARTISAN SERIES

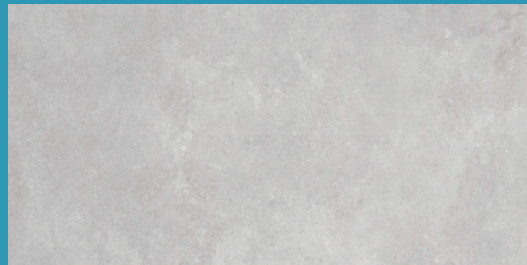


COMMITTED TO PRODUCT TRANSPARENCY



Artisan Series Engineered Rigid Vinyl Tiles

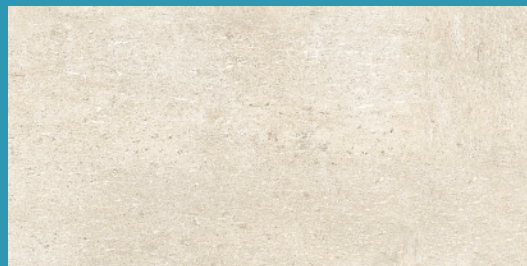
IIC 70 STC 67



Artisan 11011T Veneto
12" x 24" x 5.0mm 0.3mm WL



Artisan 11022T Firenze
12" x 24" x 5.0mm 0.3mm WL



Artisan 11101T Concord
12" x 24" x 5.0mm 0.3mm WL



Artisan 11102T Grasscloth Tweed
12" x 24" x 5.0mm 0.3mm WL

FEATURES & BENEFITS

Dimensions	7"x48" planks and 12"x24" tiles
Thickness	5.0mm (4.0mm SPC + 1.0mm IXPE underlay)
Wear Layer	0.3 mm
Edge	Bevel
Construction	High pressure heat laminated
Application	Heavy commercial floating floor
Coating	4s Technology - Superior durability, scuff resistance, stain resistance, scratch protection
Textures	Realistic embossing textures allow you to see the grain & knots as evident in real wood
Grade Level	Suitable for all interior floor surfaces, above or below grade
Acoustic Properties	Barefoot friendly with attached cross-linked IXPE underlay. Provides warmth and sound reduction within the room and on the floors below

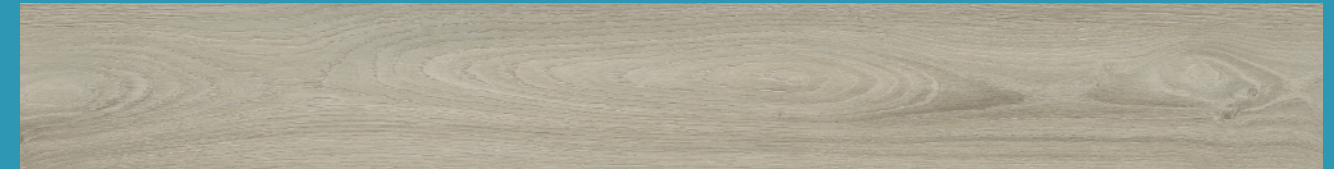


Artisan Series Engineered Rigid Vinyl Planks

IIC 70 STC 67



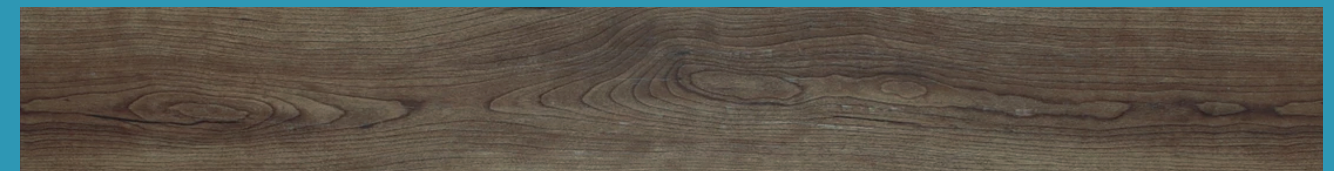
Artisan 11033N Paloma 7" x 48" x 5.0mm 0.3mm WL



Artisan 11044N Chateau Oak 7" x 48" x 5.0mm 0.3mm WL



Artisan 11055N Oak Butternut 7" x 48" x 5.0mm 0.3mm WL



Artisan 11066N Hand Hewn Walnut 7" x 48" x 5.0mm 0.3mm WL



Artisan 11077N Tavern Barnboard 7" x 48" x 5.0mm 0.3mm WL



Artisan 11088N Prarie Barnboard 7" x 48" x 5.0mm 0.3mm WL



Artisan 11099N Serenity 7" x 48" x 5.0mm 0.3mm WL



Artisan 11100N Oxford Grey 7" x 48" x 5.0mm 0.3mm WL