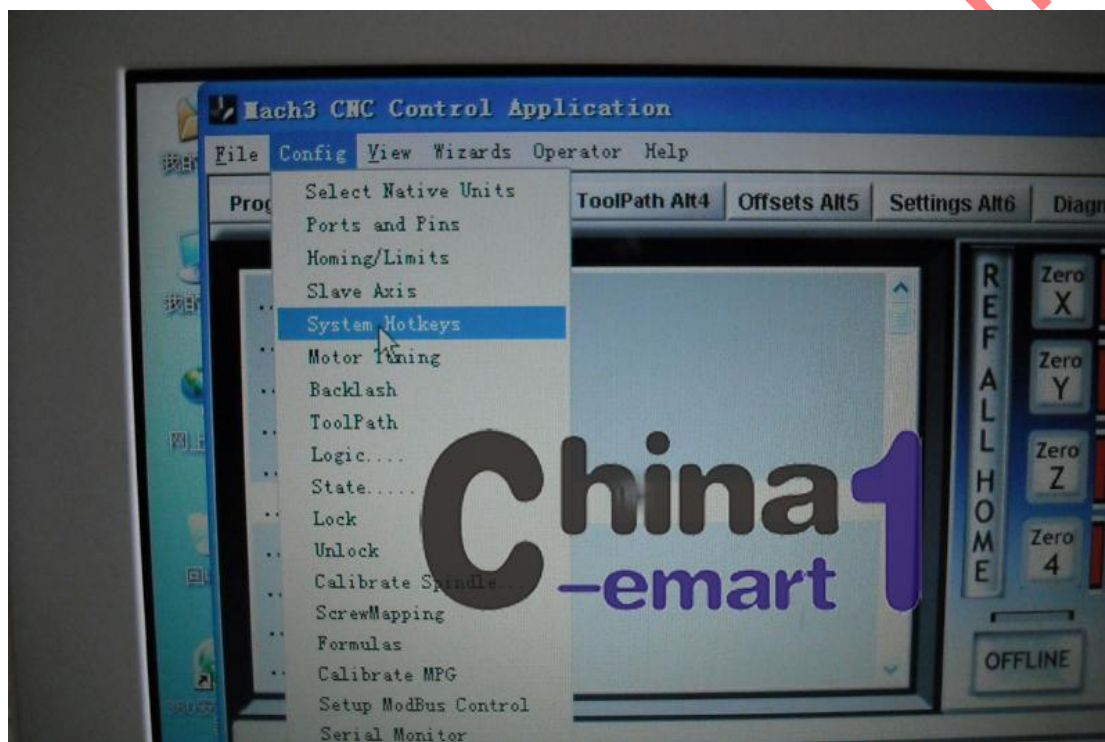


Email:tiamofay@gmail.com EBAY ID: tiamofaye Ebay shop:
<http://stores.ebay.com/chinaemart1>

3 AXIS CNC USB Pendant Manual remote Control JOG
encoder Mach3 Only config manual

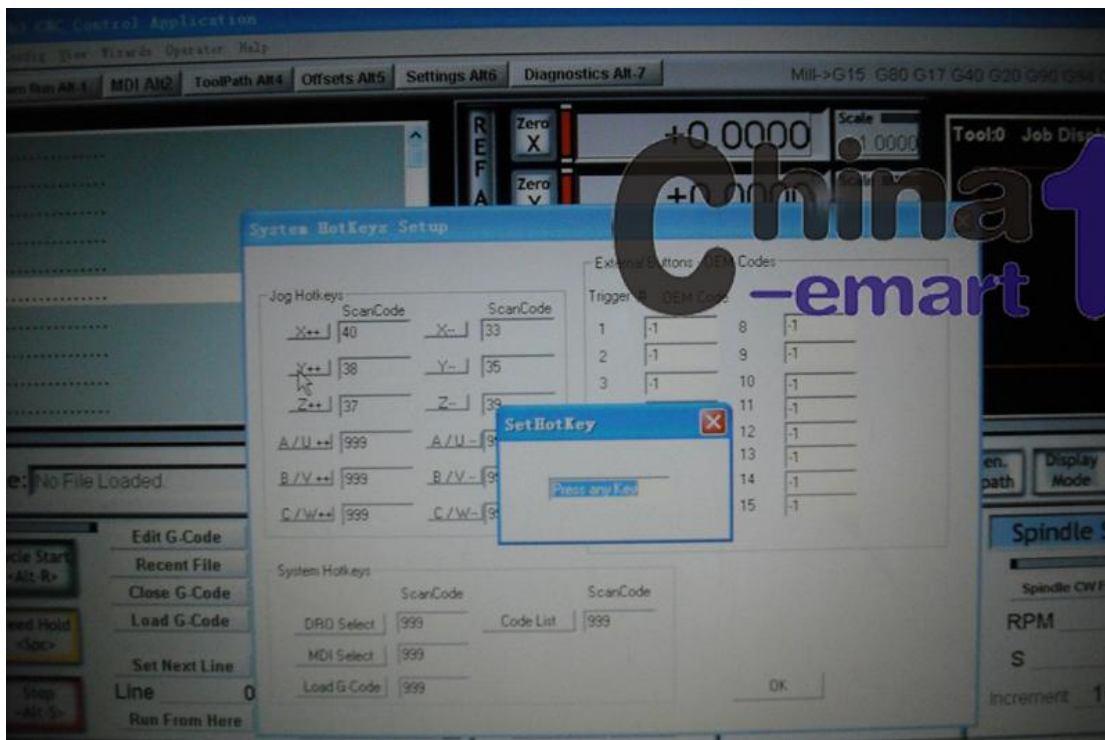
Step 1 ---HOTKEYS

Open the Mach 3, you can email me for the Mach 3 that I use, I
will send it to you by email.



Config --- System Hotkeys to setup the X,Y,Z axis hotkeys

Email: tiamofay@gmail.com EBAY ID: tiamofaye Ebay shop: <http://stores.ebay.com/chinaemart1>



Eg. : Press Y++ by using the mouse, and then the "SetHotKey" Dialog Box appears , at this time you can press the button Y+ on the USB Pendant





Setup the X+,X-,Y+,Y-,Z+,Z- like this.

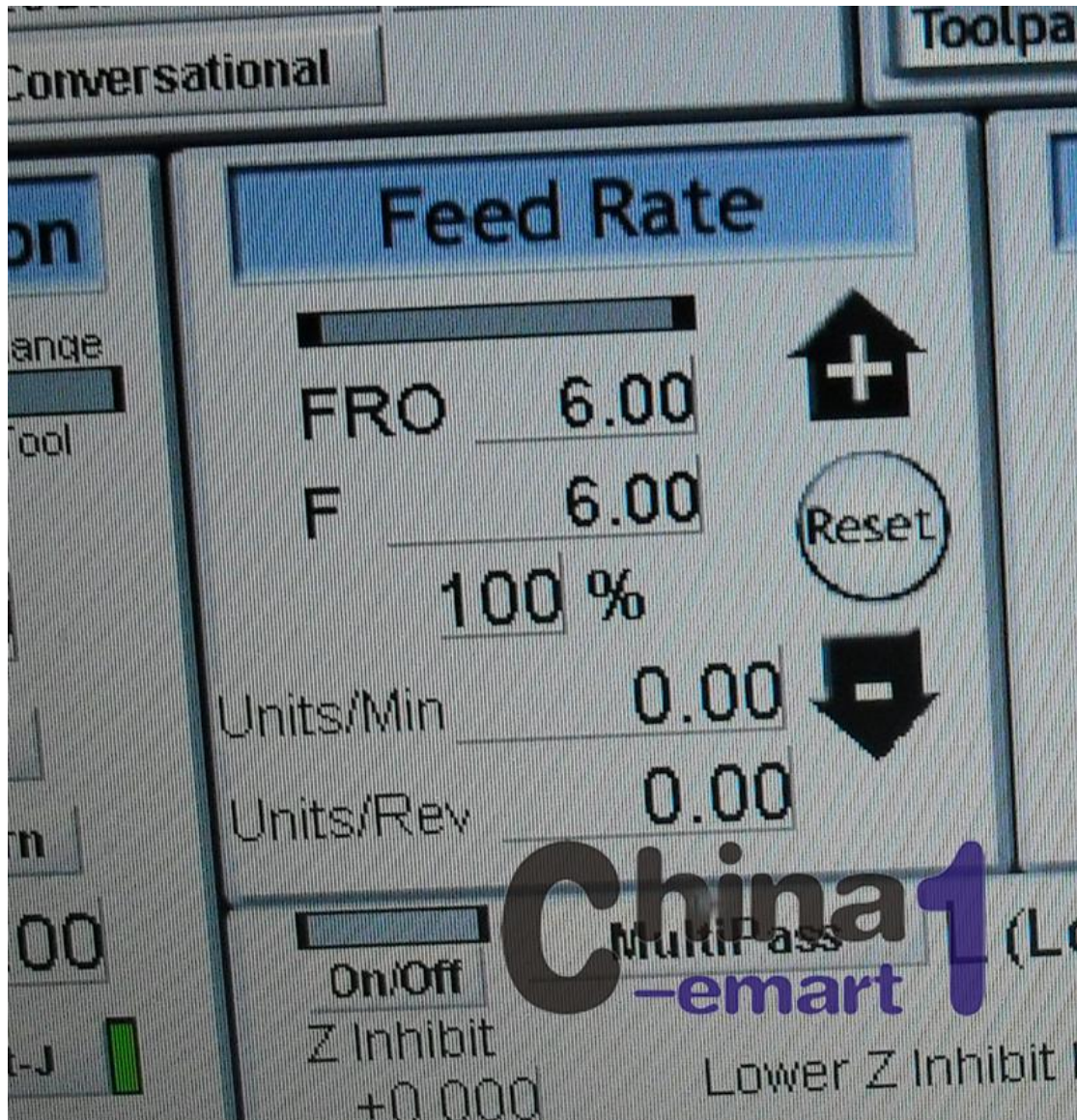
Step 2--- Single Step



This one does not need to setup, you can see the yellow mark, when you press the single step, you will find the yellow mark appears or disappears.

Step 3--- Feed Rate

This key does not need to setup, when you press F+ or F-, you will see the " Feed Rate" in Mach 3 changes.

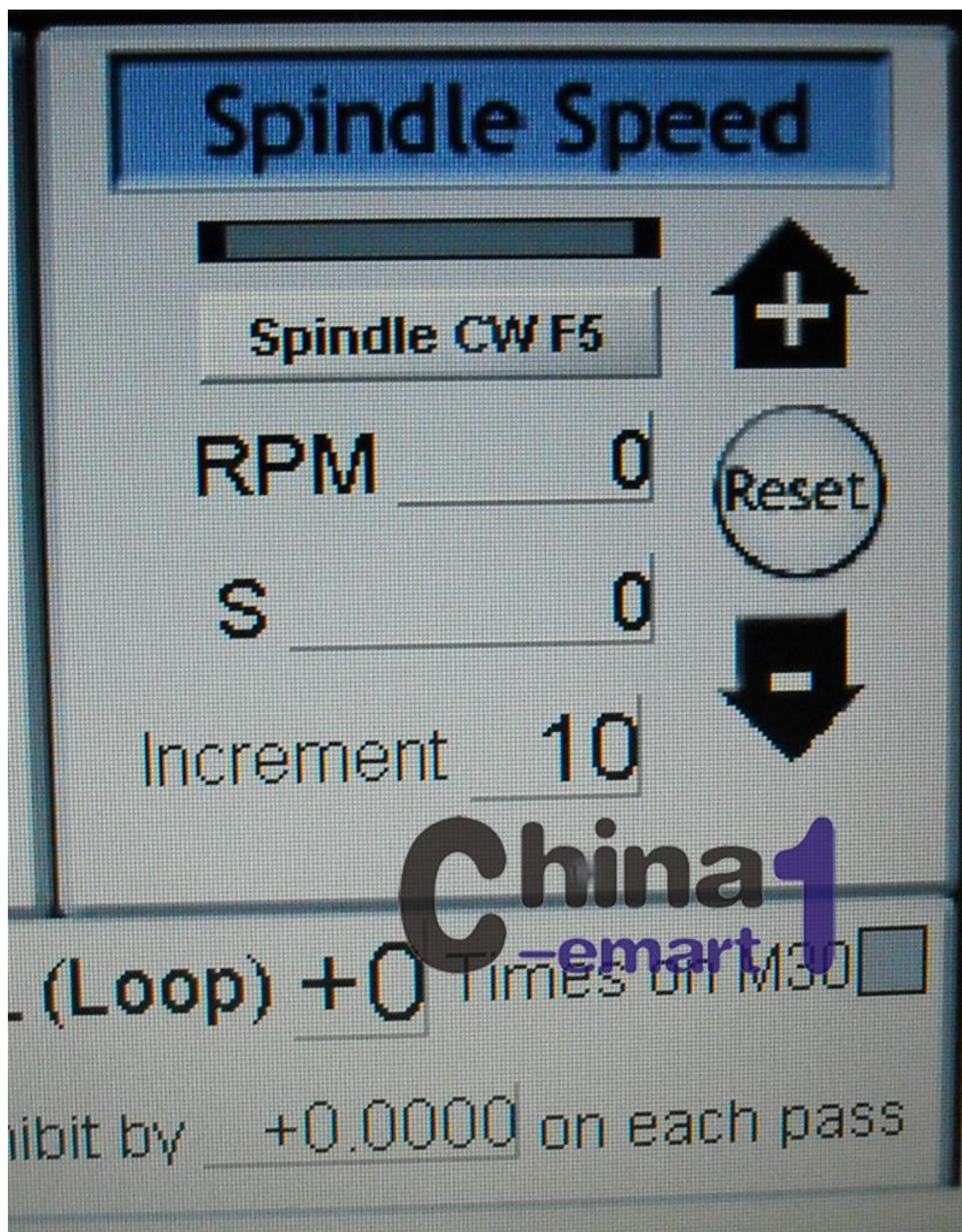


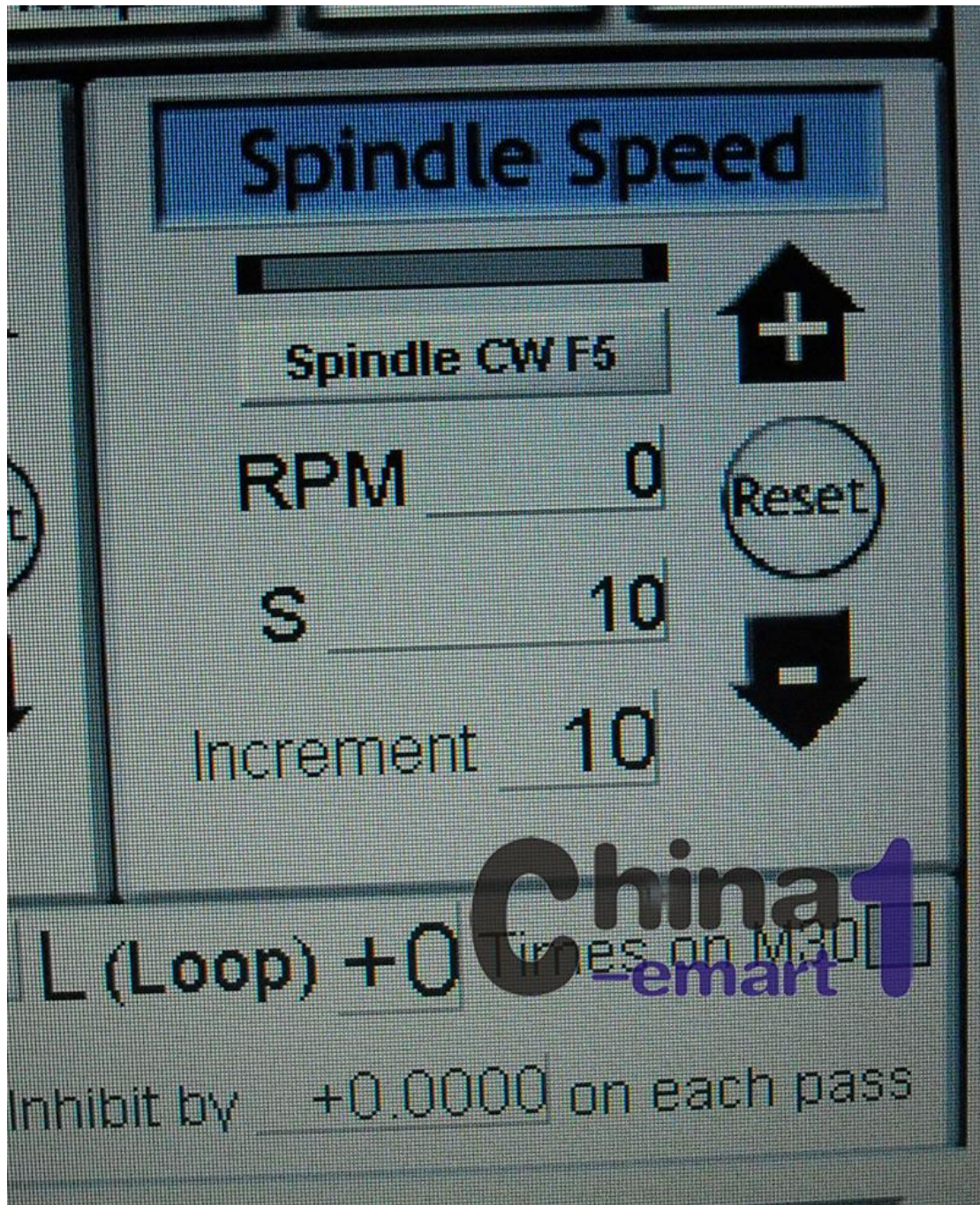


tiamofay

Step 4---Spindle Speed

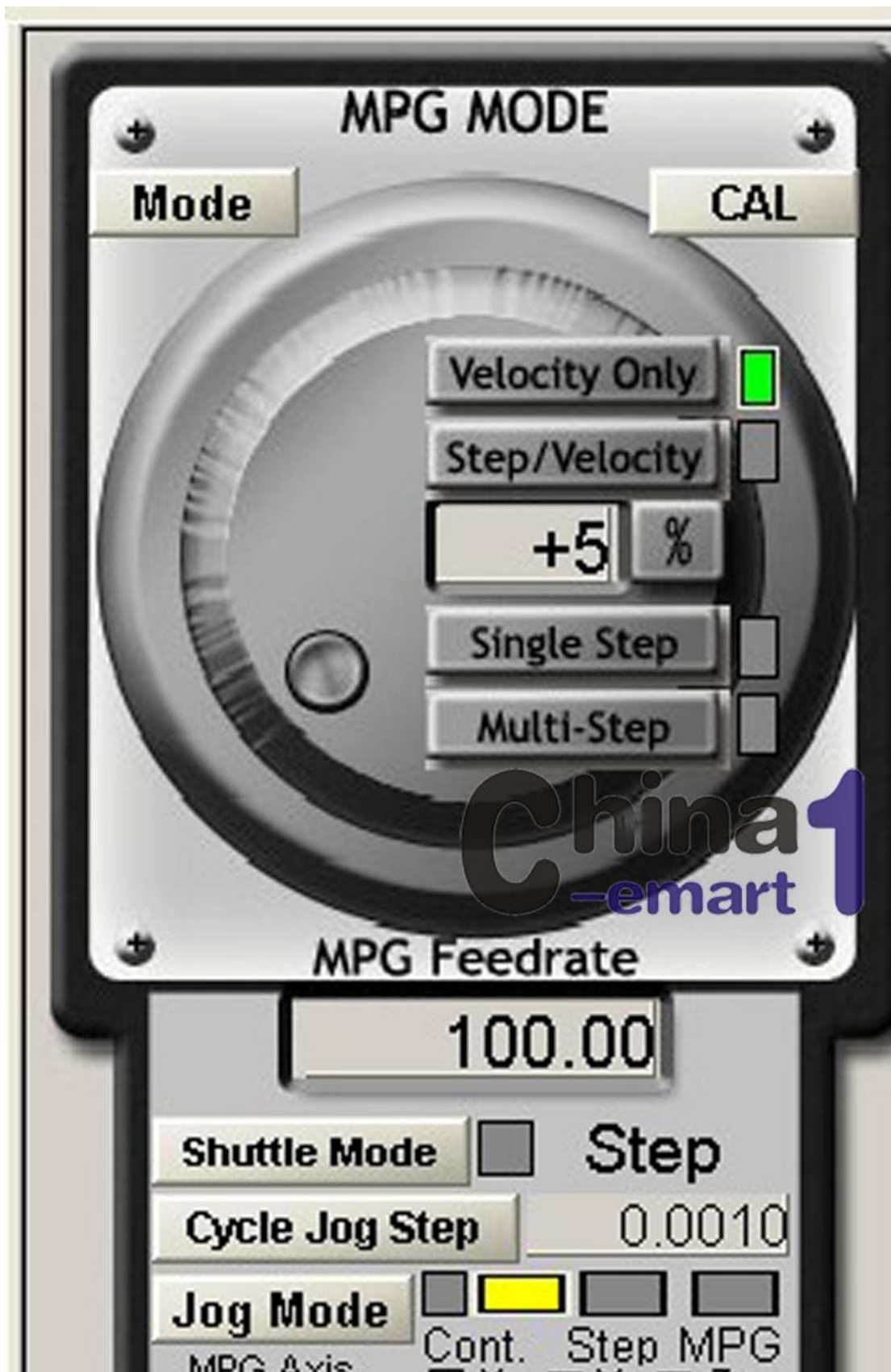
This key does not need to setup, when you press Speed up or Slow down, you will see the " Spindle Speed " in Mach 3 changes.





Step 5--- Jog

Press the " TAB" key on the keyboard of your PC , the " MPG Mode " of the Mach 3 will pop-up.



Email:tiamofay@gmail.com EBAY ID: tiamofaye Ebay shop:
<http://stores.ebay.com/chinaemart1>

At this moment, you press the J+ or J- on the pendant , it does not work,notice the mouse placed Key “ JOG mode “ and the yellow Mark, you change it and then the J+ and J- will work.

tiamofay@gmail.com

