



# **ANIX modular house**

# Introduction

While developing this modular house, the main task was to combine natural vibes with elegance and comfort in every detail, to create a unique and alluring design.





The house is thoughtfully designed,  
equipped with everything you need for  
a comfortable stay.

The house features many elements made of natural wood and polished stone. These two materials complement each other.



The ANIX modular home model captivates those around it with its sophistication, blending perfectly into any natural landscape.





Quality architecture and design contributes to a conducive living environment, comfortable recreation, and also affects psychological aspects such as self-affirmation, a sense of stability, confidence and satisfaction.

# **Advantages of modular houses**

A white curved line starts from the bottom right corner and curves upwards and to the left, ending near the center of the page.

Energy efficiency of construction - energy-saving materials and technologies are used for production.

High speed of construction. You don't waste time on building it. Modular house is assembled on a plot of land in a few days.






Mobility - if necessary modular building can be easily disassembled and quickly assembled at the new location.

Guaranteed high quality - every stage of the production process in the factory is strictly controlled.

Know the cost of the house in advance. You buy a ready-made house for a specific amount without surcharges and unforeseen costs.





**The cost of a modular house with  
full finishes – 60.000 EUR**

Price includes:



Heat pump  
in each room



Sanitary  
equipment



Under floor  
heating



Boiler



Towel rail



The doors

of the hidden installation  
for the painting with  
a magnetic lock



Baseboard  
flush mount



Natural Floor  
Covering



Stretch  
Ceilings



Electrical  
installations



Security and fire  
alarm system



Painting  
the walls



Sliding five-chamber plastic  
doors with triple glazing

## Price does not include:

cabinet furniture

upholstered furniture

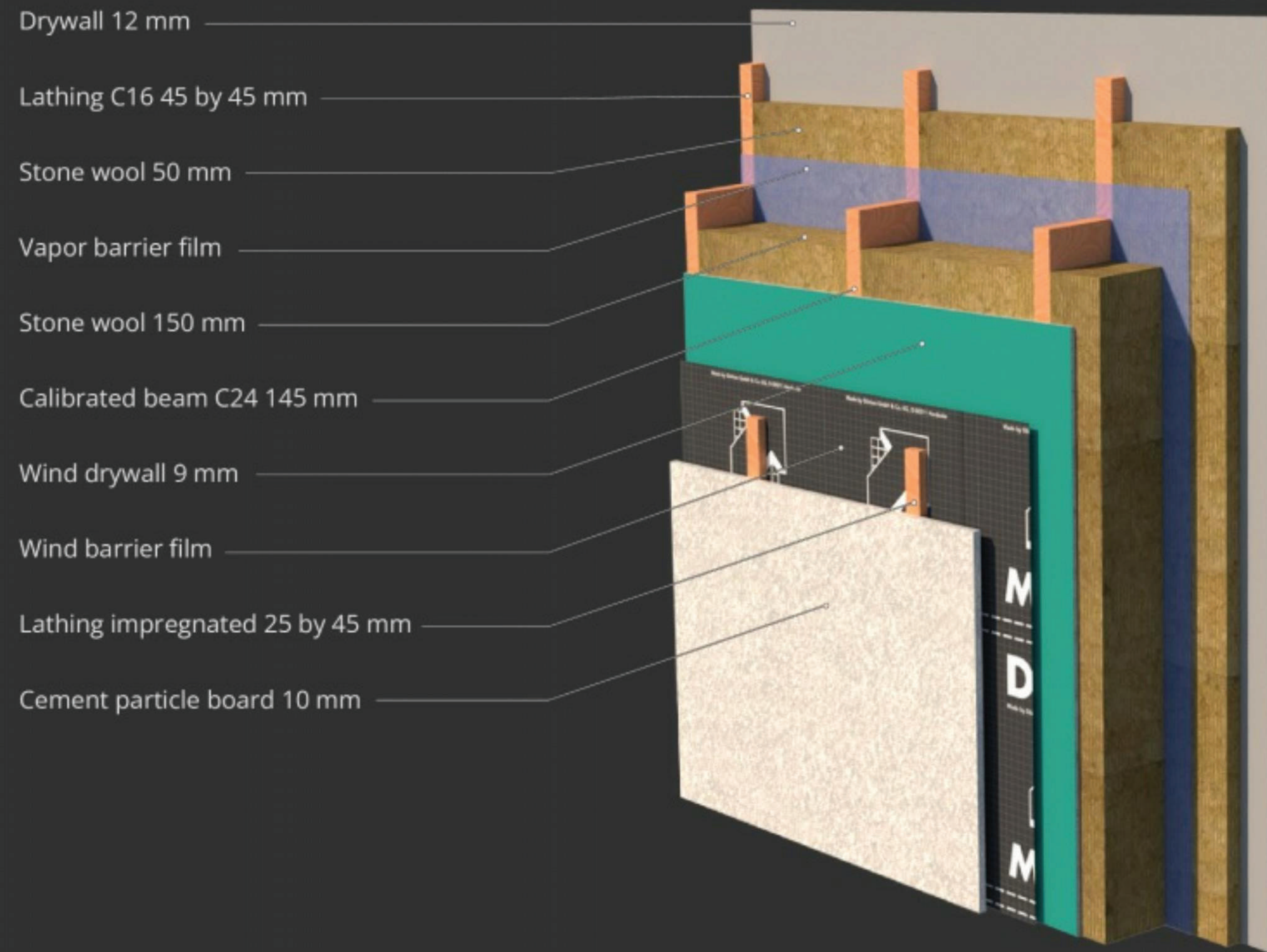
smart home option

outdoor blinds

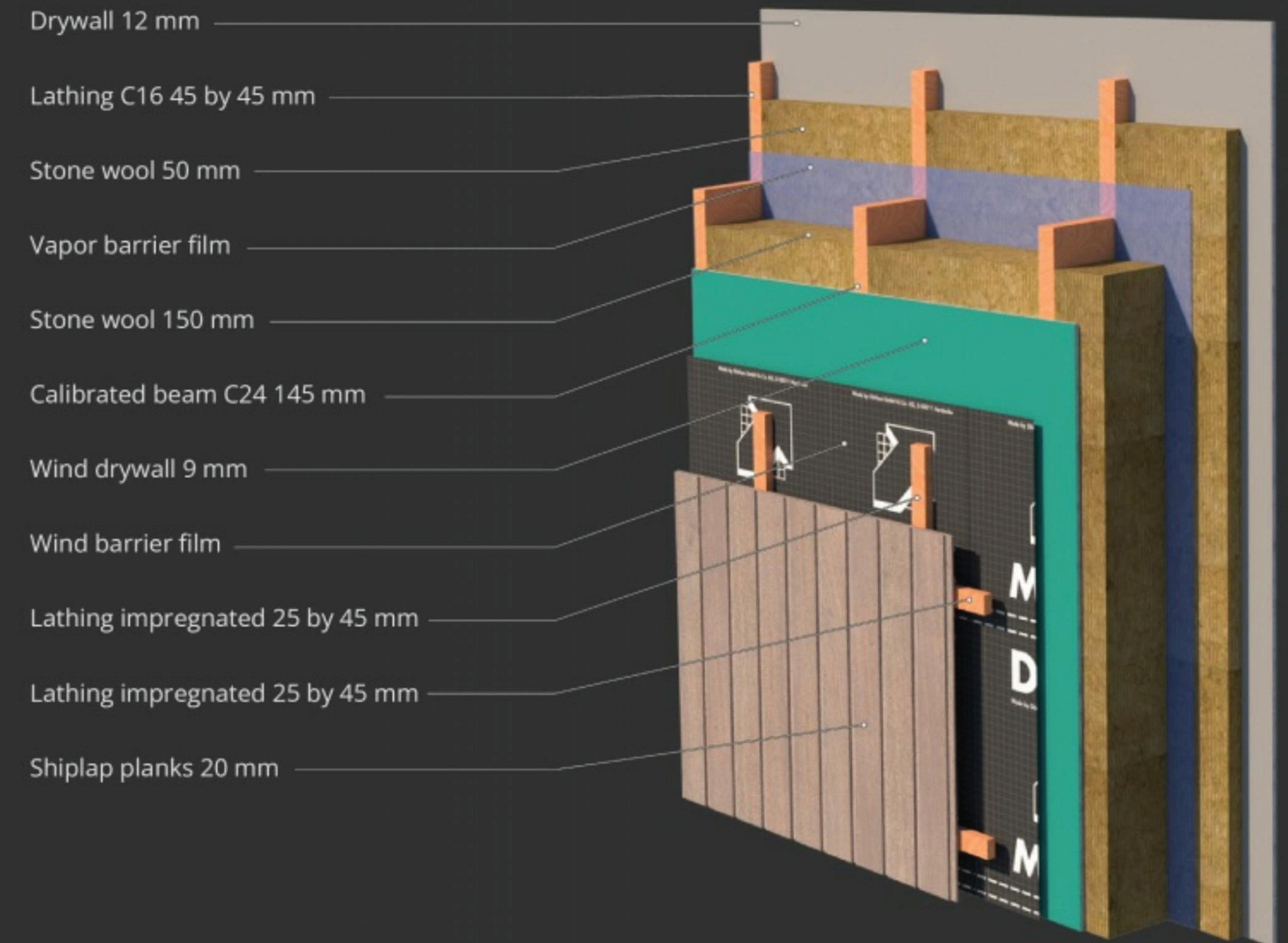
delivery

# Components we use:

## Wall

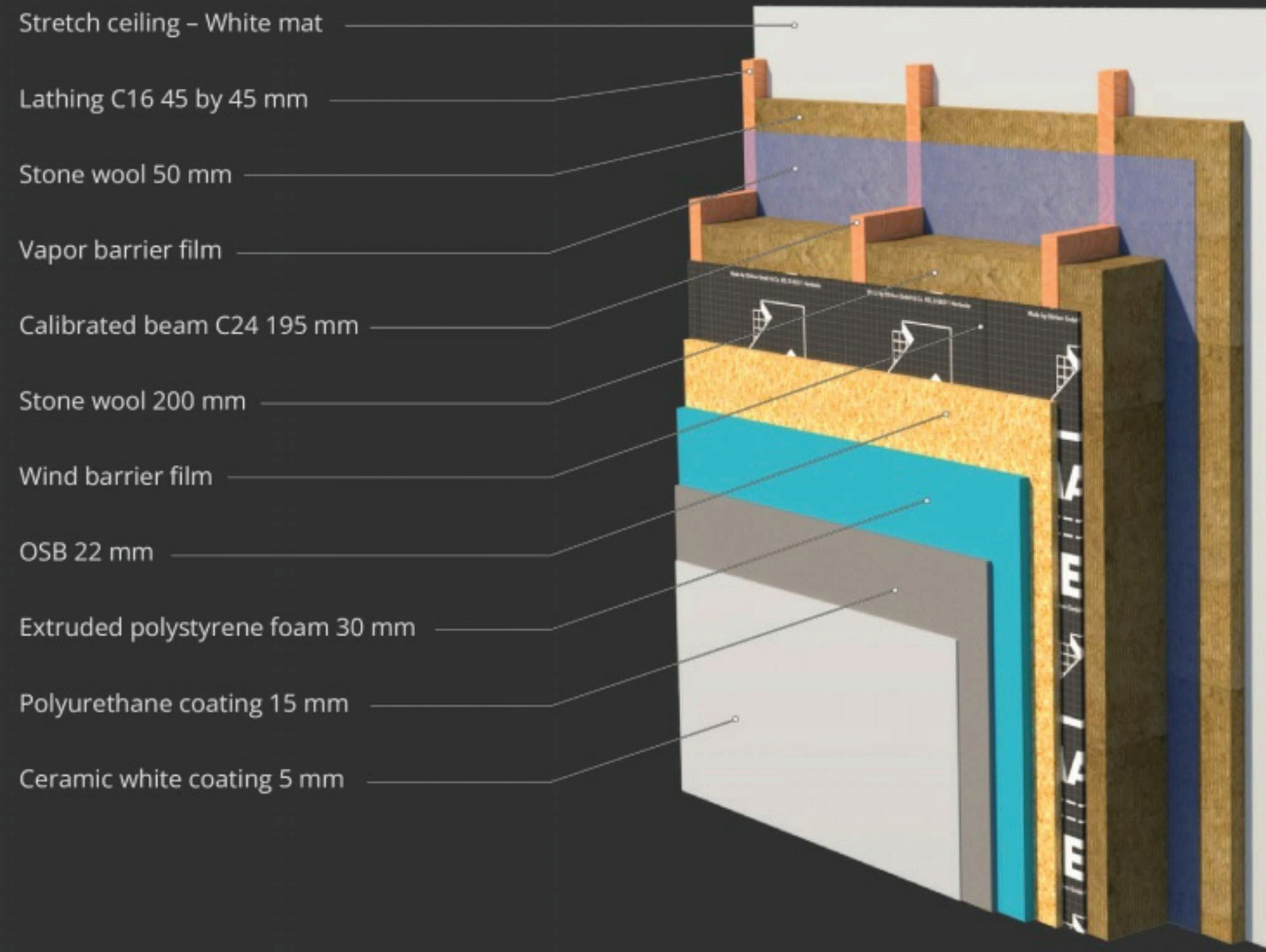


## Wall

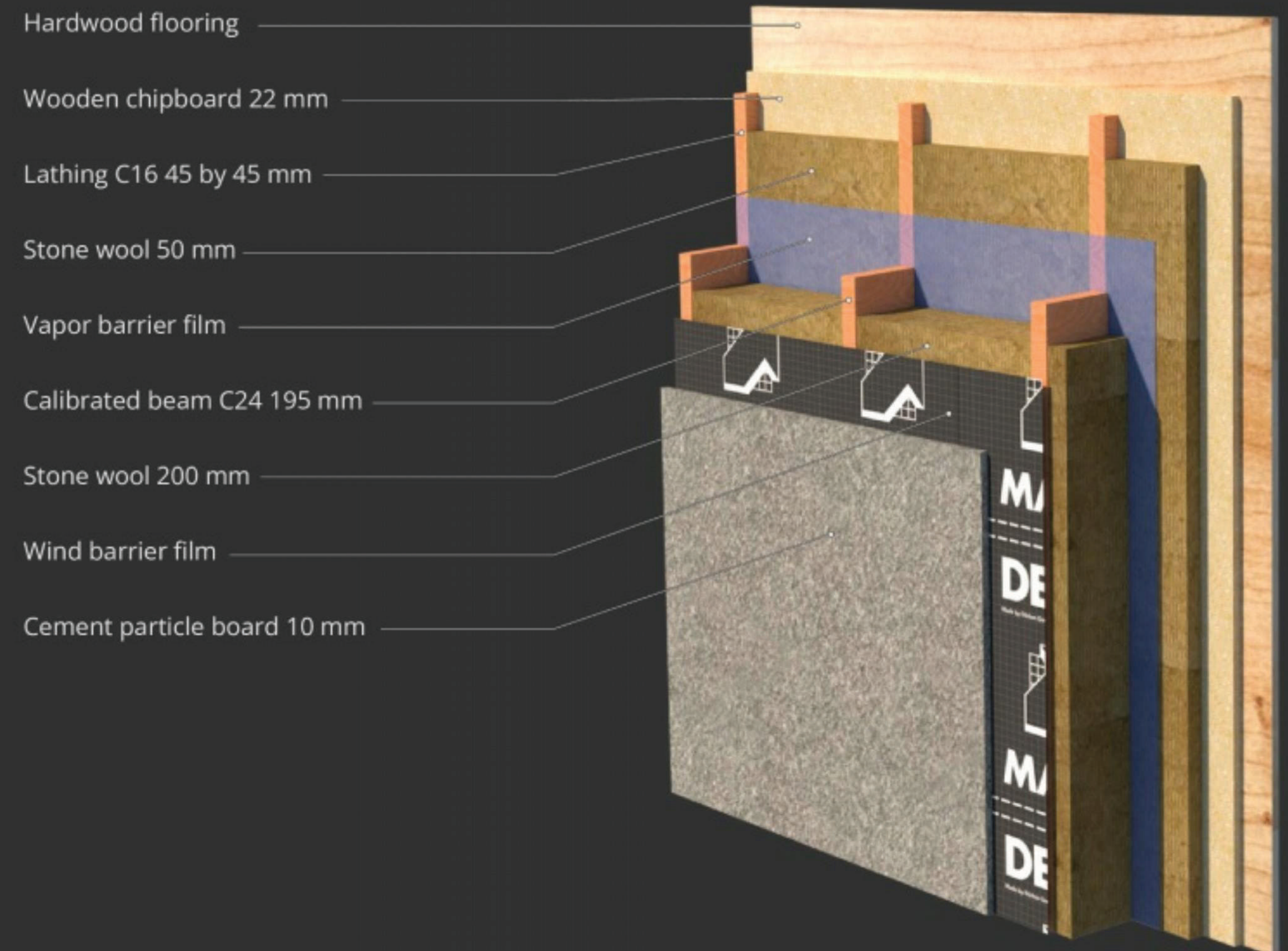


# Components we use:

## Roof



## Floor



# Components we use:

## Window

Number of internal chambers: **5**

Permissible thickness of double-glazed windows (mm): **40**

Heat Transfer Resistance Coefficient ( $\text{W}/\text{m}^2 \times ^\circ\text{C}$ ): **0,80**

