



YOUR 3D PRINTING SUCCESS STORY BEGINS HERE



# OUR OFFERING. MADE FOR VALUE MAKING.

## IGNITE

UPSCALE YOUR PRODUCTION

### MAXIMIZED PRODUCTIVITY

BUILD SIZE 600 x 400 x 400mm

200°C SMART HEATED CHAMBER (TBD)

FOCUS IN FEW MATERIALS "ULTEM9085 & PACF"



## ULTRA2

SUPERLATIVE OF PERFORMANCE

### MAXIMIZED PERFORMANCE

BUILD SIZE 330 x 180 x 180mm

250°C SMART HEATED CHAMBER

ACCESS TO ALL MATERIALS "PEEK, PEKK, ULTEM1010, PPSU"

INTEGRATED ANNEALING

**BOTH SYSTEMS ARE EQUIPPED WITH**  
INTEGRATED MATERIAL DRYING  
REMOTE CONTROL & LIVE FEED  
QUALITY ASSURANCE TECHNOLOGY  
DUAL EXTRUDER FOR SUPPORT MATERIALS

AEROSPACE  
RAILWAY  
DEFENSE  
MARINE  
GENERAL ENGINEERING  
**LARGE SIZE PARTS**  
**ULTEM9085/PA-CF PARTS**  
**ENGINEERING PARTS**  
**FOR ALL INDUSTRIES!**

## FOR WHO?

RESEARCH  
R&D  
EDUCATIONAL  
MEDICAL DEVICE  
OIL & GAS  
MATERIAL MANUFACTURERS  
**FINE DETAIL PARTS**  
**PEEK, PEKK, PPSU, ULTEM1010 PARTS**  
**FOR DEMANDING APPLICATIONS!**



# MINIFACTORY **CORNERSTONES**



## **PRODUCTIVE**

Improved technical solutions together with software optimizations enables increased output with well-known miniFactory quality.



## **STRONG**

Smart triple sensed heated chamber and optimized airflow ensure precise temperature management for stronger parts.



## **SMART**

Real-time quality assurance technology together with automatic production supervision ensure high-quality manufacturing.



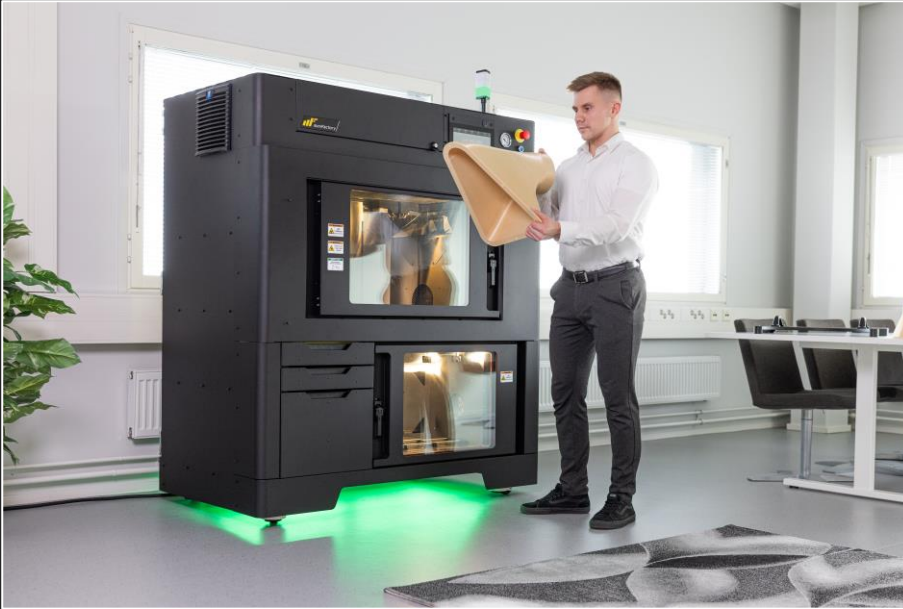
## **SMOOTH**

Usability due simplified user interface equipped with remote control lets you control the printer anywhere. Industry 4.0 compatible system.

# IGNITE

## UPSCALE YOUR PRODUCTION

Ignite is the ultimate solution that combines high temperatures, massive build size, advanced quality assurance technology and excellent cost effectiveness.



### ★ MASSIVE BUILD SIZE

With the miniFactory Ignite, you can think big! The Ignite offers an expansive printing space of 600 x 400 x 400mm, enabling you to bring your grandest ideas to life. Whether you're creating functional prototypes, large-scale models, or end parts, our printer can handle it all. Say goodbye to size limitations!

# IGNITE

## UPSCALE YOUR PRODUCTION

Ignite is the ultimate solution that combines high temperatures, massive build size, advanced quality assurance technology and excellent cost effectiveness.



### ★ AFFORDABLE EXCELLENCE

We understand that cost can be a significant barrier to 3D printing adoption. That's why Ignite is here to disrupt the market by rationalizing ROI. You get all the benefits of a high-performance technology without breaking the bank. The Ignite is built to last and it's an investment that pays off over time.



### ★ UNMATCHED PRODUCTIVITY

Time is money, and the Ignite saves you both. Thanks to its advanced technology and efficient printing processes, you'll experience improved productivity without compromising on quality. Get more done in less time, boosting your productivity to new heights.

# IGNITE

## UPSCALE YOUR PRODUCTION

Ignite is the ultimate solution that combines high temperatures, massive build size, advanced quality assurance technology and excellent cost effectiveness.



- ★ **MASSIVE BUILD SIZE** - 600 x 400 x 400mm
- ★ **TEMPERATURES** - BUILD CHAMBER +200C, BED 200C, NOZZLE 480C
- ★ **MATERIALS** - ULTEM9085, PACF, ABS, ASA, PEKK-A, PVDF etc. (PEEK, PEKK)
- ★ **EXTRUDERS** - 2 SEPARABLE EXTRUDERS FOR SUPPORT MATERIALS
- ★ **QUALITY ASSURANCE** - MINIFACTORY AARNI QA (INCL. REMOTE + CAMERA)
- ★ **MATERIAL DRYING** - INTEGRATED
- ★ **FOR WHO?**

AEROSPACE

RAILWAY

DEFENSE

MARINE

GENERAL ENGINEERING

**LARGE SIZE PARTS**

**ULTEM9085/PACF/ENGINEERING POLYMER PARTS**

**FOR ALL INDUSTRIES!**

# IGNITE USE CASES



★ **Aerospace duct:**

Part size: 505x360x390mm, weight 1,5kg

Material: ULTEM AM9085F

Printing time: 24h



★ **Lay-up mold:**

Part size: 530x195x40mm, weight 0,85kg

Material: PA-CF

Printing time: 18h

# ULTRA2

## SUPERLATIVE OF PERFORMANCE

Ultra2 is the perfect solution when you want a 3D printer with maximum performance and versatility.



### ★ UNMATCHED PERFORMANCE

Ultra2's advanced 250C heated chamber not only unlocks the ability to utilize materials like PEEK, PEKK, ULTEM1010, PPSU, PSU, and TPI, but it also empowers professionals in R&D to push boundaries. With Ultra2, you're not just investing in a 3D printer; you're investing in limitless possibilities.



# ULTRA2

## SUPERLATIVE OF PERFORMANCE

Ultra2 is the perfect solution when you want a 3D printer with maximum performance and versatility.



### ★ PRIME PRODUCTION

Built for top-tier applications where quality is key. With streamlined processes ready for tough demands, it's your reliable project partner. Cost-effective solution and trusted by multiple industries in over 20 countries.



### ★ ENHANCED VERSATILITY

One platform, all materials. Embrace the open-material system — Ultra2 is the quintessential 3D printing powerhouse. Dive into a world where research, development, and delivery converge seamlessly. Ultra2 is equipped with integrated annealing system.

# ULTRA2

## SUPERLATIVE OF PERFORMANCE

Ultra2 is the perfect solution when you want a 3D printer with maximum performance and versatility.



- ★ **BUILD SIZE** - 330 x 180 x 180mm
- ★ **TEMPERATURES** - BUILD CHAMBER 250C, BED 250C, NOZZLE 480C
- ★ **MATERIALS** - TPI, PPSU, PSU, PPS, ULTEM1010, ULTEM9085, PEEK, PEKK, PACF, ABS, ASA, PEKK-A, PVDF etc.
- ★ **EXTRUDERS** - 2 SEPARABLE EXTRUDERS FOR SUPPORT MATERIALS
- ★ **QUALITY ASSURANCE** - MINIFACTORY AARNI QA (INCL. REMOTE + CAMERA)
- ★ **MATERIAL DRYING & ANNEALING**- INTEGRATED
- ★ **FOR WHO?**
  - RESEARCH
  - R&D
  - EDUCATIONAL
  - MEDICAL DEVICE
  - OIL & GAS
  - MATERIAL MANUFACTURERS
  - FINE DETAIL PARTS**
  - PEEK, PEKK, PPSU, ULTEM1010 PARTS**

**FOR DEMANDING APPLICATIONS!**

# ULTRA2 USE CASES



★ **Satellite housing part**

Part size: 120x90mm

Material: PEEK-CF

★ **Sterilization tray**

Part size: 230x140x100mm

Material: PPSU



★ **Sealing ring**

Part size: 150x10mm

Material: PEKK

★ **Mechanical gear**

Part size: 90x15mm

Material: IGLIDUR



# SPECIFICATIONS

## IGNITE

200°C  
200°C  
480°C

AC-SERVO MOTORS & BALL SCREWS CLASS C3  
0,016MM/600MM  
300MM/S  
0,4 – 1,0MM  
+150G/HR (TBD)

2, SEPARABLE EXTRUDERS (SUPPORT MATERIALS)  
600MM X 400MM X 400MM

ULTEM9085, PA, PC, ASA, ABS, PVDF, (PEKK, PEEK) + MORE  
+ WIDE RANGE OF GF/CF COMPOSITES AND ESD POLYMERS

INTERNAL VACUUM SYSTEM  
FULLY AUTOMATIC CALIBRATION  
10" TOUCH SCREEN  
ACTIVATED CARBON FILTERING

1,75MM  
LIQUID COOLING & AIR COOLING  
JAM & RUNOUT SENSORS

AARNI – QUALITY ASSURANCE TECHNOLOGY  
REMOTE CONTROL + ON-BOARD CAMERA  
MATERIAL DRYING CHAMBER  
SMART MAINTENANCE INTERVALS  
FULL SYSTEM STATISTICS

SIMPLIFY 3D, CURA  
CE, UKCA  
155 X 85 X 175CM – 520KG  
400V/16A 3-PHASE

CHAMBER TEMPERATURE  
PLATFORM TEMPERATURE  
EXTRUDER TEMPERATURE

MECHANICS  
REPEATABILITY  
MAX. SPEED  
NOZZLE SIZES  
MAX. PRODUCTIVITY

EXTRUDERS  
BUILD SIZE

MATERIALS

BUILD PLATFORM  
LEVELING  
UI  
SAFETY

FILAMENT DIAMETER  
COOLING  
SENSING

INTEGRATED FEATURES

SLICING SOFTWARE  
CERTIFICATION  
DEVICE MEASUREMENT  
POWER REQUIREMENT

## ULTRA2

250°C  
250°C  
480°C

AC-SERVO MOTORS & BALL SCREWS CLASS C5  
0,025MM/400MM  
200MM/S  
0,3-1,0MM  
~40G/HR

2, SEPARABLE EXTRUDERS (SUPPORT MATERIALS)  
330MM X 180MM X 180MM

TPI, ULTEM1010, PPSU, PSU, PPS, PEKK, PEEK, ULTEM9085, PVDF, PA, PC + MORE  
+ WIDE RANGE OF GF/CF COMPOSITES AND ESD POLYMERS

INTERNAL VACUUM SYSTEM  
FULLY AUTOMATIC CALIBRATION  
10" TOUCH SCREEN  
ACTIVATED CARBON FILTERING

1,75MM  
LIQUID COOLING & AIR COOLING  
JAM & RUNOUT SENSORS

AARNI – QUALITY ASSURANCE TECHNOLOGY  
REMOTE CONTROL + ON-BOARD CAMERA  
MATERIAL DRYING CHAMBER  
SMART MAINTENANCE INTERVALS  
FULL SYSTEM STATISTICS  
INTEGRATED ANNEALING SYSTEM

SIMPLIFY 3D, CURA  
CE, UKCA  
100 X 80 X 190CM – 320KG  
400V/16A 3-PHASE

# MATERIALS **APPROVED** BY THE INDUSTRIES

With miniFactory you have access for the widest material range on the market without any additional licenses or fees.

From commodity and engineering polymers all the way up to the most demanding high-performance polymers and composites. Material range is many times wider than in "closed systems" or in the systems with lower chamber temperature.

**ULTRA2  
IGNITE**



**ENGINEERING MATERIALS**

Produce parts utilizing a broad spectrum of established engineering polymers.

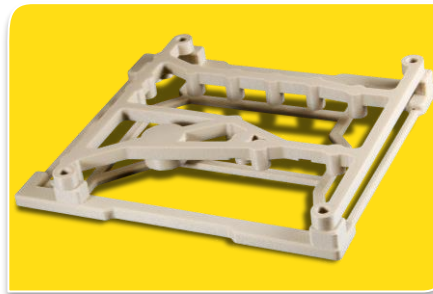
**ULTRA2  
IGNITE**



**CARBON FIBER MATERIALS**

Build strong and lightweight parts by choosing carbon fiber reinforced polymers to the metal replacement applications.

**ULTRA2**



**PEEK/PEKK/PAEK MATERIALS**

Make valuable PEEK parts in-house with all materials of the PAEK Polymer family.

**ULTRA2  
IGNITE**



**VALIDATED MATERIALS**

Making parts for aerospace or motorsports?  
Are you looking for a material compatible for EN45455 or UL94 V-0?

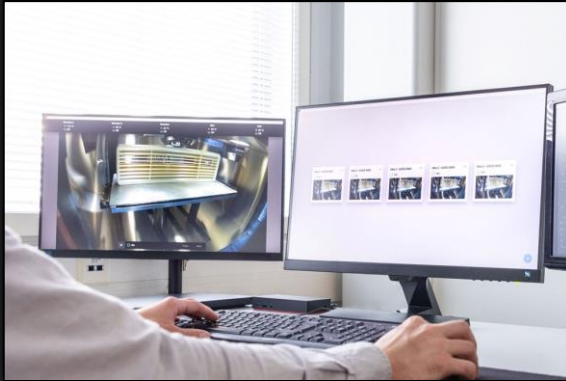
# QUALITY ASSURANCE **TECHNOLOGY**

OUR STATE-OF-THE-ART QUALITY ASSURANCE TECHNOLOGY TRANSFORMS YOUR MANUFACTURING EXPERIENCE.



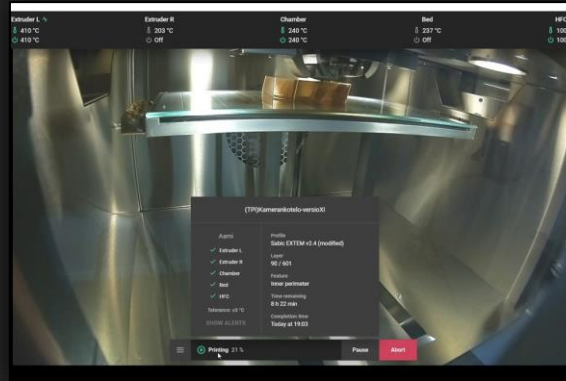
# THREE-LAYER **QUALITY** ASSURANCE

BENEFIT FROM REAL-TIME MONITORING, LAYER-BY-LAYER INSPECTION, AND A COMPREHENSIVE PROCESS HISTORY, ENSURING TOP-NOTCH QUALITY AND RELIABILITY IN 3D PRINTING.



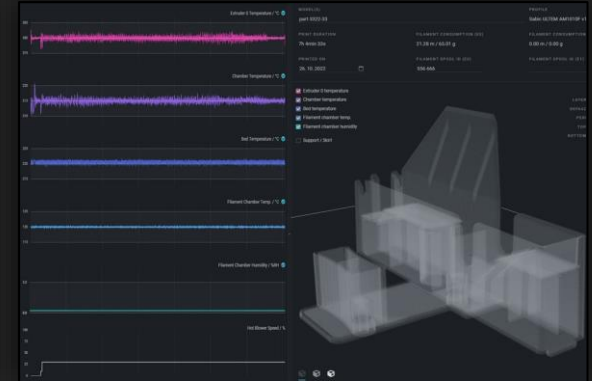
## REMOTE CONTROL & LIVE FEED

Install **Remote control software** on your computer and get complete control of your miniFactory ecosystem. The remote control software can be used to manage, monitor and plan production using one or multiple devices.



## PRODUCTION SUPERVISION

**Real-time supervision** is a completely new and unique feature that takes production monitoring to the next level. The software monitors quality and, thanks to the **Smart Command** feature, works independently in different situations.



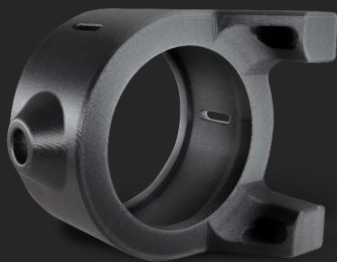
## LAYER-BY-LAYER INSPECTION

**Layer-by-layer 3D printing quality assurance** ensures that the process has been completed as desired. Create a manufacturing document that highlights the entire printing process and proves the quality.

# WHICH **PART** WOULD YOU PICK?

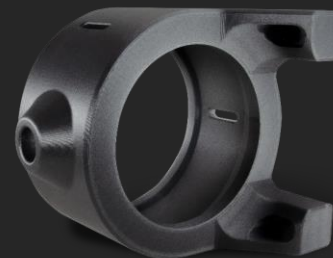
MINIFACTORY QUALITY ASSURANCE TECHNOLOGY – A PREREQUISITE FOR RELIABLE MANUFACTURING.  
CREATES TRUST AND TRANSPARENCY IN PART PRODUCTION AND ENSURE THE PART IS CERTIFIED AND COMPLETED AS DESIRED.

## WITH MINIFACTORY QUALITY ASSURANCE TECHNOLOGY



MATERIAL HISTORY  
OPERATOR INFORMATION  
LAYER-BY-LAYER VISUALIZATION  
PROCESS HISTORY  
MANUFACTURING REPORT  
MASTER SAMPLE – PROVEN QUALITY

## NO QUALITY ASSURANCE

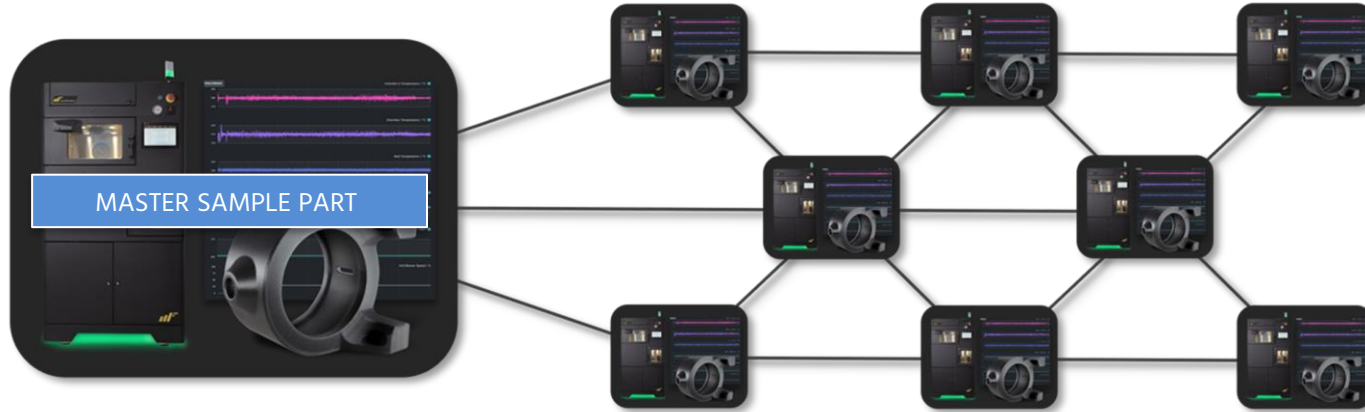




# ANYTIME. ANYWHERE. **VERIFIED.**

THE QUALITY ASSURANCE TECHNOLOGY COMPARES THE DATA AND CONFIRMS THE REPEATABILITY OF THE PRODUCTION.

STORE MANUFACTURING PARAMETERS ON DIGITAL “MASTER SAMPLE” DOCUMENT. TO ENSURE THE SAME QUALITY OF THE CORRESPONDING PARTS ANYTIME AND ANYWHERE IN THE FUTURE, THE QUALITY ASSURANCE TECHNOLOGY COMPARES THE DATA AND CONFIRMS THE REPEATABILITY OF THE PRODUCTION.



# THREE **REASONS** FOR MINIFACTORY

## RELIABLE AND EASY WORKFLOW

We have packed our **10 years of experience** into the straightforward and **understandable usability of our products**, enabling you to produce successful 3D prints time after time.

As high-performance polymer printing is technology-intensive, it can easily become complex. However, thanks to our experience, we have succeeded in making the miniFactory Ultra printer **easy to use**.

## WARRANTY UP TO 5 YEARS

Our technology is designed for daily industrial use. The assembly expertise, combined with high-quality components and a comprehensive service offering, enables a **warranty of up to 5 years**.

With our **optimized service plan** and authorized support network, you have **local partner to support you throughout the life-cycle of the system**.

## SENSIBLE INVESTMENT AND SATISFIED CUSTOMERS

The miniFactory Ultra 3D printer is a unique solution that enables reliable 3D printing of high-performance polymers. Due to its durable features, it is **one of the most cost-effective solutions on the market**.

We have delivered miniFactory Ultra 3D printers to more than 20 countries. **Our customer satisfaction is top class all around the world**, as our equipment and services are supreme.



# OUR TECHNOLOGY IS TRUSTED BY



ALSTOM



SAFRAN

BAE SYSTEMS



SKF



ACC  
AUTOMOTIVE CELLS CO



Deutsches Zentrum  
für Luft- und Raumfahrt  
German Aerospace Center

PERMASCAND

KIMYA  
Additive Manufacturing by AM-30-300

BASF | FORWARD

SME  
Elektro-Group

UNIVERSITY OF  
EXETER

ANLAUF  
FABRIK

XAMK  
South-Eastern Finland  
University of Applied Sciences



# CONTACT US



**miniFactory Oy Ltd**

TIEDEKATU 2

60320 SEINÄJOKI

FINLAND

VAT ID: FI25182357

[WWW.MINIFACTORY.FI](http://WWW.MINIFACTORY.FI)

DISCLAIMER: INFORMATION AND RECOMMENDATIONS CONTAINED IN THIS DOCUMENT ARE GIVEN IN GOOD FAITH. HOWEVER, MINIFACTORY MAKES NO EXPRESS OR IMPLIED REPRESENTATION, WARRANTY OR GUARANTEE (i) THAT ANY RESULTS DESCRIBED IN THIS DOCUMENT WILL BE OBTAINED UNDER END-USE CONDITIONS, OR (ii) AS TO THE EFFECTIVENESS OR SAFETY OF ANY DESIGN OR APPLICATION INCORPORATING MINIFACTORY'S MATERIALS, PRODUCTS, SERVICES OR RECOMMENDATIONS. MINIFACTORY SHALL NOT BE RESPONSIBLE FOR ANY LOSS RESULTING FROM ANY USE OF ITS MATERIALS, PRODUCTS, SERVICES OR RECOMMENDATIONS DESCRIBED IN THIS DOCUMENT.

Each user is responsible for making its own determination as to the suitability of MINIFACTORY'S materials, products, services or recommendations for the user's particular use through appropriate end-use and other testing and analysis. This MINIFACTORY data is for comparative purposes only.