

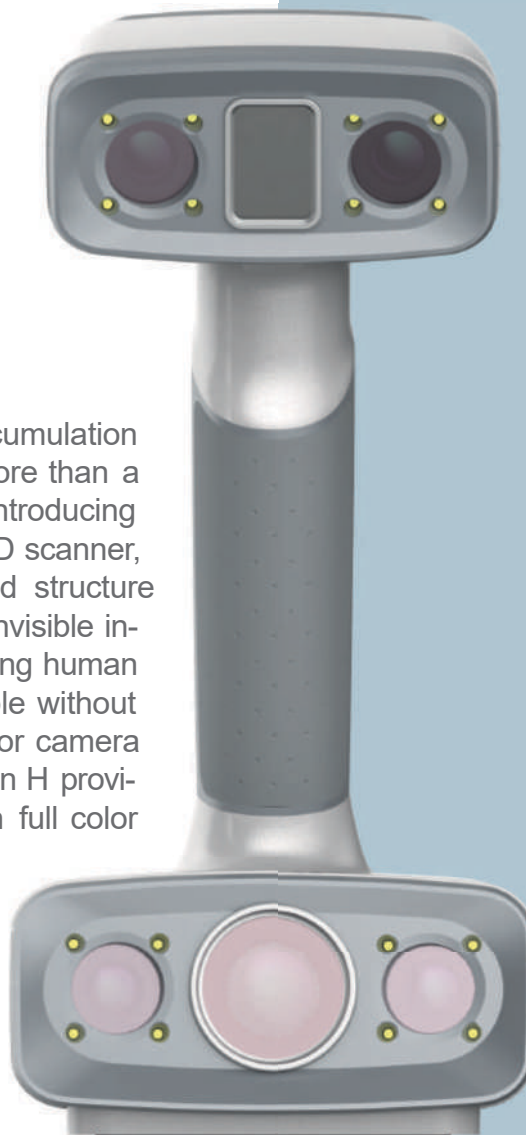
EinScan H

Hybrid LED & Infrared Light Source
Handheld Color 3D Scanner



SHINING3D®

With strengths of technical accumulation on 3D vision technology in more than a decade, SHINING 3D is now introducing its new developed handheld 3D scanner, EinScan H. Based on hybrid structure light technology of LED and invisible infrared light, EinScan H is making human face scanning more comfortable without strong light. With a built-in color camera and large field of view, EinScan H provides high quality 3D data with full color ready-to use in minutes.



APPLICATIONS

ART AND HERITAGE
Digital Sculpture Design

FORENSICS
Evidence Analysis and Archiving

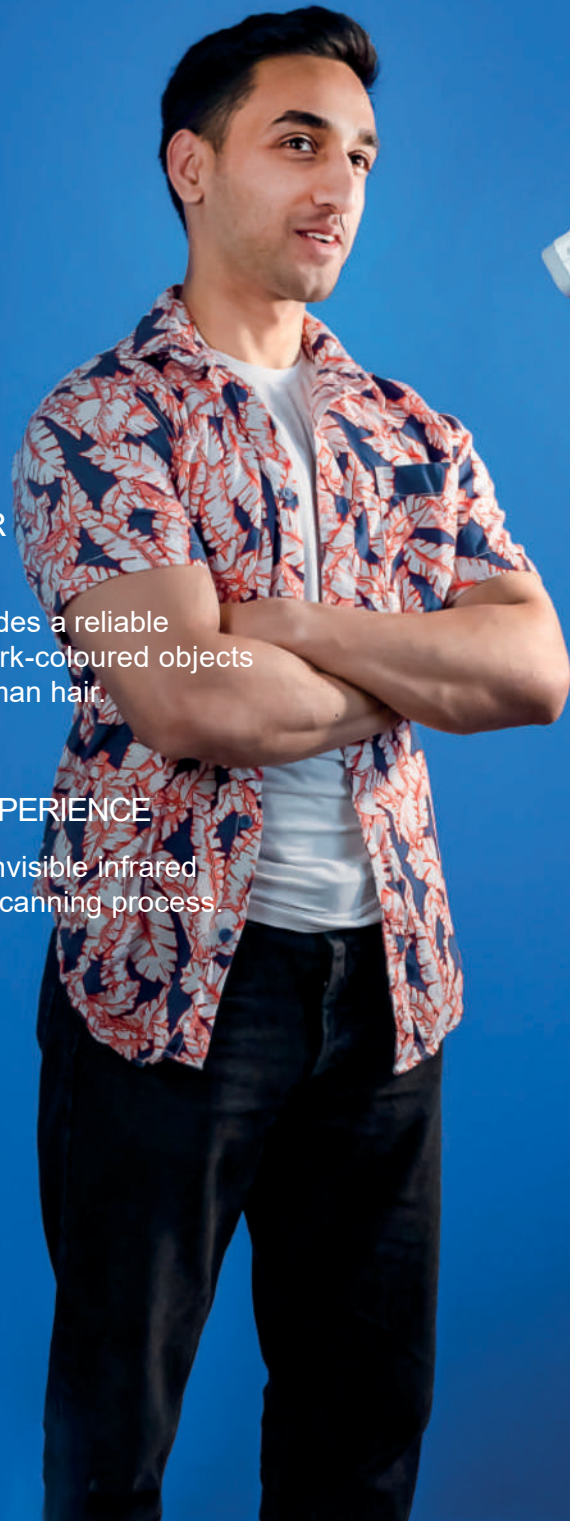
VIRTUAL DISPLAY
VR/AR Display

CUSTOMIZATION
Consumer goods customization

HEALTHCARE
Orthotics & Prosthetics, Plastic Surgery, Digital Diagnosis & Treatment

DIGITAL ENTERTAINMENT
Animation and Games

FULL BODY SCAN SOLUTION



THE ERA OF SCANNING WITH HAIR ACQUISITION



The invisible infrared light source provides a reliable solution to the problem of acquiring dark-coloured objects and enables an easy acquisition of human hair.

INVISIBLE LIGHT 3D SCANNING EXPERIENCE



The new face scanning mode adopts invisible infrared light enabling a safe and comfortable scanning process.



Scan Data

TECHNICAL SPECIFICATIONS

EinScan H

Scan Mode	Standard Scan	Body Scan	Face Scan
Light Source	White Light, visible		Infrared light, invisible
Safety	LED light (eye-safe)		CLASS I (eye-safe)
Scan Accuracy	Up to 0.05mm		Up to 0.6mm
Volumetric Accuracy*	0.05+0.1mm/m		/
Scan & Align Speed	1,200,000points/s, 20FPS		720,000points/s, 20FPS
Align Modes	Markers-, Feature-, Hybrid- and TextureAlignment		FeatureAlignment
Camera Frame Rate			55FPS
Working Distance			470mm
Depth of Field	200-700mm		200-1500mm
Maximum ScanRange	420mm x 440mm		780mm x 900mm
Point distance	0.25mm-3mm	0.5mm-3mm	
Built-in Color Camera			Yes
Color Scanning			Support
Connection Standard			USB 3.0
Output Format			OBJ; STL; PLY; P3; 3MF
Dimension			108mm x 110mm x 237mm
Weight			703g
Certification			CE, FCC, ROHS, WEEE, KC
Recommend Configuration			CPU: Core i7 - 9850 H or better - Memory: 32GB or better Graphics Card: NVIDIA RTX 2060 with 6GB or higher

* Volumetric accuracy refers to the relationship between 3D data accuracy and object size; the accuracy is reduced by 0.1mm per 100cm (standard scan & body scan). The conclusion is obtained by measuring the center of sphere under marker alignment.

Authorized Reseller:

VGERS.r.l

Registered office: Via Bentivogli, 4 40055
Castenaso (BO) - ITALY
P.IVA - 03387001203

Headquarters: Via Oberdan, 2 - 40055
Villanova di Castenaso (BO) - Italia
Ph & Fax: +39 (0)51 802864
E-mail: info@vger.eu - www.vger.eu

V·GER
COMPETENCE IN 3D SCANNING