



TOOL STORAGE & ORGANIZATION



WHEREVER THE JOB TAKES YOU,
COUNT ON JAMESON™





TOOL STORAGE

**BUCKET & BOOM
TOOL HOLDERS
CANVAS TOOL BAGS**

Jameson heavy duty bucket mount tool holders offer safe, convenient storage for bucket truck tools. Water repellent and UV resistant, holders withstand extreme weather conditions.

Adjustable clamp bracket allows tool holder to fit any size bucket, with or without liner, and mounts inside or outside bucket.

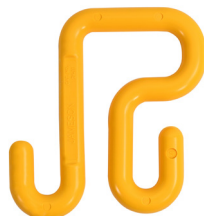
SAFE, CONVENIENT STORAGE WHEREVER THE JOB TAKES YOU



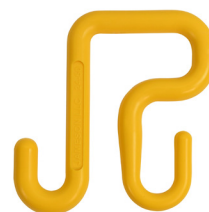
TOOL STORAGE & ORGANIZATION



Part Number	Description
24-01	Polymer Hook with standard end, fits up to 2" bucket lips
24-01-R	Polymer Hook with standard end, fits up to 2" bucket lips Retail



Part Number	Description
24-11	Polymer Hook with standard end, fits up to 3" bucket lips
24-11-R	Polymer Hook with standard end, fits up to 3" bucket lips Retail



Part Number	Description
24-50	Polymer Hook with tapered end, fits up to 3" bucket lips
24-50-R	Polymer Hook with tapered end, fits up to 3" bucket lips Retail



Part Number	Description
24-40	Canvas Tool Bag
15 Inside Pockets, 2 Grommets For Hooks 15" X 7" X 10"	



Part Number	Description
24-40S	Bag & Two S Hooks
15 Inside Pockets, 2 Grommets For Hooks 15" X 7" X 10"	



Part Number	Description
24-41	Canvas Tool Bag
15 Outside Pockets, Rope with Swivel Hook, Reinforced Hard Plastic Base, 2 Grommets for S Hooks 15" X 7" X 10"	



Part Number	Description
24-41S	Bag & Two S Hooks
15 Outside Pockets, Rope with Swivel Hook, Reinforced Hard Plastic Base, 2 Grommets for S Hooks 15" X 7" X 10"	



Part Number	Description
24-42	Canvas Tool Bag
13 Outside Pockets, Web Handles, 2 Grommets for S Hooks 15" X 7" x 10"	



Part Number	Description
24-42S	Bag & Two S Hooks
13 Outside Pockets, Web Handles, 2 Grommets for S Hooks 15" X 7" x 10"	

TOOL STORAGE & ORGANIZATION



Part Number	Description
24-19	Chainsaw Scabbard With Handsaw Holder
Handsaw holders on both sides for left-hand/right-hand convenience. Constructed of durable HDPE to protect against blade wear and extreme weather. Supports Z133-2017: 5.2.13 Compliance	



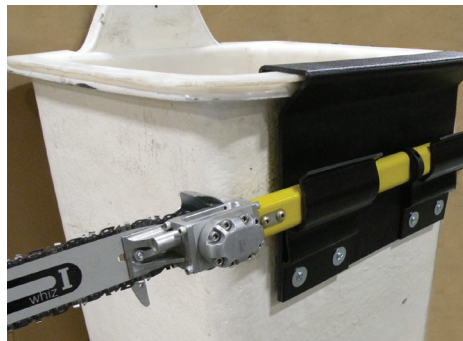
Part Number	Description
24-14L	Chainsaw Scabbard With Removable Liner
Fits standard and hydraulic pistol grip chainsaws. Features a replaceable liner that protects scabbard from chainsaw heat and blade. Adjustable clamp bracket.	
24-14LIN	Replacement Liner for 24-14L



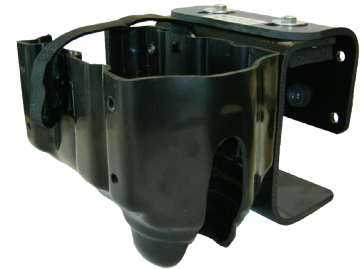
Part Number	Description
24-14A	Chainsaw Scabbard
Fits standard and hydraulic pistol grip chainsaws. Adjustable clamp bracket	



Part Number	Description
24-18L	Fiberglass Chainsaw Scabbard With Removable Liner
Features high gloss gel coat finish to prevent fiberglass blooms and splinters. Fits standard and hydraulic pistol grip chainsaws. Adjustable clamp bracket.	
24-18LIN	Replacement Liner for 24-18L



Part Number	Description
24-23	Long Reach Chainsaw Holder
Holds round and oval handled long reach chainsaws and gas powered pole pruners (standard and telescoping) for squirt boom trucks. Fixed mount. 18" x 13"	



Part Number	Description
24-12A	Impact Tool Holder
One-piece construction with adjustable clamp bracket. Accommodates most wrenches & drills.	

TOOL STORAGE & ORGANIZATION



Part Number	Description
24-12AH	Impact Tool Holder With Scabbard
Expanded opening accommodates the most common wrenches and drills. Features two spare drill bit holders and adjustable clamp bracket.	



Part Number	Description
24-25	Tool Tray
Leather tool pouches and drop-in loops. Fixed bucket mount. 22.5" x 18"	



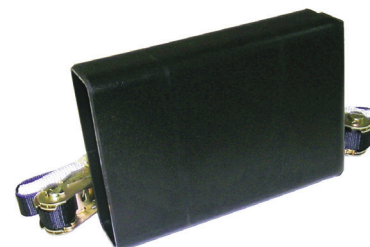
Part Number	Description
24-17	Tool Tray
Removable dividers and fixed bucket mounts. 23" x 14" x 8"	



Part Number	Description
24-15D	Double Pocket Tool Holder
Inner pocket: 6.25" x 2.25" x 17" Outer pocket: 5.25" x 12.5" x 15" • Thick neck/back for rigidity & strength • Tapered pocket edges for increased strength • Long back for a variety of tools • Drain holes • Ribbed inside pocket base for increased strength when tools are dropped in pockets	

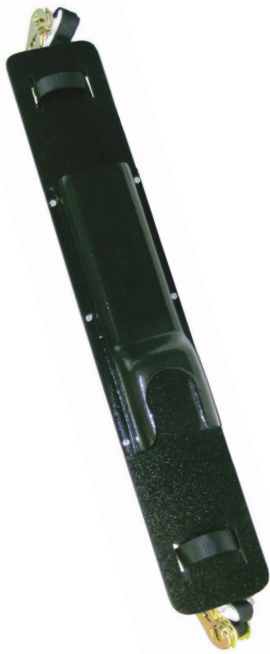


Part Number	Description
24-02	Circular Saw Holder
Includes strap, ratchet & handle unit 12" x 9"	
24-02B	Replacement Saw Box with Strap & Ratchet



Part Number	Description
24-04	Hydraulic Pruner Holder
Includes strap, ratchet & handle unit 12" X 13"	
24-04B	Replacement Pruner Box with Strap & Ratchet

TOOL STORAGE & ORGANIZATION



Part Number	Description
24-03B	Long Reach Chainsaw Holder
Fits most long reach chain saws. Includes straps, ratchets and handle unit. 32" X 5"	
24-03F	Fits Fairmont Style Chainsaw



Part Number	Description
24-03GUARD	Boom Guard
Mount on boom in front of tool holder to protect boom when inserting tool into holder. Includes straps, ratchets & handle unit. 32" X 5"	



Part Number	Description
24-14A	Chainsaw Scabbard
Fits standard and hydraulic pistol grip chainsaws. Adjustable clamp bracket	



Handle Unit Included With All Boom Mount Tool Holders

Ratchet strap fastens handle holder securely into a fixed position on boom. Rubberized coating prevents tool handle from sliding out of upper holder box. Fits round & square booms.

Part Number	Description
24-04R	Replacement Handle Unit Handle, Strap & Ratchet
24-08R	Handle Holder Only
24-09R	Strap With Ratchet



WHEREVER THE JOB TAKES YOU,
COUNT ON JAMESON™



JAMESONTOOLS.COM

800.346.1956

PD_2022-35
REV 08/2022