

What you need -

White Line MDF board 3mm thick. (We buy 1200x600 size sheets for under \$8 each)
Spray Adhesive - Selleys Kwik Grip Spray Contact Adhesive. (Just under \$20 currently)
Your diamond dot canvas.

Tools you need -

A knife – box cutter type with good blades - make sure it's fresh and sharp.

- OR you can use a table saw if you have one.

A WIDE metal ruler is the best option or you can use aluminium extrusion angle bracket.

Your pool noodle. (about 30-40cm long is enough)

Microfibre Cloth.

You may want a piece of MDF to sit underneath while you are cutting, or a good cutting mat.

Important - You want to work with the white melamine side facing up.

Measuring -

Measure up the size of the board needed, ensure your lines are straight and square. Use the wide metal ruler for best results.

If this is a full drill kit, you want to leave a little bit of extra space around the edge. EG if the print on the canvas is 25cm, make your board 25.4cm so you have a small border. You can always paint the border if need be, or use washi tape in a colour of your choosing.

If this is a special drill kit and the dots do not go close to the edge of the picture, you may want to go slightly smaller so the printed border wraps around the board slightly

Cutting -

If you have access to a table saw then set the guide plate to the size needed and cut nice and straight.

If no saw then use the wide metal ruler/straight edge and the knife:

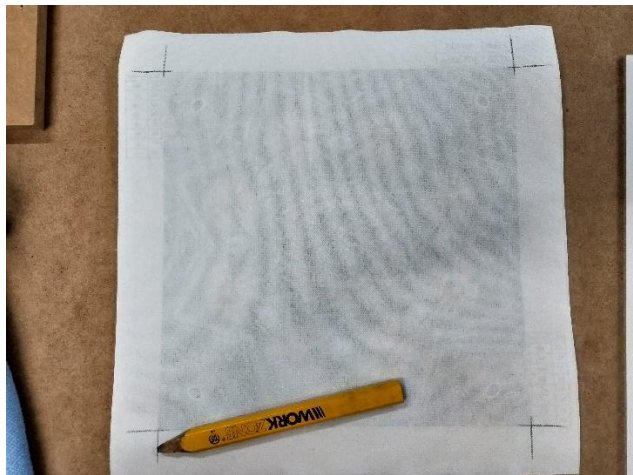
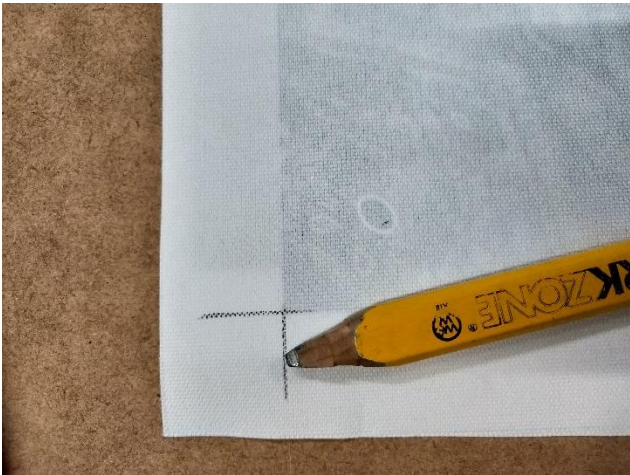
The first score - use very little pressure, you just want to mark out the cut. Do a few light scores, then you can apply more pressure to cut through the board. Keep following the groove with the knife in multiple cuts, how many depends on how much pressure you can apply. You will hear a cracking sound as you cut through the deeper levels, this indicates you are almost through. At this point lifting the board and bending it along the cut should snap it apart.

Once you have cut through, you can use the side of the knife blade to scrape off the raised edges. You can also use sandpaper or a light file if you like.

Once you have finished cutting use your microfibre cloth to wipe off any excess dust.

Marking the canvas -

Flip your canvas over so that the picture is facing downwards. You want to mark the corners with a square cross that extends outside the print so that you can see where to put the board once you have sprayed it.



If the print is too faint then use a light source behind the print. (light pad, monitor/tablet screen with white picture) Sometimes there is no print and all white background, then just measure it up and draw a square.

Spraying -

Spray evenly within the borders of the image on your canvas holding the nozzle about 15-20cm away.

- Do not do the edges yet, that is a future step.

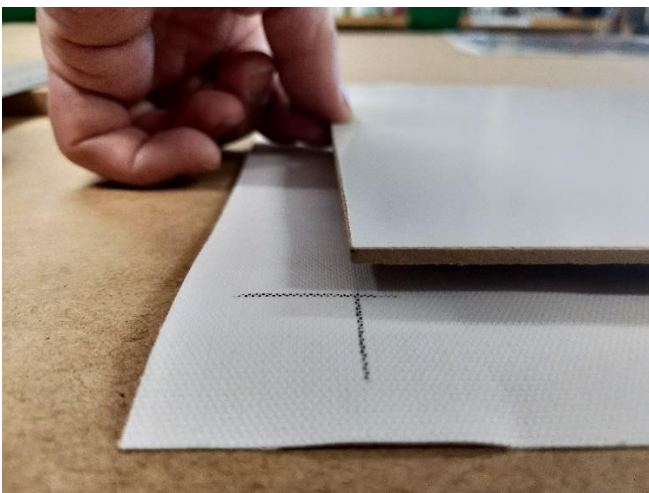
You will want to see the canvas looking damp and slightly glossy, not enough glue will look dry and probably won't stick well, too much glue and it will look like white froth and messy. It will take some practise to find a good balance. Try to cover the area completely and as evenly as possible.

Now spray the WOOD side of the melamine board NOT the white side. Same as above, it needs to look evenly damp but not too much that it turns white and frothy.

WAIT for about 5 mins for the glue to set and go tacky. If you put too much glue on it may need longer.

Now hold the board above the canvas and slowly lower it down using the guide markers we made earlier to center it as accurately as possible, if it's a large canvas use two people if possible to assist.

Press the board down carefully onto the canvas within the guide markers.



Use your pool noodle to roll out any air bubbles and creases from the canvas. Use plenty of pressure and roll it from the center of the canvas out to the edges in all directions, like rolling dough for biscuits.

If your canvas is not aligned properly or has creases that wont roll out then using a bit of force you should be able to peel the canvas off the board and re-align the board again. If the alignment is good and its just a crease you can just peel up enough to clear that crease and use the noodle to roll it back down flat.

Now you need to press out the canvas between two flat surfaces (table and board/book larger than the canvas) with some weight added (more books etc) to press it out nice and flat.

IF your canvas HAS DOTS then use some foam underneath your heavy object to press down on the canvas around those dots, something spongy but firm.

Spraying the sides -

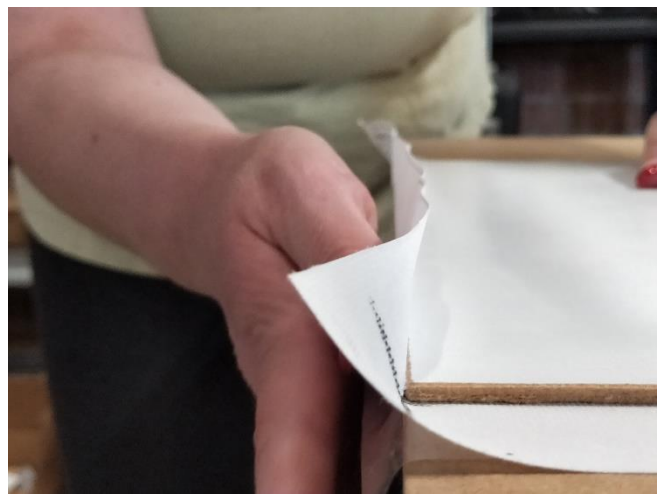
Spray the exposed back of the canvas and spray the same amount of melamine as the amount of canvas you have so they will stick together well. You'll be spraying the white side this time.

Again wait about 5 minutes for the glue to set and go tacky.

Now you can press the first two opposite canvas sides around the board.

NOTE: If this is a canvas without dots, make sure to press the **top and bottom first** and the sides last so that the guide is visible for you to look at. (alternatively take a photo of the guide on your phone to use, so you don't have to flip the board over constantly)

Apply firm pressure along the edge of the board first on the canvas front so that it bends around the edge of the board and sticks there, if it doesn't stick then the glue is not yet set or there is not enough of it. Ensure good pressure to get a good sharp crease around the board.



Now do the same on the back edge to wrap the canvas all the way over and down firmly to the glue.



Cut out the corners -

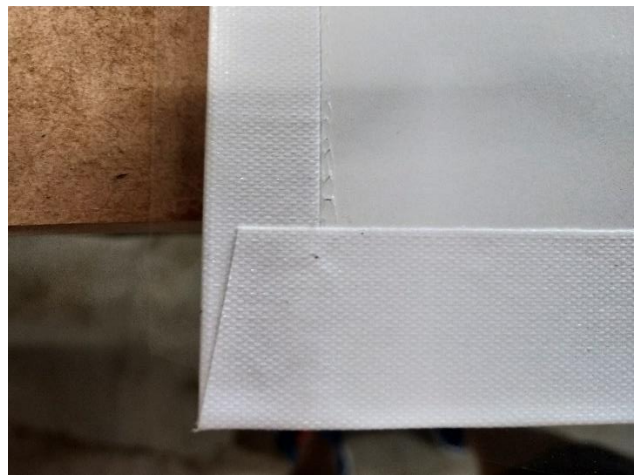
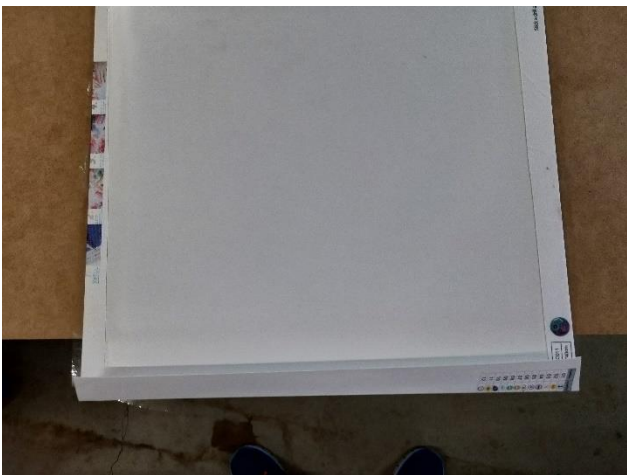
Cut right on the edge of the wood but be careful not to go too deep so that you cut through the other canvas sitting there.



Next cut off the excess corner with a slight angle inward:



Now fold over the last two sides over just like before, good pressure along the edges to get a good crease. Front side over the edge so it's upright, then over the back of the board to sit flat.



Finally:

Clean up the excess glue from the white side of the board by wiping it off with the microfibre cloth. Use plenty of pressure and using clean parts of the cloth as the glue clogs it up until it's all clean.

Press the finished item out for a few hours or overnight to ensure a good flat finish.