

TWELVE

POINT EGMONT MEDIUM



WITH ITALIC AND TRUE SMALL CAPS

SHADOWS WERE CREEPING UPON THE RICH GRAS

SHADOWS WERE CREEPING UPON THE RICH GRASSY GLADES OF THE FOR

Shadows were creeping upon the rich grassy glades of the forest and it was at this late hour that he set out on his quest. So far as he could plan, he would go by way of the winding path, to the far end, down by the dell, and wait until sundown. He was in no very placid state of mind, yet it was his anxiety as well as the fact of his promise to call at Don's, that made him the more determined. Step by step he plodded on until the last rays of the sun were hidden by the density of the trees, and as he made his way he mused over his plans. He would meet the man and conduct him to the hut of the hermit or to that of the lone resident by the river brink. At either of these places they could unravel the details in the midnight silence. No problem would easily baffle the crafty brain of his companion and the procedure they would adopt must in more than one way outwit their rival's claims. With increasing eagerness he quickened his pace and made straight for the place assigned for their meeting. Counting every moment impatiently, half-an-hour had passed before he could dimly see the approaching form of his accomplice, with swift, regular and light-footed steps typical of the virile tem-

SHADOWS WERE CREEPING UPON THE RICH GRAS

SHADOWS WERE CREEPING UPON THE RICH GRASSY GLADES OF THE FOR

Shadows were creeping upon the rich grassy glades of the forest and it was at this late hour that he set out on his quest. So far as he could plan, he would go by way of the winding path, to the far end, down by the dell, and wait until sundown. He was in no very placid state of mind, yet it was his anxiety as well as the fact of his promise to call at Don's, that made him the more determined. Step by step he plodded on until the last rays of the sun were hidden by the density of the trees, and as he made his way he mused over his plans. He would meet the man and conduct him to the hut of the hermit or to that of the lone resident by the river brink. At either of

FACE NO. E1947

5 POINT LEADED

INTERTYPE'S ELEGANT NEW TYPE FACE



EGMONT

MEDIUM with Italic and True Small Caps

FOURTEEN
POINT

Shadows were creeping upon the rich grassy glades of the forest and it was at this late hour that he set out on his quest. So far as he could plan, he would go by way of the winding path, to the far end, down by the dell, and wait until sundown. He was in no very placid state of mind, yet it was his anxiety as well as the fact of his promise to call at Don's, that made him the more determined. Step by step he plodded on until the last rays of the sun were hidden by the density of the trees, and as he made his way he mused over his plans. He would meet the man and conduct him to the hut of the hermit or to that of the lone resident by the river brink. At either of these places they could unravel the details in the midnight silence. No problem

Shadows were creeping upon the rich grassy glades of the forest and it was at this late hour that he set out on his quest. So far as he could plan, he would go by way of the winding path, to the far end, down by the dell, and

Face Number E1025

Intertype Wide Tooth Matrices run on other Line Composing Machines

Double Letter Matrices 4 point leaded

SHADOWS WERE CREEPING UPON THE RICH
SHADOWS WERE CREEPING UPON THE RICH
SHADOWS WERE CREEPING UPON THE RICH GRASSY GLADES OF TH

INTERTYPE'S ELEGANT NEW TYPE FACE



EIGHTEEN POINT Egmont MEDIUM

Shadows were creeping upon the rich grassy glades of the forest and it was at this late hour that he set out on his quest. So far as he could plan, he would go by way of the winding path, to the far end, down by the dell, and wait until sundown. He was in no very placid state of mind, yet it was his anxiety as well as the fact of his promise to call at Don's, that made him the more determined. Step by step he plodded on until the last rays of the sun were hidden by the density of the trees, and as he made his way he mused over his plans.

SHADOWS WERE CREEPING UPON

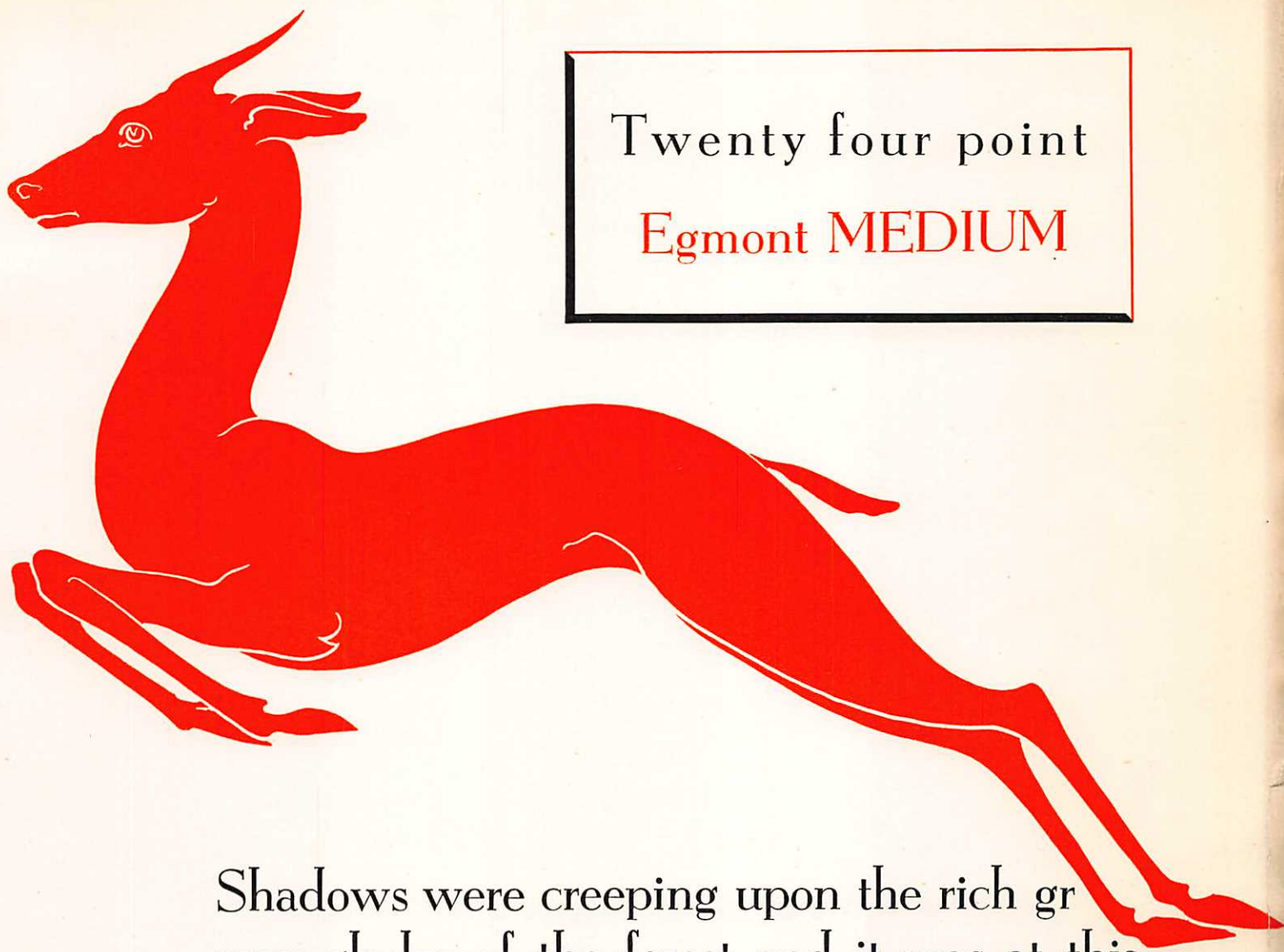
5 point leaded

FACE NO. E4459

SINGLE LETTER MATRICES

FIGURE SIZE .1107

INTERTYPE MODERN WIDE TOOTH MATRICES RUN ON OTHER LINE COMPOSING MACHINES



Twenty four point
Egmont **MEDIUM**

Shadows were creeping upon the rich grassy glades of the forest and it was at this late hour that he set out on his quest. So far as he could plan, he would go by way of the winding path, to the far end, down by the dell, and wait until sundown. He was in no very placid state of mind, yet it was his anxiety as well as the fact of his promise to call at Don's, that made him the more determined.
SHADOWS WERE CREEPING UPO

Face Number E3523

Single Letter Matrices

4 point leaded

INTERTYPE WIDE TOOTH MATRICES RUN ON OTHER LINE COMPOSING MACHINES

INTERTYPE **Egmont Bold**

★ *Intertype wide tooth matrices also run on other line composing machines* ★

Consideration of ease of reading is so essential in the planning of printed matter that every principle helping to achieve comfort in the assimilation of *the message conveyed by words* should always be in the forefront of the typographer's mind. On what does ease of reading depend? On the simpleness of the type design, on the length of the type lines and on their leading, on the spacing of words, and on a principle either misunderstood or sadly ignored: that of appropriate choice of type face for the paper on which it is to be printed. Many type faces appropriate for the moderate copy of advertisements are inappropriate for continuous reading in the book or magazine page; many type faces readable in

EIGHT POINT

Consideration of ease of reading is so essential in the planning of printed matter that every principle helping to achieve comfort in the assimilation of *the message conveyed by words* should always be in the forefront of the typographer's mind. On what does ease of reading depend? On the simpleness of the type design, on the length of the type lines and on their leading, on the spacing of words, and on a principle either misunderstood or sadly ignored: that of appropriate choice of type face for the paper on which it is to be printed. Many type faces appropriate for the moderate copy of advertisements are inappropriate for continuous reading in the book or magazine page; many type faces readable in the larger text sizes lose their

TEN POINT

Consideration of ease of reading is so essential in the planning of printed matter that every principle helping to achieve comfort in the assimilation of *the message conveyed by words* should always be in the forefront of the typographer's mind. On what does ease of reading depend? On the simpleness of the type design, on the length of the type lines and on their leading, on the spacing of words, and on a principle either misunderstood or sadly ignored: that of appropriate choice of type face for the paper on which it is to be printed. Many

TWELVE POINT

Consideration of ease of reading is so essential in the planning of printed matter that every principle helping to achieve comfort in the assimilation of *the message conveyed by words* should always be in the forefront of the typographer's mind. On what does ease of reading depend? On the simpleness of the type design, on the length of the type lines and on their leading, on the spacing of words, and on a principle either misunderstood or sadly ignored: that of appropriate choice of type face for the paper on which it is to be printed. Many type faces appropriate for the moderate copy of advertisements are inappropriate for continuous

FOURTEEN POINT

INTERTYPE EGMONT BOLD WITH ITALIC AND SMALL CAPITALS

When ordering matrices please state the point size and the fount number of the face required and the model of machine on which the matrices are to run

ABCDEFGHIJKLMNOPQRSTUVWXYZ
ABCDEFGHIJKLMNOPQRSTUVWXYZ
abcdefghijklmnopqrstuvwxyz 1234567890
abcdefghijklmnopqrstuvwxyz 1234567890
ABCDEFGHIJKLMNOPQRSTUVWXYZ &£

14 point

ABCDEFGHIJKLMNOPQRSTUVWXYZ
ABCDEFGHIJKLMNOPQRSTUVWXYZ
abcdefghijklmnopqrstuvwxyz 1234567890
abcdefghijklmnopqrstuvwxyz 1234567890
ABCDEFGHIJKLMNOPQRSTUVWXYZ &£

12 point

ABCDEFGHIJKLMNOPQRSTUVWXYZ
ABCDEFGHIJKLMNOPQRSTUVWXYZ
abcdefghijklmnopqrstuvwxyz 1234567890
abcdefghijklmnopqrstuvwxyz 1234567890
ABCDEFGHIJKLMNOPQRSTUVWXYZ &£

10 point

ABCDEFGHIJKLMNOPQRSTUVWXYZ
ABCDEFGHIJKLMNOPQRSTUVWXYZ
abcdefghijklmnopqrstuvwxyz 1234567890
abcdefghijklmnopqrstuvwxyz 1234567890
ABCDEFGHIJKLMNOPQRSTUVWXYZ &£

8 point

- 8 point Face No. E2256 Figure size .0553
Lower case alphabet 101 points Standard alignment
- 10 point Face No. E1824 Figure size .069
Lower case alphabet 126 points Alignment +6
- 12 point Face No. E1961 Figure size .083
Lower case alphabet 145 points Alignment +6
- 14 point Face No. E2286 Figure size .0968
Lower case alphabet 172 points Alignment +5

CHARACTER COUNT TABLE

Bold figures reading down indicate pica measures

Bold figures reading across indicate point sizes

Light figures indicate average number of characters per line

	8	10	12	14
8	25	20	16	14
9	29	23	19	17
10	32	26	22	19
11	36	29	24	21
12	39	32	27	23
13	43	35	29	25
14	46	38	31	27
15	50	40	34	29
16	53	43	36	31
17	57	46	39	33
18	60	49	42	35
19	63	52	44	37
20	66	54	47	39
21	70	57	49	41
22	74	60	51	43
23	77	63	53	45
24	80	66	55	47
25	83	68	58	49
26	87	71	60	51
27	90	74	62	53
28	94	77	64	55
29	97	80	67	57
30	101	82	70	59

ADDITIONAL CHARACTERS IN REGULAR FOUNT

fi fl ff fi ll .-; : ! ? () & £ @ Æ œ Æ Æ
á à ä å é è ë ê ì í î ï ó ò ö ô ú û ü ç ñ
\$ [] ¶ * † ‡ § - / ... ¼ ½ ¾ ⅓ ⅔ ⅕ ⅖ ⅗ ⅘ ⅙ ⅚
fi fl ff fi ll .-; : ! ? () & £ @ Æ œ Æ Æ
á à ä å é è ë ê ì í î ï ó ò ö ô ú û ü ç ñ
\$ [] ¶ * † ‡ § - / ... ¼ ½ ¾ ⅓ ⅔ ⅕ ⅖ ⅗ ⅘ ⅙ ⅚