

# CHELTONIAN BOLD ITALIC

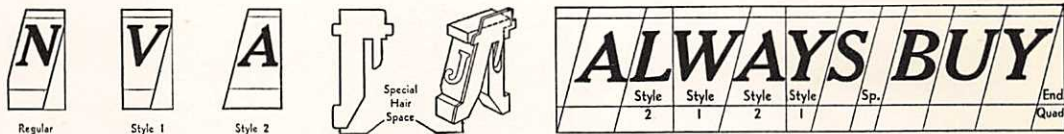
FACE NUMBER E2612

**36**  
POINT

**ABCDEFGHIJKLM**  
**NOPQRSTUVWXYZ**  
**abcdefghijklmnopqrs**  
**tuvwxyz1234567890**  
**?“-.,:;£&!()**

*These special display italic matrices are intended for use with the Intertype  
Composing Stick Attachment*

## ALWAYS BUY



These matrices are made in a special oblique form and may be assembled in the Intertype composing stick in the usual way. In setting the matrices, each line is started with an opening quad and ended with a closing quad. In order to obtain correct spacing between words, special spaces are provided in 6, 8, 10, 12 and 14

point widths. Special hair spaces are also provided for justification. In addition to the regular oblique matrices, Style 1 caps T, V, W and Y, and Style 2 caps A and L, are furnished to permit close fitting of characters. Ordinary spacebands may be used on either or both sides of the line if space permits.

# CHELTONIAN BOLD ITALIC

CAPS · FIGURES AND POINTS ONLY

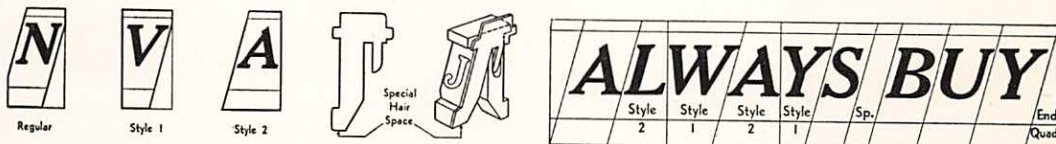
FACE NUMBER E2504

**48**  
POINT

**ABCDEFGHIJK  
LMNOPQRSTU  
VWXYZ123456  
7890£&(!?“'-.,:;**

*These special display italic matrices are intended for use with the Intertype  
Composing Stick Attachment*

## ALWAYS BUY



These matrices are made in a special oblique form and may be assembled in the Intertype composing stick in the usual way. In setting the matrices, each line is started with an opening quad and ended with a closing quad. In order to obtain correct spacing between words, special spaces are provided in 6, 8, 10, 12 and 14

point widths. Special hair spaces are also provided for justification. In addition to the regular oblique matrices, Style 1 caps T, V, W and Y, and Style 2 caps A and L, are furnished to permit close fitting of characters. Ordinary spacebands may be used on either or both sides of the line if space permits.

# INTERTYPE CHELTONIAN EXTRA CONDENSED

CAPS FIGURES AND POINTS · SINGLE LETTER MATRICES

Face No. E1286

**12 POINT**

Figure size .0622

SHADOWS WERE CREEPING UPON THE RICH GRASSY GLADES OF THE FOREST AND IT WAS AT THIS LATE HOUR THAT HE SET OUT ON HIS QUEST. SO FAR AS HE COULD PLAN, HE WOULD GO BY WAY OF THE WINDING PATH, TO THE FAR END, DOWN BY THE DELL, AND WAIT UNTIL SUNDOWN. HE WAS IN NO VERY PLACID STATE OF MIND, YET IT

*8 point leaded*

Face No. E2088

**14 POINT**

Figure size .070

SHADOWS WERE CREEPING UPON THE RICH GRASSY GLADES OF THE FOREST AND IT WAS AT THIS LATE HOUR THAT HE SET OUT ON HIS QUEST. SO FAR AS HE COULD PLAN, HE WOULD GO BY WAY OF THE WINDING PATH, TO THE FAR END, DOWN BY THE DELL, AND WAIT UNTIL SUNDOWN. HE WAS IN NO VERY PLACID

*10 point leaded*

Face No. E4432

**18 POINT**

Figure size .089

SHADOWS WERE CREEPING UPON THE RICH GRASSY GLADES OF THE FOREST AND IT WAS AT THIS LATE HOUR THAT HE SET OUT ON HIS QUEST. SO FAR AS HE COULD PLAN, HE WOULD GO BY WAY OF THE WINDING

*6 point leaded*

INTERTYPE WIDE TOOTH MATRICES WILL RUN ON OTHER LINE COMPOSING MACHINES

INTERTYPE  
CHELTONIAN EXTRA CONDENSED

CAPS FIGURES AND POINTS · SINGLE LETTER MATRICES

Face No. E3516

24 POINT

Figure size .114

SHADOWS WERE CREEPING UPON THE RICH GRASSY  
GLADES OF THE FOREST AND IT WAS AT THIS  
LATE HOUR THAT HE SET OUT ON HIS QUEST.

12 point leaded

Face No. E3477

30 POINT

Figure size .140

SHADOWS WERE CREEPING UPON THE  
RICH GRASSY GLADES OF THE FOREST  
AND IT WAS AT THIS LATE HOUR THAT

6 point leaded

Face No. E2616

36 POINT

Figure size .1798

SHADOWS WERE CREEPING UPON  
THE RICH GRASSY GLADES OF

6 point leaded

INTERTYPE WIDE TOOTH MATRICES WILL RUN ON OTHER LINE COMPOSING MACHINES



## DOUBLE LETTER MATRICES

### 10 Point Cheltonian with Italic and Small Caps.

Intertype E.D. Matrix Face No. E762

The success of Standardization in line composing machines as embodied in the Intertype, is acclaimed by Printers as *the greatest achievement in the mechanical typographical art, and was accomplished through the concentrated efforts of Intertype Engineers and Designers exclusively, and primarily for the purpose of relieving conditions brought about by the complicated mechanical line casting equipment in use in newspaper and job printing offices. Intertype Standardization keeps the Printer's investment always at a minimum. He buys a Standardized BASIC UNIT AND ONLY SUCH STANDARD EQUIPMENT AS*

The success of Standardization in line composing machines as embodied in the Intertype, is acclaimed by Printers as *the greatest achievement in the mechanical typographical art, and was accomplished through the concentrated efforts of Intertype Engineers and Designers exclusively, and primarily for the purpose of relieving conditions brought about by the complicated mechanical line casting equipment in use in newspaper and job printing offices. Intertype Standardization keeps* **A PRINTER'S INVESTMENT ALWAYS AT A MINIMUM.**

*The success of Standardization in line composing machines as embodied in the Intertype, is acclaimed by Printers*  
(Solid)

*The success of Standardization in line composing machines as embodied in the Intertype, is acclaimed by Printers*  
(11 Point Body)

ABCDEFGHIJKLMN OPQRSTUVWXYZ 1234567890  
ABCDEFGHIJKLMN OPQRSTUVWXYZ 1234567890

THE SUCCESS OF STANDARDIZATION IN LINE CASTING COMPOSING MACHINES AS EMBODIED IN THE INTERTYPE, IS NOW ACCLAIMED BY PRINTERS AS ONE

The success of Standardization in line casting composing machines as embodied in the Intertype, is acclaimed by Printers as the greatest achievement in the mechanical typographical art, and was accomplished through the concentrated efforts of Intertype Engineers and Designers exclusively, and primarily for the purpose of relieving conditions brought about by the complicated mechanical line casting equipment in use in newspaper and job printing offices. *Standardization keeps the Printer's investment always at a minimum.* He buys a Standardized basic unit and only such Standard equipment units as his present business demands. He need not tie up good money now in equipment he might not require until later on. Intertype **MAGAZINES, MOULDS, LINERS, ETC., ARE QUITE FREELY INTERCHANGEABLE. EQUIPMENT FITS INSTANTLY ON ALL**

*The success of Standardization in line casting composing machines as embodied in the Intertype, is acclaimed by Printers as the greatest achievement in the mechanical typographical art, and was accomplished through the concentrated efforts of*  
(12 Point Body)

Figure size in thousandths of an inch .077

**Intertype Matrices will run on other Line-composing Machines**