

INTERTYPE

CENTURY BOLD

CAPS 48 FIGS

POINT

AND POINTS

FACE NUMBER E2511 FIGURE SIZE .332

This font is intended for use with the
Intertype Composing Stick Attachment.
Any standard line composing machine
matrices can be so used (as well as
sizes beyond the keyboard range) and
cast on the same Modern Intertype



**ABCDEFGHIJKLMN
OPQRSTUVWXYZ&
12345 “-£!?!()::,, 67890**

Century Expanded

with Italic and Small Capitals

Twelve point
Face Number E888



FAMILIAR CHILDREN'S STORIES

*Set
solid*

Shadows were creeping upon the rich grassy glades of the forest and it was at this late hour that he set out on his quest. So far as he could plan, he would go by way of the winding path, to the far end, down by the dell, and wait until sundown. He was in no very placid state of mind, yet it was his anxiety as well as the fact of his promise to call at Don's, that made him the more determined. Step by step he plodded on until the last rays of the sun were hidden by the density of the trees, and as he made his way he mused over his plans. He would meet the man and conduct him to the hut of the hermit or to that of the lone resident by the river brink. At either of these places they could unravel the details in the midnight silence. No problem would easily baffle the crafty brain of his companion and the procedure they would adopt must in more than one way outwit

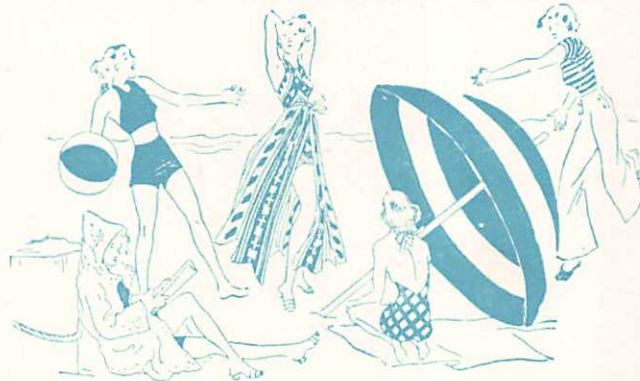
*Cast on
fifteen point
body*

Shadows were creeping upon the rich grassy glades of the forest and it was at this late hour that he set out on his quest. So far as he could plan, he would go by way of the winding path, to the far end, down by the dell, and wait until sundown. He was in no very placid state of mind, yet it was his anxiety as well as the fact of his promise to call at Don's, that made him the more determined. Step by step he plodded on until the last rays of the sun were hidden by the density of the trees, and as he made his way he mused over his plans. He would meet the man and conduct him to the hut of the hermit or to that of the lone resident by the river brink. At either of these places they could unravel the details in the midnight silence. No problem

SHADOWS WERE CREEPING UPON THE RICH GRASSY GLADES OF
SHADOWS WERE CREEPING UPON THE RICH GRAS
SHADOWS WERE CREEPING UPON THE RICH GRAS

Century Expanded with Italic

Fourteen point



Face Number E950

*Set
solid*

Shadows were creeping upon the rich grassy glades of the forest and it was at this late hour that he set out on his quest. So far as he could plan, he would go by way of the winding path, to the far end, down by the dell, and wait until sundown. He was in no very placid state of mind, yet it was his anxiety as well as the fact of his promise to call at Don's, that made him the more determined. Step by step he plodded on until the last rays of the sun were hidden by the density of the trees, and as he made his way he mused over his plans. He would meet the man and conduct him to the hut of the hermit or to that of the lone resident by the river brink. At either of these places they could unravel the details in the midnight silence.

*Three
point
leaded*

Shadows were creeping upon the rich grassy glades of the forest and it was at this late hour that he set out on his quest. So far as he could plan, he would go by way of *the winding path, to the far end, down by the dell, and wait until sundown. He was in no very placid state of mind, yet it was his anxiety as well as the fact of his promise to call at Don's, that made him the more determined.* Step by step he plodded on until the last rays of the sun were hidden by the density of the trees, and as he made his way he mused over his plans. He would meet the man and conduct him to the hut of the hermit or to that of the lone resident by the river brink. At either of these places SHADOWS WERE CREEPING UPON THE RICH G SHADOWS WERE CREEPING UPON THE RICH G



SINGLE LETTER MATRICES

18 Point Century Bold.

Intertype E.D. Matrix Face No. E414

The success of Standardization in line casting composing machines as embodied in the Intertype, is acclaimed by Printers as one of the greatest achievements in the mechanical typographical art, and was accomplished through the concentrated efforts of Intertype Engineers and Designers exclusively, and primarily for the purpose of relieving conditions brought about by the complicated mechanical line casting equipment in use in newspaper and job printing offices. Standardization keeps the Printer's investment always at a minimum. He buys a Standardized basic unit and only such Standard equipment units as his present business demands. He need not tie up good money now in equipment he might not require until later on. Intertype magazines, moulds, liners, etc., are freely interchangeable. Up-keep

**THE SUCCESS OF STANDARDIZATION
IN LINE COMPOSING MACHINES AS
EMBODIED IN THE INTERTYPE, IS
NOW ACCLAIMED BY PRINTERS AS
1234567890**

Figure size in thousandths of an inch .114

Intertype Matrices will run on other Line-composing machines



SINGLE LETTER MATRICES

24 Point Century Bold.

Intertype E.D. Matrix Face No. E435

The success of Standardization in line composing machines as embodied in the Intertype, is now acclaimed by Printers as the greatest achievement in the mechanical typographical art, and was accomplished through concentrated efforts of Intertype Engineers and Designers exclusively, and primarily for the purpose of relieving the conditions brought about by complicated mechanical line casting equipment in use in

**THE SUCCESS OF INTER-
TYPE STANDARDIZATION
IS NOW ACCLAIMED BY
1234567890**

Figure size in thousandths of an inch .166

Intertype Matrices will run on other Line-composing machines

INTERTYPE

SINGLE LETTER MATRICES

30 Point Century Bold.

Intertype E.D. Matrix Face No. E463

The success of Standardization in line composing machines as embodied in the Intertype, is now acclaimed by Printers as the greatest achievement in the mechanical typographical art, and was accomplished by the concentrated efforts of Intertype Engineers and

**THE INTERTYPE IS
NOW ACCLAIMED BY
1234567890**

Figure size in thousandths of an inch .2075

Intertype Matrices will run on other Line-composing Machines



SINGLE LETTER MATRICES

36 Point Century Bold.

Intertype E.D. Matrix Face No. E490

**Success of Standard-
ization in line casting
composing machines
as embodied in the
Intertype, which is
now acclaimed by
Printers as a great
achievement in the**

**THE SUCCESS OF
THE INTERTYPE
IS ACCLAIMED BY
1234567890**

Figure size in thousandths of an inch .249

Intertype Matrices will run on other Line-composing machines