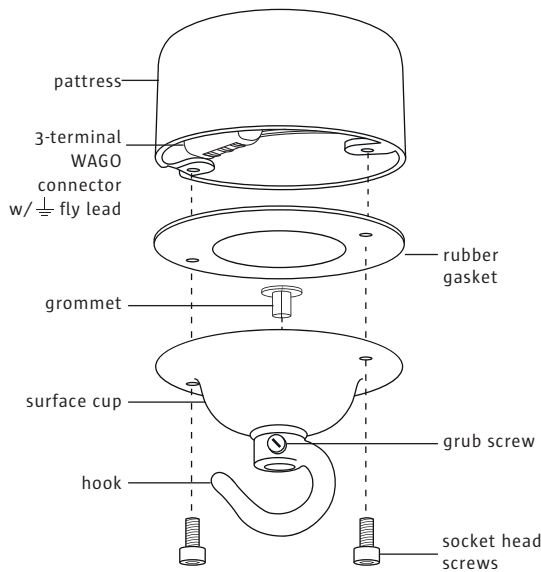
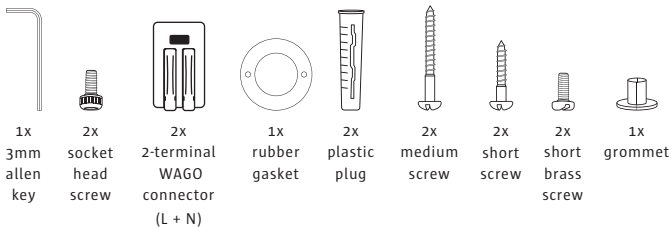


# URBAN COTTAGE INDUSTRIES

## HOOKED PATTRESS TYPE 5



### WHAT'S INCLUDED



### USER INSTRUCTIONS

#### TOOLS REQUIRED

- Drill + 6mm masonry bit
- 6mm + 3mm flat head screwdrivers

#### INSTALLATION NOTES

- Pendant combinations vary. Instructions are for ceiling rose installation only

#### INSTALLATION (MASONRY SURFACE)

**WARNING:** Must be insulated and earthed in accordance with current wiring regs

1. Drill 6mm holes x 30mm deep using mounting holes as a template
2. Insert plastic plugs into holes
3. Use 6mm screwdriver and supplied medium screws to fix pattress to surface (alternatively, use supplied short screws only to fix pattress to a timber surface)
4. Feed cable through hook and secure grub screw with 3mm screwdriver
5. Slide grommet (shoulder last) over cable end and position in internal neck of hook
6. Locate rubber gasket between surface cup and pattress
7. Use supplied WAGO connectors to make L, N and  $\perp$  connections (as per 'wiring diagram'):
  - Flip integrated orange lever up to open position
  - Insert exposed conductor to stopping point
  - Return lever to closed position
8. Secure surface cup to pattress using supplied short brass screws or socket head screws (with supplied allen key)
9. Use chain to connect hooks

### YOUR PRODUCT

Thank you for purchasing this product. It has been designed and made to give you many years of reliable service. Please read these user instructions carefully.

### WARNING

- Installation in accordance with current wiring and building regs and by a competent person only.
- For indoor use only
- Bathroom installation by authorised contractor only
- Shut off power to the circuit before installation
- Grommet enhances insulation and protection
- Ensure grub screw is secure - WAGO terminals must be relieved from strain and twisting
- Always use fixings appropriate for the mounting surface (screws supplied may not be suitable)
- 10kg max weight load from hook
- Ensure luminaire cord is min 0.75mm<sup>2</sup> CSA and double insulated
- Adhere to 'looping in wiring diagram' where applicable

### TROUBLESHOOTING

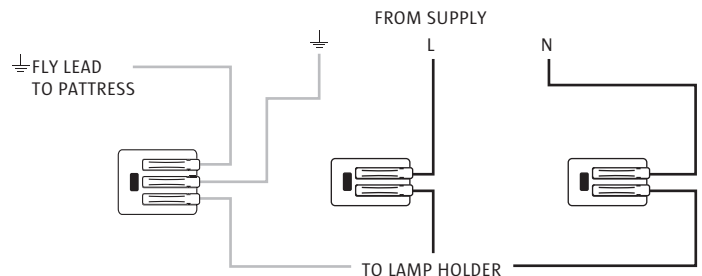
No user serviceable parts. In the event of failure, fault or damage shut off power and contact [hello@urbancottageindustries.com](mailto:hello@urbancottageindustries.com)

### STAY UP TO DATE

We post regular design and product information via social media. You can also contact us via instant support and email [hello@urbancottageindustries.com](mailto:hello@urbancottageindustries.com)

### WIRING DIAGRAM

**WARNING:** Ensure no loose copper strands



### HANDLING & CLEANING

**WARNING:** Shut off power and allow to cool

- Wipe gently with a dry, soft, cotton cloth
- Cleaning products, scratching, abrasion, damp, oils, liquids etc may have a detrimental effect