



HME - Heavy Metals Detection Analysis

Analyzed 15 Sep, 2022 | Instrument ICP-MS | Method TM-105

| Analyte | LOD (ppb) | LOQ (ppb) | Result ug/g | Flag | Limit ug/g |
|--------------|-----------|-----------|-------------|------|------------|
| Arsenic (As) | 0.005 | 0.015 | 0 | | |
| Cadmium (Cd) | 0.005 | 0.016 | 0 | | |
| Mercury (Hg) | 0.004 | 0.013 | 0 | | |
| Lead (Pb) | 0.075 | 0.224 | 0 | | |

MIB - Microbial Testing Analysis

Analyzed 16 Sep, 2022 | Instrument PCR/ Plating (not A2LA accredited) | Method TM-109

| Analyte | Limit (CFU/g) | Result CFU/g | Flag |
|--|---------------|--------------|------|
| Salmonella SPP | | NEG | |
| Total Yeast & Mold | | <10 | |
| Aspergillus fumigatus | | NEG | |
| Aspergillus flavus | | NEG | |
| Aspergillus niger | | NEG | |
| Aspergillus terreus | | NEG | |
| Shiga toxin-producing Escherichia Coli | | NEG | |

MTO - Mycotoxin Testing Analysis

Analyzed 30 Aug, 2022 | Instrument Subcontracted | Method Subcontracted

| Analyte | LOD (ppb) | LOQ (ppb) | Result ug/kg (ppb) | Flag | Limit ug/kg |
|------------------|-----------|-----------|--------------------|------|-------------|
| Mycotoxin B1 | 0.000 | 0.010 | N D | | |
| Mycotoxin B2 | 0.010 | 0.030 | N D | | |
| Mycotoxin G1 | 0.010 | 0.020 | N D | | |
| Mycotoxin G2 | 0.010 | 0.040 | N D | | |
| Ochratoxin A | 0.020 | 0.060 | N D | | |
| Total Mycotoxins | | | N D | | |

PES - Pesticides Screening Analysis

Analyzed 30 Aug, 2022 | Instrument Subcontracted | Method Subcontracted

NR Not Reportable
 ND Not Detected
 N/A Not Applicable
 NT Not Tested
 LOD Limit of Detection
 LOQ Limit of Quantification
 <LOQ Detected
 >ULOL Above upper limit of linearity
 CFU/g Colony Forming Units per 1 gram
 TNTC Too Numerous to Count



Scan the QR code to verify authenticity.

Authorized Signature

Dr. Archana R. Parameswar,
 Laboratory Director
 19 Sep, 2022 09:42:28 AM



| Analytes | LOD (ppb) | LOQ (ppb) | Result ug/g | Flag | Limit ug/g |
|---------------------|-----------|-----------|-------------|------|------------|
| Abamectin | 0.110 | 0.330 | N D | | |
| Acephate | 0.230 | 0.700 | N D | | |
| Acequinocyl | 0.110 | 0.320 | N D | | |
| Acetamiprid | 0.020 | 0.050 | N D | | |
| Aldicarb | 0.020 | 0.050 | N D | | |
| Azoxystrobin | 0.020 | 0.060 | N D | | |
| Bifenazate | 0.010 | 0.030 | N D | | |
| Bifenthrin | 0.020 | 0.060 | N D | | |
| Boscalid | 0.060 | 0.170 | N D | | |
| Carbaryl | 0.010 | 0.040 | N D | | |
| Carbofuran | 0.010 | 0.020 | N D | | |
| Chlorantraniliprole | 0.010 | 0.030 | N D | | |
| Chlorpyrifos | 0.010 | 0.030 | N D | | |
| Clofentezine | 0.010 | 0.040 | N D | | |
| Coumaphos | 0.040 | 0.120 | N D | | |
| Cyfluthrin | 2.320 | 7.020 | N D | | |
| Cypermethrin | 0.370 | 1.130 | N D | | |
| Daminozide | 0.550 | 1.650 | N D | | |
| Dichlorvos | 0.050 | 0.140 | N D | | |
| Dimethoate | 0.010 | 0.020 | N D | | |
| Dimethomorph | 0.010 | 0.030 | N D | | |
| Ethoprophos | 0.020 | 0.050 | N D | | |
| Etofenprox | 0.010 | 0.040 | N D | | |
| Etoxazole | 0.010 | 0.020 | N D | | |
| Fenhexamid | 0.040 | 0.140 | N D | | |
| Fenoxycarb | 0.020 | 0.060 | N D | | |
| Fenpyroximate | 0.010 | 0.040 | N D | | |
| Fipronil | 0.010 | 0.040 | N D | | |
| Fludioxinil | 0.020 | 0.050 | N D | | |
| Flonicamide | 0.010 | 0.030 | N D | | |
| Hexythiazox | 0.010 | 0.020 | N D | | |
| Imazalil | 0.060 | 0.170 | N D | | |
| Imidacloprid | 0.040 | 0.110 | N D | | |
| Kresoxim-methyl | 0.020 | 0.050 | N D | | |
| Malathion | 0.010 | 0.030 | N D | | |
| Metalaxyl | 0.010 | 0.020 | N D | | |
| Methiocarb | 0.010 | 0.030 | N D | | |
| Methomyl | 0.020 | 0.050 | N D | | |
| Mevinphos | 0.060 | 0.180 | N D | | |
| Myclobutanil | 1.190 | 3.610 | N D | | |
| Naled | 0.030 | 0.080 | N D | | |
| Oxamyl | 0.020 | 0.050 | N D | | |
| Paclobutrazole | 0.020 | 0.060 | N D | | |
| Permethrin | 0.080 | 0.260 | N D | | |
| Phosmet | 0.010 | 0.030 | N D | | |
| Piperonyl butoxide | 0.010 | 0.040 | N D | | |
| Prallethrin | 0.100 | 0.300 | N D | | |

NR Not Reportable
 ND Not Detected
 N/A Not Applicable
 NT Not Tested
 LOD Limit of Detection
 LOQ Limit of Quantification
 <LOQ Detected
 >ULOL Above upper limit of linearity
 CFU/g Colony Forming Units per 1 gram
 TNTC Too Numerous to Count



Scan the QR code to verify authenticity.

Authorized Signature

Dr. Archana R. Parameswar,
 Laboratory Director
 19 Sep, 2022 09:42:28 AM



| Analytes | LOD (ppb) | LOQ (ppb) | Result ug/g | Flag | Limit ug/g |
|-------------------------|-----------|-----------|-------------|------|------------|
| Propiconazole | 0.070 | 0.220 | N D | | |
| Propoxur | 0.010 | 0.030 | N D | | |
| Pyrethrin-I | 0.020 | 0.060 | N D | | |
| Pyridaben | 0.010 | 0.020 | N D | | |
| Spinetoram | 0.230 | 0.690 | N D | | |
| Spinosyn A | 0.010 | 0.020 | N D | | |
| Spinosyn D | 0.000 | 0.010 | N D | | |
| Spiromesifen | 0.050 | 0.140 | N D | | |
| Spirotetramat | 0.010 | 0.030 | N D | | |
| Spiroxamine | 0.010 | 0.030 | N D | | |
| Tebuconazole | 0.010 | 0.030 | N D | | |
| Thiachloprid | 0.010 | 0.030 | N D | | |
| Thiamethoxam | 0.010 | 0.040 | N D | | |
| Methyl parathion | 0.050 | 0.140 | N D | | |
| Diazinon | 0.010 | 0.040 | N D | | |
| Trifloxystrobin | 0.010 | 0.030 | N D | | |
| Chlordane | 0.740 | 2.250 | N D | | |
| Chlorfenapyr | 0.830 | 2.530 | N D | | |
| Pentachloronitrobenzene | 0.060 | 0.170 | N D | | |

NR Not Reportable
 ND Not Detected
 N/A Not Applicable
 NT Not Tested
 LOD Limit of Detection
 LOQ Limit of Quantification
 <LOQ Detected
 >ULOL Above upper limit of linearity
 CFU/g Colony Forming Units per 1 gram
 TNTC Too Numerous to Count



Scan the QR code to verify authenticity.

Authorized Signature

Dr. Archana R. Parameswar,
 Laboratory Director
 19 Sep, 2022 09:42:28 AM



RES – Residual Solvent Analysis

Analyzed 25 Aug, 2022 | Instrument HS-GC/MS | Method TM-106
 Analysis Comment: Ethylbenzene & Isobutane are not A2LA accredited.

| Analyte | LOD (ppm) | LOQ (ppm) | Result (ppm) | Flag | Limit ug/g |
|--------------------|-----------|-----------|--------------|------|------------|
| Propane | 0.470 | 1.410 | N D | | |
| Butane | 0.200 | 0.610 | N D | | |
| Methanol | 0.070 | 0.230 | N D | | |
| Pentane | 0.130 | 0.410 | N D | | |
| Ethanol | 0.130 | 0.380 | N D | | |
| Ethyl ether | 0.020 | 0.070 | N D | | |
| Acetone | 0.060 | 0.180 | N D | | |
| Isopropyl alcohol | 0.030 | 0.090 | N D | | |
| Acetonitrile | 0.020 | 0.060 | N D | | |
| Methylene chloride | 0.010 | 0.020 | N D | | |
| Hexane | 0.030 | 0.080 | N D | | |
| Ethyl acetate | 0.030 | 0.080 | N D | | |
| Chloroform | 0.010 | 0.030 | N D | | |
| Benzene | 0.010 | 0.030 | N D | | |
| 1,2-Dichloroethane | 0.010 | 0.030 | N D | | |
| Heptane | 0.020 | 0.060 | N D | | |
| Trichloroethene | 0.010 | 0.030 | N D | | |
| Toluene | 0.010 | 0.020 | N D | | |
| Isobutane | 3.900 | 11.820 | N D | | |
| Ethyl benzene | 1.700 | 5.160 | N D | | |
| m,p-Xylenes | 0.010 | 0.030 | N D | | |
| o-Xylene | 0.010 | 0.020 | N D | | |

NR Not Reportable
 ND Not Detected
 N/A Not Applicable
 NT Not Tested
 LOD Limit of Detection
 LOQ Limit of Quantification
 <LOQ Detected
 >ULOL Above upper limit of linearity
 CFU/g Colony Forming Units per 1 gram
 TNTC Too Numerous to Count



Scan the QR code to verify authenticity.

Authorized Signature

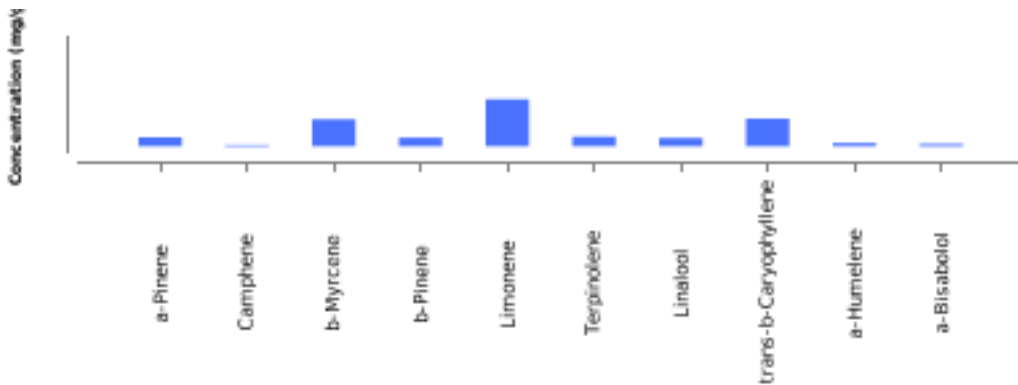
Dr. Archana R. Parameswar,
 Laboratory Director
 19 Sep, 2022 09:42:28 AM



TER- Terpenes Analysis

Analyzed 29 Aug, 2022 | Instrument HS-GC/MS | Method TM-102

| Analyte | LOD (ppm) | LOQ (ppm) | Result % | Result mg/g |
|------------------------------------|-----------|-----------|-------------|--------------|
| a-Pinene | 0.840 | 2.540 | 0.08 | 0.77 |
| Camphene | 0.940 | 2.850 | 0.01 | 0.11 |
| b-Myrcene | 1.080 | 3.260 | 0.23 | 2.31 |
| b-Pinene | 1.110 | 3.380 | 0.07 | 0.72 |
| 3-Carene | 0.460 | 1.400 | N D | N D |
| a-Terpinene | 1.180 | 3.570 | N D | N D |
| a-ocimene | 0.240 | 0.710 | N D | N D |
| Limonene | 0.730 | 2.210 | 0.4 | 4.01 |
| p-cymene | 0.680 | 2.070 | N D | N D |
| cis-b-Ocimene | 0.680 | 2.050 | N D | N D |
| Eucalyptol | 1.500 | 4.530 | N D | N D |
| γ-Terpinene | 0.570 | 1.720 | N D | N D |
| Terpinolene | 0.970 | 2.950 | 0.08 | 0.81 |
| Linalool | 1.830 | 5.550 | 0.07 | 0.7 |
| Isopulegol | 1.650 | 4.990 | N D | N D |
| Geraniol | 0.780 | 2.370 | N D | N D |
| trans-b-Caryophyllene | 0.910 | 2.760 | 0.23 | 2.35 |
| α-Humulene | 0.960 | 2.920 | 0.03 | 0.28 |
| cis-Nerolidol | 0.510 | 1.540 | N D | N D |
| trans-Nerolidol | 1.110 | 3.360 | N D | N D |
| Guaiol | 2.800 | 8.490 | N D | N D |
| Caryophyllene Oxide | 0.970 | 2.950 | N D | N D |
| α-Bisabolol | 2.500 | 7.560 | 0.02 | 0.19 |
| Total Terpene Concentration | | | 1.22 | 12.25 |



NR Not Reportable
 ND Not Detected
 N/A Not Applicable
 NT Not Tested
 LOD Limit of Detection
 LOQ Limit of Quantification
 <LOQ Detected
 >ULOL Above upper limit of linearity
 CFU/g Colony Forming Units per 1 gram
 TNTC Too Numerous to Count



Scan the QR code to verify authenticity.

Authorized Signature

Dr. Archana R. Parameswar,
 Laboratory Director
 19 Sep, 2022 09:42:28 AM