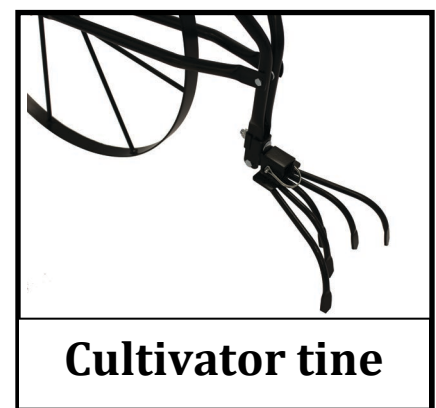


Owner's Manual

MHWP-24WHA



High Wheel Walk Behind Plow & Cultivator

Table of Contents

1	INTRODUCTION	3
1.1	... <i>Navigating This Manual</i>	3
1.2	... <i>Warnings and Safety Precautions</i>	3
1.3	... <i>Owner Assistance</i>	3
1.4	... <i>Further Assistance</i>	4
2	SAFETY	4
2.1	... <i>General Safety Rules</i>	4
3	UNPACKING AND ASSEMBLY OF PLOW	5
3.1	... <i>Assembly</i>	5
3.2	... <i>Final Set-up</i>	10
4	PARTS BREAKDOWN	10
4.1	... <i>Parts List</i>	11
5	WARRANTY & PRODUCT REGISTRATION.....	12
5.1	... <i>Warranty/Product Registration</i>	12

WARNING

READ ENTIRE MANUAL BEFORE ATTEMPTING TO USE THIS WALK BEHIND PLOW

If incorrectly used, this machine can cause severe injury. Those who use this walk behind plow should read the entire manual before attempting to set up, operate or adjust this plow.

Read and keep this manual for future reference. This manual contains important information on SAFETY, ASSEMBLY & OPERATION. This information includes the SET UP MANUAL, REPLACEMENT PARTS and the WARRANTIES.

1 INTRODUCTION

Maxim's Walk Behind High Wheel Plow features a long wooden handle, making it an easy to manually guide one of three easy to change garden tools through tilled soil. Switch out the garden tools and use the cultivator tool for weeding, single plow for planning or the hilling plow to help close soil around seeds or add soil around the root base of plants. That's just a few of the benefits of this walk behind high wheel plow and we're certain you'll find that it's easy to use and will help you to accurately weed and plant. It's this simple, yet sturdy design that makes Maxim Walk Behind Plow a low maintenance and easy to use tool.

Please read this entire manual before assembly and use. The manufacturer reserves the right to change, alter or improve the product and this document at any time without prior notice.

1.1 Navigating This Manual

1. Use this manual to help familiarize yourself with safety, assembly, operation, adjustments, and warranty information. It is very important that you read this manual and follow the instructions to ensure safe operation of the plow.
2. Please visit www.maximmfg.com for updated information.

1.2 Warnings and Safety Precautions

The safety of our customers and other's well-being is very important to us. Accurate assembly and safe use of the plow is the owner's responsibility.

- Carefully follow all assembly instructions



1.3 Owner Assistance

Please complete the Warranty/Product Registration at the time of purchase. You will need to complete the warranty/product registration form with your new unit, or you may visit our website www.maximmfg.com and complete our online product registration form. We require this information so we can keep you updated with any important information about your plow and provide you with the best customer service possible.

The parts and components used on your Maxim plow have been specifically engineered for Maxim and should only be replaced with Maxim parts. Contact your local Maxim Dealer for OEM replacement parts or contact our customer service department for assistance in parts, locating your local servicing dealer and more.



1.4 Further Assistance

Your dealer and all of us at Maxim want you to be pleased with your plow. Should you require further assistance or have questions regarding your plow, please contact your local dealer where you purchased your plow. If you are unable to satisfy your needs by your local dealer, please contact us at:

Maxim

20195 South Diamond Lake Road, STE 100

Rogers, MN 55374

800-621-2789

Email: sales@maximmfg.com

Website: www.maximmfg.com

Live Chat: Visit our website Monday – Friday, From 8 A.M. – 5 P.M. CST

2 SAFETY

2.1 General Safety Rules

- Use this equipment for its intended purpose only.
- Familiarize yourself with this plow and its attachments.
- Do not put hands or feet near or under plow or attachments.
- Do not allow children to operate this plow.
- Do not pull or tow this plow
- Wear appropriate clothing such as sturdy, rough-soled shoes (steel toe recommended) and close fitting pants and shirt. Never wear sandals, sneakers or open shoes, and never operate the plow with bare feet.
- Operate only in daylight.
- Do not operate the plow when fatigued or under the influence of alcohol, drugs or other medication which can cause drowsiness or affect your ability to operate machine safely.
- Regularly inspect the plow. Make sure parts are not bent, damaged or loose.
- Keep all nuts and bolts tight.

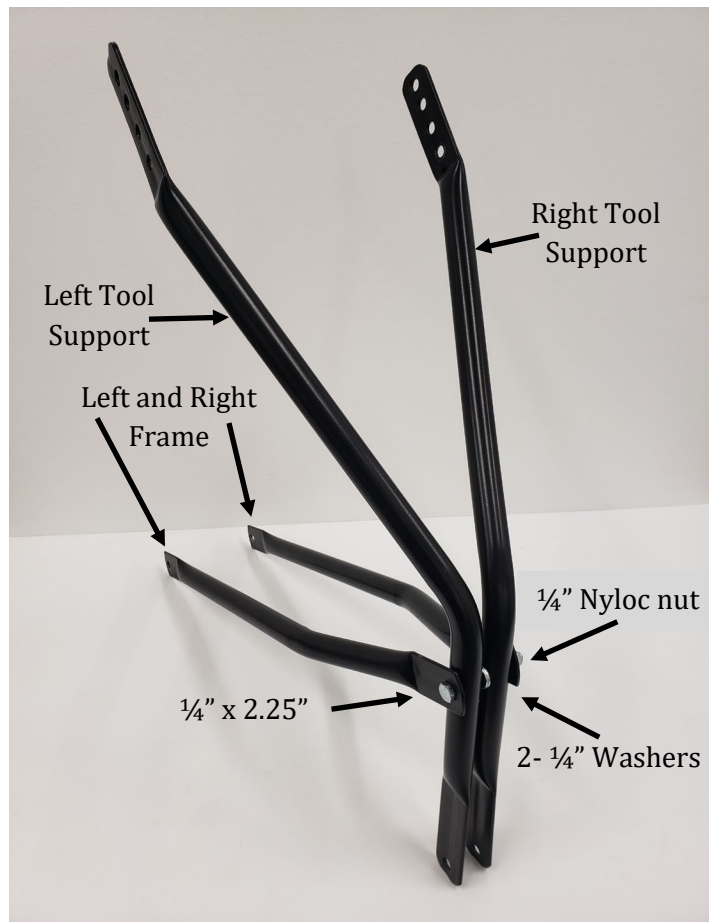
3 UNPACKING AND ASSEMBLY OF PLOW

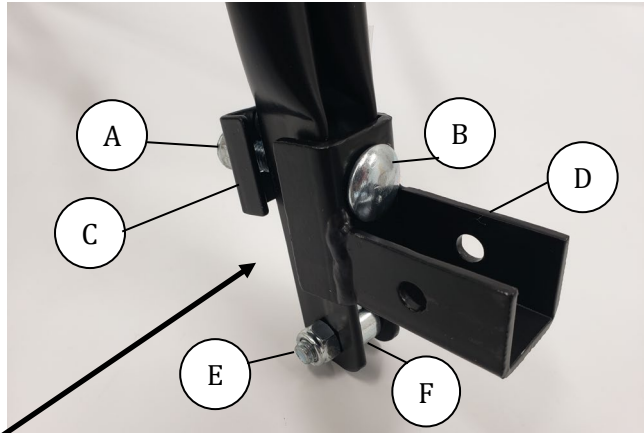
Prior to opening your unit, ensure that you have a clear work area. Carefully open box and remove contents. Then carefully set all parts to the side and follow set up and assemble instructions found in this manual.

3.1 Assembly

Follow these steps when assembling your Maxim Plow:

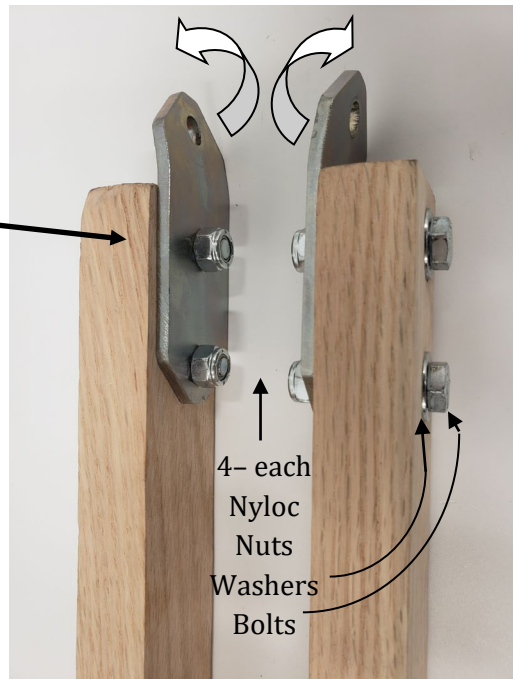
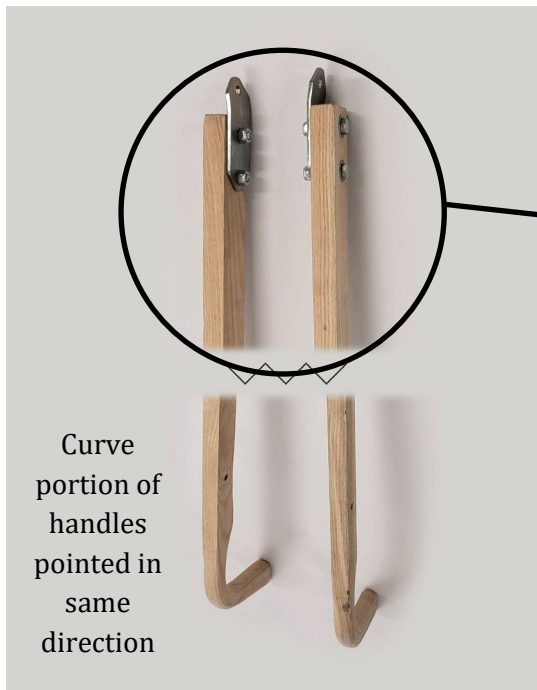
1. Locate the Left tool support ref # 6 and Right tool support ref # 7
2. Using ref # 13- $\frac{1}{4}$ " x 2.25" bolt connect the Left frame ref # 14 and Right frame ref # 15 together with the tool support arms as shown below, using 2 ref #25- $\frac{1}{4}$ " washers as spacers, then thread on ref# 24 - $\frac{1}{4}$ " Nyloc nut tighten only at a snug fit. Do not tighten nut at this time.



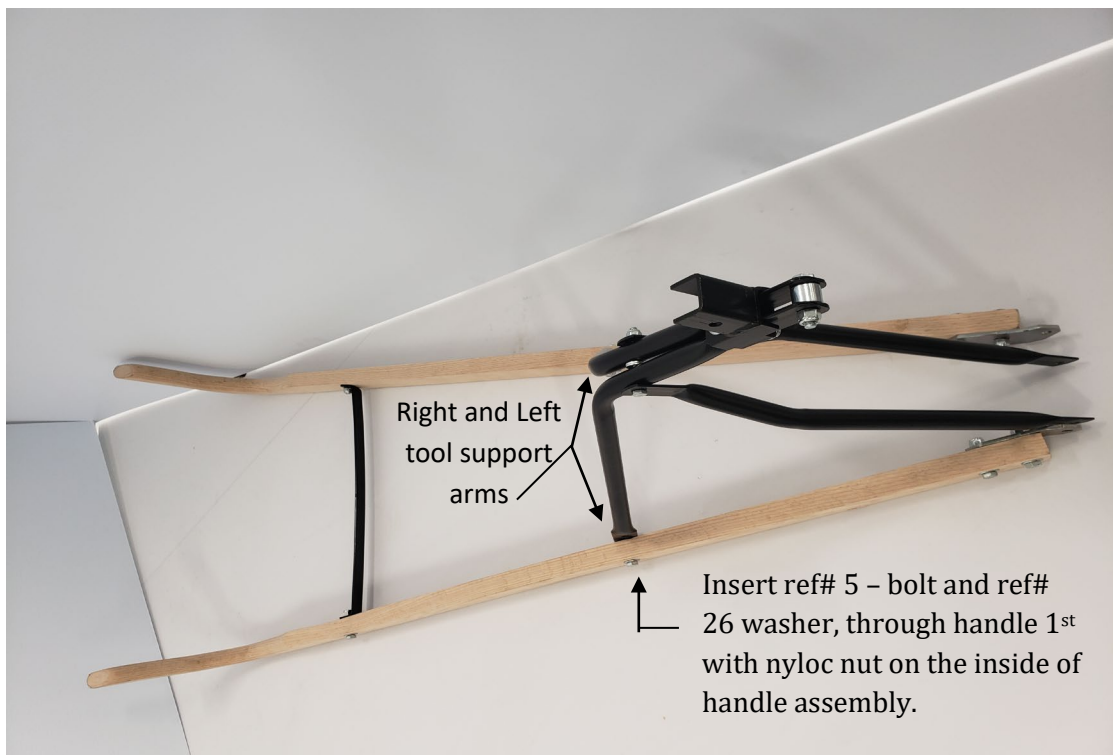
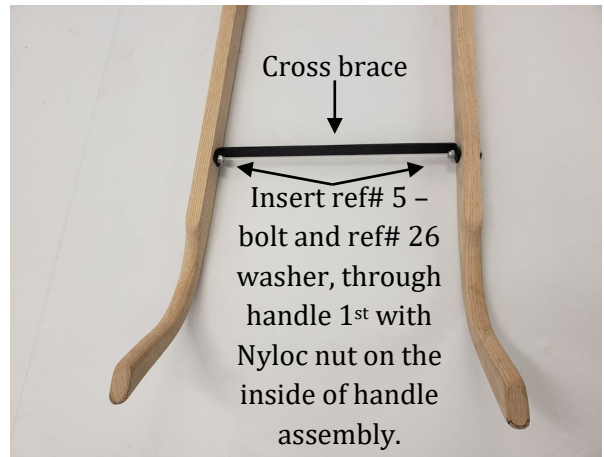


A	3/8-16 Nyloc nut
B	3/8-16 x 2 Carriage Bolt
C	Fix Plate
D	Tool Union
E	5/16-18 x 1.25 Bolt & Nyloc Nut
F	Tool Support Spacer

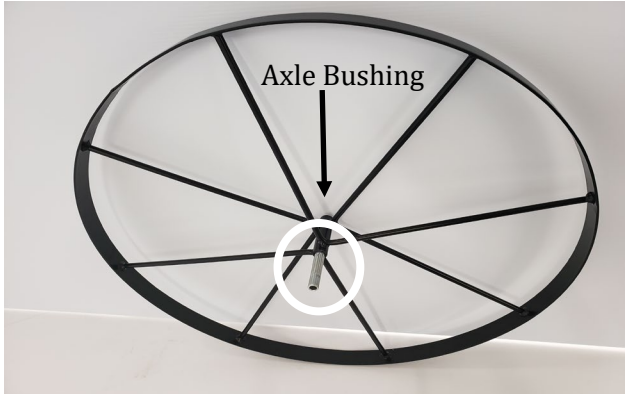
3. Insert ref# 16 (E) - 5/16" x 1.25" bolt through both tool support arms with ref # 17 (E) spacer in the middle, thread on ref # 8 (E) - 5/16" Nyloc nut tighten only as a snug fit.
4. Insert ref# 9 (B) 3/8" x 2" carriage bolt through square hole of ref# 10 (D) Tool union and through both Tool Supports and through ref# 11 (C) Fix plate using ref# 12 (A) 3/8" Nyloc nut and tighten.



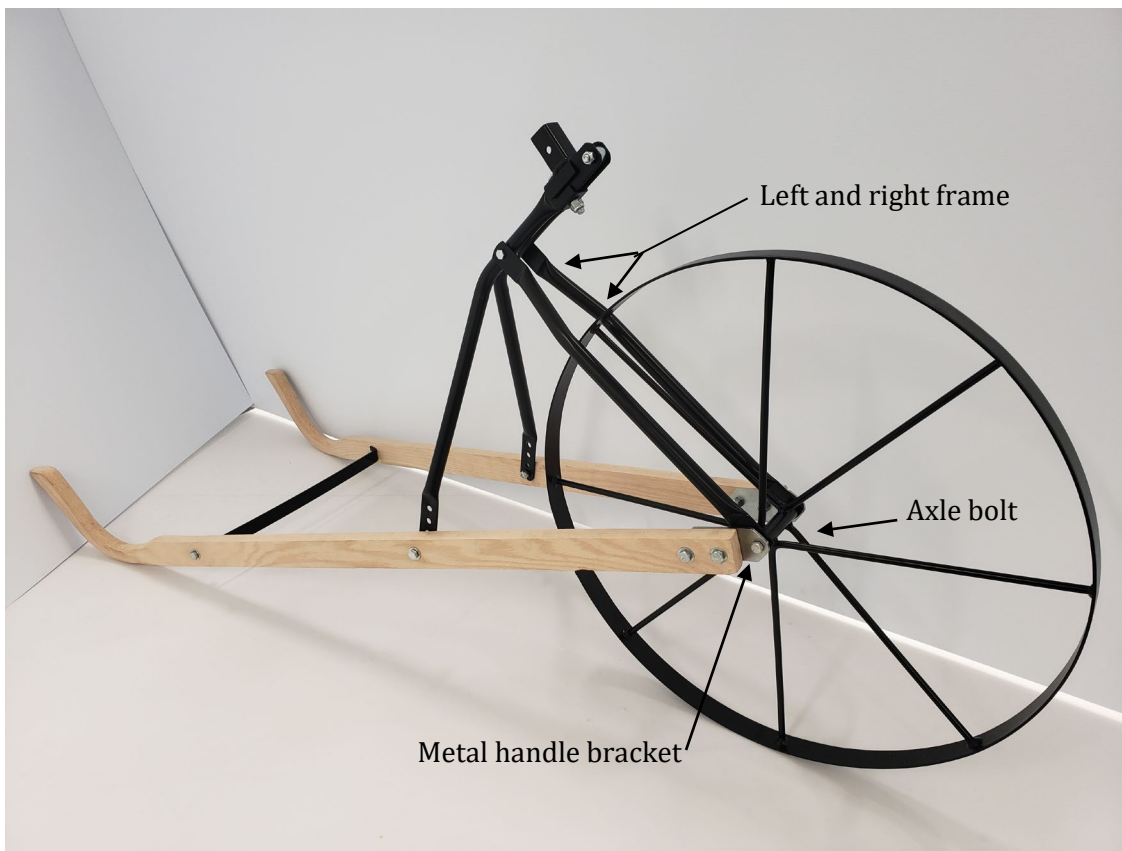
5. With the wooden handles both pointing in the same direction, mount on the inside ref# 18 - Handle metal axle bracket to each handle using (2) ref# 5 - 5/16" x 1.5" bolt, ref# 26 5/16" washer and ref# 8 - 5/16" Nyloc nuts on the inside as shown above, and tighten. Make sure the Handle metal axle brackets both left and right bends are mounted as illustrated above.
6. With the Wooden handles pointing up, mount Ref# 2 - Cross Brace, using ref# 5 - 5/16" x 1.5" bolt with ref# 26 - 5/16" flat washer through wooden handle 1st and ref# 8 - 5/16" Nyloc nut on the inside with Cross brace.
7. With handle still laying curved side up, insert ref# 5 - 5/16 x 1.5 bolt and ref# 26 - 5/16 flat washer through each of the tool support arms and the wooden handle using the same hole location for each side. Tighten only at a snug fit using ref# 8 - 5/16" Nyloc nut on the inside of handle assembly. This is only temporary, final mounting and adjustment based on user, will be made later.



- Slide axle bushing ref# 20 into wheel ref# 21 as shown below.



- Lift handle and frame assembly to mount wheel.
- Align Axle bushing, Left/Right frame and Handle metal axle bracket of each side and insert ref# 19 – 5/16" x 4.5" Axle bolt, using ref# 8 – 5/16" Nyloc nut as shown below, and tighten.



11. Leave in this position and tighten all hardware except the handle tool support arms as mentioned in step# 7
12. Using ref# 3 – “D” pin, temporarily mount ref#4 Cultivator tine set as shown with tines up. This “D” pin will be used for all Plow Attachments.



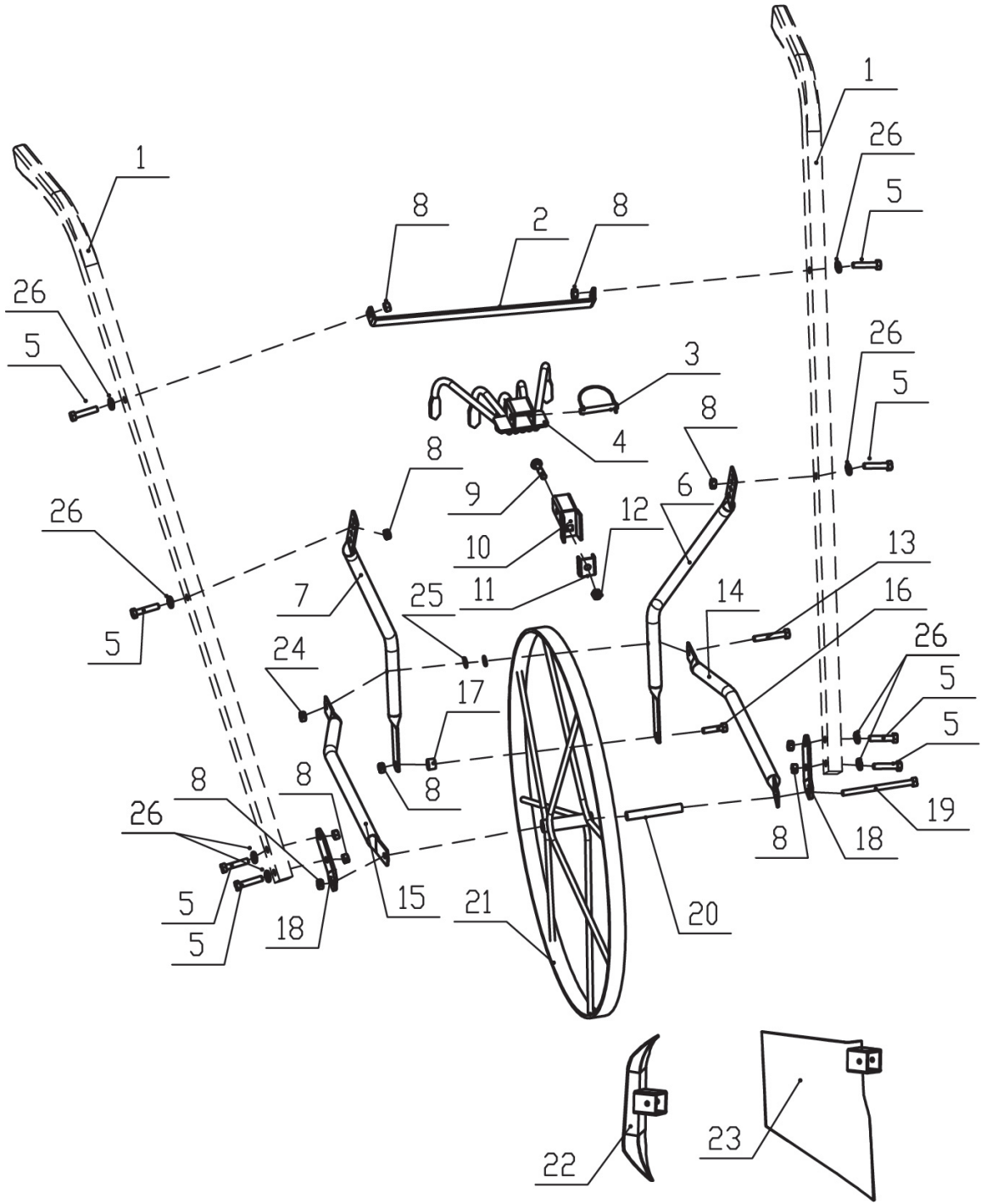
13. Your Maxim High Wheel Plow is now ready to tip right side up.
14. Adjust right and left tool supports to adjust handle to a comfortable and safe operator height and begin to use.



3.2 Final Set-up

1. Apply a small amount of dry silicone spray to axle bolt

4 PARTS BREAKDOWN



4.1 Parts List

Ref #	Qty	Part #	Description
1	2	20003	Wood handle
2	1	30001	Cross brace
3	1	30002	"D" pin
4	1	40001	Cultivator tine
5	8	30003	5/16-18x1.5 Bolt
6	1	30004	Left Tool support
7	1	30005	Right Tool support
8	10	30006	5/16 Nyloc nut
9	1	30007	3/8-16x2 Carriage Bolt
10	1	40002	Tool Union
11	1	40003	Fix plate
12	1	30008	3/8-16 Nyloc nut
13	1	30009	1/4-20x2.25 Bolt
14	1	30010	Left frame
15	1	30011	Right frame
16	1	30012	5/16-18x1.25 Bolt
17	1	30015	Tool support spacer
18	2	30016	Handle metal axle bracket
19	1	30017	5/16-18x4.5 Bolt
20	1	30018	Axle bushing
21	1	40004	Wheel
22	1	40005	Furrow plow
23	1	40006	Hilling
24	1	30019	1/4-20 Nyloc nut
25	2	30020	1/4 Flat Washer
26	8	30021	5/16 Flat Washer



5 WARRANTY & PRODUCT REGISTRATION

5.1 Warranty/Product Registration

Please register your product immediately after purchase. You can do that by visiting our website at www.maximmfg.com and complete our online product registration.

Or, complete the following warranty/production registration form on the next page and return to:

Maxim
 Attn: Warranty Registration Department
 20195 South Diamond Lake Road, STE 100
 Rogers, MN 55374



Product Registration Form

YOUR INFORMATION

Full Name:

Last First M.I.

Address:

Street Address Apartment/Unit #

City State ZIP Code

Home Phone:

Alternate Phone: _____

Email

PURCHASED FROM

Company:

Address:

Street Address Apartment/Unit #

City State ZIP Code

MODEL INFORMATION

Purchase Date

Application Type

Homeowner Commercial Rental

Model (i.e. RMT55H)

Serial # (i.e. RMT55HA01234567)

Signature

**Register your product online at www.maximmfg.com
Or, Fax completed form to: 763-428-4821**



PAGE INTENTIONALLY LEFT BLANK



20195 South Diamond Lake Road, Suite 100 • Rogers, MN 55374
 Toll-Free: 800-621-2789 • Website: maximmfg.com • Email: sales@maximmfg.com

Dear Valued Customer:

The Maxim Product you just purchased is built with the finest material and craftsmanship. Use this product properly and enjoy the benefits from its high performance. By purchasing a Maxim Product, you show a desire for quality and durability. Neglect and improper handling may impair its performance and is not covered by this limited warranty.

Thoroughly read the instructions and understand the operation before using your product. Always contact Maxim Product Support at 1-800-621-2789 prior to having any service or warranty work performed, as some services performed by parties other than Maxim approved service centers may void this warranty. This limited warranty is in lieu of any other warranty expressed or implied, written or oral and Maxim assumes no other responsibility or liability outside that expressed within this limited warranty. Warranty claims must be submitted within 30 days from date of repair.

**Limited Warranty for Maxim Product:
HWP-24WH**

	Consumer Warranty Period	Commercial Warranty Period
Complete Unit	2 years from date of purchase by user	2 years from date of purchase by user
Specific Limitations	Maxim warrants the components of this product; it does not cover any labor charges associated with repair or expense for examination or adjustment of unit.	

“**Consumer use**” means personal residential household use by a consumer. “**Commercial use**” means all other uses, including, but not limited to, use for commercial, income producing or rental purposes or when purchased by a business.

This limited warranty applies to the original purchaser of the equipment (verification of purchase, in the form of a receipt, is the responsibility of the buyer), is non-transferable. Parts/components will be replaced or repaired at no charge, except when the equipment has failed due to lack of proper maintenance or misuse. If a part is no longer available, the part may be replaced with a similar part of equal function. Any misuse, abuse, alteration or improper installation or operations will void warranty. Determining whether a part is to be replaced or repaired is the sole decision of Maxim. Maxim will not provide for replacement of complete products due to defective parts. Any costs incurred due to replacement or repair of items outside of a Maxim approved facility is the responsibility of the buyer and not covered under warranty. Transportation costs to and from service center are the responsibility of the customer.

This limited warranty specifically excludes the following; failure of parts due to damage caused by accident, fire, flood, windstorm, acts of God, applications not approved by Maxim in writing, corrosion caused by chemicals, use of replacement parts which do not conform to manufacturer’s specifications, damage related to rodent and/or insect infestation and damage caused by vandalism. Additional exclusions: loss of running time, inconvenience, loss of income, or loss of use, including any implied warranty of merchantability of fitness for a specific use.

This limited warranty does not cover any personal injury or damage to surrounding property caused by failure of any part, misuse or inability to use the product. Alteration of the product, including safety features, shall void this limited warranty.



HWP-24WH



Maxim

20195 S. Diamond Lake Rd, STE 100

Rogers, MN 5537

800-621-2789