

5 INCH CHIPPER SHREDDER

PARTS MANUAL

SC5540

540 PTO (Gravity Feed)

P/N: 78586-00

Revision: 20230601

Serial Range: M02066 - Current

Companion to P/N: 78585-00



BEARCATPRODUCTS.COM// **888.625.4520**

ENGLISH



WARNING: Cancer and Reproductive Harm
www.P65Warnings.ca.gov

Before You Begin

FOR MACHINE SERVICE OR PARTS

For service assistance, contact your nearest authorized Crary Bear Cat dealer or the factory. For parts, contact your authorized dealer. The parts manual for your machine is available at bearcatproducts.com/Product-Support/Find-A-Product-Manual. Your dealer will need to know the serial number of your machine to provide the most efficient service. See below for information on how to identify and record the serial number for your machine.

FOR ENGINE SERVICE OR PARTS

For engine service or parts, contact your nearest authorized engine dealer. Crary Bear Cat does not handle any parts, repairs or warranties for engines.

ORDERING PARTS

Only genuine Crary Bear Cat replacement parts should be used to repair the machine. Replacement parts manufactured by others could present safety hazards, even though they may fit on this machine. Replacement parts are available from your Crary Bear Cat dealer.

Provide the following when ordering parts:

- The SERIAL NUMBER of your machine.
- The PART NUMBER of the part.
- The PART DESCRIPTION.
- The QUANTITY needed.

IDENTIFICATION NUMBER LOCATION

Your machine will have a vehicle identification number (VIN). VINs are located on the left side of the trailer frame near the hitch. They are 17-digit numbers of the format: 5VJAA001XXWXXXXXX. For the exact location of the VIN, see the parts manual available at bearcatproducts.com/Product-Support/Find-A-Product-Manual.

Record your identification number in the space provided.

SERIAL NUMBER

MANUFACTURED BY CRARY INDUSTRIES
WEST FARGO, NORTH DAKOTA 58078 U.S.A.
SERIAL NUMBER
MANUFACTURED IN U.S.A.

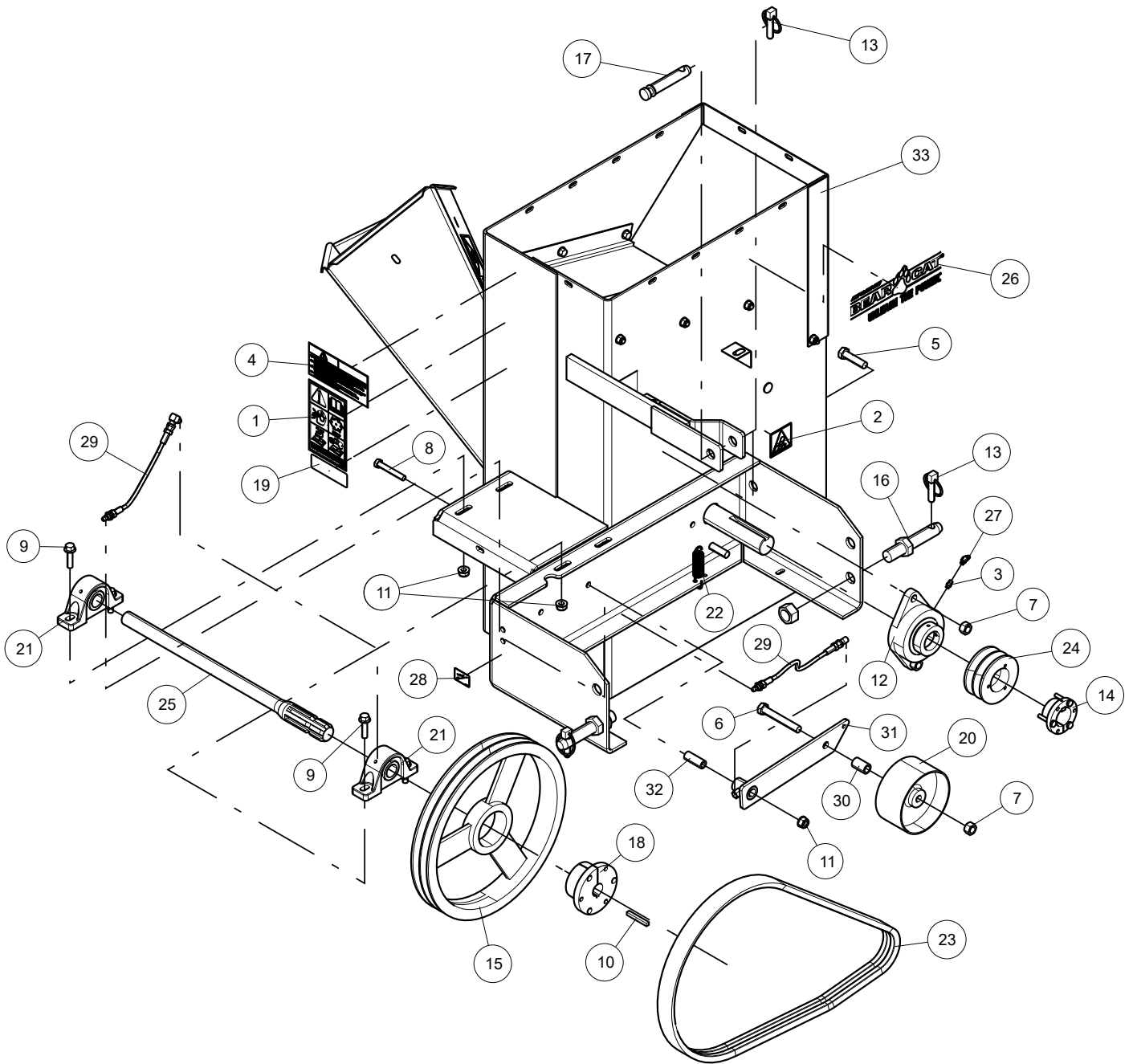
HOW TO CONTACT Crary Bear Cat

ADDRESS	PHONE	E-MAIL	HOURS
237 NW 12th Street P.O. Box 849 West Fargo, ND 58078	888-625-4520 701-282-5520 Fax: 701-282-9522	sales@bearcatproducts.com service@bearcatproducts.com	Monday - Friday 8 a.m. to 5 p.m. Central Time

TABLE OF CONTENTS

HOUSING (Drawing #1)	1
HOUSING (Drawing #2)	3
DRIVELINE	5
SHIELDS	6
ROTOR ASSEMBLY	7
ATTACHMENTS	9
SPECIFICATIONS	11
BOLT TORQUE	12
SERVICE PARTS & ACCESSORIES	13

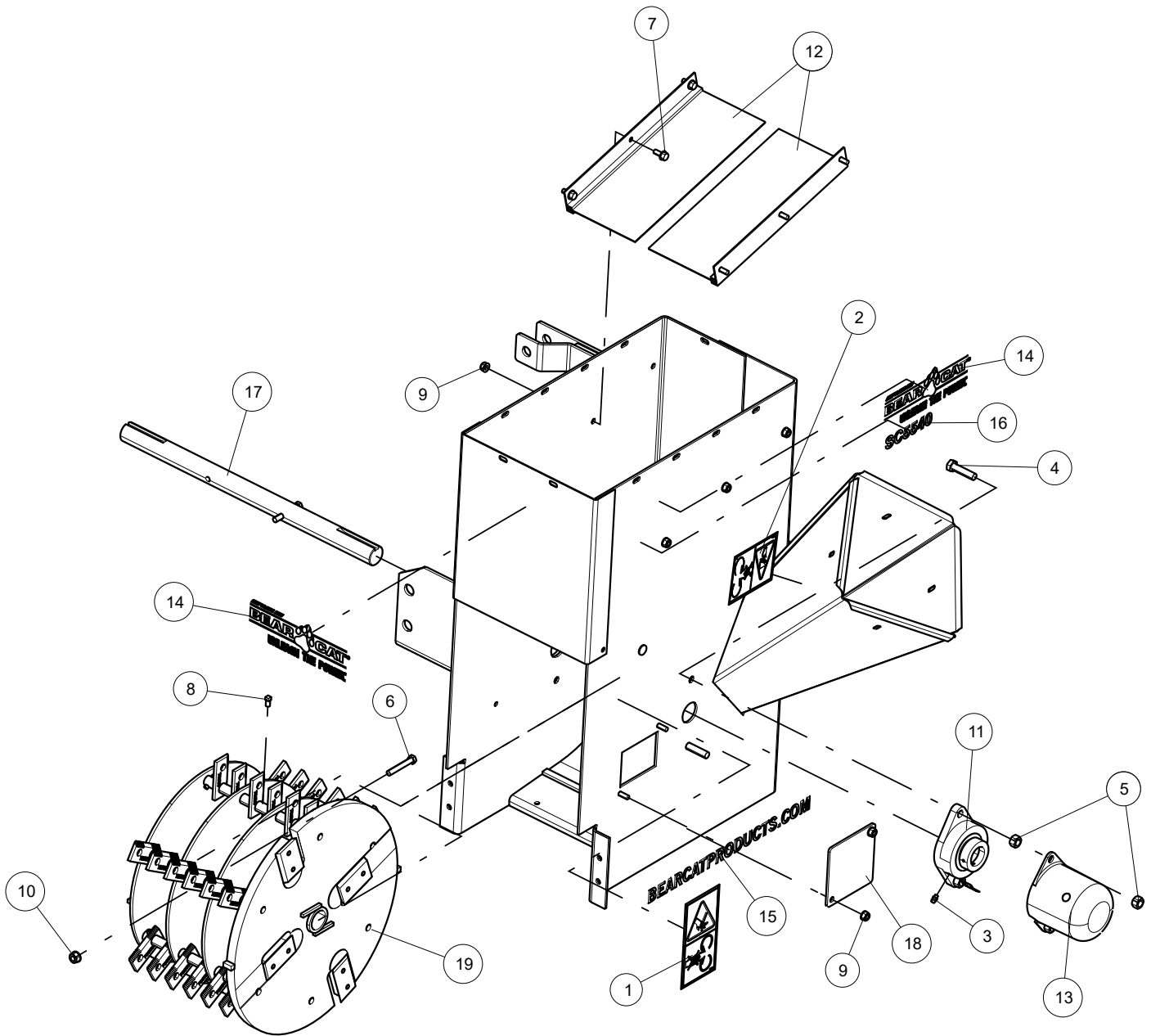
HOUSING (Drawing #1)



HOUSING (DRAWING #1)

ITEM	PART NUMBER	DESCRIPTION
1	12172	DECAL, OPERATING INSTRUCTIONS ISO
2	12174	DECAL, SHIELD DANGER ISO
3	12275	FITTING, 1/4 SELF-TAP GREASE
4	14942-00	DECAL, MANUAL INFORMATION
5	15015	BOLT, 1/2 x 2 GR5 HEX CAPSCREW ZP
6	15016	BOLT, 1/2 x 3-1/2" GR5 HEX HD ZP
7	15049	NUT, 1/2" CENTERLOCK GRB ZP
8	15116	BOLT, 3/8 x 2-1/2 GR5 HHCS ZP
9	15360-00	BOLT, 3/8-16 x 1-1/2, HEX, FLANGE, GR5, CMS F1 5ANS
10	15391	KEY, 1/4" SQ x 2" PLAIN
11	15905-00	NUT, 3/8-16 NYLOCK FLANGE
12	16004	BEARING, 2 BOLT FLANGE x 1-1/2 BORE
13	16015	PIN, 7/16 x 1-3/4 LYNCH
14	16016	BUSHING, SH 1-1/2"
15	16017	SHEAVE, 2B13.6 SK
16	16019	PIN, LIFT ARM 7/8 x 5" LG
17	16020	PIN, TOP LINK 3/4 x 4-1/2" LG
18	16083	BUSHING, 1" BORE SK
19	16155	DECAL, SERIAL NUMBER
20	16230	PULLEY, 5.0 X 2.5 IN. IDLER
21	17667	PILLOW BLOCK BEARING 1 IN.
22	17692	SPRING, BLOWER DRIVE
23	32883-00	BELT, 2RBX56
24	32908-00	SHEAVE, 2B3.4 SH
25	33571-00	SHAFT, 6 SPLINE 5" CHIPPER/SHREDDER
26	34990-00	DECAL, CBC LOGO BLACK TAGLINE 3.11 x 9.42
27	35374-00	ZERK, 45 DEG, 1/4-28 SAE-LT MALE, 13/16 OVERALL LG
28	35481-00	DECAL, GREASE GUN ICON
29	35540-00	HOSE, 10" GREASE
30	70369	SPACER, .75 x 1.18
31	70691	WELDMENT, PTO IDLER ARM
32	70694	SPACER, .63 x 1.63
33	78588-00	ASSEMBLY, SC5540 BODY W/ DECALS (Includes Items 1, 2, 4, 26, 28)

HOUSING (Drawing #2)

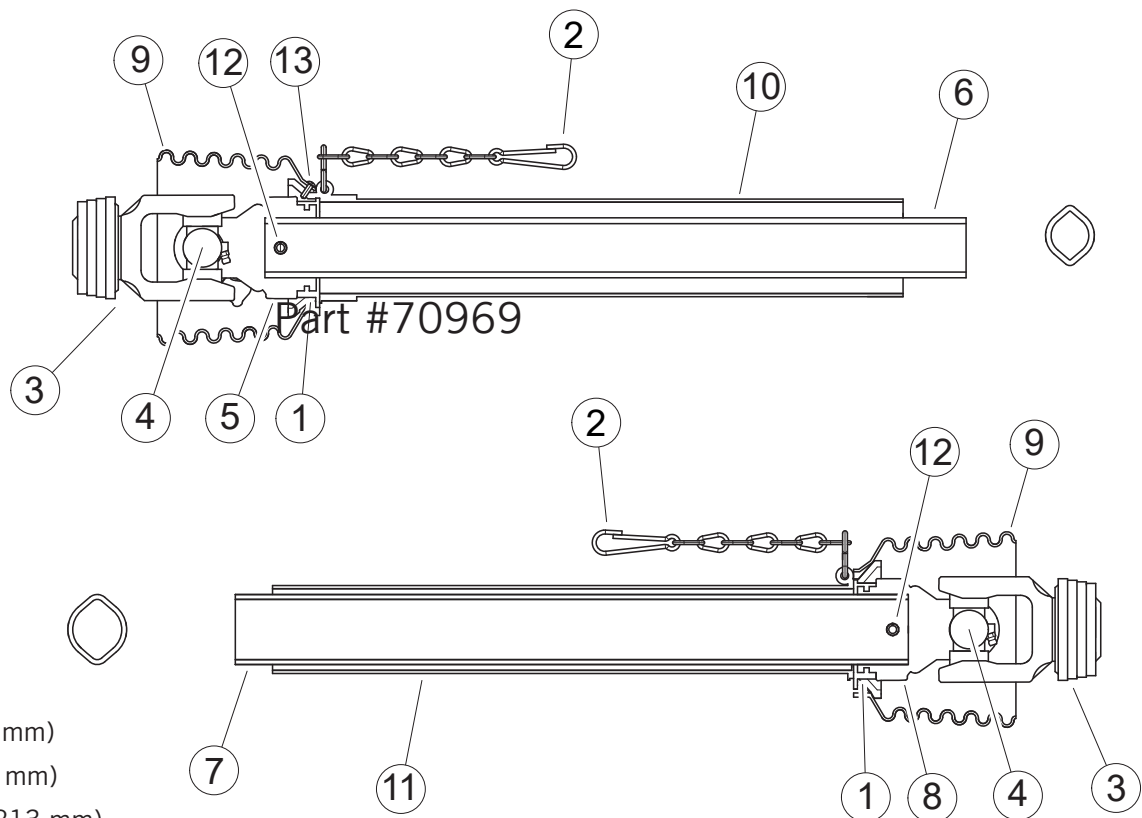


HOUSING (DRAWING #2)

ITEM	PART NUMBER	DESCRIPTION
1	12169	DECAL, KNIFE ACCESS ISO
2	12175	DECAL, BLADE DANGER ISO
3	12275	FITTING, 1/4 SELF-TAP GREASE
4	15015	BOLT, 1/2 x 2 GR5 HEX CAPSCREW ZP
5	15049	NUT, 1/2" CENTERLOCK GRB ZP
6	15116	BOLT, 3/8 x 2-1/2 GR5 HHCS ZP
7	15117-00	BOLT, 5/16 x 3/4 FLANGE NC
8	15453	SET SCREW, 5/16-18 x 1/2" SQ HD CUP
9	15904-00	NUT, 5/16-18 NYLOCK-FLANGE
10	15905-00	NUT, 3/8-16 NYLOCK FLANGE
11	16004	BEARING, 2 BOLT FLANGE x 1-1/2 BORE
12	16068	BRUSH, INLET
13	16460	CAP, LARGE SHAFT
14	34990-00	DECAL, CBC LOGO BLACK TAGLINE 3.11 x 9.42
15	35221-00	DECAL, CBC WEB ADDRESS BLACK 1.13 x 17.81
16	36027-00	DECAL, MODEL SC5540
17	70379	SHAFT, LARGE C/S ROTOR
18	70396-40	COVER, BLADE ACCESS
19	70969	ASSEMBLY, COMM ROTOR W/ RECT KNIVES (see ROTOR ASSEMBLY for part numbers)

DRIVELINE

Part #31110-00



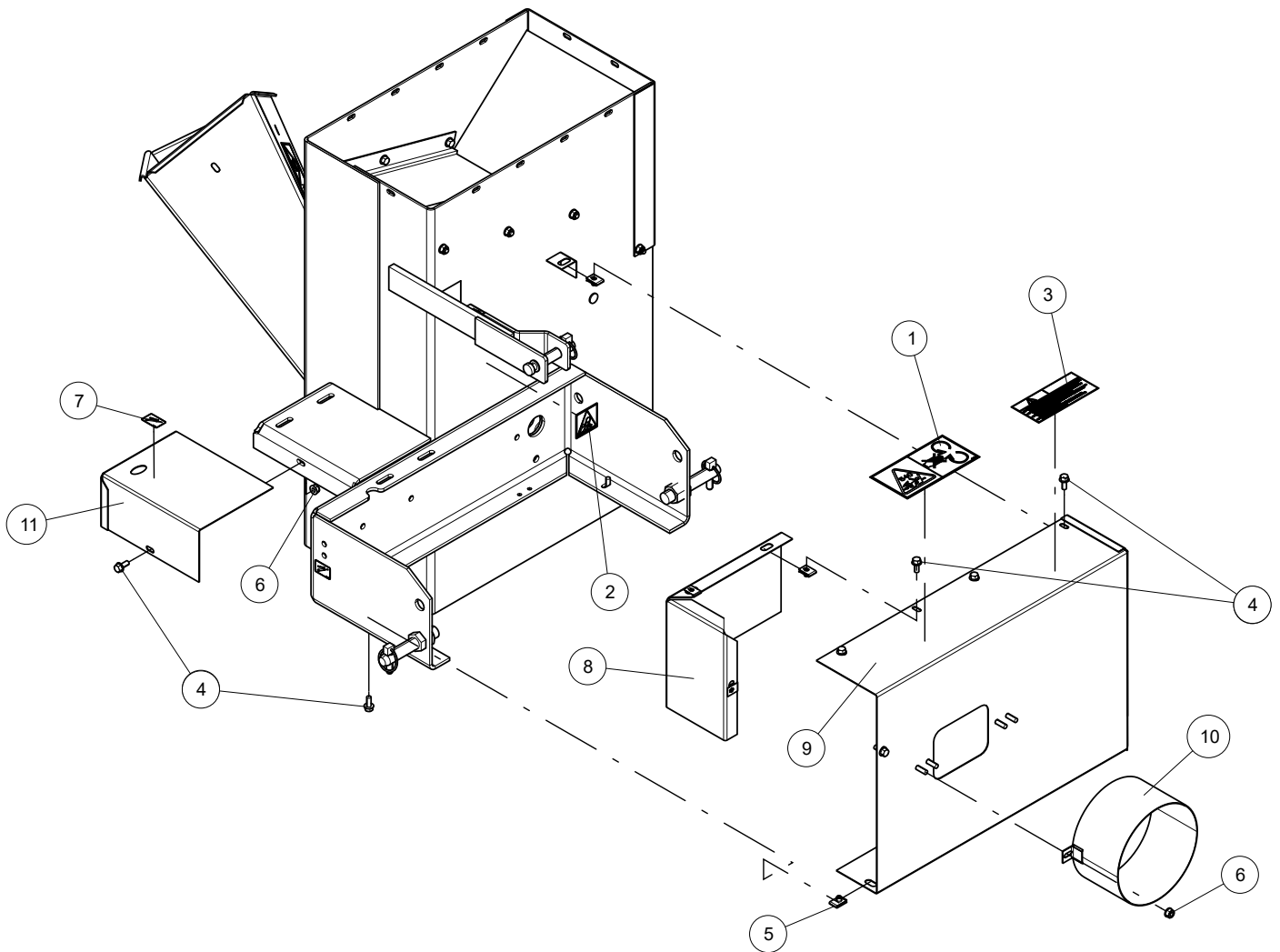
MIN: 22.05" (560 mm)

MAX: 30.39" (772 mm)

OVERLAP: 8.39" (213 mm)

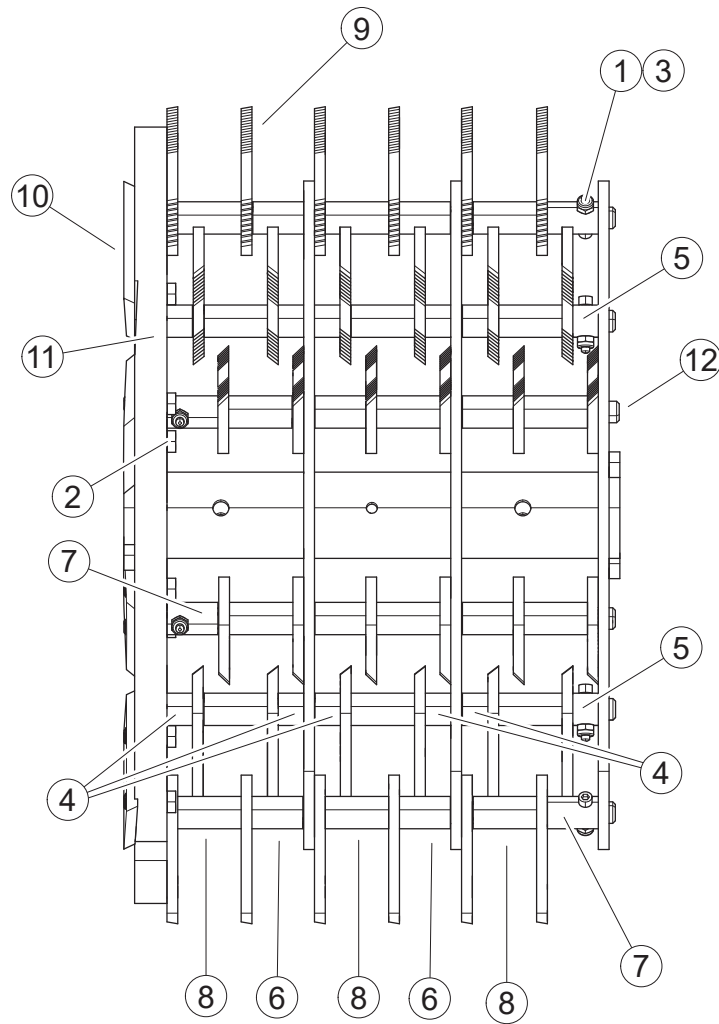
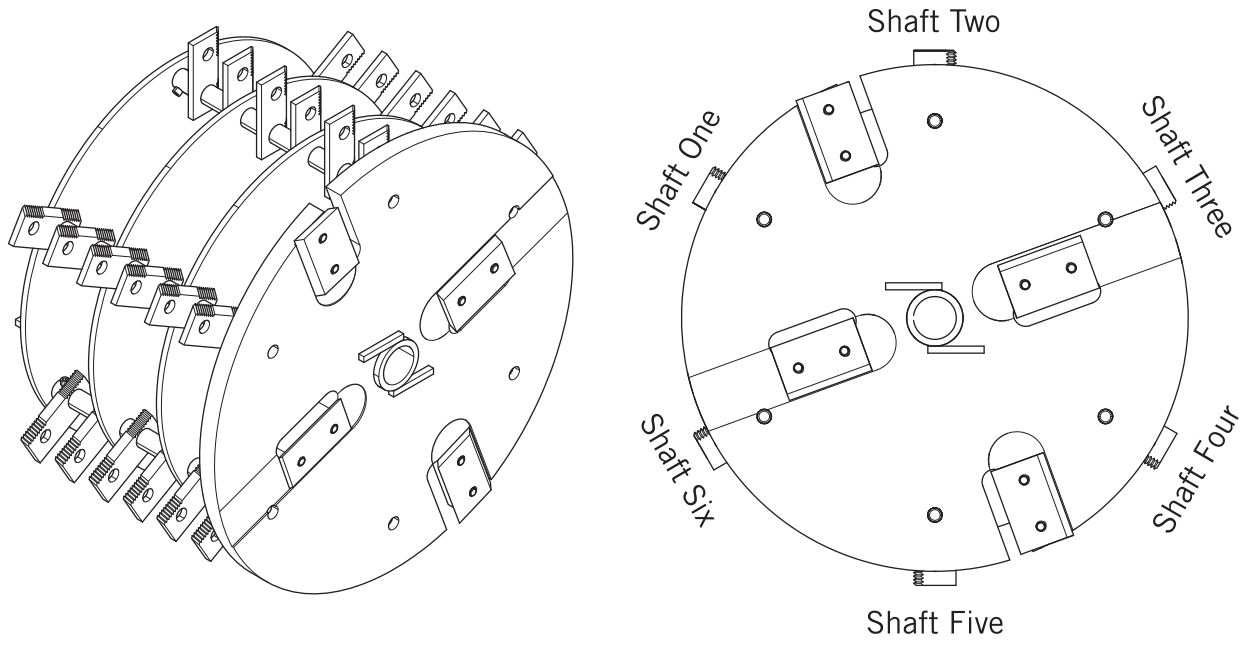
ITEM	PART NUMBER	DESCRIPTION
1	12208	RING, SC15 BEARING
2	12209	CHAIN, SAFETY
3	12225	YOKE, 1-3/8-6 SPLINGE ASGE
4	12226	KIT, CROSS & BEARING
5	12227	YOKE, INBOARD 0V
6	12228	PROFILE, INNER 0V
7	12229	PROFILE, OUTER 1
8	12230	YOKE, INBOARD 1
9	12232	CONE, 4 RIB
10	12233	GUARD, TUBE OUTER
11	12234	GUARD, TUBE INNER
12	15573	PIN, 10 x 65 SPRING
13	15574	SCREW, WS365344
-	12210	DECAL, OUT (not shown)
-	12211	DECAL, IN (not shown)
-	32248-00	COLLAR, REINFORCING (not shown)
-	32250-00	DECAL, CE MARK (not shown)
-	32251-00	DECAL, EUROPEAN (not shown)

SHIELDS



ITEM	PART NUMBER	DESCRIPTION
1	12168	DECAL, PTO DANGER ISO
2	12174	DECAL, SHIELD DANGER ISO
3	14942-00	DECAL, MULTILINGUAL MANUAL
4	15117-00	BOLT, 5/16 x 3/4 FLANGE NC
5	15402	NUT 5/16"-18 TINNEMAN U-TYPE
6	15904-00	NUT, 5/16-18 NYLOCK-FLANGE
7	35481-00	DECAL, GREASE GUN ICON
8	70433-10	GUARD, PTO END
9	70461	BELT GUARD WITH DECAL 540 (includes Items 1 & 3)
10	71798-10	WELDMENT, PTO SHIELD
11	79215-00	ASSEMBLY, JACKSHAFT SHIELD W/ DECAL (Includes Item 7)

ROTOR ASSEMBLY



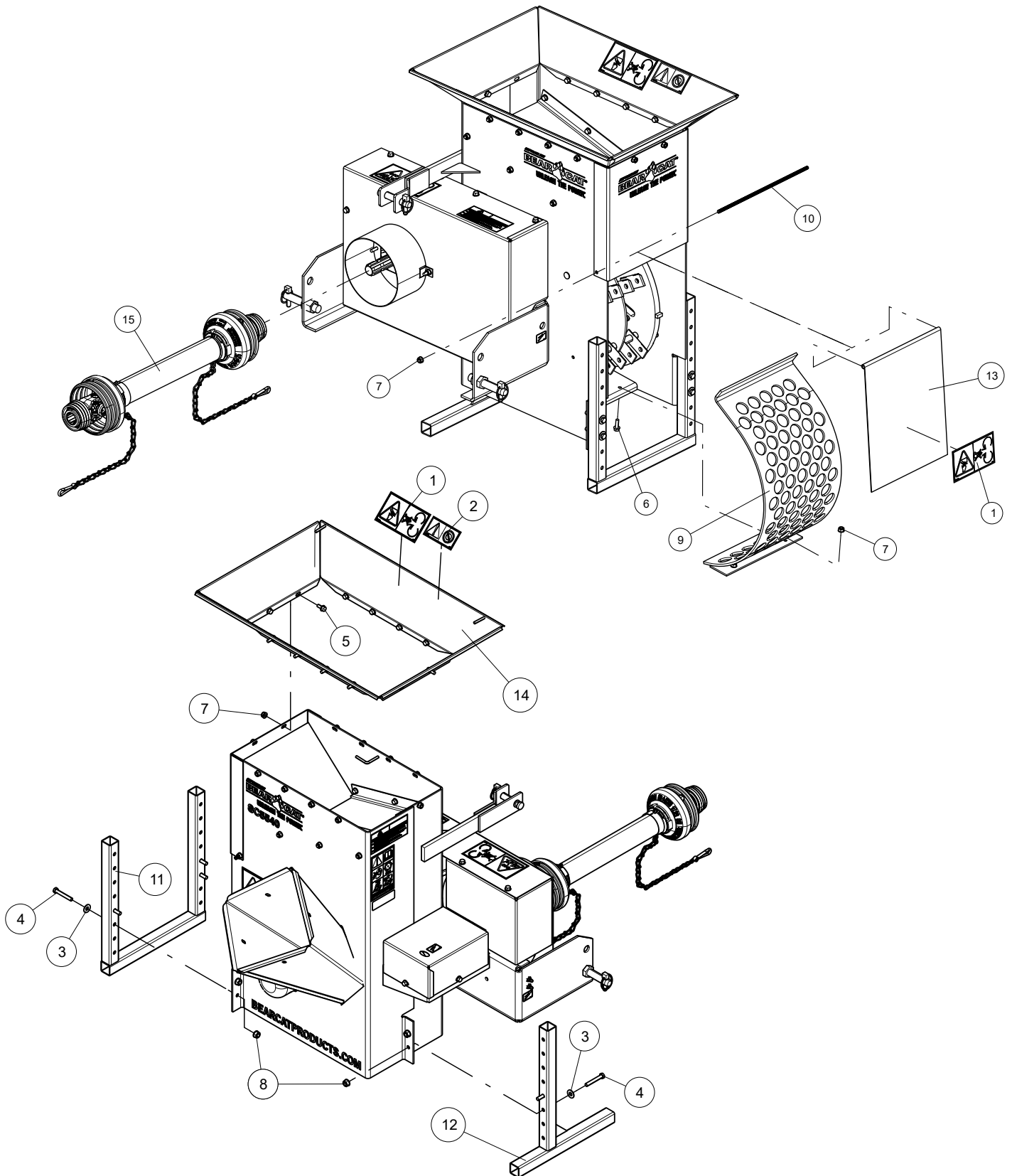
Shaft One and Shaft Four are symmetrical; Shaft Two and Shaft Five are symmetrical; Shaft Three and Shaft Six are symmetrical

ROTOR ASSEMBLY

Part #70969

ITEM	PART NUMBER	DESCRIPTION
1	15397	NUT, #10x24 NYLOCK
2	15447	BOLT, 5/16-18 x 1 HEX GR8 HCS PATCH ZP
3	15466	SCREW, #10-24 x 1-1/8
4	70367	SHORT SPACER (LARGE C/S)
5	70368	SPACER, SHORT BORED
6	70369	SPACER, .75 x 1.18
7	70370	MEDIUM SPACER-BORED LARGE C/S
8	70371	LONG SPACER LARGE C/S
9	70972	KIT, COMM SHRED W/ RECT KNIVES (includes Items 1, 3-8 & 12)
10	72493	KIT, CHIPPER BLADE 1-4" (includes Item 2)
11	72689	WELDMENT, LARGE ROTOR
12	77631-00	ROTOR KNIFE SHAFT SC5720B

ATTACHMENTS

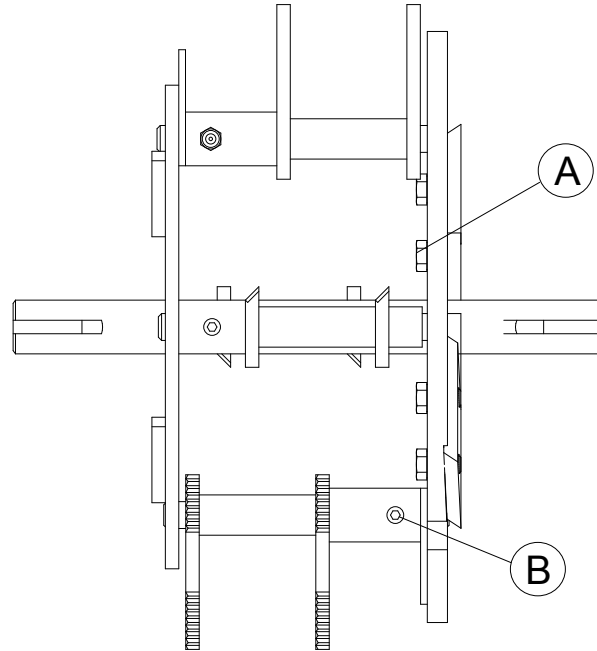


ATTACHMENTS

ITEM	PART NUMBER	DESCRIPTION
1	12175	DECAL, BLADE DANGER ISO
2	12176	DECAL, SHREDDER SIZE ISO
3	15031	WASHER, 3/8" FLAT ZP
4	15116	BOLT, 3/8 x 2-1/2 GR5 HHCS ZP
5	15118-00	BOLT, 5/16 x 3/4" SERRATED FLANGE NF
6	15120-00	BOLT, 5/16 x 1 FLANGE NC
7	15904-00	NUT, 5/16-18 NYLOCK FLANGE
8	15905-00	NUT, 3/8-16 NYLOCK FLANGE
9	70332	WELDMENT, LARGE SCREEN COARSE
10	70397	ROD, DOOR PIVOT
11	70416	WELDMENT, PTO C/S STAND
12	70417	WELDMENT, PTO C/S POST
13	70460	DISCHARGE DOOR WITH DECAL (includes Item 1)
14	70761	ASSEMBLY, HOPPER W/ DECALS (includes Items 1 & 2)
15	71848-00	ASSEMBLY, 4.5" PTO DRIVELINE (See DRIVELINE for part numbers)

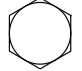


SPECIFICATIONS

SPECIAL TORQUE REQUIREMENTS			
LOCATION	HARDWARE	TORQUE (UNIFIED INCH)	TORQUE (METRIC)
A – On rotor plate, blade mounting bolts	5/16" x 1" hex, grade 8 bolts	25 ft-lbs.	34 Nm
B – On rotor knife shafts	10-24 x 1-1/8" screw	36 in-lbs.	4 Nm







BOLT TORQUE

The tables below are for reference purposes only and their use by anyone is entirely voluntary, unless otherwise noted. Reliance on their content for any purpose is at the sole risk of that person and any loss or damage resulting from the use of this information is the responsibility of that person.

SAE Grade and Head Markings	SAE 2	SAE 5	SAE 8	Bolt Diameter
				

BOLT DIAMETER (A)	BOLT TORQUE*					
	SAE 2		SAE 5		SAE 8	
	Nm	FT-LBS.	Nm	FT-LBS.	Nm	FT-LBS.
1/4"	7.5	5.5	11	8	16	12
5/16"	15	11	23	17	34	25
3/8"	27	20	41	30	61	45
7/16"	41	30	68	50	95	70
1/2"	68	50	102	75	149	110
9/16"	97	70	149	110	203	150
5/8"	122	90	203	150	312	230
3/4"	217	160	353	260	515	380
7/8"	230	170	542	400	814	600
1"	298	220	786	580	1220	900
1-1/8"	407	300	1085	800	1736	1280
1-1/4"	570	420	2631	1940	2468	1820

Metric Grade and Head Markings	4.8	8.8	10.9	12.9	Bolt Diameter
					

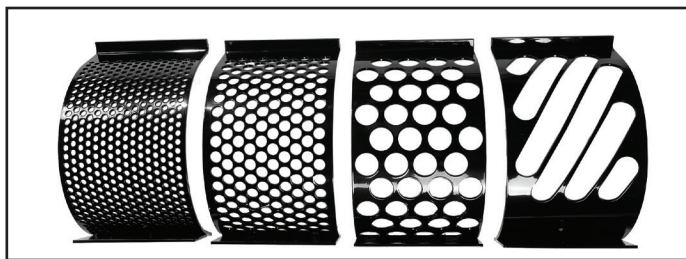
BOLT DIAMETER (A)	BOLT TORQUE*							
	4.8		8.8		10.9		12.9	
	Nm	FT-LBS.	Nm	FT-LBS.	Nm	FT-LBS.	Nm	FT-LBS.
M3	0.5	0.4	-	-	-	-	-	-
M4	3	2.2	-	-	-	-	-	-
M5	5	4	-	-	-	-	-	-
M6	6	4.5	11	8.5	17	12	19	14.5
M8	15	11	28	20	40	30	47	35
M10	29	21	55	40	80	60	95	70
M12	50	37	95	70	140	105	165	120
M14	80	60	150	110	225	165	260	190
M16	125	92	240	175	350	255	400	300
M18	175	125	330	250	475	350	560	410
M20	240	180	475	350	675	500	800	580
M22	330	250	650	475	925	675	1075	800
M24	425	310	825	600	1150	850	1350	1000
M27	625	450	1200	875	1700	1250	2000	1500

*Torque value for bolts and capscrews are identified by their head markings.

Torque figures indicated above are valid for non-greased or non-oiled threads and heads unless otherwise specified. Therefore, do not grease or oil bolts or capscrews unless otherwise specified in this manual. When using locking elements, increase torque values by 5%.

SERVICE PARTS & ACCESSORIES

PART NUMBER	DESCRIPTION
70332	SCREEN, STANDARD 1.5 INCH
70487	1-SPEED COMMERCIAL BLOWER PACKAGE
70531	SCREEN, MEDIUM .75 INCH
70559	SCREEN, WET DEBRIS
70703	SCREEN, FINE .375 INCH
70972	KIT, SHREDDER KNIFE REPLACEMENT
71110	2-SPEED BLOWER PACKAGE (use with part #71125)
71125	KIT, VACUUM HOSE
72493	KIT, CHIPPER BLADE



Discharge Screens
See Table for Part Number Details

1-SPEED COMMERCIAL BLOWER KIT P/N: 70487

PART NUMBER	DESCRIPTION	QTY.
70249-10	TUBE, BLOWER	1
70485-10	WELDMENT, BELT GUARD	1
72170	KIT, 70487 HARDWARE	1
72171	KIT 70487 OWNERS	1
72172	ASSEMBLY, 70487 BLOWER	1

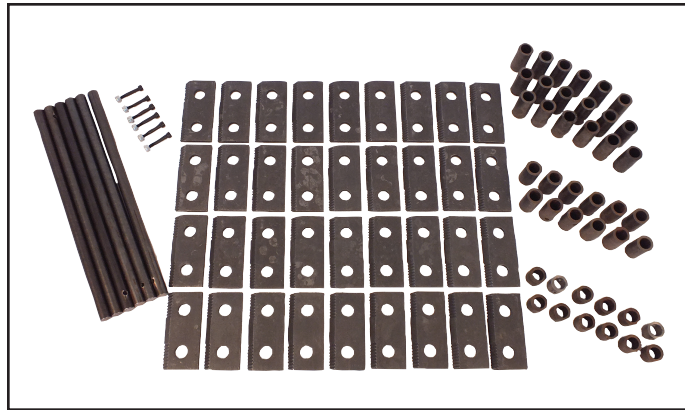


SERVICE PARTS & ACCESSORIES

SHREDDER KNIFE KIT

P/N: 70972

PART NUMBER	DESCRIPTION	QTY.
15397	NUT, #10X24 NYLOCK	6
15466	SCREW, 10-24 x 1-1/8	6
70367	SHORT SPACER (LARGE C/S)	10
70368	SPACER, SHORT BORED	2
70369	SPACER, 0.75 x 1.18	8
70370	MEDIUM SPACER-BORED LARGE C/S	4
70371	LOGG SPACER LARGE C/S	18
70856	SHREDDING KNIFE, RECTANGULAR	36
77631-00	ROTOR KNIFE SHAFT SC5720B	6



CHIPPER BLADE KIT

P/N: 72493

PART NUMBER	DESCRIPTION	QTY.
15447	BOLT, 5/16-18 x HCS GR8 PATCH Z	8
15565	BOLT, 5/16-18 x 1-1/4 HCS GR 8	8
70739	BLADE, TWO EDGE CHIPPER	4





Crary Bear Cat® • 237 12th St. NW, West Fargo, ND 58078

For customer service or for your nearest Crary Bear Cat dealer call 888.625.4520 | For International call 701.282.5520
BEARCATPRODUCTS.com

©2023 Crary Bear Cat, a subsidiary of ECHO Incorporated. All Rights Reserved. Printed in the U.S.A