

# CHIPPER SHREDDER BLOWER

## PARTS MANUAL

# SC5627B

Briggs & Stratton Vanguard®

P/N: 78526-00

Revision: 20230601

VIN Range: 5JAA0213NW006978 - Current

Companion to P/N: 78525-00



[BEARCATPRODUCTS.COM//](http://BEARCATPRODUCTS.COM//) **888.625.4520**

ENGLISH



WARNING: Cancer and Reproductive Harm  
[www.P65Warnings.ca.gov](http://www.P65Warnings.ca.gov)

# Before You Begin

## FOR MACHINE SERVICE OR PARTS

For service assistance, contact your nearest authorized Crary Bear Cat dealer or the factory. For parts, contact your authorized dealer. The parts manual for your machine is available at [bearcatproducts.com/Product-Support/Find-A-Product-Manual](http://bearcatproducts.com/Product-Support/Find-A-Product-Manual). Your dealer will need to know the serial number of your machine to provide the most efficient service. See below for information on how to identify and record the serial number for your machine.

## FOR ENGINE SERVICE OR PARTS

For engine service or parts, contact your nearest authorized engine dealer. Crary Bear Cat does not handle any parts, repairs or warranties for engines.

## ORDERING PARTS

Only genuine Crary Bear Cat replacement parts should be used to repair the machine. Replacement parts manufactured by others could present safety hazards, even though they may fit on this machine. Replacement parts are available from your Crary Bear Cat dealer.

Provide the following when ordering parts:

- The SERIAL NUMBER of your machine.
- The PART NUMBER of the part.
- The PART DESCRIPTION.
- The QUANTITY needed.

## IDENTIFICATION NUMBER LOCATION

Your machine will have a vehicle identification number (VIN). VINs are located on the left side of the trailer frame near the hitch. They are 17-digit numbers of the format: 5VJAA001XXWXXXXXX. For the exact location of the VIN, see the parts manual available at [bearcatproducts.com/Product-Support/Find-A-Product-Manual](http://bearcatproducts.com/Product-Support/Find-A-Product-Manual).

Record your identification number in the space provided.

## VEHICLE IDENTIFICATION NUMBER

MANUFACTURED BY/FABRIQUE PAR: CRARY INDUSTRIES, INC.	
FABRIQUE/MER'D DATE: PMBV/GVWR: PMBE/(GANR):	PNEU/TIRE: JANTE/RIM: PRESS DE GONF A FROID/COLD INFL:
THIS VEHICLE CONFORMS TO ALL APPLICABLE STANDARDS PRESCRIBED UNDER THE UNITED STATES AND CANADIAN MOTOR VEHICLE SAFETY REGULATIONS IN EFFECT ON THE DATE OF MANUFACTURE. CE VEHICULE EST CONFORME A TOUTES LES NORMES QUI LUI SONT APPLICABLES EN VERTU DU REGLEMENT SUR LA SECURITE DES VEHICULES AUTOMOBILES DES ETATS UNIS ET DU CANADA EN VIGUEUR A LA DATE DE SA FABRICATION.	
V. I. N. / N. I. V.: 5VJAA001--W-----	TYPE/TYPE DE VEHICULE: TRA/REM

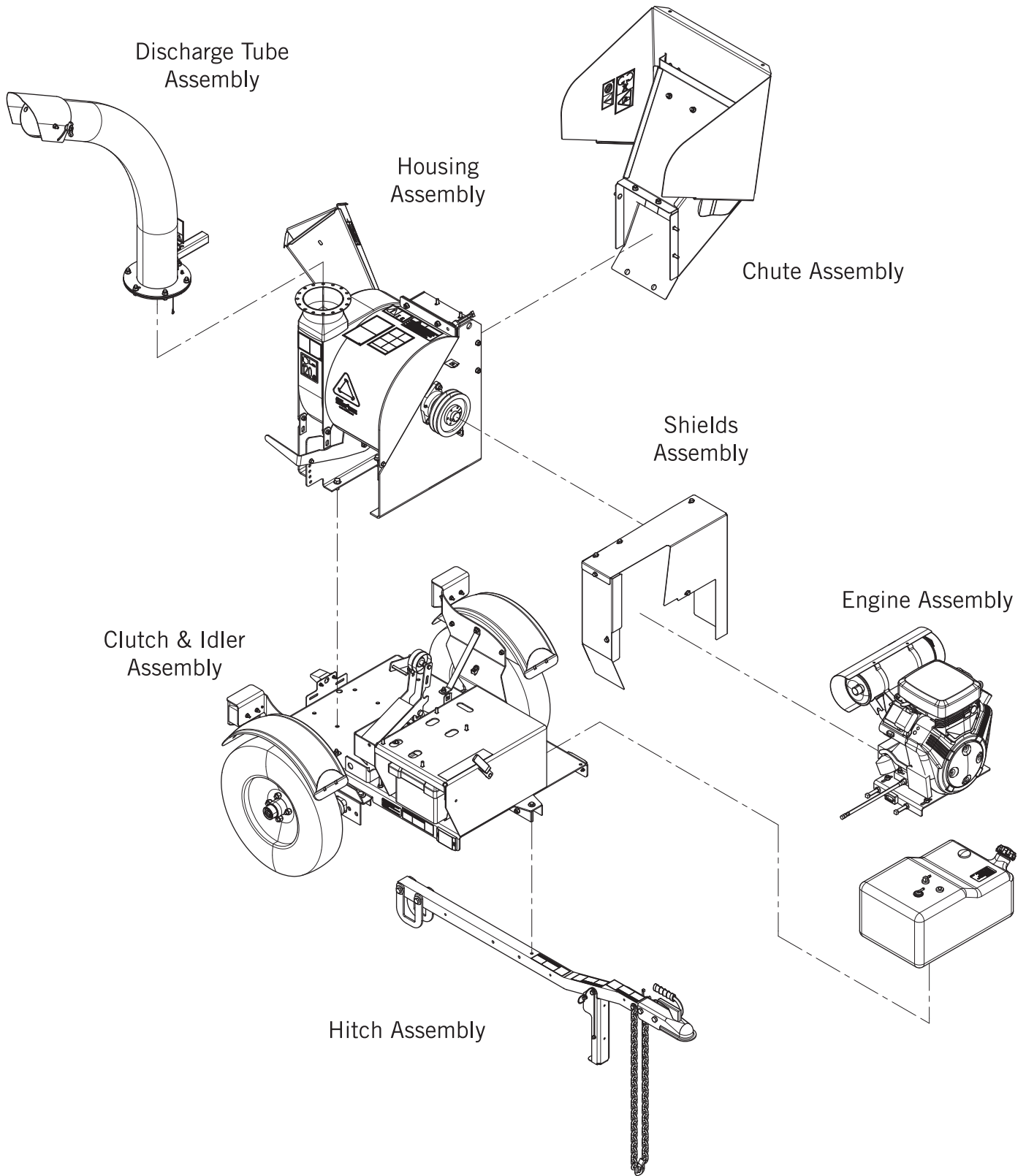
## HOW TO CONTACT Crary Bear Cat

ADDRESS	PHONE	E-MAIL	HOURS
237 NW 12th Street P.O. Box 849 West Fargo, ND 58078	888-625-4520 701-282-5520 Fax: 701-282-9522	<a href="mailto:sales@bearcatproducts.com">sales@bearcatproducts.com</a> <a href="mailto:service@bearcatproducts.com">service@bearcatproducts.com</a>	Monday - Friday 8 a.m. to 5 p.m. Central Time

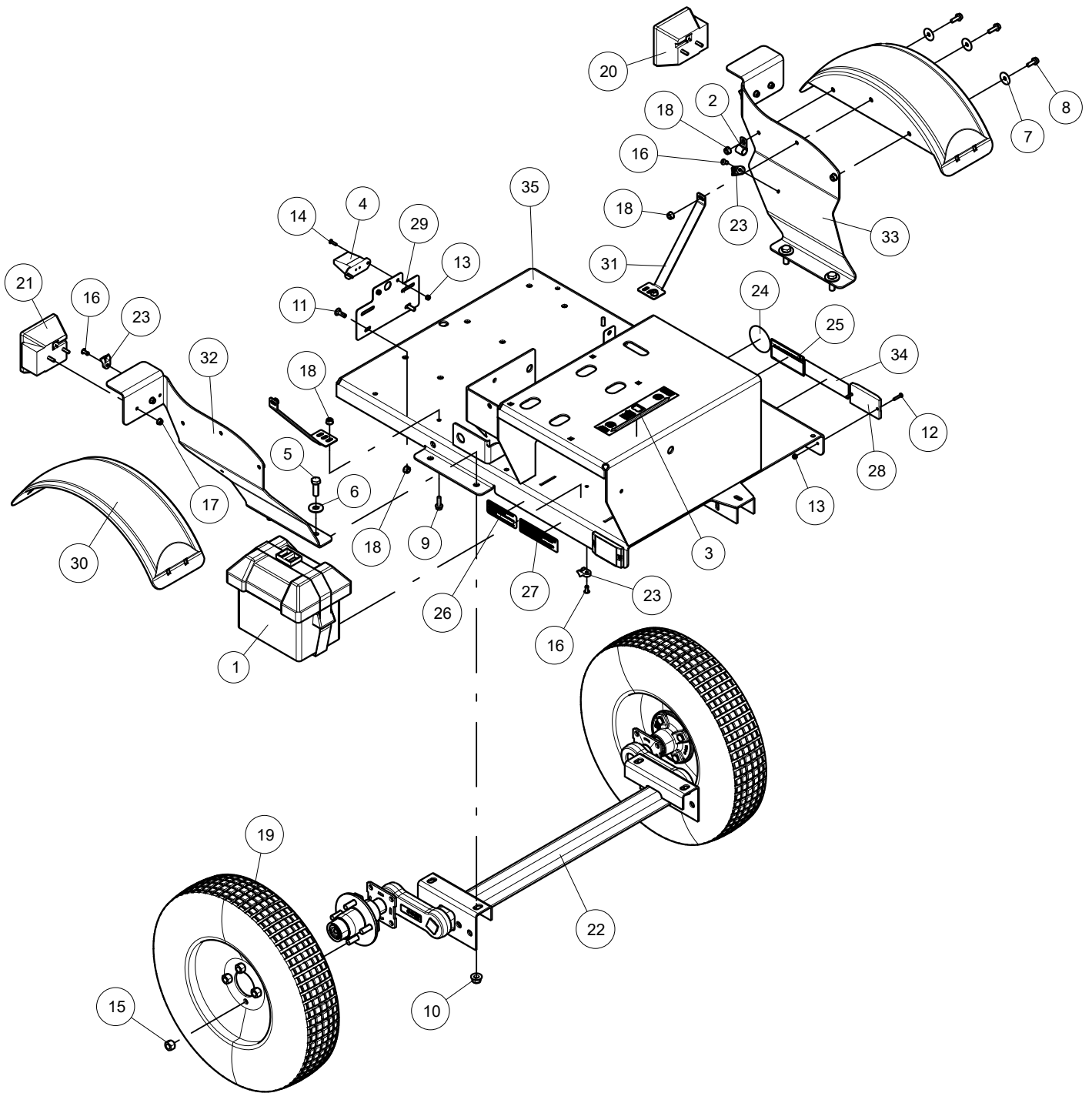
# **TABLE OF CONTENTS**

<b>EXPLODED VIEW.....</b>	<b>1</b>
<b>FRAME.....</b>	<b>2</b>
<b>HITCH.....</b>	<b>4</b>
<b>HOUSING (Drawing #1) .....</b>	<b>6</b>
<b>HOUSING (Drawing #2) .....</b>	<b>8</b>
<b>ROTOR.....</b>	<b>10</b>
<b>SHIELDS .....</b>	<b>11</b>
<b>IDLER.....</b>	<b>12</b>
<b>ENGINE.....</b>	<b>14</b>
<b>CHUTE .....</b>	<b>16</b>
<b>DISCHARGE TUBE .....</b>	<b>18</b>
<b>SPECIFICATIONS.....</b>	<b>20</b>
<b>BOLT TORQUE.....</b>	<b>21</b>
<b>SERVICE PARTS &amp; ACCESSORIES .....</b>	<b>22</b>

# EXPLODED VIEW



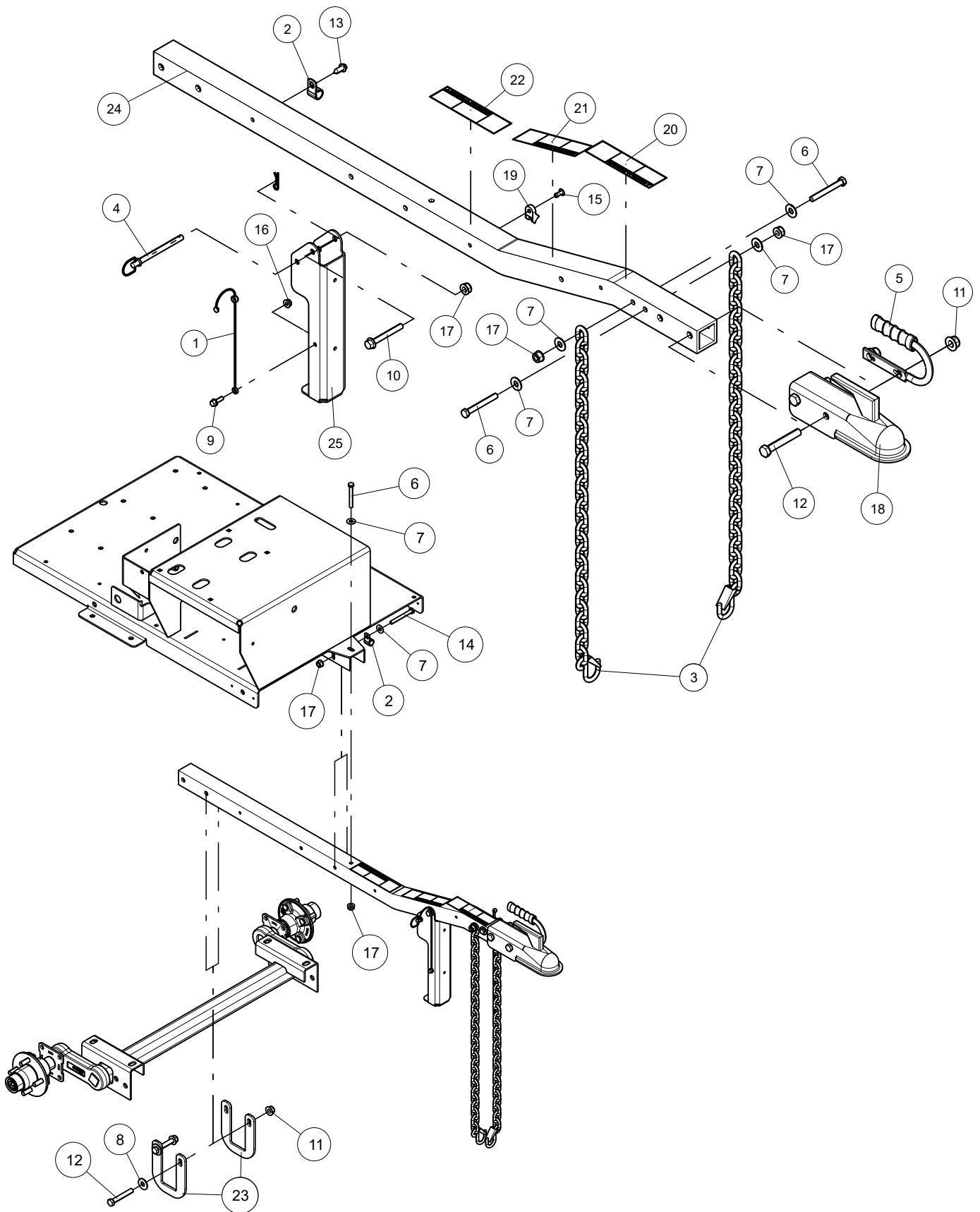
# FRAME



# FRAME

ITEM	PART NUMBER	DESCRIPTION
1	12839	BOX, SMALL BATTERY
2	14048-00	CLAMP, 9/16 COATED
3	14302-00	DECAL, CHIPPER ENGAGEMENT
4	14368-00	LIGHT, LICENSE PLATE
5	15014	BOLT, 1/2-13 × 1-1/2 HEX HD GR5
6	15034	WASHER, 1/2 FLAT
7	15040	WASHER, 5/16" FENDER ZP
8	15119-00	BOLT, 5/16 × 7/8 FLANGE NC
9	15120-00	BOLT, 5/16 × 1 FLANGE NC
10	15162-00	NUT, 1/2-13 NYLOCK FLANGE
11	15301	BOLT, 5/16-18 × 1 GR5 CRG
12	15393	SCREW, MCH 10-24 × 1" RND HD PHL ZP
13	15397	NUT, 10/24 NYLOCK TYPE NM ZP
14	15460	SCREW, MCH #10-24 × 3/4" PAN HD PH ZP
15	15527	NUT, 1/2-20 WHEEL
16	15828-00	RIVET, AL BLIND 1/4 × 3/4 DOME HEAD
17	15900-00	NUT, 1/4-20 NYLOCK FLANGE
18	15904-00	NUT, 5/16-18 NYLOCK FLANGE
19	16548	ASSEMBLY, 5.30-12 TIRE + SPOKE RIM
20	16903	LIGHT, LH TAIL
21	16904	LIGHT, RH TAIL
22	16917	AXLE, 1000 LB TORSION
23	18549-00	CLAMP, CABLE MOUNT
24	32361-00	DECAL, NATM COMPLIANCE
25	35746-00	DECAL, ST5.30-12 LOAD RATING SC5627B
26	35965-00	DECAL, CDI EPA EVAP
27	35968-00	DECAL, CARB PREEMPT STATUS
28	74911-00	KIT, LED AMBER LIGHT (includes part #33875-00 & 33876-00)
29	75543-10	PLATE, LICENSE
30	76624-00	FENDER, BLACK PLASTIC DRILLED
31	76984-10	BRACE, FENDER
32	78004-10	BRACKET, RH FENDER
33	78005-10	BRACKET, LH FENDER
34	–	TAG, VIN (not available for sale)
35	–	WELDMENT, C/S TRAILER (not available for sale)
–	17320	STRAP, 11 IN BLACK TIE (not shown)
–	32326-00	HARNESS, CHIPPER TRAILER (not shown)
–	33875-00	TERMINAL, RING #10 18GA (not shown)
–	33876-00	CONNECTOR, BUTT 18-22GA (not shown)

# HITCH

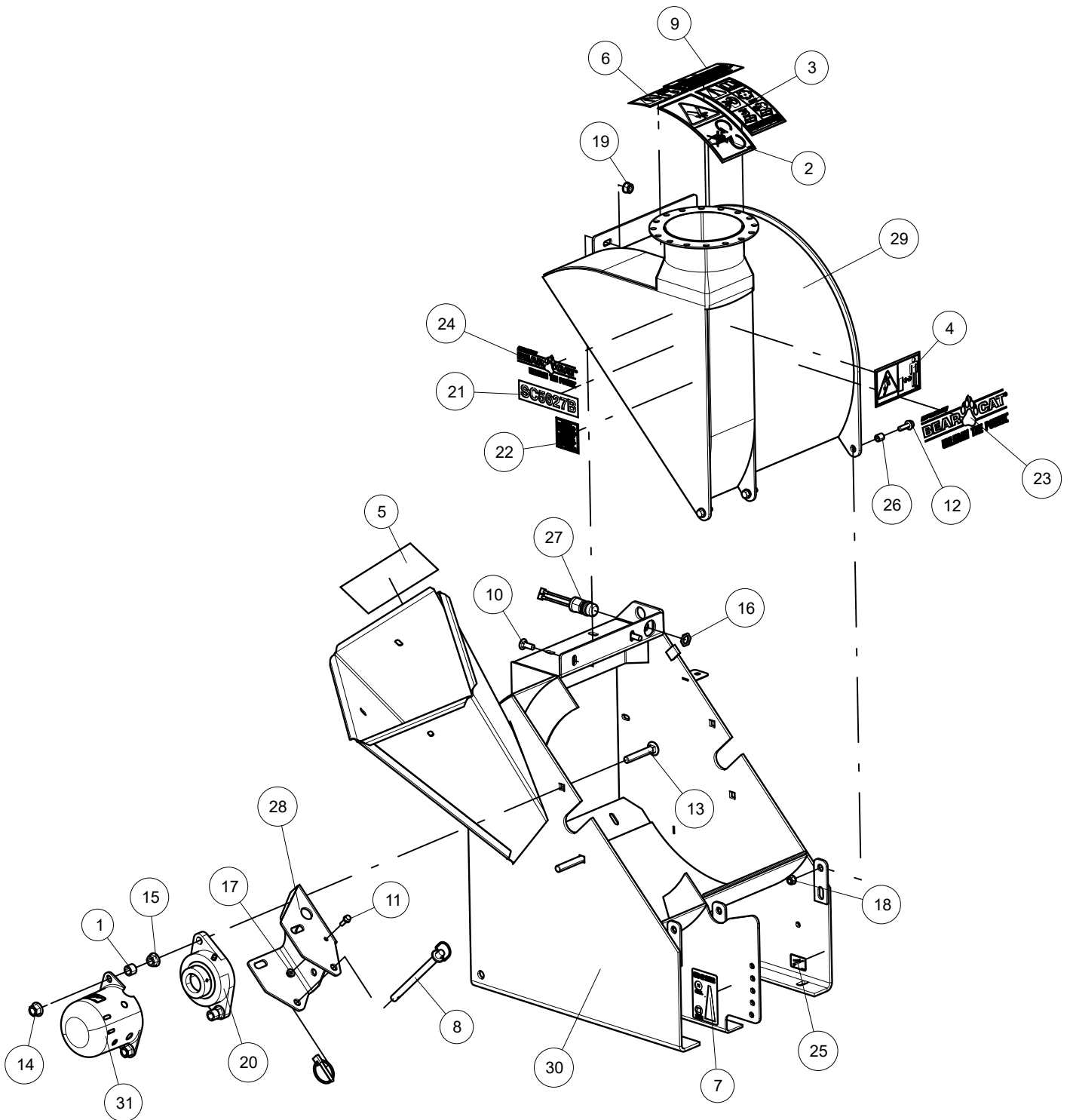


# HITCH

ITEM	PART NUMBER	DESCRIPTION
1	12530	LANYARD, NYLON
2	14048-00	CLAMP, 9/16 COATED
3	14381-00	CHAIN, SAFETY 5000 LB W/ LATCH
4	14823-00	PIN, 3/8 HITCH
5	14940-00	HANDLE, HITCH COUPLER
6	15009	BOLT, 3/8-16 × 3 GR5 HEX CAPSCREW
7	15031	WASHER, 3/8 FLAT
8	15034	WASHER, 1/2 FLAT
9	15079-00	BOLT, 1/4-20 × 3/4 HWH GR5 CZP
10	15155-00	BOLT, 3/8 × 3 FLANGE NC
11	15162-00	NUT, 1/2-13 NYLOCK FLANGE
12	15173	BOLT, 1/2 × 3-1/4 HCS GR5 ZP
13	15176	SCREW, 11/32-12 × 7/8 HWH T-AB
14	15501	BOLT, 3/8 × 3-1/4 HEX HD GR5 ZP
15	15828-00	RIVET, AL BLIND 1/4 × 3/4 DOME HEAD
16	15900-00	NUT, 1/4-20 NYLOCK FLANGE
17	15905-00	NUT, 3/8-16 NYLOCK FLANGE
18	17988	COUPLER, TRAILER HITCH
19	18549-00	CLAMP, CABLE MOUNT
20	32327-00	DECAL, SAFETY CHAINS
21	32328-00	DECAL, TRAILER ELECTRICAL
22	32332-00	DECAL, SAFE COUPLING
23	71846-10	PLATE, HITCH SADDLE
24	76803-10	POLE, C/S HITCH
25	76804-10	WELDMENT, STAND JACK
–	17320	STRAP, 11 IN BLACK TIE (not shown)
–	77504-00	KIT, SPANISH/PORTUGUESE TRAILER/COUPLER DECAL (not shown)



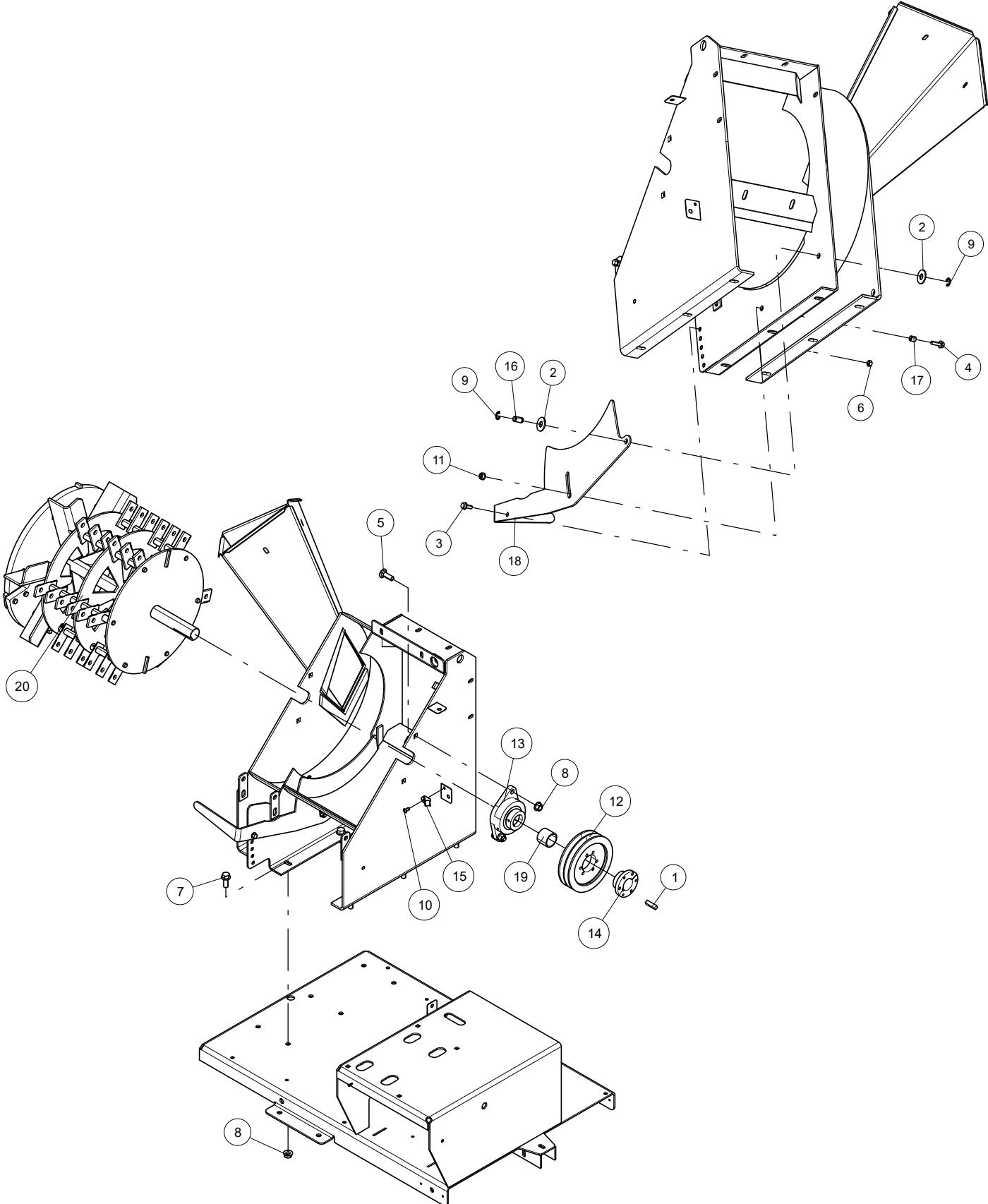
# HOUSING (Drawing #1)



# HOUSING (DRAWING #1)

ITEM	PART NUMBER	DESCRIPTION
1	0311-0110-00	BUSHING, 1/2ID × 3/4 OD × 17/32 LNST
2	12169	DECAL, KNIFE ACCESS ISO
3	12172	DECAL, OPERATING INSTRUCTIONS ISO
4	12173	DECAL, DISCHARGE ISO
5	12175	DECAL, BLADE DANGER ISO
6	12250	DECAL, MAINTENANCE ISO
7	13616-00	DECAL, SHRED SIZE
8	14544-00	PIN, HITCH 1/2 × 6-1/2 W/ LYNCH
9	14942-00	DECAL, MULTILINGUAL MANUAL
10	15057	BOLT, 3/8-16 × 1 GR5 CRG
11	15079-00	BOLT, 1/4-20 × 3/4 HWH GR5 CZP
12	15120-00	BOLT, 5/16 × 1 FLANGE NC
13	15142	BOLT, 1/2 × 3.00 GR5 CRG ZP
14	15162-00	NUT, 1/2-13 NYLOCK FLANGE
15	15616	NUT, 1/2 SPIRAL LOCK NC ZP
16	15775-00	NUT, 5/8-32 JAM
17	15900-00	NUT, 1/4-20 NYLOCK FLANGE
18	15904-00	NUT, 5/16-18 NYLOCK FLANGE
19	15905-00	NUT, 3/8-16 NYLOCK FLANGE
20	16004	BEARING, 2 BOLT FLANGE 1-1/2" BORE
21	33698-00	DECAL, MODEL SC5627B
22	33883-00	DECAL, SPARK ARRESTOR
23	34990-00	DECAL, CBC LOGO BLACK TAGLINE 3.11 x 9.42
24	34992-00	DECAL, CBC LOGO BLACK TAGLINE 2.01 x 6.04
25	35481-00	DECAL, GREASE GUN ICON
26	73508-00	SPACER, .50 × .50
27	76622-00	ASSEMBLY, SEALED SWITCH
28	76889-10	PLATE, ROTOR LOCK
29	78530-00	ASSEMBLY, SC5627B TOP W/ DECALS (Includes Items 2-4, 6, 9, 21-24)
30	78532-00	ASSEMBLY, SC5627B BODY W/ DECALS (Includes Items 5, 7, 25)
31	79212-00	ASSEMBLY, CAP LARGE CAP W/ DECALS (Includes Item 25)

# HOUSING (Drawing #2)

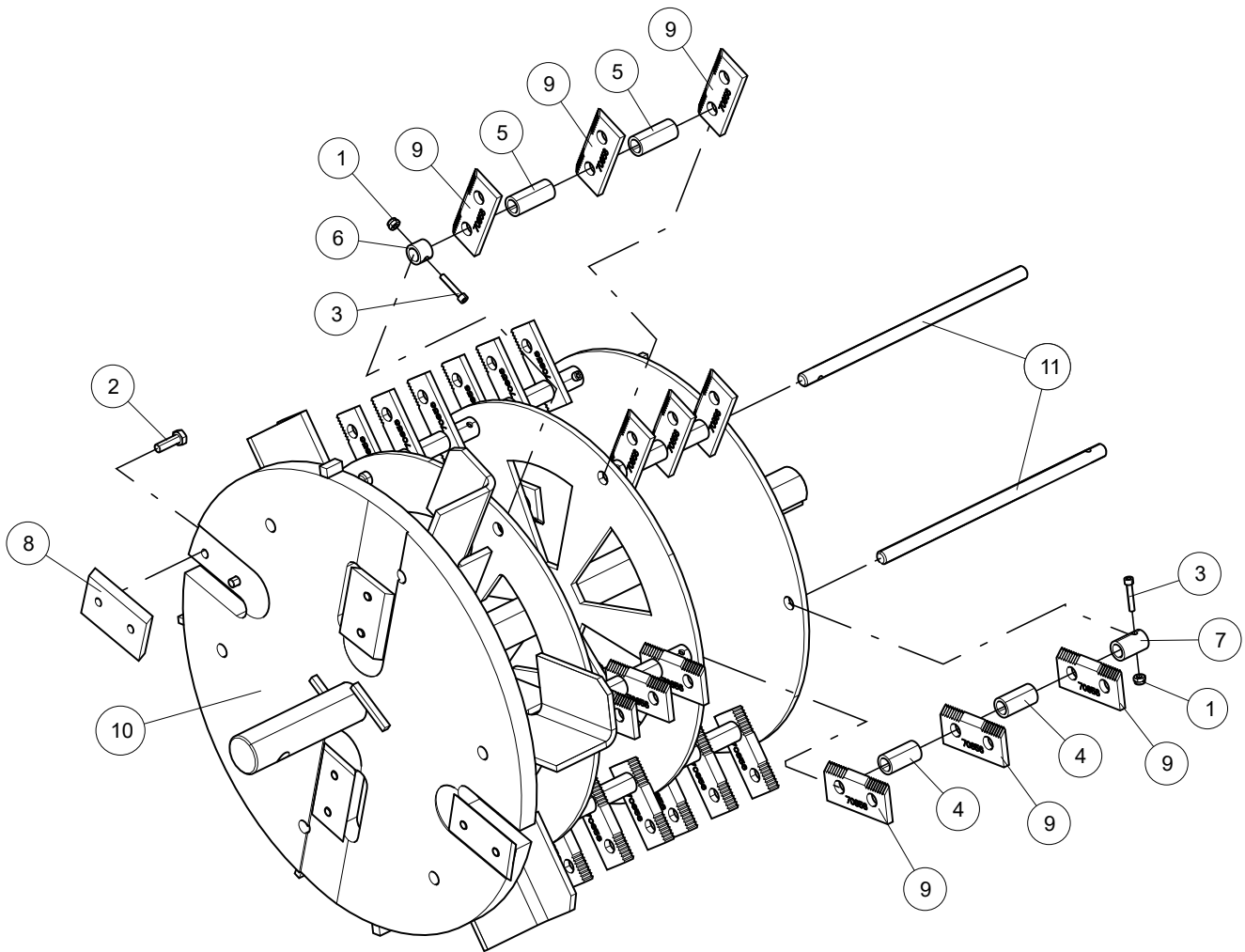


# HOUSING (DRAWING #2)

ITEM	PART NUMBER	DESCRIPTION
1	0122-0012-00	KEY, 3/8 SQ × 1-1/2
2	15034	WASHER, 1/2 FLAT
3	15117-00	BOLT, 5/16 × 3/4 FLANGE NC
4	15120-00	BOLT, 5/16 × 1 FLANGE NC
5	15157	BOLT, 1/2 × 1-1/2" GR5 CRG ZP
6	15178	NUT, 5/16" CENTERLOCK NC ZP
7	15612	BOLT, 1/2-13 × 1-1/4 SERRATED FLANGE
8	15616	NUT, 1/2 SPIRAL LOCK NC ZP
9	15683-00	CLIP, 1/2" E
10	15828-00	RIVET, AL BLIND 1/4 × 3/4 DOME HEAD
11	15904-00	NUT, 5/16-18 NYLOCK FLANGE
12	16001	SHEAVE, 2B 6.6 SDS
13	16004	BEARING, 2 BOLT FLANGE 1-1/2" BORE
14	16007	BUSHING, SDS 1-1/2"
15	18549-00	CLAMP, CABLE MOUNT
16	73485-00	PIN, RETAINER
17	73508-00	SPACER, .50 × .50
18	76862-40	ADJUSTOR, SHREDDER
19	77143-10	SPACER, 1-3/4" OD × 1-1/2" ID × 1-1/4"
20	77612-00	ASSEMBLY, 5" CS ROTOR KNIVES (see <b>ROTOR</b> for part numbers)
-	17320	STRAP, 11 IN BLACK TIE (not shown)

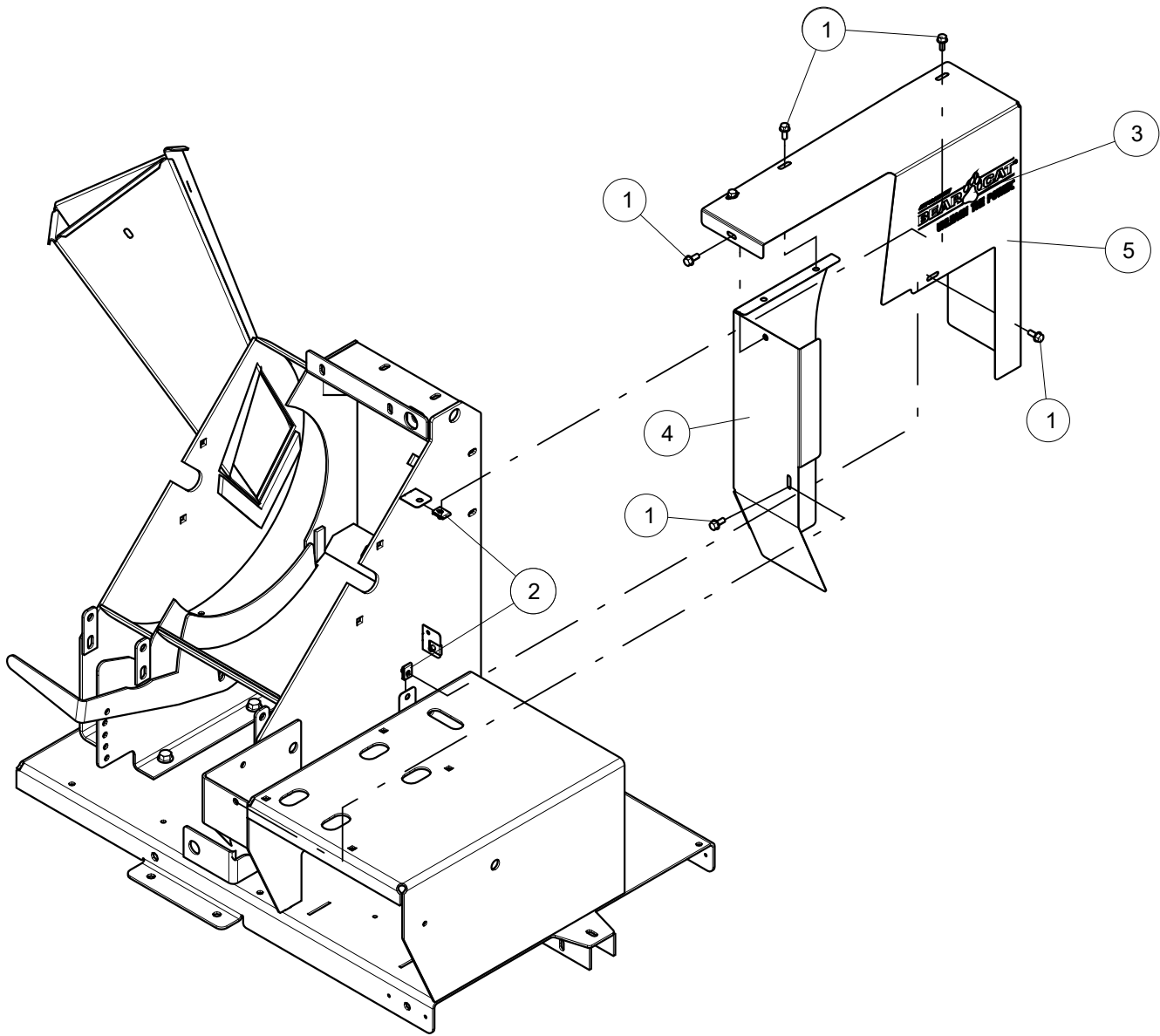
# ROTOR

Part #77612-00



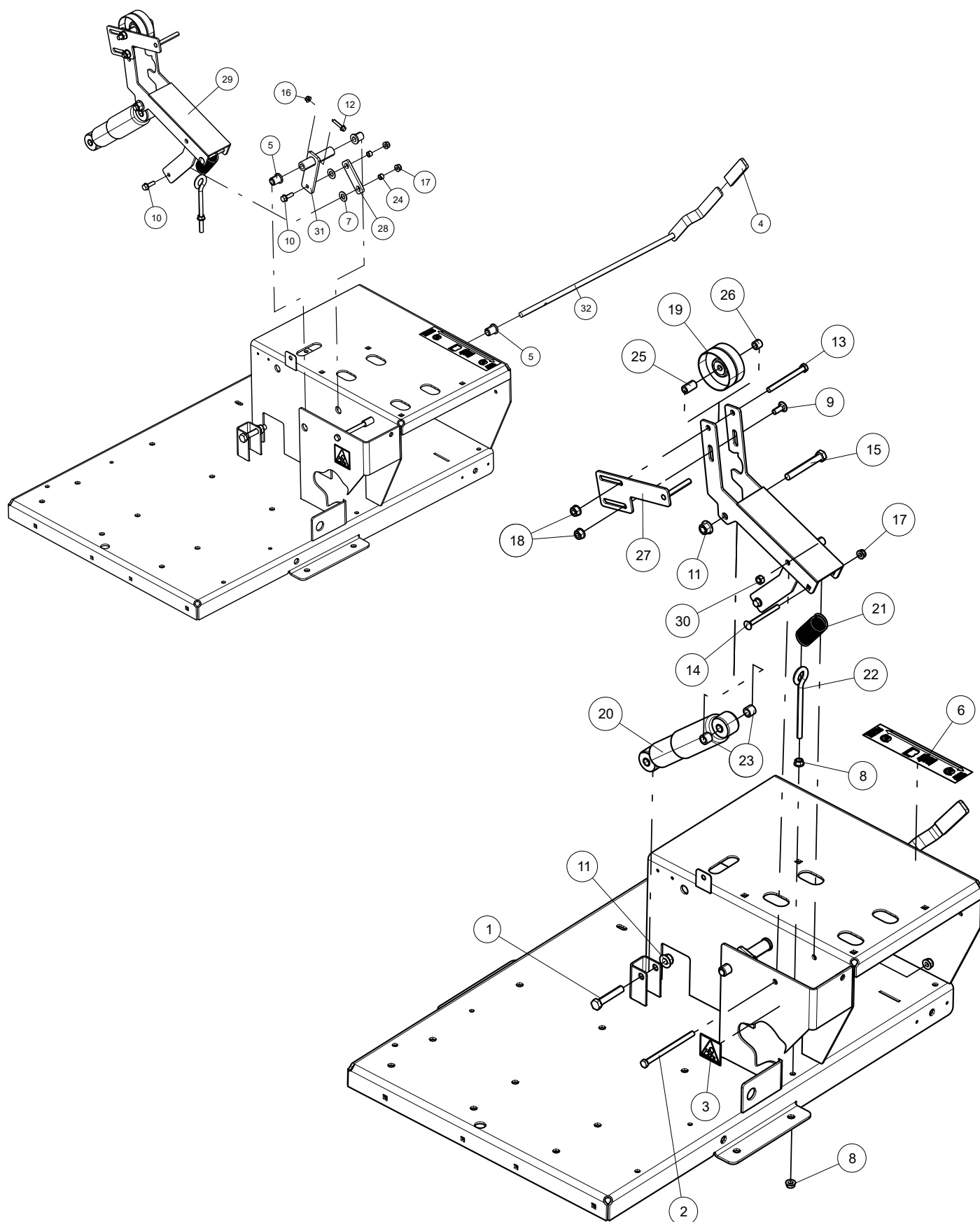
ITEM	PART NUMBER	DESCRIPTION
1	15397	NUT, 10/24 NYLOCK TYPE NM, ZP (For service order part #77613-00)
2	15447	BOLT, 5/16-18 × 1"GR8 HCS PATCH ZP (For service order part #72493)
3	15466	SCREW, #10-24 × 1-1/8" PL SKT HD CAP (For service order part #77613-00)
4	32520-00	SPACER, 0.75 × 0.51 × 1.44 (For service order part #77613-00)
5	32521-00	SPACER, 0.75 × 0.51 × 1.74 (For service order part #77613-00)
6	70368	SPACER, .75 × .59 W/ HOLE (For service order part #77613-00)
7	70370	SPACER, .75 × 1.18 W/ HOLE (For service order part #77613-00)
8	70739	BLADE, TWO EDGE CHIPPER (For service order part #72493)
9	70856	SHREDDING KNIFE, RECTANGULAR (For service order part #77613-00)
10	76844-00	WELDMENT, 5 INCH C/S ROTOR
11	77631-00	SHAFT, .50 × 10.875 (For service order part #77613-00)
-	72493	KIT, CHIPPER BLADE (includes Items 2 & 8)
-	77613-00	KIT, SC5627B SHREDDER KNIVES (includes Items 1, 3-7, 9, 11)

# SHIELDS



ITEM	PART NUMBER	DESCRIPTION
1	15117-00	BOLT, 5/16 × 3/4 FLANGE NC
2	15402	NUT, 5/16"-18 TINNERMAN U-TYPE
3	34991-00	DECAL, CBC LOGO O&W TAGLINE 3.11 x 9.42
4	76860-10	WELDMENT, SHIELD
5	78528-00	ASSEMBLY, SC5627B SHIELD W/ DECAL (Includes Item 3)

# IDLER

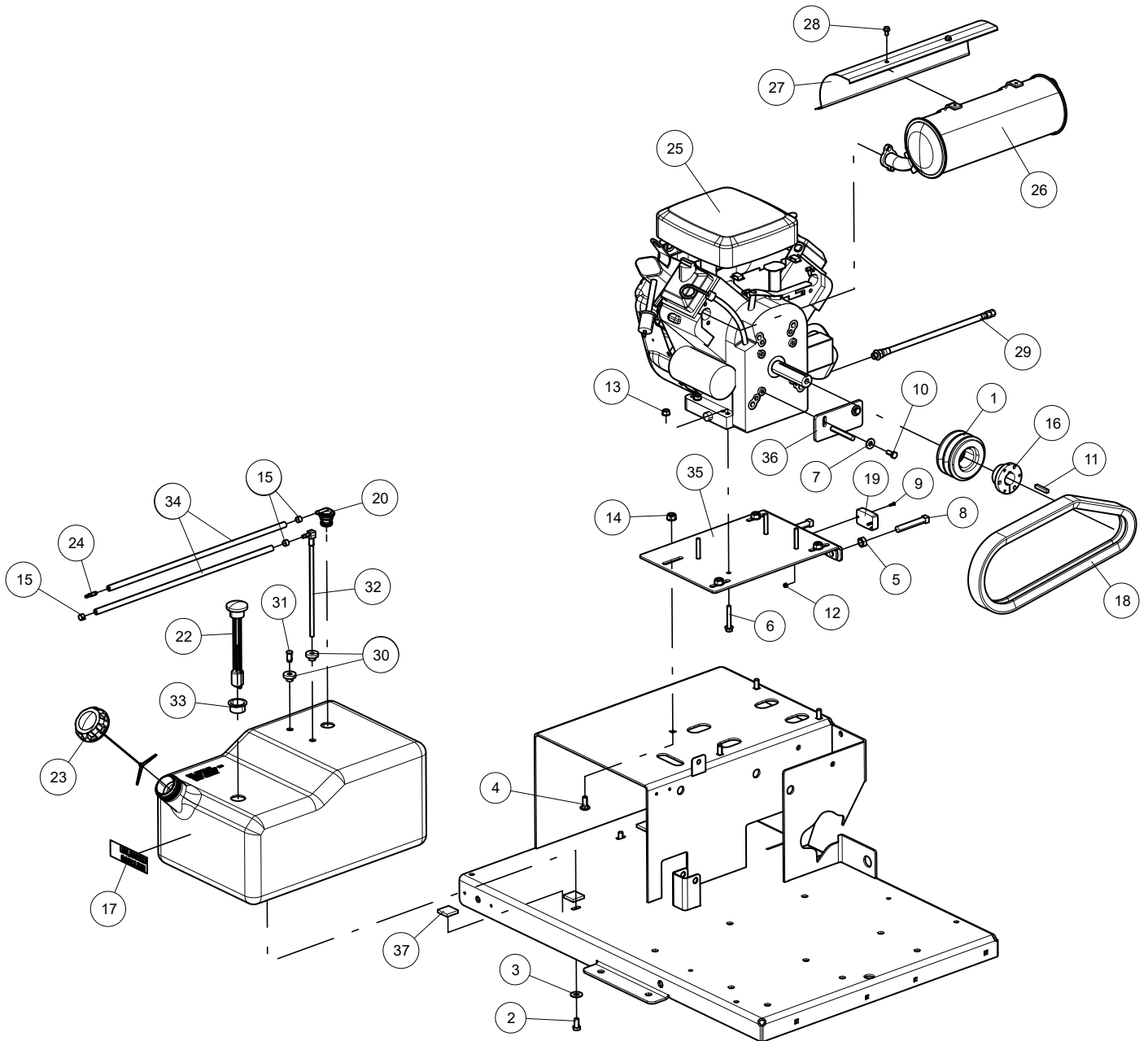


# IDLER

ITEM	PART NUMBER	DESCRIPTION
1	0103-0756-00	BOLT, 1/2 × 2-3/4 HEX GR5 ZP
2	0103-0848-00	BOLT, 3/8 × 5-1/2 HEX GR5 ZP
3	12174	DECAL, SHIELD DANGER ISO
4	14076-00	GRIP, CLUTCH HANDLE
5	14236-00	BUSHING, 1/2 × 1 FLANGE LUBE
6	14302-00	DECAL, CHIPPER ENGAGEMENT
7	14640-00	WASHER, 1/2 INCH NYLON
8	15051	NUT, 3/8-16 SERRATED FLANGE
9	15057	BOLT, 3/8-16 × 1 GR5 CRG
10	15120-00	BOLT, 5/16 × 1 FLANGE NC
11	15162-00	NUT, 1/2-13 NYLOCK FLANGE
12	15165-00	BOLT, 1/4 × 1-1/4 FLANGE NC
13	15272	BOLT, 3/8 × 4" HHCS GR5 NC ZP
14	15536	BOLT, 5/16 × 3-1/2 GR5 CRG ZP
15	15549	BOLT, 1/2 × 3-3/4 HHCS GR5 NC ZP
16	15900-00	NUT, 1/4-20 NYLOCK FLANGE
17	15904-00	NUT, 5/16-18 NYLOCK FLANGE
18	15905-00	NUT, 3/8-16 NYLOCK FLANGE
19	16319	PULLEY, 3-1/4 FLAT IDLER
20	16786	ABSORBER, IDLER SHOCK
21	17415	SPRING, 1.25 OD × 3.50 LG × .148 WD
22	17804	EYEBOLT, 3/8" × 5" LG 4-1/4 THD ZP
23	70367	SPACER, .75 × .59
24	73853-00	SPACER, 1/2 OD x 14 GA WALL x .320
25	74991-10	SPACER, .63 x 1.035
26	75483-00	SPACER, 5/8 OD x 11 GA x 0.500
27	76847-10	WELDMENT, PIVOT ROD
28	76848-10	PLATE, CONNECTING ARM
29	76981-10	WELDMENT, IDLE ARM
30	76987-10	SPACER, 5/8" OD × 3/8" ID × 0.28"
31	77008-10	WELDMENT, PIVOT ARM
32	77011-10	WELDMENT, HANDLE



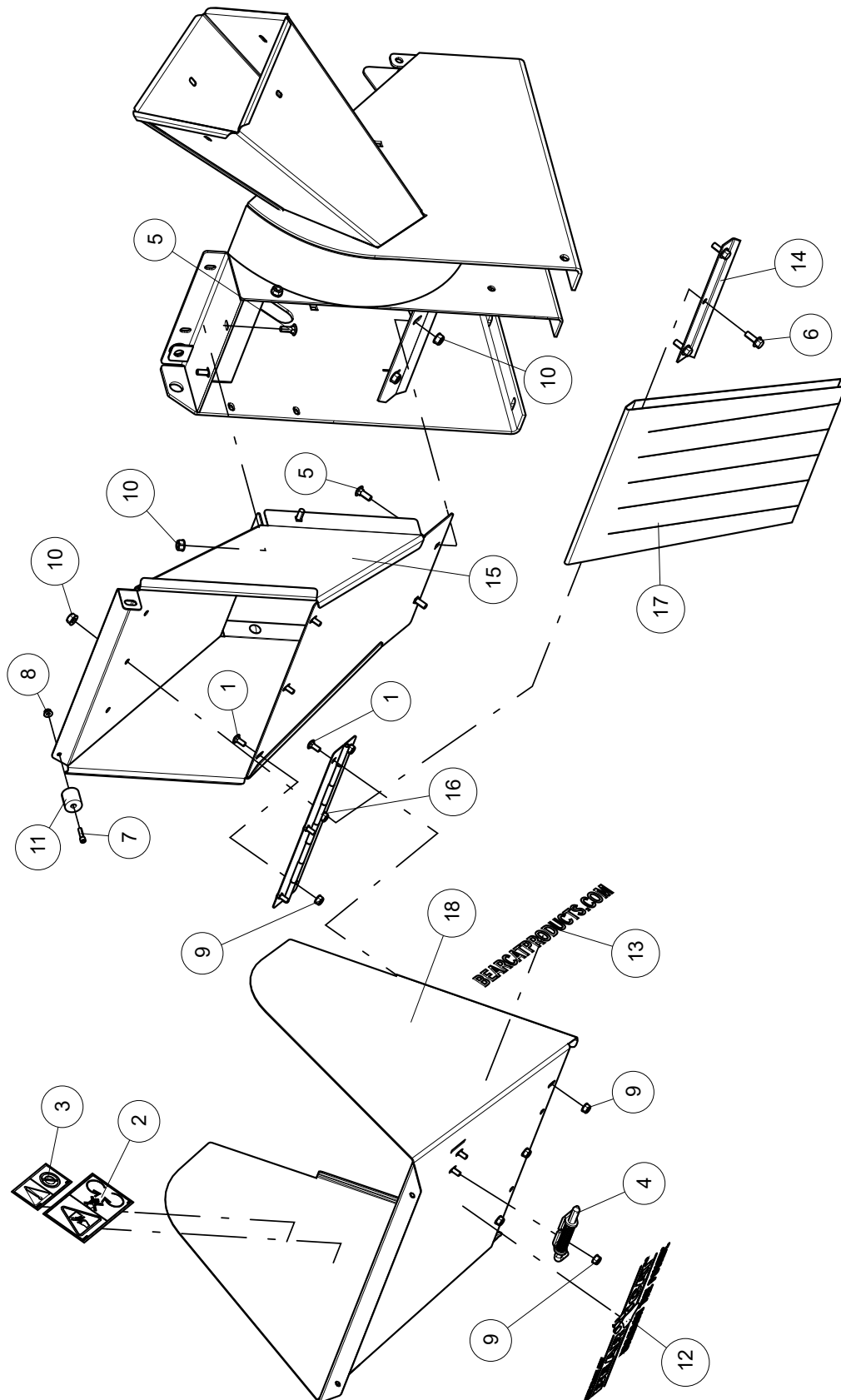
# ENGINE



# ENGINE

ITEM	PART NUMBER	DESCRIPTION
1	12446	SHEAVE, 2B3.6 SH, QD
2	15005	BOLT, 3/8 × 3/4 GR5 HEX CAPSCREW ZP
3	15031	WASHER, 3/8 FLAT
4	15057	BOLT, 3/8-16 × 1 GR5 CRG
5	15089	NUT, 1/2 NC ZP JAM
6	15133-00	BOLT, 5/16 × 2 FLANGE NC
7	15250	WASHER, 5/16 FLAT
8	15285	SETSCREW, 1/2 × 3 SQ HD 1/2 DOG PT
9	15314-00	SCREW, #6-32 × 3/4 PAN PHP ZP
10	15381	BOLT, 5/16-24 × 3/4" GR5 HHCS ZP
11	15418	KEY, 1/4 SQ × 1-1/2 LG PLAIN
12	15601	NUT, #6-32 NYLON LOCK ZP
13	15904-00	NUT, 5/16-18 NYLOCK FLANGE
14	15905-00	NUT, 3/8-16 NYLOCK FLANGE
15	16378	CLAMP, 15/32 SPRING
16	16901	BUSHING, SH 1-1/8"
17	18982-00	DECAL, UNLEADED GASOLINE
18	31498-00	BELT, 2RB40
19	31605-00	METER, TACH/HOUR
20	32542-00	VALVE, ROLL OVER
21	32822-00	TANK, ROTOMOLDED FUEL
22	32823-00	GAUGE, FUEL LEVEL KELCH 100
23	32824-00	CAP, NON-VENTED EPA/CARB APPROVED
24	33707-00	FITTING, 3/16" × 1/4" VACUUM
25	-	ENGINE, 23 HP BRIGGS (For service see engine owner's manual or your nearest Briggs & Stratton® industrial engine dealer.)
26	33742-00	MUFFLER, BRIGGS 23 HP OIL FILTER SIDE (For service see engine owner's manual or your nearest Briggs & Stratton industrial engine dealer.)
27	34945-00	SHIELD, MUFFLER 23 HP OIL FILTER SIDE
28	34946-00	SCREW, MUFFLER 23 HP BRIGGS
29	36152-00	HOSE ASSEMBLY, CRANKCASE DRAIN
30	36689-00	GROMMET, TANK FITTING
31	36690-00	PLUG, TANK VENT
32	36694-00	FITTING, TANK FUEL PICK-UP TUBE
33	36696-00	GROMMET, KELCH 100 GAUGE
34	71379	HOSE, 20" FUEL LINE
35	73392-10	WELDMENT, ENGINE ADJUSTER
36	73394-10	WELDMENT, BELT GUIDE
37	76477-00	PAD, FOAM FUEL TANK DAMPER
-	77711-00	ASSEMBLY, FUEL TANK (includes Items 17, 20-23, 30-33)
-	14901-00	CABLE, 24" NEG (R/R) (not shown)
-	17888	CABLE, 33" POS (R/R WITH BOOT) (not shown)
-	33701-00	WIRE ASSEMBLY, ENGINE KILL (not shown)
-	33740-00	HARNESS, B&S WIRE (not shown)

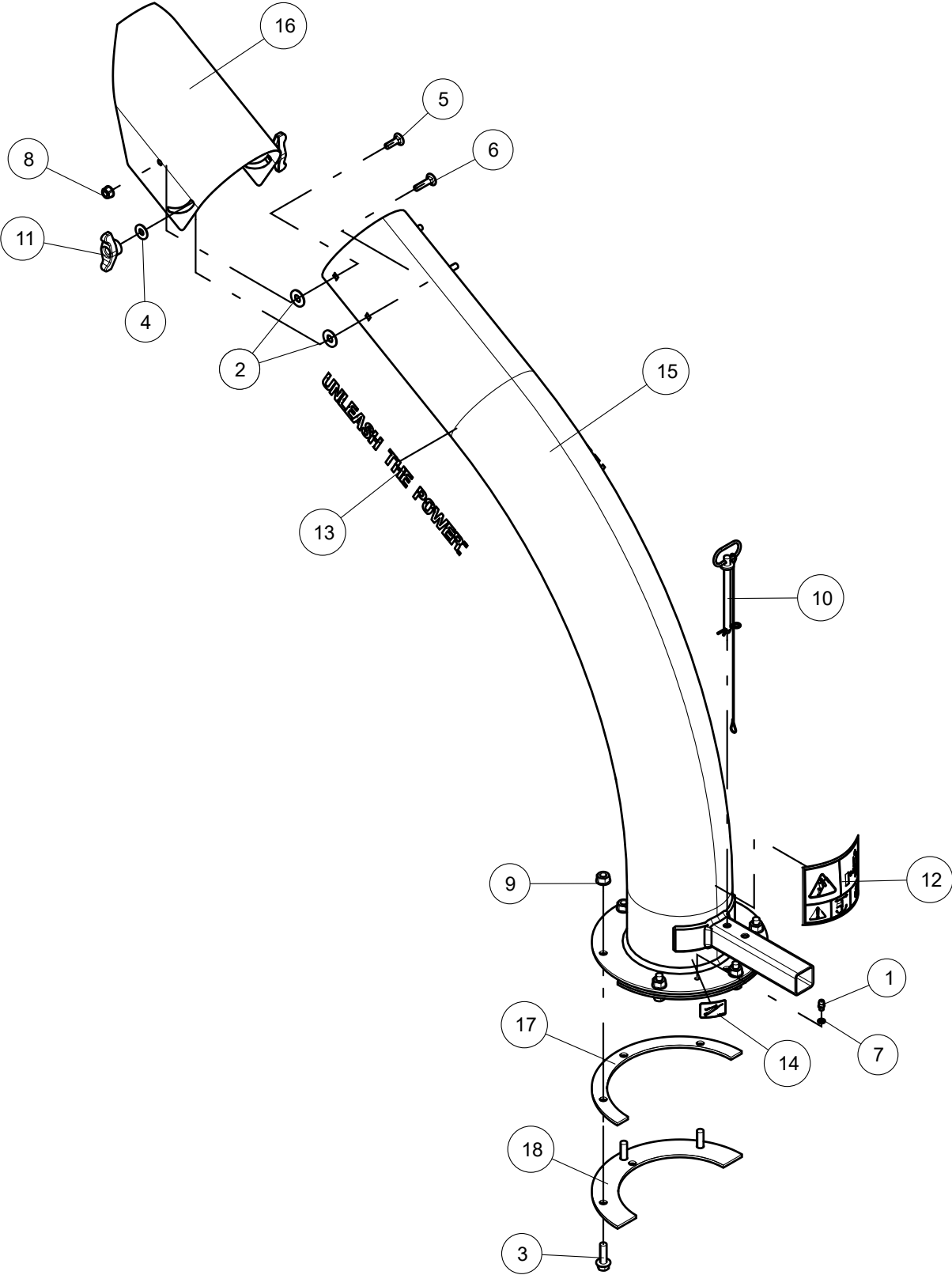
# CHUTE



# CHUTE

ITEM	PART NUMBER	DESCRIPTION
1	0103-0909-00	BOLT, 5/16-18 × 3/4 SN GR5 CRG
2	12175	DECAL, BLADE DANGER ISO
3	12176	DECAL, SHREDDER SIZE ISO
4	14971-00	LATCH, RH HINGE
5	15057	BOLT, 3/8-16 × 1 GR5 CRG
6	15163-00	BOLT, 3/8 × 1 FLANGE NC
7	15242	BOLT, 1/4 × 1 SOC HD CAP SCREW
8	15900-00	NUT, 1/4-20 NYLOCK FLANGE
9	15904-00	NUT, 5/16-18 NYLOCK FLANGE
10	15905-00	NUT, 3/8-16 NYLOCK FLANGE
11	18420-00	BUMPER, RECESSED RUBBER
12	34993-00	DECAL, CBC LOGO O&W TAGLINE 4.66 x 14.13
13	35219-00	DECAL, CBC WEB ADDRESS WHITE 1.13 x 17.81
14	73483-10	ANGLE, FLAP ANCHOR
15	76855-40	WELDMENT, CHUTE
16	76866-10	HINGE, EXTENSION TRAY
17	77006-00	FLAP, C/S/B CHUTE
18	78527-00	ASSEMBLY, SC5627B TRAY (Includes Items 2-4, 9, 12, 13)

# DISCHARGE TUBE



# DISCHARGE TUBE

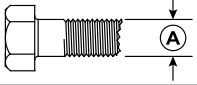
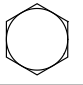
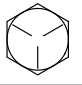

ITEM	PART NUMBER	DESCRIPTION
1	12275	ZERK, STRAIGHT 1/4-28 UNF MALE SELF-TAP .58 OVERALL LG
2	15031	WASHER, 3/8 FLAT
3	15109-00	BOLT, 3/8 × 1-1/4 FLANGE NC
4	15250	WASHER, 5/16" FLAT ZP
5	15301	BOLT, 5/16" × 1" GR5 CRG ZP
6	15398	BOLT, 5/16 × 1-1/4" GR5 CRG ZP
7	15584	WASHER, FLAT .254 × .400 × .048
8	15904-00	NUT, 5/16-18 NYLOCK FLANGE
9	15905-00	NUT, 3/8-16 NYLOCK FLANGE
10	30131-00	PIN, 3/8 × 4.25" DISCHARGE
11	31994-00	KNOB, 5/16-18 UNC TEE W/ LOCKING INSERT
12	32109-00	DECAL, DISCHARGE DEBRIS & LOCK
13	35222-00	DECAL, CBC TAGLINE O&W 1.18 x 12.90
14	35481-00	DECAL, GREASE GUN ICON
15	70166-00	ASSEMBLY, 6 INCH DISCHARGE CHUTE (Includes Items 12-14)
16	71081-10	DEFLECTOR, BLOWER VAC DISCHARGE
17	72452-10	SPACER, DISCHARGE PIVOT
18	72453-10	RING, DISCHARGE CLAMP

# SPECIFICATIONS

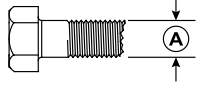




SPECIAL TORQUE REQUIREMENTS			
LOCATION	HARDWARE	TORQUE (UNIFIED INCH)	TORQUE (METRIC)
A – On rotor plate, blade mounting bolts	5/16" × 1" hex, grade 8 bolts	25 ft-lbs.	34 Nm
B – On rotor knife shafts	10-24 × 1-1/8" screw	36 in-lbs.	4 Nm

# BOLT TORQUE

The tables below are for reference purposes only and their use by anyone is entirely voluntary, unless otherwise noted. Reliance on their content for any purpose is at the sole risk of that person and any loss or damage resulting from the use of this information is the responsibility of that person.

SAE Grade and Head Markings	SAE 2	SAE 5	SAE 8	Bolt Diameter 
				

BOLT DIAMETER (A)	BOLT TORQUE*					
	SAE 2		SAE 5		SAE 8	
	Nm	FT-LBS.	Nm	FT-LBS.	Nm	FT-LBS.
1/4"	7.5	5.5	11	8	16	12
5/16"	15	11	23	17	34	25
3/8"	27	20	41	30	61	45
7/16"	41	30	68	50	95	70
1/2"	68	50	102	75	149	110
9/16"	97	70	149	110	203	150
5/8"	122	90	203	150	312	230
3/4"	217	160	353	260	515	380
7/8"	230	170	542	400	814	600
1"	298	220	786	580	1220	900
1-1/8"	407	300	1085	800	1736	1280
1-1/4"	570	420	2631	1940	2468	1820

Metric Grade and Head Markings	4.8	8.8	10.9	12.9	Bolt Diameter 
					

BOLT DIAMETER (A)	BOLT TORQUE*							
	4.8		8.8		10.9		12.9	
	Nm	FT-LBS.	Nm	FT-LBS.	Nm	FT-LBS.	Nm	FT-LBS.
M3	0.5	0.4	-	-	-	-	-	-
M4	3	2.2	-	-	-	-	-	-
M5	5	4	-	-	-	-	-	-
M6	6	4.5	11	8.5	17	12	19	14.5
M8	15	11	28	20	40	30	47	35
M10	29	21	55	40	80	60	95	70
M12	50	37	95	70	140	105	165	120
M14	80	60	150	110	225	165	260	190
M16	125	92	240	175	350	255	400	300
M18	175	125	330	250	475	350	560	410
M20	240	180	475	350	675	500	800	580
M22	330	250	650	475	925	675	1075	800
M24	425	310	825	600	1150	850	1350	1000
M27	625	450	1200	875	1700	1250	2000	1500

\*Torque value for bolts and capscrews are identified by their head markings.

Torque figures indicated above are valid for non-greased or non-oiled threads and heads unless otherwise specified. Therefore, do not grease or oil bolts or capscrews unless otherwise specified in this manual. When using locking elements, increase torque values by 5%.



# SERVICE PARTS & ACCESSORIES

PART NUMBER	DESCRIPTION
71930-00	KIT, 6" LOW PROFILE DISCHARGE
72493	KIT, CHIPPER BLADE
77613-00	KIT, SC5627B SHREDDER KNIVES

## 6" LOW PROFILE DISCHARGE CHUTE KIT

P/N: 71930-00

PART NUMBER	DESCRIPTION	QTY.
15109-00	BOLT, 3/8 x 1-1/4 FLANGE NC	6
15250	WASHER, 5/16 FLAT	6
15301	BOLT, 5/16 x 1 CRG	2
15398	BOLT, 5/16 x 1-1/4 CRG	2
15904-00	NUT, 5/16-18 NYLOCK FLANGE	2
15905-00	NUT, 3/8-16 NYLOCK FLANGE	6
30131-00	PIN, 3/8" x 4.25" DISCHARGE	1
31994-00	KNOB, 5/16-18 UNCTEE WITH LOCKING INSERT	2
71920-00	ASSEMBLY, 6" LOW PROFILE DISCHARGE	1
71931-10	CAP, 6" LOW PROFILE DISCHARGE	1
72452-10	SPACER, CHIPPER DISCHARGE	2
72453-10	CLAMP, CHIPPER DISCHARGE	2



## CHIPPER BLADE KIT

P/N: 72493

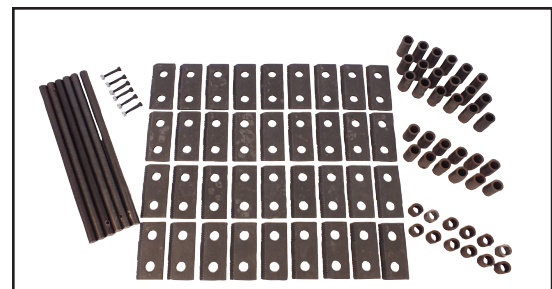
PART NUMBER	DESCRIPTION	QTY.
15447	BOLT, 5/16-18 x HCS GR8 PATCH Z	8
15565	BOLT, 5/16-18 x 1-1/4 HCS GR 8	8
70739	BLADE, TWO EDGE CHIPPER	4



## SC5720B SHREDDER KNIVES KIT

P/N: 77613-00

PART NUMBER	DESCRIPTION	QTY.
15397	NUT, #10x24 NYLOCK	6
15466	SCREW 10-24 x 1-1/8	6
70368	SPACER, SHORT BORED	6
70370	MEDIUM SPACER-BORED LARGE C/S	6
70856	SHREDDING KNIFE, RECTANGULAR	36
32520-00	SPACER, 0.75 x 0.51 x 1.44	12
32521-00	SPACER, 0.75 x 0.51 x 1.74	12
77631-00	ROTOR KNIFE SHAFT SC5720B	6









Crary Bear Cat® • 237 12th St. NW, West Fargo, ND 58078

For customer service or for your nearest Crary Bear Cat dealer call 888.625.4520 | For International call 701.282.5520  
BEARCATPRODUCTS.com

©2023 Crary Bear Cat, a subsidiary of ECHO Incorporated. All Rights Reserved. Printed in the U.S.A