



LECCY & GENESIS

STEP BY STEP SETUP GUIDE FOR DOORLOCK A6



Follow the steps to set up and configure your Doorlock A6 on Tuya App

1. Scan the QR code and install the Tuya APP available for Android and iOS



For Android



For iOS

2. Create an account using your mobile number or email

3. Now we need to add the device to your account but before adding the device we need to prepare the smart lock for pairing.

Entering Setup Mode on Doorlock

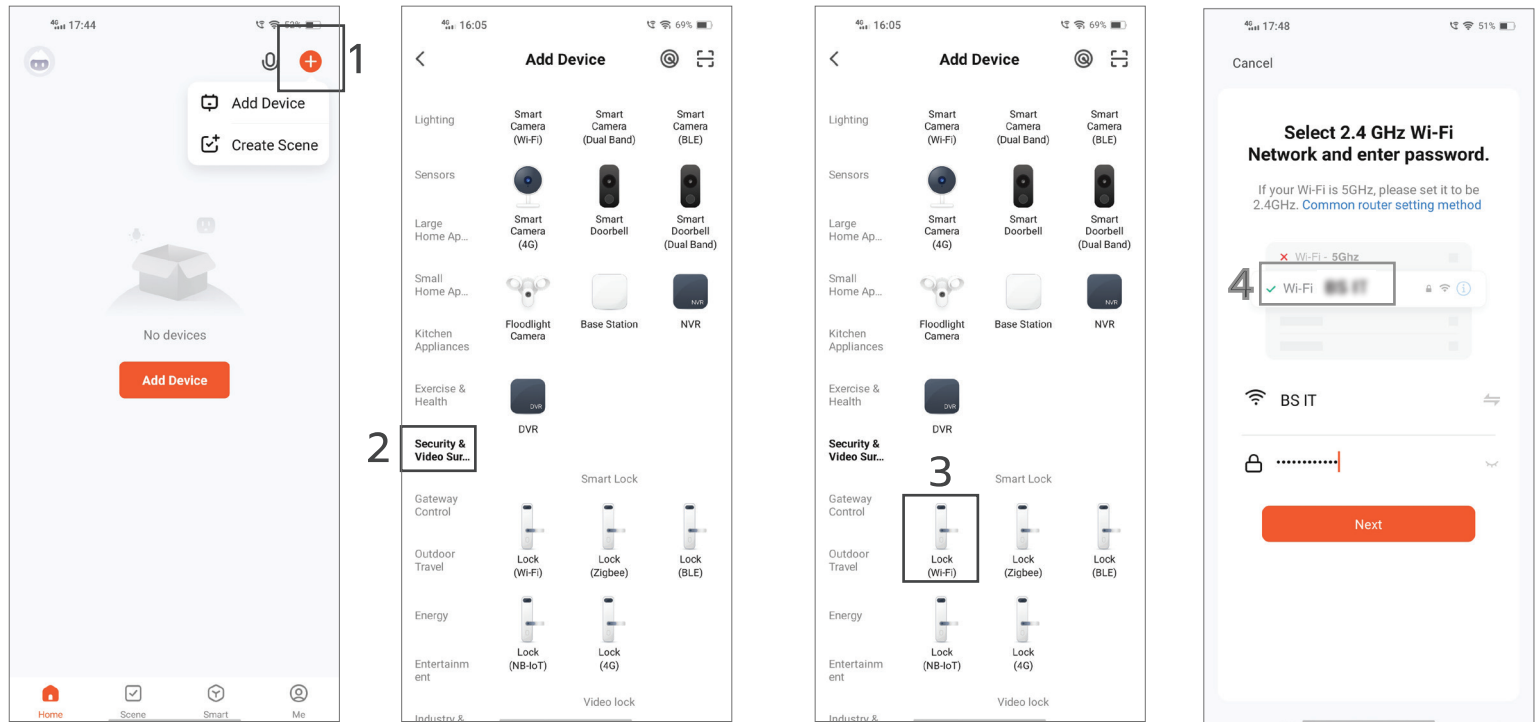
On the Door lock

1. First, touch the glass panel to light up the keypad on door lock.
2. Press '0#' (zero-hash) to enter Setup mode
3. Enter the default code, which is '0123456789#'
4. Use 2, 8 to navigate sideways and 4, 6 to navigate up and down through the menu.
5. Find 'System' and press #
6. Select 'Network' and press #
7. Select 'Enable' and press # (You will hear a voice prompt succeeded with a 120 seconds timer)
8. After a few seconds, number 5 will start blinking on the lock.

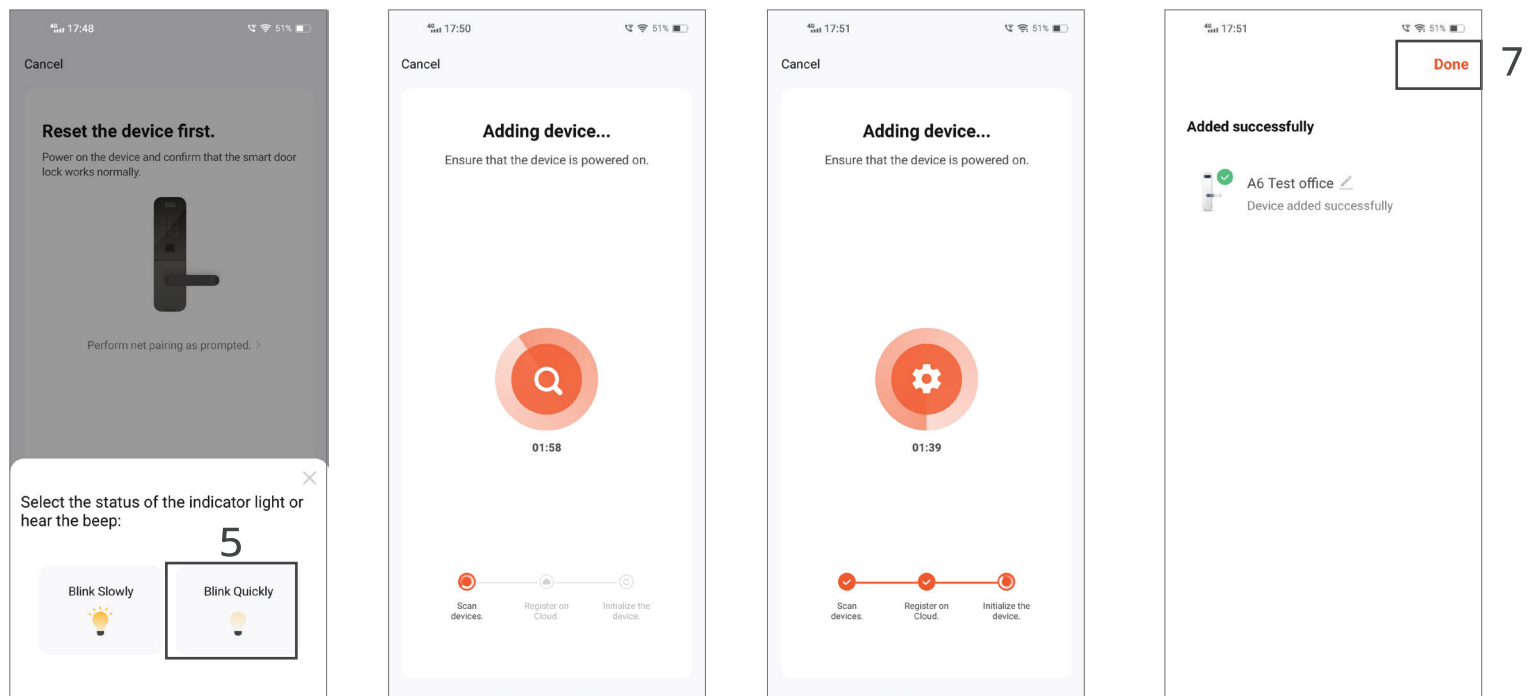
Now your lock is in setup mode, you're ready to perform some more steps on your app. We're assuming that you already installed the app mentioned above and your phone is connected to the wifi 2.4 GHz Frequency.

Configure Smart Life App

1. On the default screen of the Tuya App, click on the '+' icon in the top right corner and then click on 'Add Device'.
2. Select 'Security & video Surveillance'.
3. Select 'Lock (Wi-Fi)'.
4. On the Wi-Fi page, enter the Wi-Fi name and password and click 'next' (make sure you are connected to a 2.4GHz network).



5. Click on 'Blink Quickly'.
6. Wait for the device to get added.
7. Click 'done' and you're ready to play with it.





LECCY & GENESIS



+91-818181-0654



support@leccygenesis.com



www.leccygenesis.com