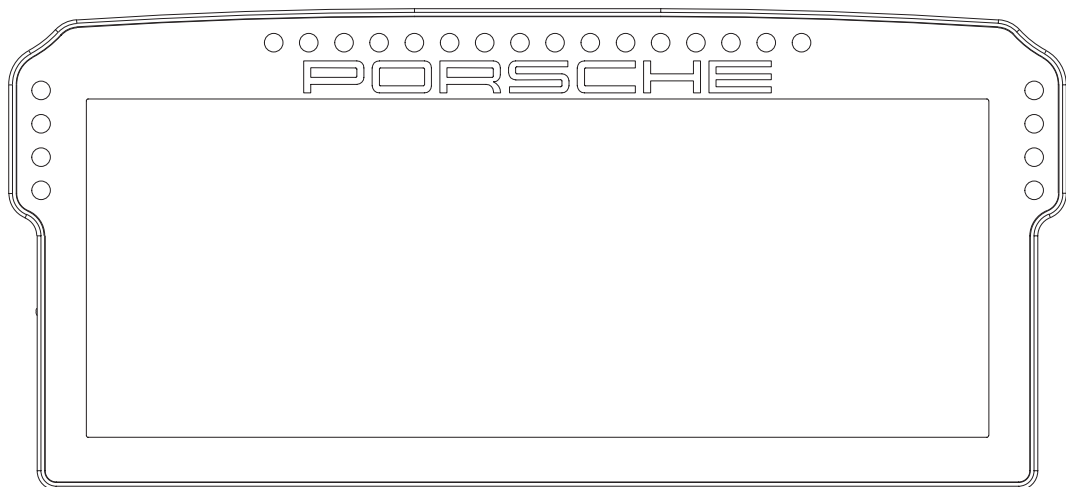




INSTRUCTION MANUAL



PORSCHE 911 GT3 CUP DASHBOARD DISPLAY UNIT

VERSION 1.2
Last updated: 19-06-2023

BEFORE YOU START:

Thank you for your purchase. In this manual we will provide you with the means to get started using your new dash!

Porsche 911 GT3 Cup Dashboard Display Unit

Features:

10.3" 1920x720 LCD

Contrast ratio 1000:1

60 FPS

24-bit Colors

24 full RGB LEDs


Multiple software options

Porsche licensed

Mounting the dash is very easy thanks to the included mounting brackets. We offer a wide range of support for most popular hardware.

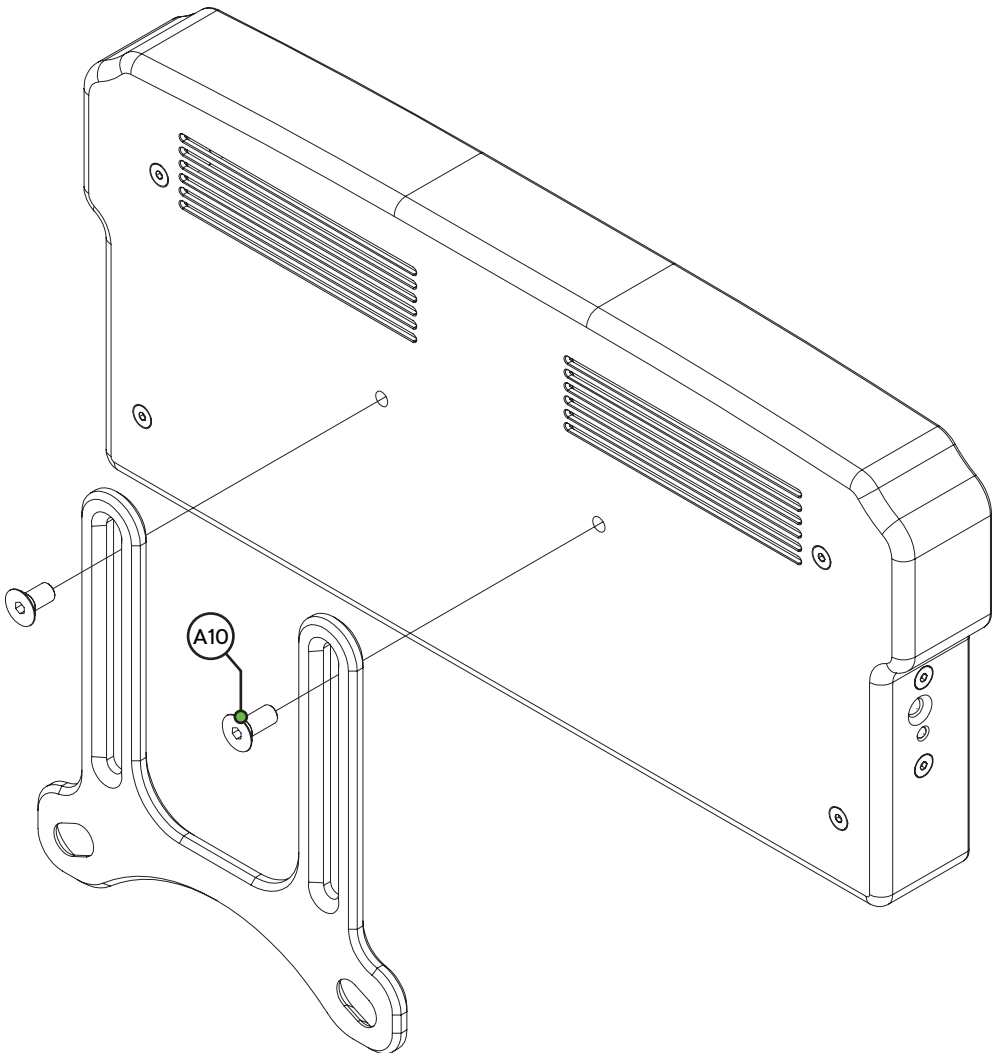
In this manual we only display the two mounting brackets included with the dash. Please review our website to determine which mounting bracket fits your hardware.

Remote control

Included is a simple remote control. Batteries are not included. This is only used when the screen has gone in hibernation mode. Press the home button  to wake the display up.

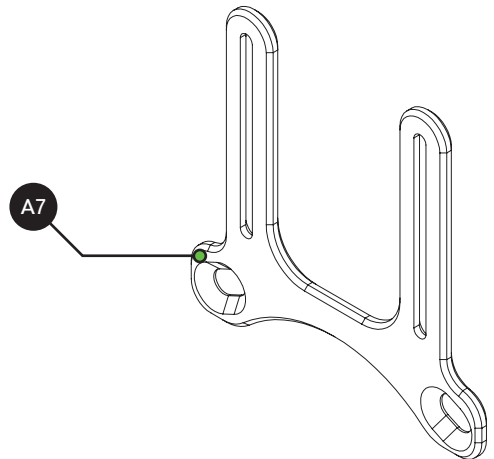
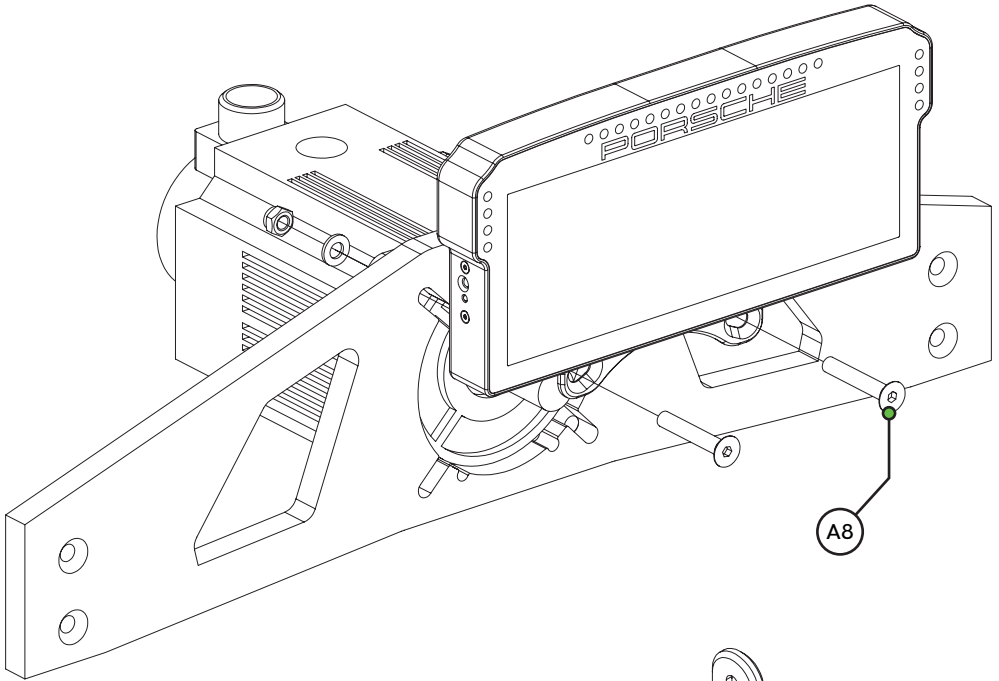
Mounting the dash

To be able to mount the dash on the hardware of your choice, we provide several mounting brackets. Which ones you have received may depend on your purchase and may be different from the following ones we show. However, mounting is all more of the same. With the instructions for the two included brackets, you should be able to mount any specific ones for your hardware.



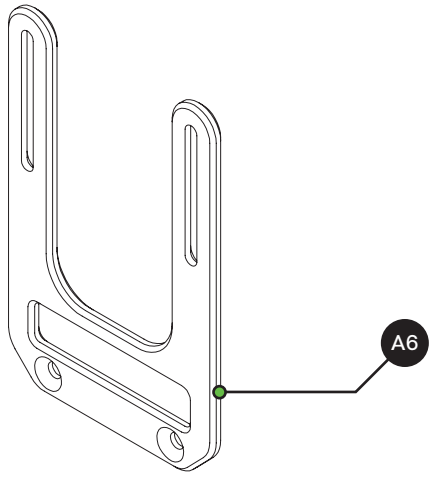
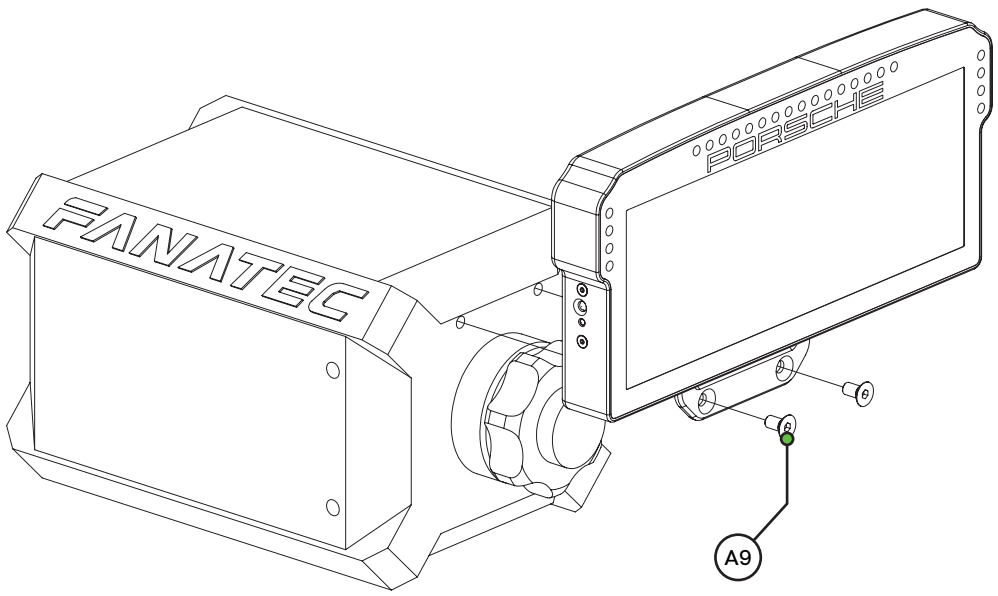
OSW/SC/VRS

Replace the existing upper bolts which hold the motor in place with the countersunk ones included (A8). Use these bolts, including existing washers and locknuts to fix the mounting bracket to the front mount.



Fanatec DD1/DD2

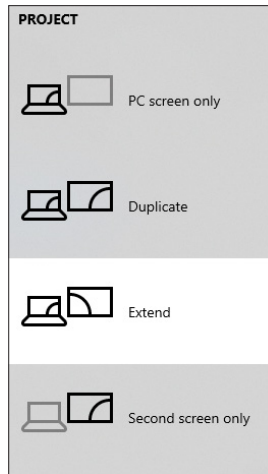
Locate the accessory mounting holes on your Fanatec hardware and use the two bolts (A9) from our supplied hardware kit.



Preparation

This dash isn't just any dash, it's an actual monitor! That means running a dashboard on it almost couldn't be easier and is almost literally, plug and play.

Just be sure to 'extend' from your desktop. Press 'windows-key'+p and press 'Extend', now you can use the dash as a monitor. On to RaceDirector.



RaceDirector installation

To control the dash, RaceDirector can be used. This is a simple but effective piece of software, purpose built for our own hardware.

Download the latest version of RaceDirector from:

<http://www.grid-engineering.com/srd-setup>

Please review the manual found at:

<http://grid-engineering.com/srd-manual>

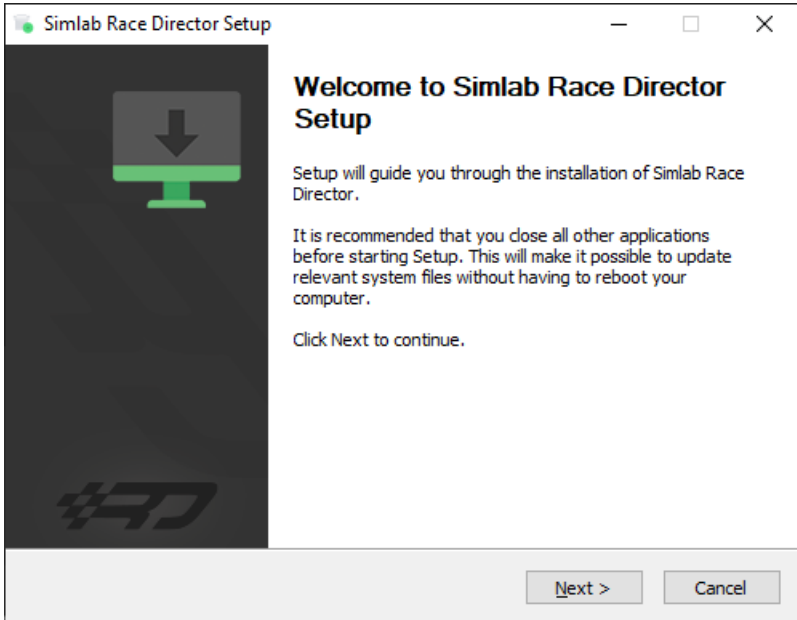
For more advanced users, SimHub can also be used, but this manual will focus on our own software.

Download the latest version of SimHub from <https://simhubdash.com>

Installation

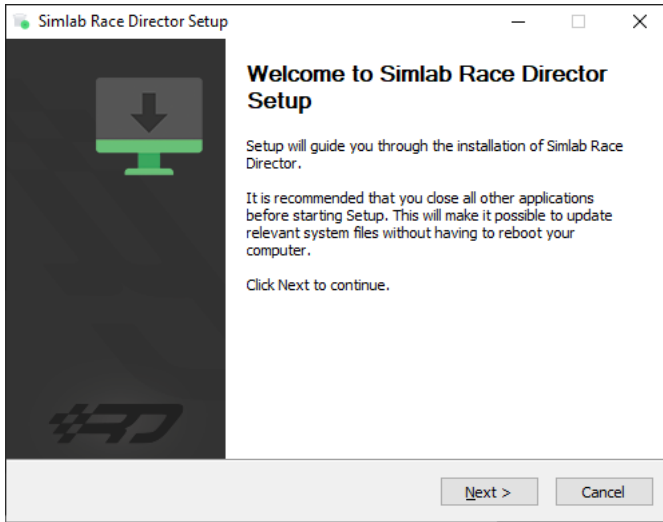
Unzip the downloaded file 'RaceDirector.zip' and extract the folder to a location of your choice, run the installer to start the installation.

If you encounter a Windows Defender/Smart Control screen warning you of only software of trusted sources, please press 'Run anyway'. This warning will disappear when more and more people start using RaceDirector and the software has been proven safe for use.



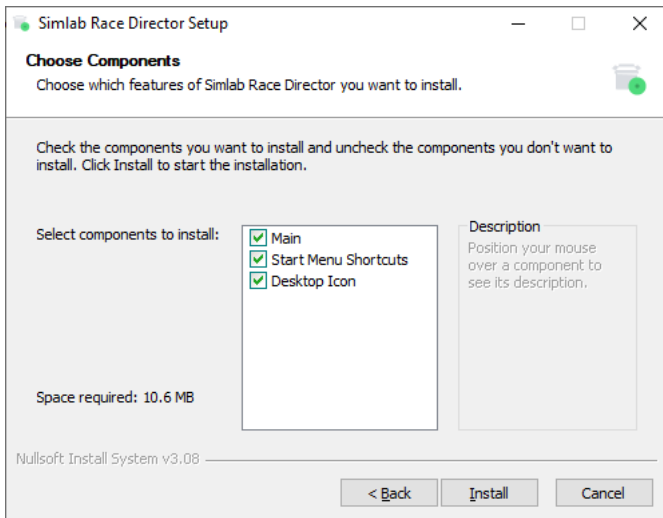
Press 'Next'.

Specify the location where to install the software:



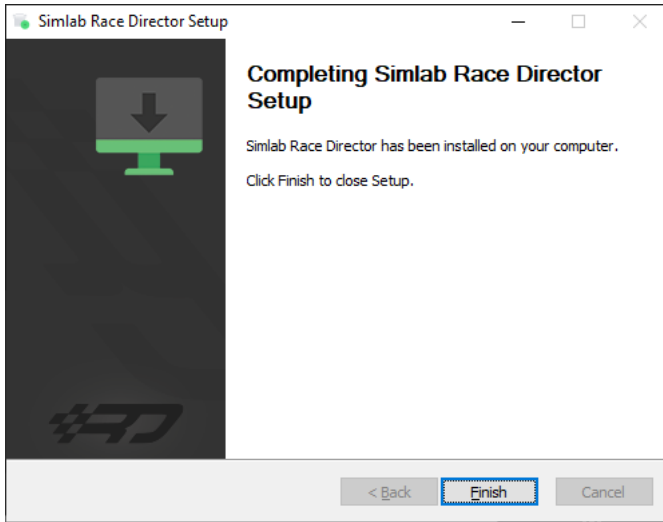
Press 'Next'.

Make sure all options are checked:



Press 'Install'.

RaceDirector will be installed:

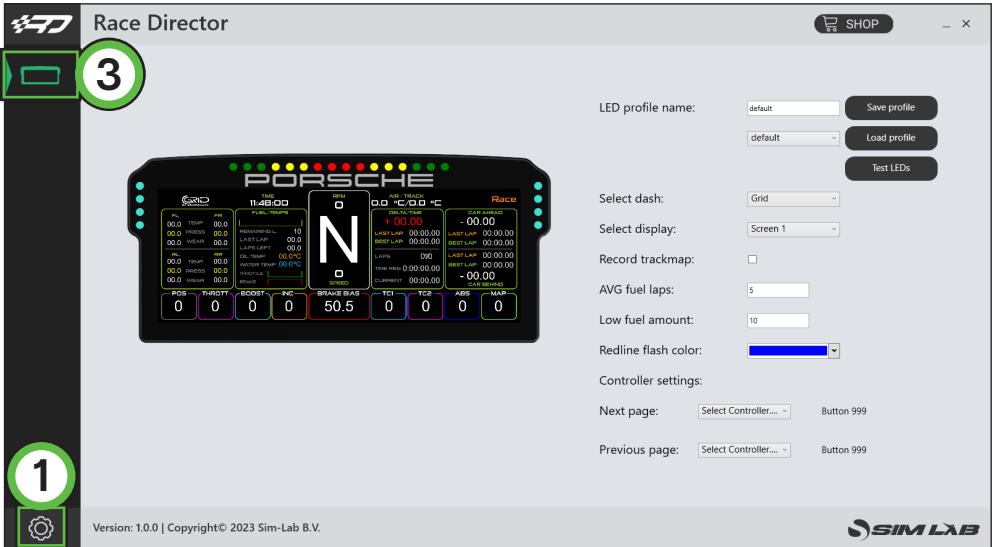


Press 'Finish'.

RaceDirector configuration

The very first time launching RaceDirector, you will probably be greeted with an empty screen and booting might also take a bit longer than you would expect.

Don't worry, this is normal, some additional files might be downloaded/updated. To keep things visually clear and clutter free, we only want to show the options you actually need.



Press the 'Gear' (1) symbol to enter the settings page. To keep the interface clutter free, the device(s) you own need to be activated.

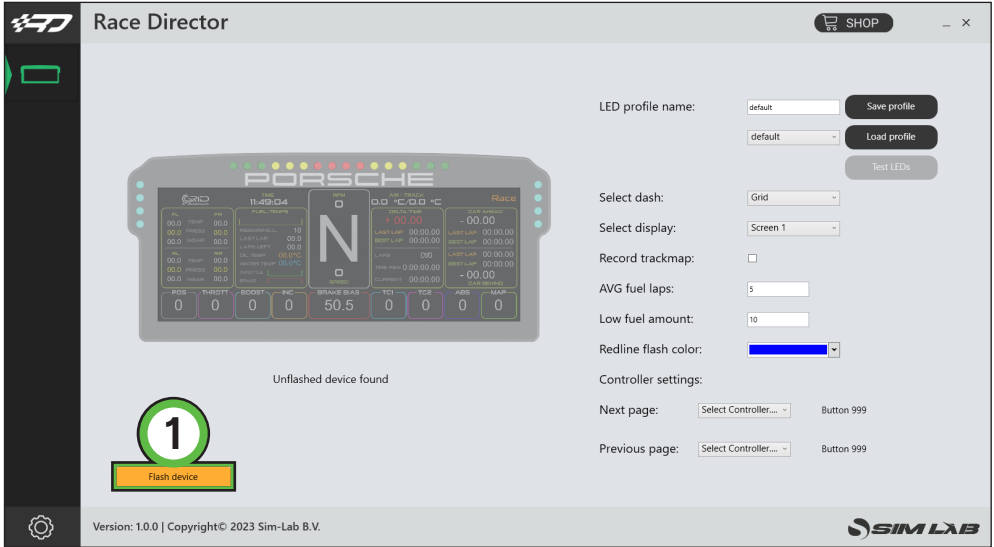
In this case we tick the box for the 'Porsche 911 GT3 Cup Display Unit' (2).

The 'device icon' (3) is activated now and once we press it, the device page will be shown.



Firmware

We recommend to make sure your device has been flashed with the latest firmware. If you do NOT see orange the 'Flash device' (1) button, you are good to go. If you do see this button, press it and follow instructions on screen.

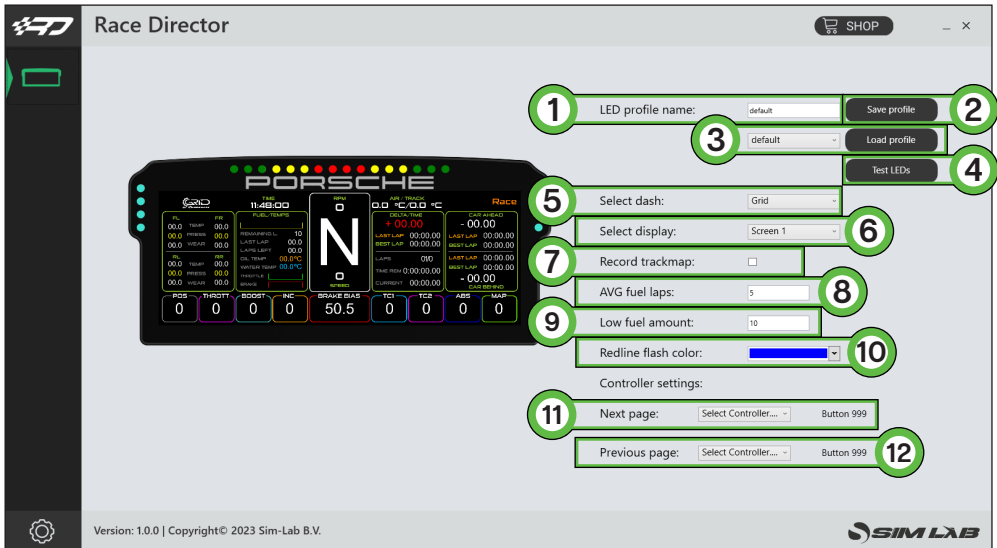


The screenshot shows the Race Director software interface. At the top left is the 'Race Director' logo. On the right, there is a 'SHOP' icon and window controls. The main area displays a Porsche dashboard with various metrics like speed (1149.04 km/h), gear (N), and lap times. Below the dashboard, the text 'Unflashed device found' is visible. A large green circle with the number '1' is overlaid on the interface, with a yellow button labeled 'Flash device' below it. On the right side, there are several configuration options: 'LED profile name' (default), 'Select dash' (Grid), 'Select display' (Screen 1), 'Record trackmap' (checkbox), 'AVG fuel laps' (5), 'Low fuel amount' (10), 'Redline flash color' (blue), and 'Controller settings' (Next page: Select Controller..., Button 999; Previous page: Select Controller..., Button 999). At the bottom left, there is a gear icon and the text 'Version: 1.0.0 | Copyright© 2023 Sim-Lab B.V.'. At the bottom right, the 'SIM LAB' logo is present.

Configuration and settings

Almost all of the options found here speak for themselves, though for the sake of being complete, we will go over them on by one.

For more detailed information about the functionality we offer within RaceDirector, please read the [RaceDirector manual](#). We go into more detail in there, as we prefer to keep the product manuals as easy to read as we possibly can.



- 'LED profile name' (1)

This serves two purposes in one. Firstly the name of the loaded profile is noted to verify that the profile has been loaded. Secondly the name is used when saving the profile.

- 'Save profile' (2)

When you want to save an existing profile, press this button. You will be warned that the profile is an existing profile, thus overwriting it will change it from the default settings. Alternatively, once the profile name (see above) has been changed, that name will be used as the new profile name.

- 'Load profile' (3)

This loads the selected profile in the drop down menu.

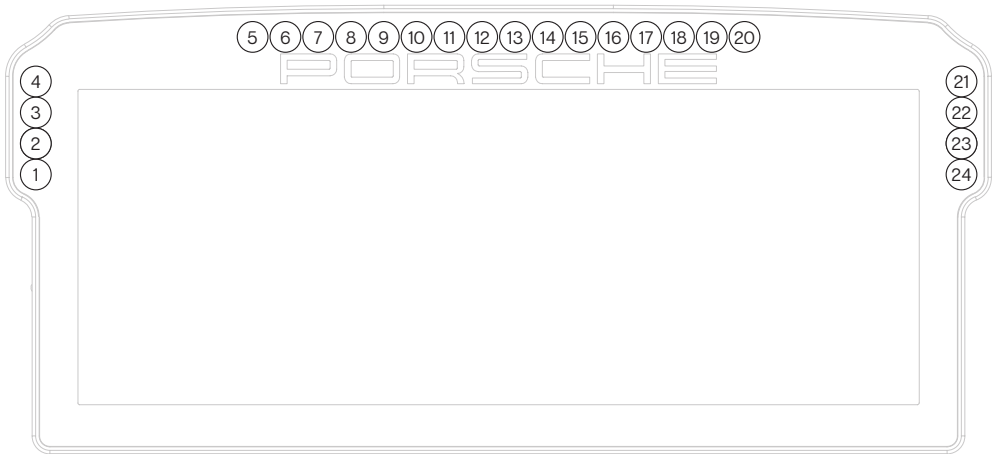
- 'Test LEDs' (4)
This opens up a pop-up window where you use test input to see what the LEDs do using the currently loaded profile.
- 'Select dash' (5)
This allows you to select a standard dash for a given car. We do not support all cars in every sim. The chosen dash will also be visually shown on the visual representation of the hardware.
- 'Select display' (6)
This will make sure the chosen dash is rendered on the correct screen. If you don't get any picture, be sure to follow the instructions on Page 6 of this manual.
- 'Record trackmap' (7)
This will allow you to record a trackmap of the track you are driving. This will be used by dashes which have a GPS page where you can track the positions of drivers on track. When no data has been recorded, the track will be rendered as a simple loop. Stop short of start/finish on track, tick the tickbox and drive a lap in the middle of the track with a constant speed. After start/finish the record function is automatically disabled, the track will display as recorded on the appropriate page(s).
- 'AVG fuel laps' (8)
This value determines how many laps are used to calculate average fuel usage. The average is reset every time you enter the pits to keep the average a meaningful number.
- 'Low fuel amount' (9)
This number (in liters) will be used for the dash to know when to activate the 'Low Fuel' function, alarm or warning.
- 'Redline flash color' (10)
You can pick the color when you reach the redline or optimal shift point. Right now this is preset at a standard 95%.

- 'Next page' (11)
Cycle to the next page of the loaded dash. Select a controller of your choice, press 'Select button' and you have about 10 seconds to press the button you want to use.
- 'Previous page' (12)
Cycle to the previous page of the loaded dash, works like described above.

Note: when the page controls are configured, they won't affect a dashboard *unless* a sim is running.

LED settings

The LEDs can be changed by simply pressing the LED to be changed and changing its function or color. Here is the LED numbering for reference.



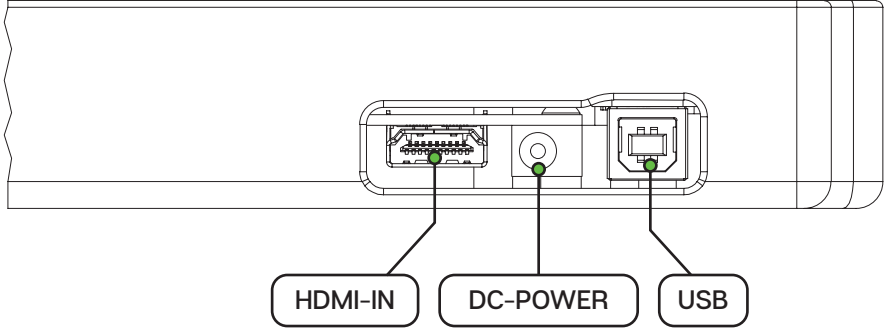
There should be enough info in the provided default LED profiles to be able to adjust LED settings to your liking. To start building your own profile, we suggest to copy an existing one and change where needed. The advantage is you always have a backup of the default profile to fall back to.

We do recommend to read the [RaceDirector manual](#) for detailed information on functions, settings and basic rules for the LED settings.

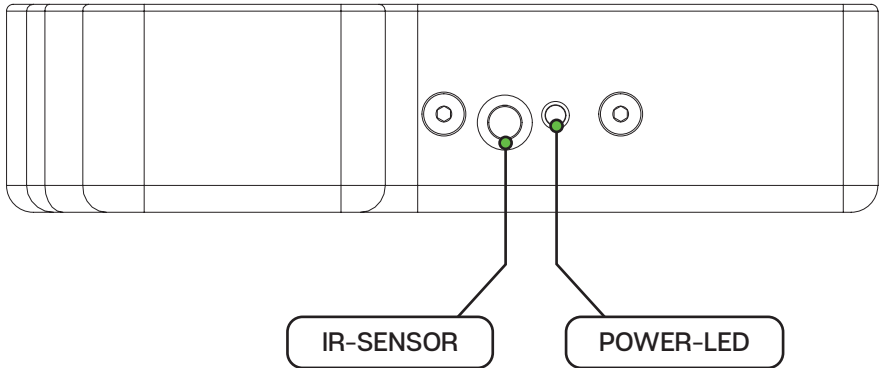
Inputs and indicators

Since this dash is a bit more involved than our usual products, we will show the layouts for the input and indicator sections of the dash.

Bottom - Inputs



Side - Indicator LEDs



Bill of materials

IN THE BOX			
#	Part	QTY	Note
A1	Porsche 911 GT3 Cup DDU	1	
A2	USB B cable	1	
A3	HDMI cable	1	
A4	Remote control	1	
A5	DC power supply	1	
A6	Bracket Fanatec DD1/DD2	1	
A7	Bracket OSW/SC/VRS	1	
A8	Bolt M8 X 50 DIN 7991	2	
A9	Bolt M6 X 12 DIN 7991	2	Used with Fanatec.
A10	Bolt M5 X 10 DIN 7991	2	To fit mounting bracket to dash.

More information

If you still have some questions regarding assembly of this product or about the manual itself, please refer to our support department. They can be reached at:

support@grid-engineering.com

Alternatively, we now have Discord servers where you can hang out or ask for help.

www.grid-engineering.com/discord

[Product page on the
GRID Engineering website:](#)

