

### Step 1 What's in the box



#### What's in the box.

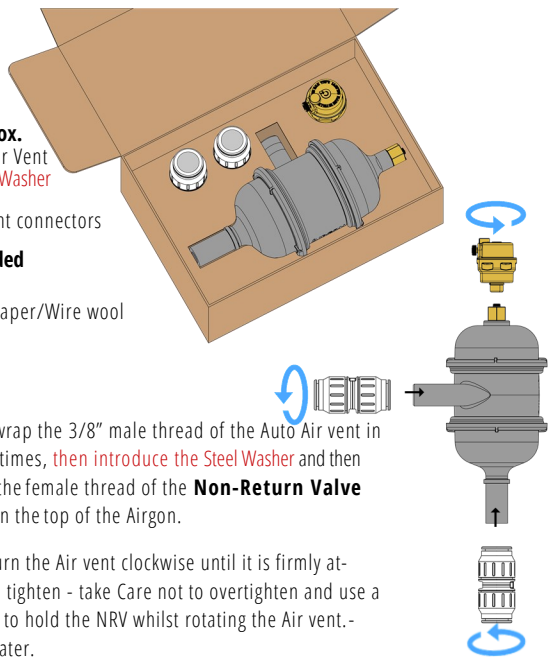
- 1 x Brass Auto Air Vent
- 1 x Stainless Steel Washer
- 1 x Airgon A22
- 2 x 22mm straight connectors

#### Equipment needed

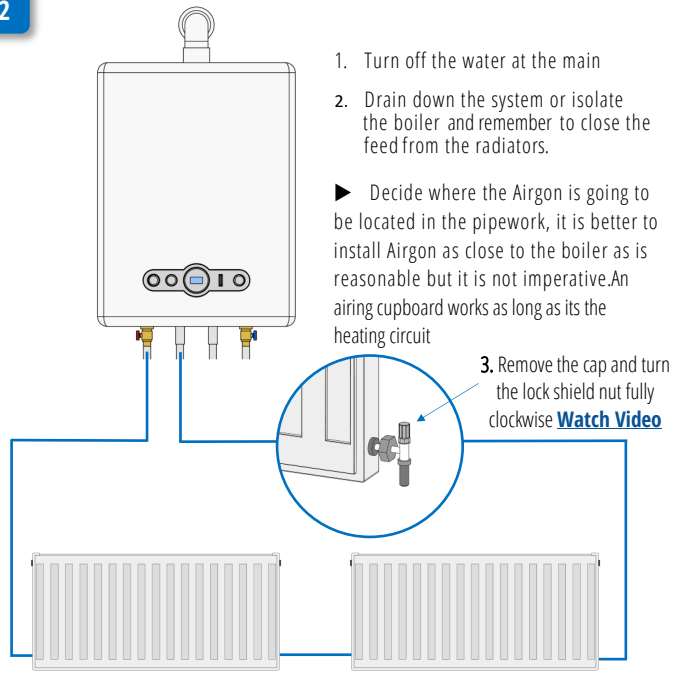
- Pipe cutting tool
- Small Grit Sandpaper/Wire wool
- PTFE tape
- Kitchen roll
- Bucket or Tray

▶ Carefully, wrap the 3/8" male thread of the Auto Air vent in PTFE tape a few times, then introduce the Steel Washer and then the Air vent into the female thread of the **Non-Return Valve (NRV)** located in the top of the Airgon.

▶ Carefully turn the Air vent clockwise until it is firmly attached and hand tighten - take Care not to overtighten and use a spanner or grips to hold the NRV whilst rotating the Air vent. - You can do this later.



### Step 2 Before you cut into Pipework

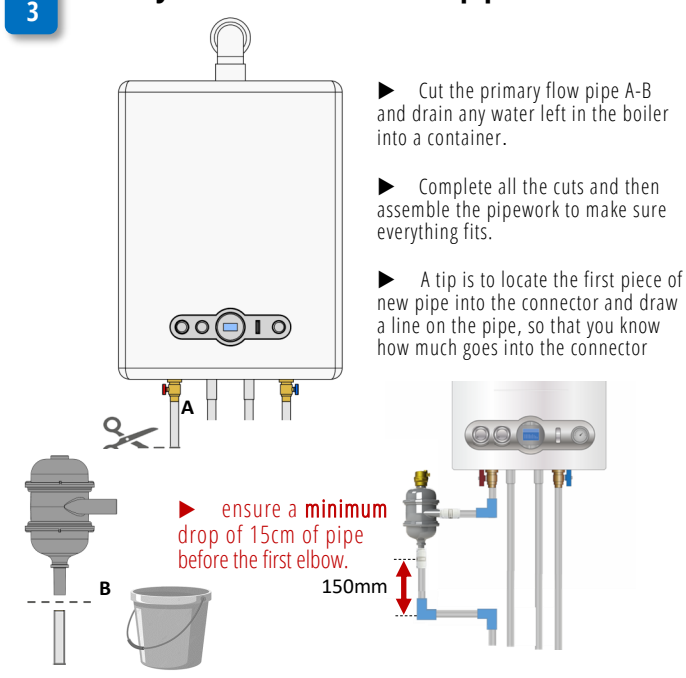


1. Turn off the water at the main
2. Drain down the system or isolate the boiler and remember to close the feed from the radiators.

▶ Decide where the Airgon is going to be located in the pipework, it is better to install Airgon as close to the boiler as is reasonable but it is not imperative. An airing cupboard works as long as its the heating circuit

3. Remove the cap and turn the lock shield nut fully clockwise **Watch Video**

### Step 3 Make your first cut across the pipe



▶ Cut the primary flow pipe A-B and drain any water left in the boiler into a container.

▶ Complete all the cuts and then assemble the pipework to make sure everything fits.

▶ A tip is to locate the first piece of new pipe into the connector and draw a line on the pipe, so that you know how much goes into the connector

▶ ensure a **minimum drop of 15cm of pipe before the first elbow.**

150mm

### Step 4 Locate the pipework into the connectors

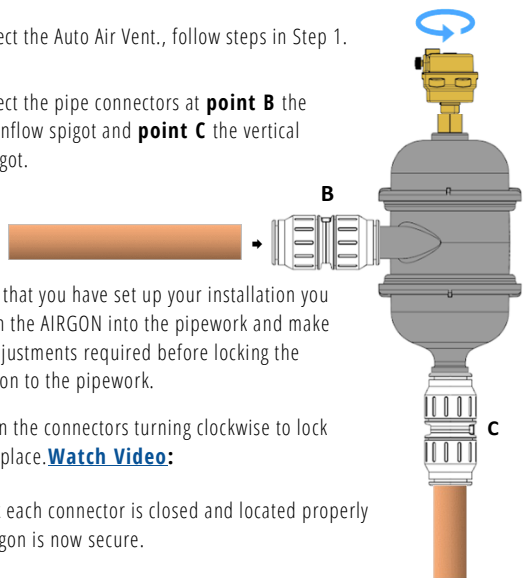
▶ Connect the Auto Air Vent., follow steps in Step 1.

▶ Connect the pipe connectors at **point B** the horizontal inflow spigot and **point C** the vertical outflow spigot.

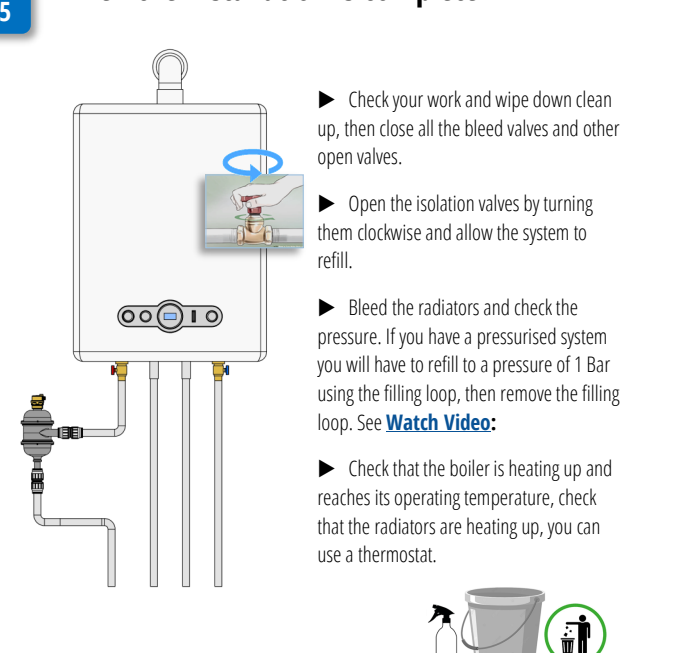
▶ Once that you have set up your installation you can position the AIRGON into the pipework and make any final adjustments required before locking the connectors on to the pipework.

▶ tighten the connectors turning clockwise to lock the pipe in place. **Watch Video:**

▶ Check each connector is closed and located properly and the Airgon is now secure.



### Step 5 When the installation is complete



▶ Check your work and wipe down clean up, then close all the bleed valves and other open valves.

▶ Open the isolation valves by turning them clockwise and allow the system to refill.

▶ Bleed the radiators and check the pressure. If you have a pressurised system you will have to refill to a pressure of 1 Bar using the filling loop, then remove the filling loop. See **Watch Video:**

▶ Check that the boiler is heating up and reaches its operating temperature, check that the radiators are heating up, you can use a thermostat.



### Step 6 Airgon starts to work immediately

▶ Loosen the threaded top valve on the Air vent to allow it to continuously vent, listen out for the air leaving the Vent to ensure it's working

▶ Check temperature of the boiler and rads as you may need to turn down the thermostat

▶ As the Air is removed from the system water their may be a drop in pressure. This is easily resolved by topping up the system water.

▶ Check the air vent once a week in the first month in case it gets blocked with debris . Simply Remove it from the NRV and clean it in warm soapy water, rinse clean and reinstate onto the Airgon.

The Airgon is located into a Non-return valve (NRV) for this reason.

**For more comprehensive installation instructions and tips go to the installation page on the website.**





Step 1.

**DO NOT** Tamper with the check valve it has been hermetically sealed into the body of the Airgon. It is not intended to be removed or unscrewed. **This will invalidate the warranty.**



Step 2.

**Before installing the Air vent into the Non return Valve (NRV)** find the small Steel washer make sure the washer is in place and insert it into the NRV



Step 3.

Remove washer from the Airgon Packaging its on sellotape, may be on the side of the Airgon



Step 4.

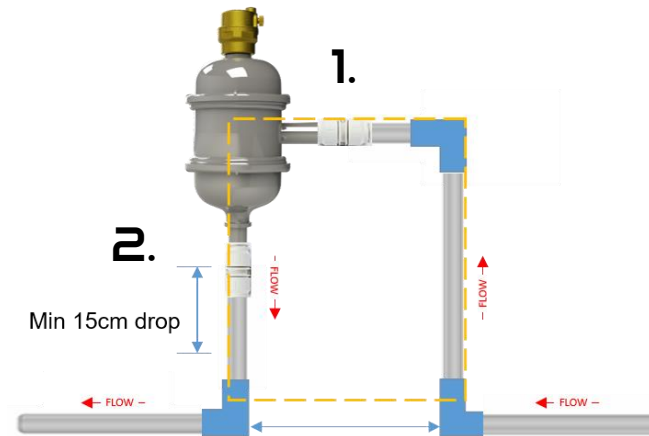
Locate washer to the top of the Non return valve



Step 5.

Ensure its seated correctly before introducing the Auto Air Vent.

The water enters the body of the airgon via a connection to the horizontal inflow **1.** and exits via the vertical outflow **2.** You **must** ensure there is a **minimum drop of 15cms from the centre of the connected JG Speed fit connector to the elbow 3.** this assists the development of the low-pressure zone in the chamber



If you are cutting into a Horizontal pipe, measure the distances including the fittings when seated. This ensures that the installation looks neat and tidy with equal vertical and horizontal distances, and remember the minimum drop of 15cms. This example is 25cms.

