

GRABO FORTIS

...is a high performance, excellent durable homogeneous floor covering with a sophisticated non-directional design.

GRABO FORTIS achieves the highest abrasion wear rating Group T (EN 660) and it's binder content exceeds 55% of the flooring composition, consisting of PVC resin, plasticizers and stabilizers, means Grabo Fortis is a Type I. floor covering (EN ISO 10581)

ABRASION GROUPS

Thickness loss (Δl) in mm | EN 660-1

GROUP T	GROUP P	GROUP M	GROUP F
$\Delta l \leq 0,08$	$0,08 < \Delta l \leq 0,15$	$0,15 < \Delta l \leq 0,30$	$0,30 < \Delta l \leq 0,60$

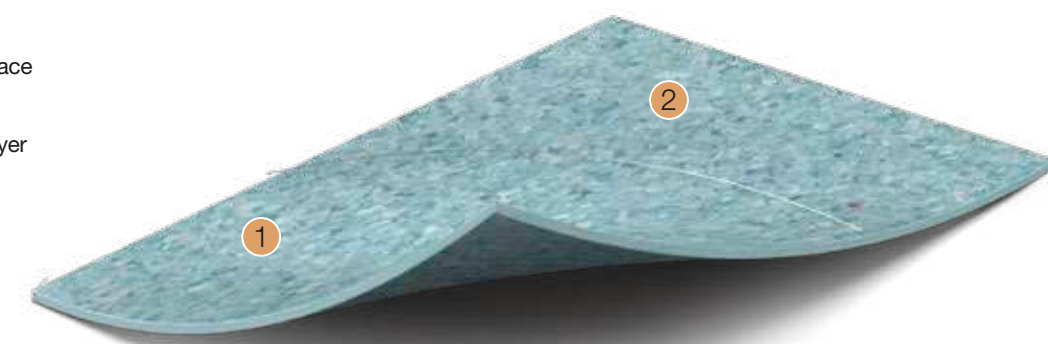
Volume loss (F_v) in mm³ | EN 660-2

GROUP T	GROUP P	GROUP M	GROUP F
$F_v \leq 2,0$	$2,0 < F_v \leq 4,0$	$4,0 < F_v \leq 7,5$	$7,5 < F_v \leq 15,0$

CONSTRUCTIONS

FORTIS

- iGuard PUR Surface
- Non-directional homogeneous layer



Performance features & benefits

- Best dimensional stability
- Excellent abrasion resistance
- Unique non-directional design
- Low residual indentation
- Easy cleaning and maintenance thanks to iGuard PUR Surface
- Anti-bacterial
- Antistatic

Recommended usage

- Healthcare
- Education
- Offices
- Other public areas

Environmental attributes

- Phthalate free
- Solvent free
- Heavy metal free
- 100% recyclable
- NO WAX product
- No waste technology



ECOLOGICAL FORMULA

ENVIRONMENTAL ATTRIBUTES OF GRABO VINYL SHEET FLOORINGS



iGUARD PUR SURFACE

UV cured, cross linked Polyurethane reinforcement which ensures easy cleaning and durability. No additional surface treatment needed for the whole lifetime of the product.

Grabo Fortis specifications

CONSTRUCTION	STANDARDS	FORTIS
DESCRIPTION		
Construction		homogeneous
Binder content	EN ISO 10581	Type I.
Total thickness	EN ISO 24346	2.0 mm
Wear layer thickness	EN ISO 24340	2.0 mm
With of rolls	EN ISO 24341	2 m
Length of rolls	EN ISO 24341	20 lm
Total weight	EN ISO 23997	2.8 kg/m ²
CLASSIFICATION		
European classification	EN 685	class: 34/43
PERFORMANCE		
Abrasion group	EN 660-1	T
Residual indentation	EN ISO 24343	max. 0.1 mm
Dimensional stability	EN ISO 23999	max. 0.2 %
	EN ISO 23999	average 0.1 %
Fire resistance	EN 13501-1	class: Bfl-s1
Slip resistance	DIN 51130	R9
	EN 13893	class: DS
Electrical resistance	EN 1815	< 2 kV
Chemical resistance	EN ISO 26987	✓
Light fastness	EN 20105 B02	grade 6
Castor chair resistance	EN ISO 4918	✓
Seaming method		hot or cold welding
Bacteria and fungi resistance	EN ISO 846:1999	does not favour growth
Warranty		10 year

GRABO

FORTIS



0.1%
AVERAGE
DIMENSIONAL STABILITY
EN ISO 23999



GRABO

FORTIS

Non-directional homogeneous floor covering

GRABO FORTIS

It's not only the size that matters...

BUT OFTENTIMES DIMENSIONAL STABILITY AS WELL...

With the development by Graboplast, GRABO FORTIS products launch a new category in the world of homogeneous floors.



The dimensional stability of homogeneous floors, acc.to EN ISO 23999 standard, is maximum 0.4%. Thanks to our special manufacturing technology, GRABO homogeneous floors change their size on average only by a fourth of this value, compared to the others, therefore they can resist the passing years much better.

Changes in the dimension of the floor coverings might cause gaps alongside the weldings, where *pathogens and contamination* might settle then, making appropriate cleaning and disinfection almost impossible. This is prevented by the new development of Graboplast, which makes maintenance even easier, guaranteeing a trouble-free surface for a long time.

Dimensional stability
EN ISO 23999
maximum: 0.2%
average: 0.1%

GRABO FORTIS

Non-directional homogeneous floor covering

2020/01



GRABOPLAST FLOOR COVERING MANUFACTURERS LTD.
H-9023 Győr, Fehérvári út. 16/b. Telefon: (+36) 96 506-100
www.graboplast.com

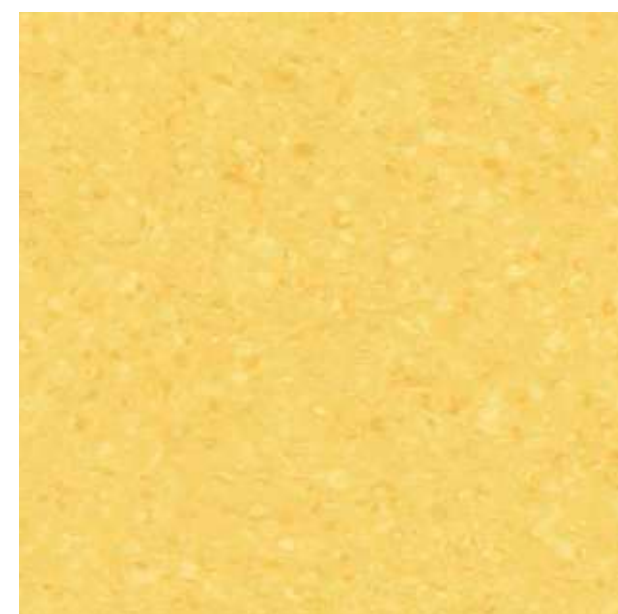


www.facebook.com/graboplast





GRABO
FORTIS



CANARI



CAMEL



GOLD



KORK



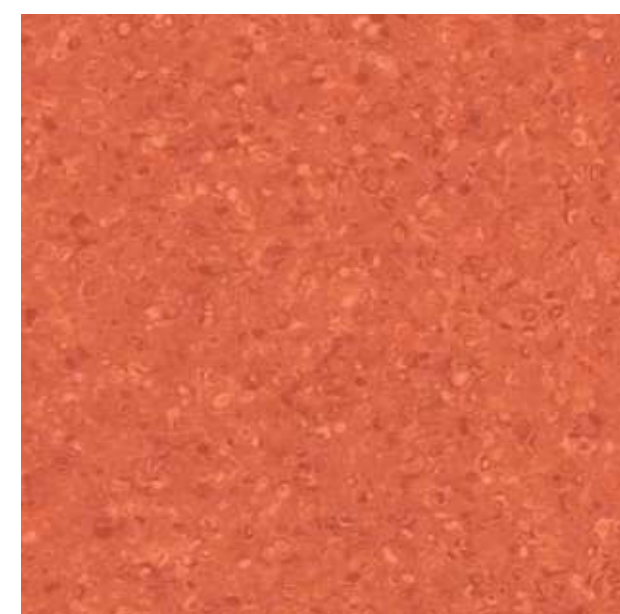
TOBACCO



SAND



ORANGE



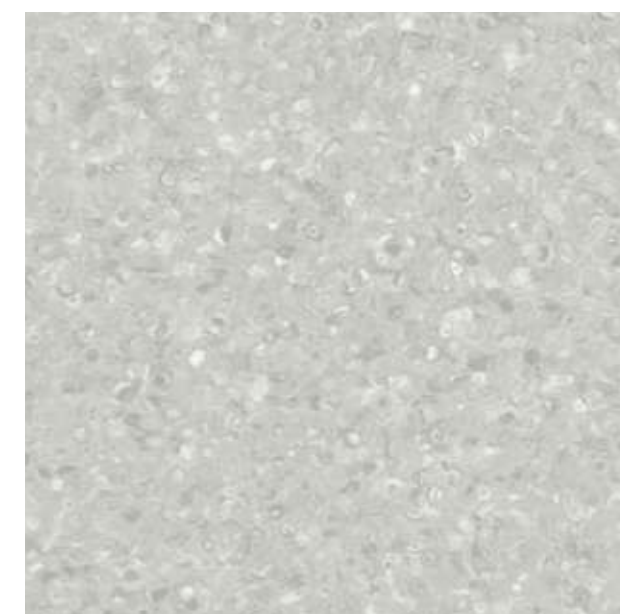
CORAL



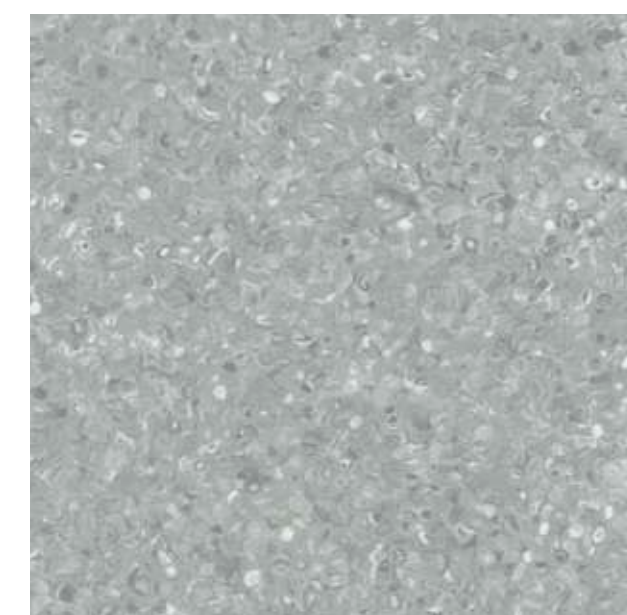
GRABO FORTIS



SILVER



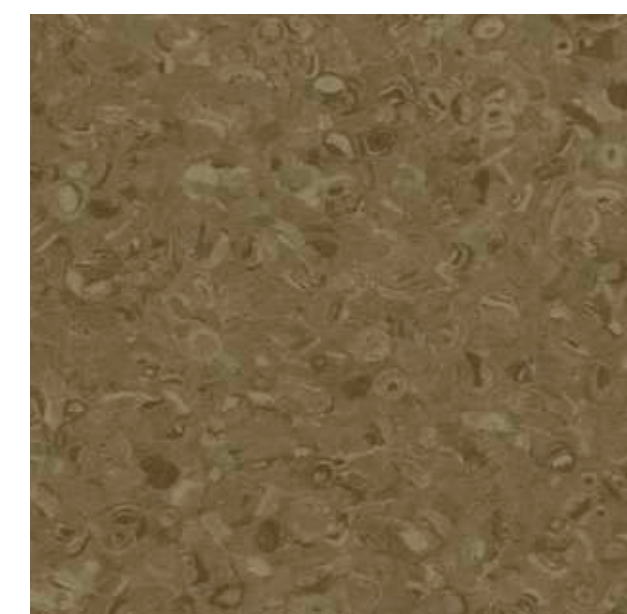
BONE



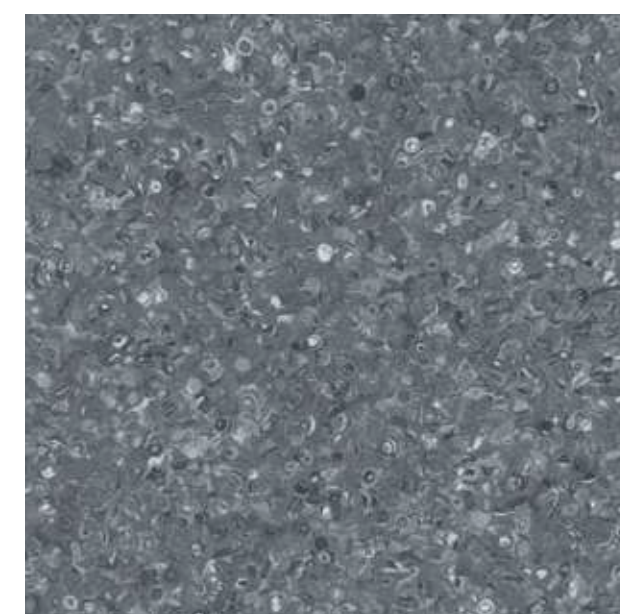
STEEL



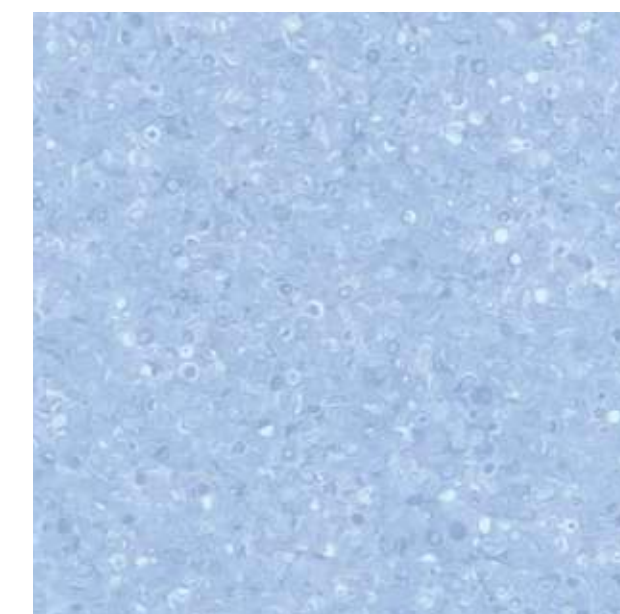
FOG



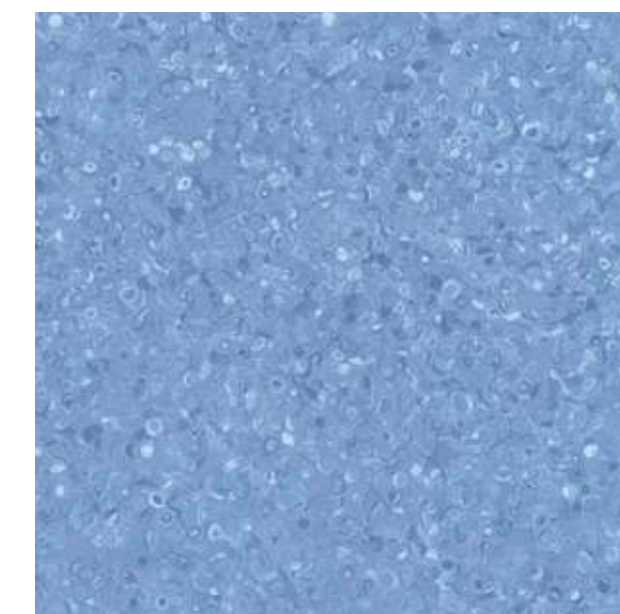
MOCCA



ANTHRACITE



AQUA

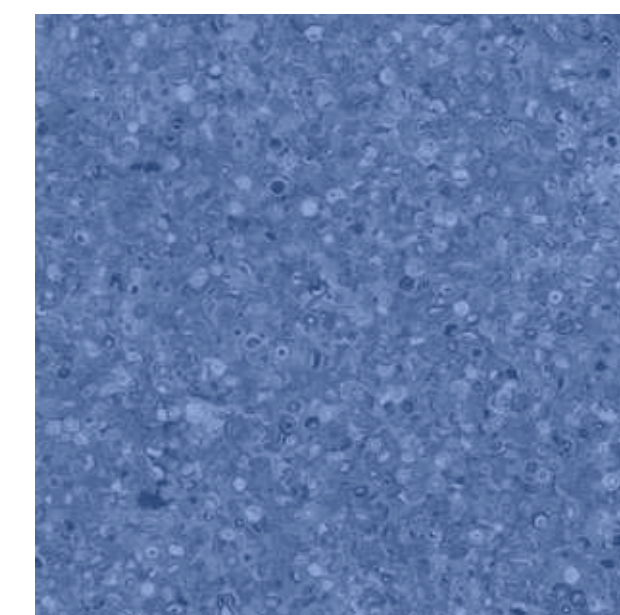


COBALT

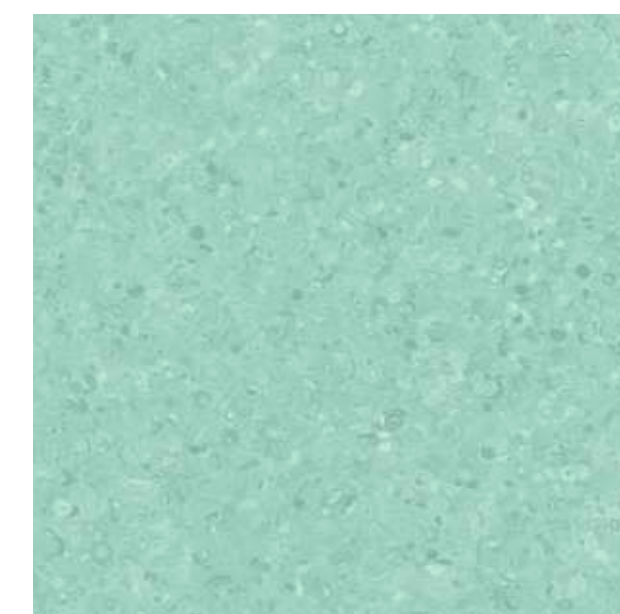
0.1%
AVERAGE

**DIMENSIONAL
STABILITY**

EN ISO 23999



INDIGO



CACTUS



KIWI