

## Product Specifications

**MODEL**  
**VK36**

**CATEGORY**  
Circulation

**DESCRIPTION**

Versa-Kool® 36" direct-drive circulation fan designed for agriculture, horticulture and industrial use.



### FEATURES

- Maintenance-free totally enclosed motor with thermally protected pre-lubricated ball bearings.
- Non-restrictive fan guards and solid high density polyethylene shroud.
- Galvanized fan blade.
- Includes 16" T-shaped powder coated steel mounting bracket.

### DIMENSIONS

A = 37-1/2"    B = 13"    C = 16-1/2"

### PERFORMANCE

CCFM            12,709  
Test Number    Schaefer 0162

### MOTOR

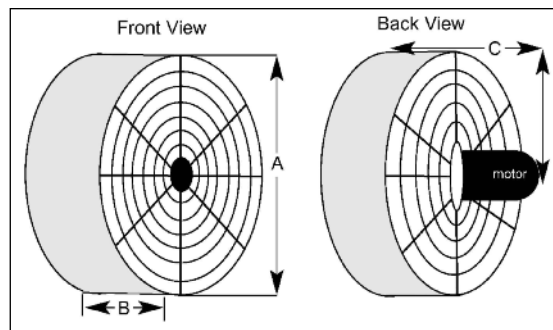
CS802	1/2 HP	1 Speed	60 Hz	1 Phase	115 / 230 Volts
Insul = F	TEAO	825 RPM	SF = 1	Max 40° C	7.0 / 3.5 Amps

### BLADE

GFB-363            3 Wings            5/8" Bore            Galvanized

### SHIPPING

70 lbs            39" x 38" x 17"            UPS = No            Pallet Quantity = 5



**800-779-3267**

sales@schaefervent.com • www.schaefervent.com

*Test data, performance, energy consumption and other specifications are based on results in a controlled environment. Actual results will vary. Product specifications subject to change. ©2011 Schaefer Ventilation Equipment 5-17-11*