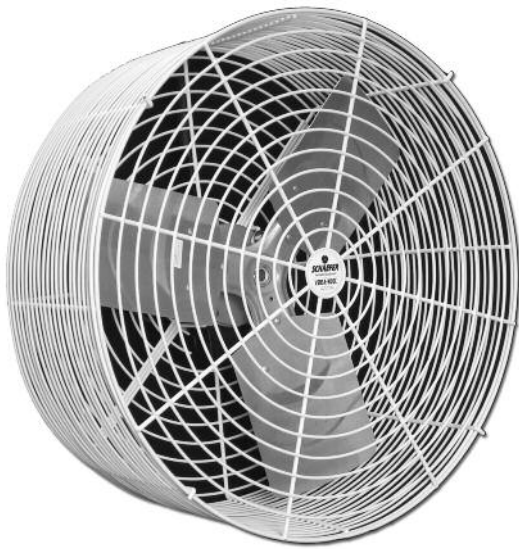


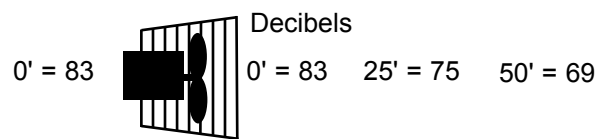
Product Specifications



MODEL
VK24 / VK24-B

CATEGORY
Circulation

DESCRIPTION
Versa-Kool® 24" direct drive variable speed-capable circulation fan designed for agriculture, horticulture and industrial use.



FEATURES

- Maintenance-free totally enclosed motor with thermally protected pre-lubricated ball bearings.
- Non-restrictive *tapered* fan guards are durable powder-coated zinc over steel.
- Includes 10" T-shaped powder coated steel mounting bracket and power cord.
- Aluminum fan blade.

DIMENSIONS

A = 27" B = 11" C = 15-1/2"
D = 10" E = 10"

PERFORMANCE

CCFM	7838	FPM at Face	1838
Test Number	Schaefer 0522	at 25'	829
		at 50'	399

MOTOR

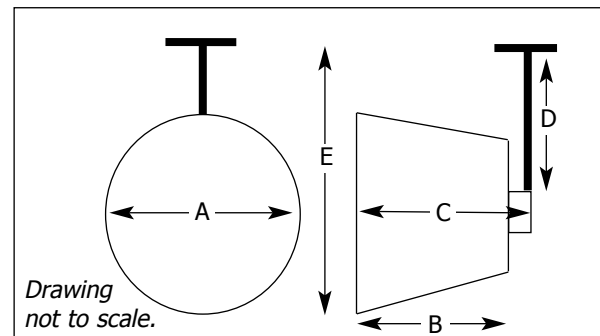
CS102	1/2 HP	1 Speed	1 Phase	SF = 1.0	Max 40° C
Insul = F	60 Hz	1725 RPM	115-230 V	4.8-2.4 A	
TEAO	50 Hz	1425 RPM	220 V	2.4 A	

BLADE

AFB-243SQ	3 Wings	5/8" Bore	Aluminum
-----------	---------	-----------	----------

SHIPPING

46 lbs	27" x 27" x 18"	UPS = Yes	Pallet Quantity = 16
--------	-----------------	-----------	----------------------



800-779-3267

sales@schaeferfan.com • www.schaeferfan.com

Test data, performance, energy consumption and other specifications are based on results in a controlled environment. Actual results will vary. Product specifications subject to change. ©2012 Schaefer Ventilation Equipment 7-19-12