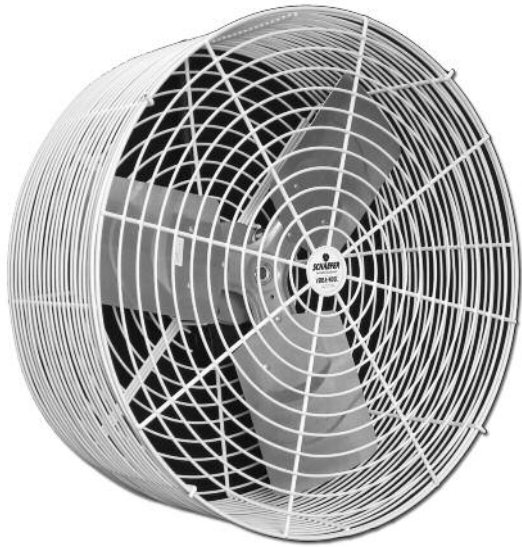


Product Specifications



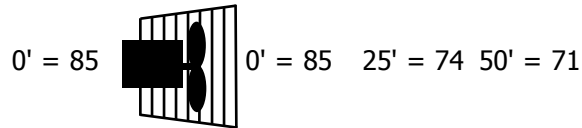
MODEL
VK20 / VK20-B / VK20-GA

CATEGORY
Circulation

DESCRIPTION

Versa-Kool® 20" direct drive variable speed-capable circulation fan designed for agriculture, horticulture and industrial use.

Decibels



FEATURES

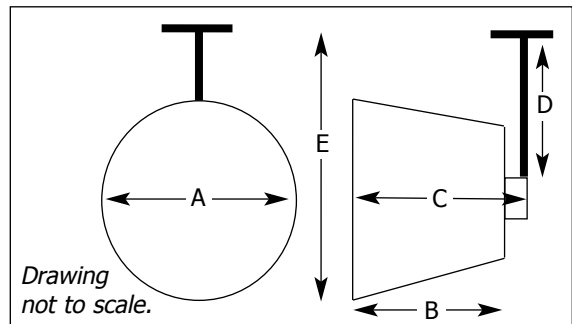
- Maintenance-free totally enclosed motor with thermally protected pre-lubricated ball bearings.
- Non-restrictive *tapered* fan guards are durable galvanized or powder-coated zinc over steel.
- Aluminum fan blade.
- Includes 8" T-shaped powder coated steel mounting bracket and power cord.

DIMENSIONS

A = 23" B = 10-1/2" C = 14-1/2"
D = 8" E = 23"

PERFORMANCE

CCFM	5517	FPM at face	1738
Test Number	Schaefer 0523	at 25'	549
		at 50'	309



MOTOR

CS103	1/3 HP	1 Speed	60 Hz	1 Phase	115 / 230 Volts
Insul = F	TEAO	1725 RPM	SF = 1	Max 40° C	3.8 / 1.9 Amps

BLADE

AFB-203SQ	3 Wings	1/2" Bore	Aluminum
-----------	---------	-----------	----------

SHIPPING

37 lbs	23" x 23" x 18"	UPS = Yes	Pallet Quantity = 16
--------	-----------------	-----------	----------------------



800-779-3267

sales@schaeferfan.com • www.schaeferfan.com

Test data, performance, energy consumption and other specifications are based on results in a controlled environment. Actual results will vary. Product specifications subject to change. ©2012 Schaefer Ventilation Equipment 7-24-12