



□ **G1998** Safety Station with WideArea™ Eye/Face Wash, All-PVC Construction

Application: All-PVC combination WideArea™ eye/face wash and shower safety station. Unit is constructed entirely of PVC and PVC-coated components for superior corrosion resistance. Ideal for industrial environments where harsh acids or caustics are present. Eye/face wash features four GS-Plus™ spray-type outlet heads that deliver a flood of water over a wide area of coverage for complete rinsing of eyes and face.

Shower Head: 10" diameter orange ABS plastic with 20 GPM flow control.

Shower Valve: 1" IPS PVC-coated brass stay-open ball valve. Valve is US-made with chrome plated brass ball and PTFE seals. Furnished with stainless steel actuating arm and 29" stainless steel pull rod.

Spray Head Assembly: Four GS-Plus™ spray heads. Each head has a "flip top" dust cover, internal flow control and filter to remove impurities from water flow.

Eye/Face Wash Bowl: 11-3/4" diameter orange ABS plastic.

Eye/Face Wash Valve: 1/2" IPS PVC-coated brass stay-open ball valve. Valve is US-made with chrome plated brass ball and PTFE seals.

Pipe And Fittings: Schedule 80 PVC.

Supply: 2" IPS socket weld top female inlet.

Waste: 2" IPS socket weld female outlet.

Sign: ANSI-compliant identification sign.

Quality Assurance: Valve and spray head assemblies are factory assembled and water tested prior to shipment.

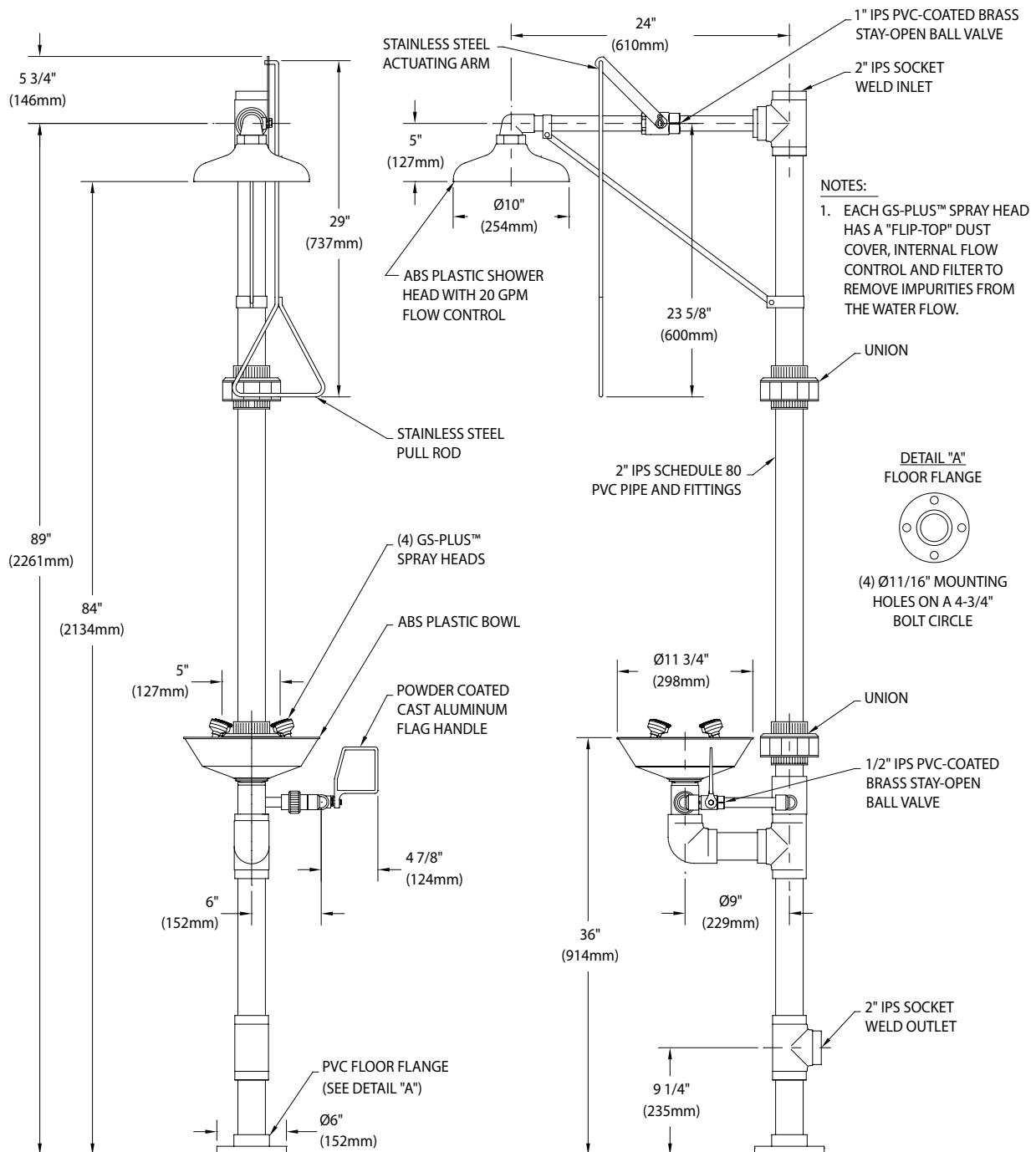
Available Options

- **GRN** Green ABS plastic shower head and bowl.
- **YEL** Yellow ABS plastic shower head and bowl.
- **AP275-200** Electric flashing light and alarm horn unit for mounting on wall or vertical pipe. Light illuminates and horn sounds when eye/face wash or shower is activated. Furnished complete with flow switch and mounting hardware.
- **AP250-015** Modesty curtain for mounting on safety station.
- **G3800LF** Thermostatic mixing valve precisely blends hot and cold water to deliver warm (tepid) water as required by ANSI Z358.1-2014. Refer to "Tempering Valves" section for complete technical and product selection information.





□ G1998 Safety Station with WideArea™ Eye/Face Wash, All-PVC Construction



THIS SPACE FOR ARCHITECT/ENGINEER APPROVAL

Sign Included



Due to continuing product improvement, the information contained in this document is subject to change without notice. All dimensions are ± 1/4" (6mm). rev. 0817

