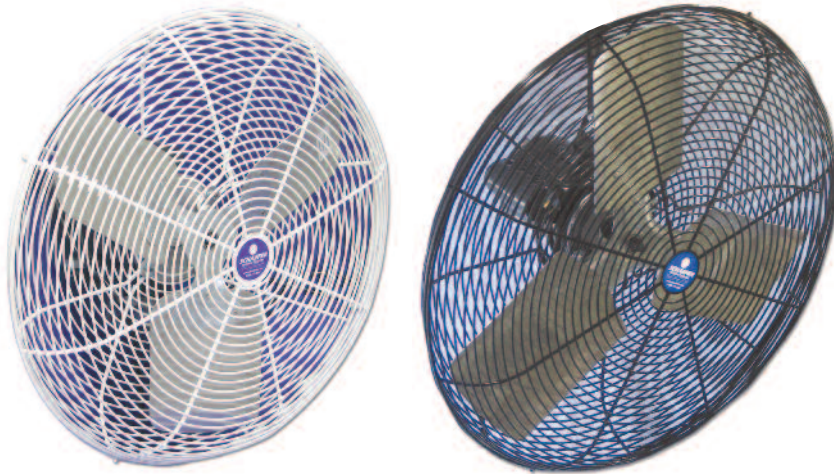


## Product Specifications

**MODEL**  
**20CFO**  
**20CFO-B**

**CATEGORY**  
Circulation

**DESCRIPTION**  
20" circulation fan with  
OSHA guards and 2-speed motor  
with pull chain switch,  
designed for agriculture, horticulture  
and industrial use.



### FEATURES

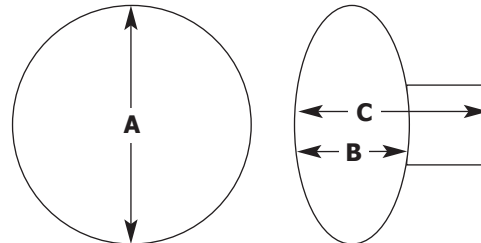
- Maintenance-free, totally enclosed, thermally protected motor with pre-lubricated ball bearings and two-speed pull chain switch.
- Durable powder coated zinc over steel fan guard meets OSHA requirements.
- Includes ten foot, 115 volt power cord.

### DIMENSIONS

A = 22-1/2"    B = 6-1/4"    C = 12"

### PERFORMANCE

CCFM                    3896 / 2857  
Test Number        Schaefer 0101 / Schaefer 0102



*Drawing not to scale.*

### MOTOR

CS240	1/4 HP	2 Speed	60 Hz	1 Phase	115 Volts	2.9 Amps
Insul = B	CSA Certified	TEAO	1100 RPM	SF = 1	Max 40° C	

### BLADE

AFB-2000SQ	3 Wings	1/2" Bore	Aluminum
------------	---------	-----------	----------

### SHIPPING

30 lbs	24" x 23" x 13"	UPS = Yes	Pallet Quantity = 20
--------	-----------------	-----------	----------------------



**800-779-3267**

sales@schaeferfan.com • www.schaeferfan.com

*Test data, performance, energy consumption and other specifications are based on results in a controlled environment.  
Actual results will vary. Product specifications subject to change. ©2010 Schaefer Ventilation Equipment 5-16-12*