

CT Race Worx – Maverick X3 Rock Slider/Nerf Bar Installation Instructions

1. Mark locations for drilling through plastics. There are dimples in the plastic to assist locating.
(Pics 1-3)
2. Using a 1 7/8" hole saw, drill the lower holes first. (For the lower holes, line up the bottom of the hole saw so that it barely skims the bottom of the plastic (Pics 4 – 7)
3. On the inside of the vehicle, you will find the "knock out" which will need to be cut out to access the inner frame rail. (Pic 8 – 9) *This will be easier with the seat fully forward.
4. For the final hole, you will need to make a mark 3/16" back and 1/2" up from the factory dimple.
(This position works for most models with no issues) An alternative method is to use a straightened section of wire coat hanger. Heat the end and poke through the plastic from the inside out. (Pics 10 – 12)
5. You are now ready to install the sliders. Using the supplied hardware, loosely attach the rear two mounting points from the inside of the car. (Pic 13)
6. The front bolt will need to be inserted through the slot in the skid plate. This can sometimes be a pain in the ass but it is not impossible.
7. Once all three bolts are inserted, tighten all three by hand to a good snug fit. Do not use power tools or over tighten by hand because you can begin to crush the frame tube.
8. Repeat steps 1 – 7 on the other side of the vehicle.
9. You are ready to ride!



Pic 1



Pic 2



Pic 3



Pic 4



Pic 5



Pic 6



Pic 7



Pic 8



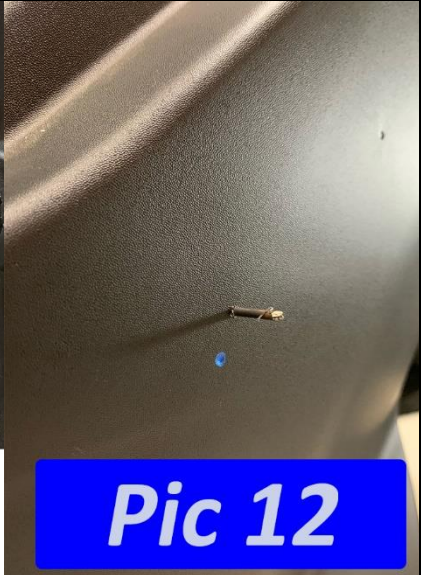
Pic 9



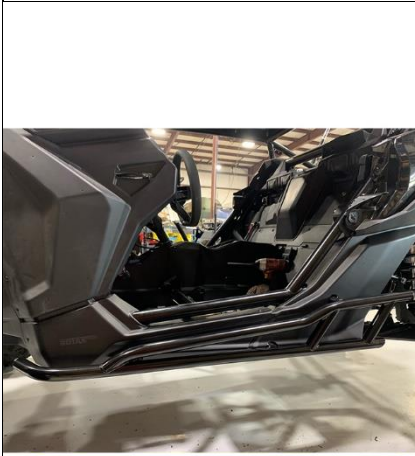
Pic 10



Pic 11



Pic 12



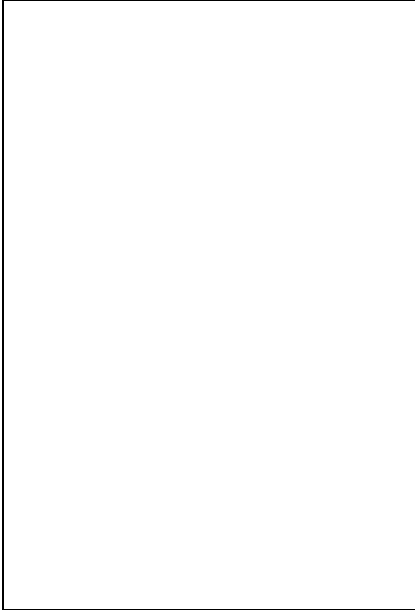
Pic 13



Pic 14



Pic 15



Pic 16