

CT Race Worx – Maverick X3 Radius Rod Race Plate Installation Instructions

1. Lift vehicle off ground and support with proper jack stands on level surface
2. Remove rear wheels
3. Remove the six (6) nuts holding the factory rear plate on
4. Once nuts are removed, pull factory plate off (**Use caution, radius rods are under tension)
5. With the factory plate removed, the radius rods should slide off of the factory studs (*You may need to lift the trailing arms slightly to take weight off of the radius rods)
6. If you are replacing the factory radius rods, unbolt them from the knuckle and replace with your CT Race Worx High Clearance Billet Radius Rod Kit (If keeping factory rods, leave them attached to knuckle and allow them to droop out of the way)
7. Use the provided template with the factory studs to mark holes for drilling. Use 1/8" bit for pilot, 1/4" bit for final.
8. Now it is time to cut the factory studs off. You should cut them as short as possible without risking any damage to the chassis. (If you nick or rub the chassis, paint over bare metal marks to prevent rust)
9. Once studs are cut, reach behind the transmission from each side to remove the remaining factory studs, these can be discarded along with the factory reinforcement plate. The lower-most studs can be removed from underneath the transmission.
10. Insert the lower-most race plate coming in from under the transmission. Use your hand or a screwdriver to move the plate close enough to hand start the new radius rod bolt (6 – 12mm x 70mm flange head screws provided) on each side. You can then use the flange bolts to pull the race plate forward against the chassis to get your 1/4"-20 bolts started to hold the plate in place.
11. Install the middle and top radius rod race plates in the same fashion working up from bottom to top. Once all three plates are in place and the 1/4"-20 bolts are snug to hold the plates in place, remove the 12mm flange bolts and continue with install below.
12. With all of the radius rod race plates in place, you can now install your CT Race Worx Billet Proof Radius Rod Plate with Tow Ring (purchased separately). Thread the two center bolts by hand to hold the plate in place allowing you to install the upper and lower radius rods first. (Again, lifting up on the trailing arms will make this an easier process)
13. Once you have attached the upper and lower radius rods on each side, you can remove the two middle bolts and attach the middle radius rods.
14. With all rods installed, torque the center two bolts FIRST then alternate between lower and upper bolts as shown in illustration. Torque ALL bolts to 90 ft/lbs!
15. Re-install wheels, torque to SPEC and lower vehicle. You are ready to ride!



Step 2



Step 3



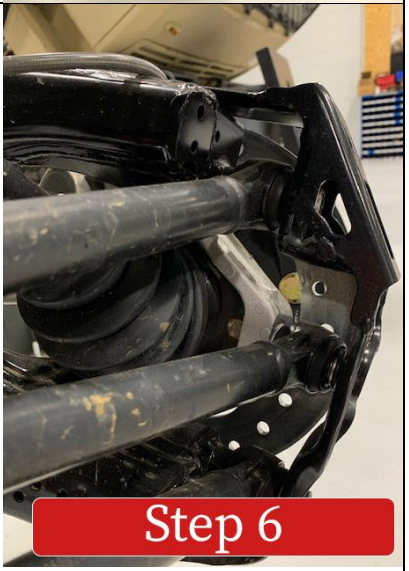
Step 4



Step 4



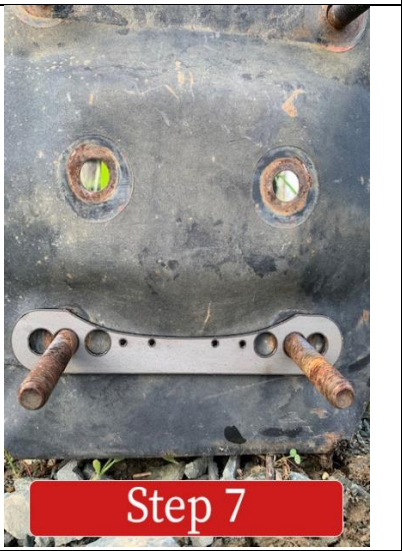
Step 5



Step 6



Step 7

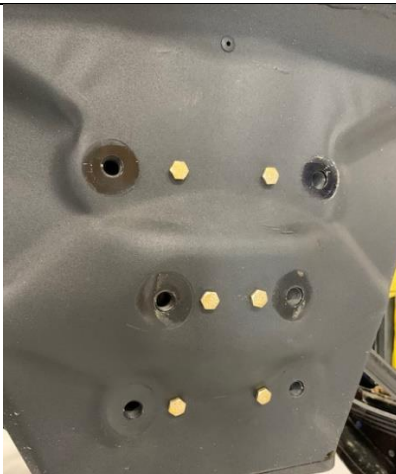


Step 7



Step 7





Step 11



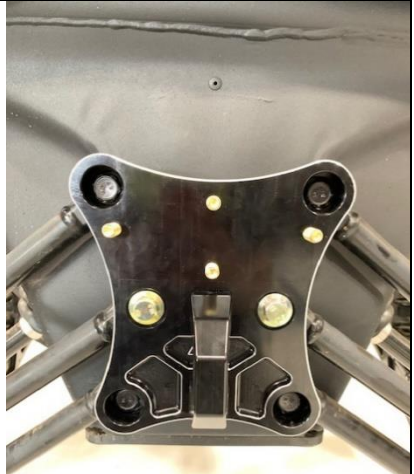
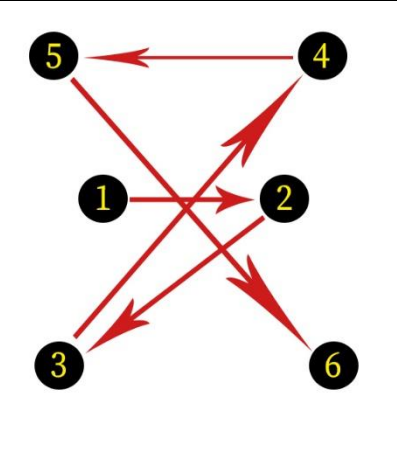
Step 12



Step 12



Step 13



Step 14