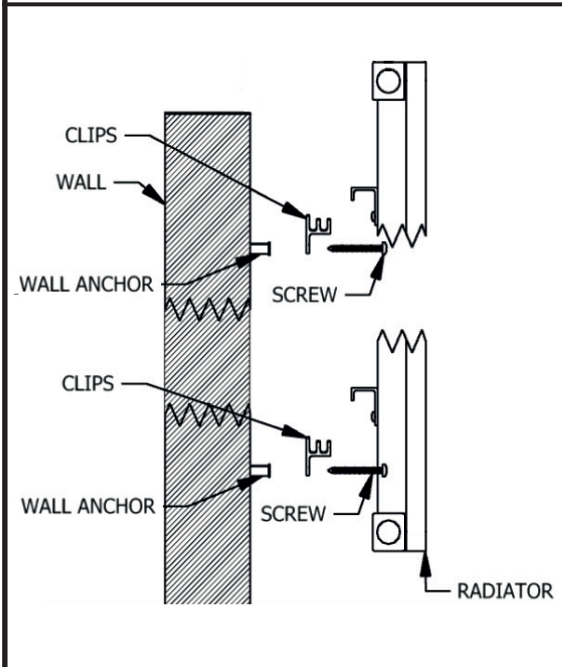
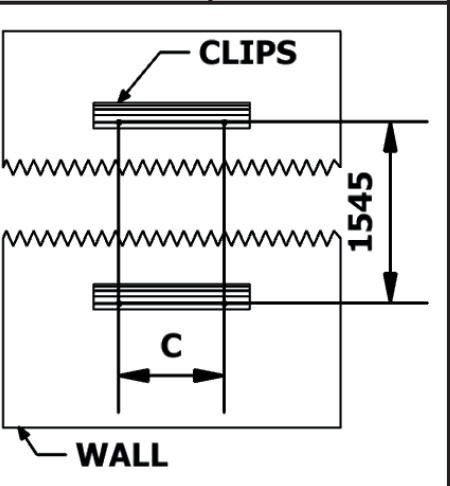
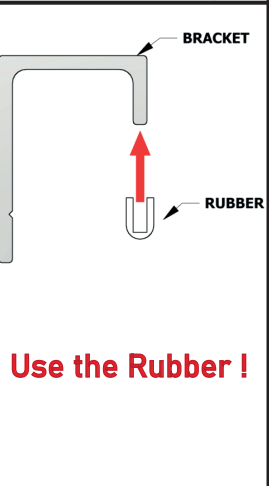
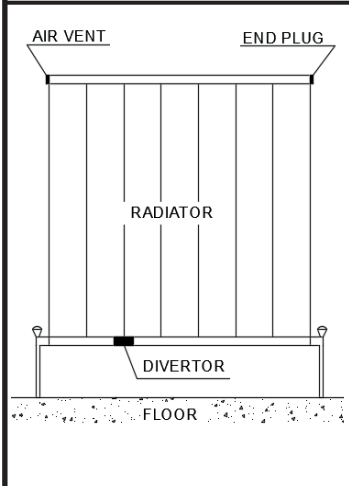
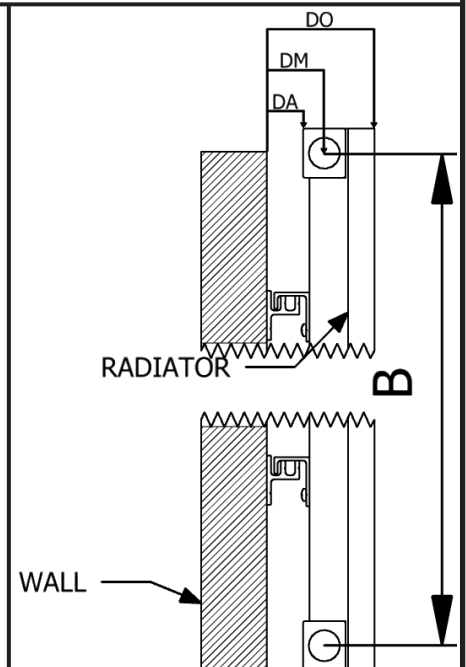
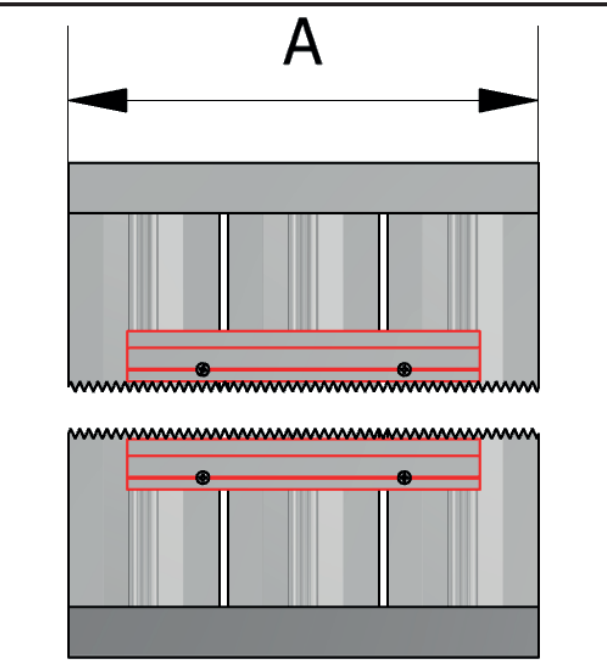


# CASINA INSTALLATION GUIDE

This product must be fitted only by a fully qualified installer.



<b>CLIPS</b> 2 PCS	
<b>WALL ANCHORS</b> 4 PCS	
<b>FIXING SCREWS</b> 4 PCS	
<b>CAP</b> 2 PCS	
<b>END PLUG</b> 1 PCS	
<b>AIR VENT</b> 1 PCS	
<b>RUBBER</b> 2 PCS	



NAMES		A	B	C	TUBE QTY	DA	DM	DO
CASINA (SINGLE)	1800	280	1745	150	3	22	35	65
CASINA (SINGLE)	1800	375	1745	150	4	22	35	65
CASINA (SINGLE)	1800	470	1745	125	5	22	35	65
CASINA (SINGLE)	1800	565	1745	125	6	22	35	65
CASINA (DOUBLE)	1800	280	1745	150	3	26	56	86
CASINA (DOUBLE)	1800	375	1745	150	4	26	56	86
CASINA (DOUBLE)	1800	470	1745	125	5	26	56	86
CASINA (DOUBLE)	1800	565	1745	125	6	26	56	86

## GENERAL RECOMMENDATION

- Before fitting the radiator it is necessary to wash out the heating system to remove any existing mud, scale, work residues, traces of flux, oil, etc.
- When the system water pH is outside the 8,5-5,5 range and/or when the dissolved is above 0,1mg/liter, it is always needed to protect the heating system components (the radiator is one of these) with a proper chemical treatment compatible with all parts in contact with water (silicon rubber too).
- In order to fit the radiator to the wall, it is necessary to choose the proper fixings for the wall material.
- If the system water exceeds 50°C, please install a warning mark near the radiator to avoid any accidental scalding.
- Clean the radiator surface only with a soft cloth to avoid scratching the finish and do not use chemical agents during cleaning operations. It is prohibited to climb on the radiator.
- Maximum working temperature 95°C, maximum working pressure 4 bar.