

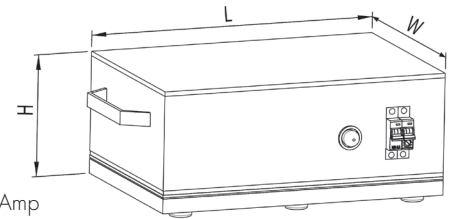
TABLETOP DEMAGNETIZER

EM

Medium-field Demagnetizer for Smaller Components



- Strong AC demagnetizing field on the SS face.
- Best effect is realized by passing small, standard and large components, washers, drill-bits, tools, high speed steel, bearing steel over the surface in a to & fro direction along the length to be repeated as many times as necessary. The size of the unit will determine the component handling ability.
- Auto temperature cut-off when the unit gets heated
- The unit is turned ON & OFF when switch is pressed ON & OFF
- Duty cycle of 50% means that in a 10 minute operation, the unit may be kept ON for 5 minutes but MUST be allowed to cool for 5 minutes. The 100% duty cycle units may be adapted for conveyor belt operations.



Product Code : TD

All dimensions are in mm, Voltage in 'V' AC, Current in 'A' Amp

Model No.	L	W	H	Aperture / Active Surface Dimensions	Duty Cycle D.C (%)	Voltage (Current)	Weight (Kgs)
TD-180	180	127	90	180 X 80	50	110/220 (2.0)	4.0
TD-200	200	150	100	200 x 110	100	110/220 (3.3)	8.5
TD-280	280	200	130	280 x 160	100	110/220 (5.0)	15.0
TD-500	585	335	285	400 x 335	100	220/380/415 (10.0)	69.5

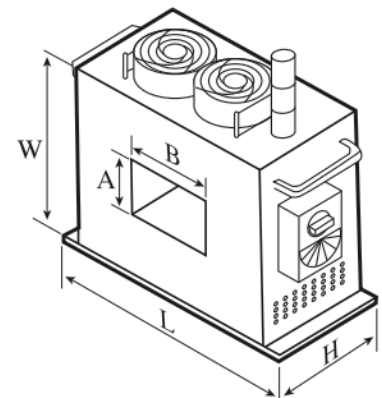
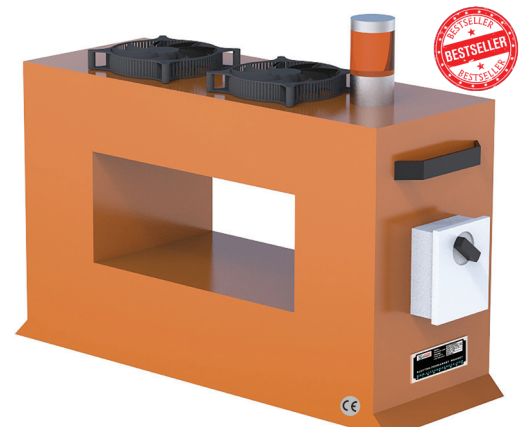
APERTURE DEMAGNETIZER

EM

Medium-field Demagnetizer for Large Volume Smaller Components



- Strong AC demagnetizing field within the aperture window
- Best effect is realized by passing suitably sized components inside the aperture to be repeated as many times as necessary. The size of the unit will determine the component handling ability.
- Auto temperature cut-off when the unit gets heated. Fan mounted to dissipate heat.
- The unit is turned ON & OFF when switch is pressed ON & OFF
- The 100% duty cycle units may be suitably adapted for conveyor belt operations.



Product Code : AD

All dimensions are in mm, Voltage in 'V' AC, Current in 'A' Amp

Model No.	L	W	H	Aperture / Active Surface Dimensions	Duty Cycle D.C (%)	Voltage (Current)	Weight (Kgs)
AD-1015	510	220	475	100 x 150 x 200	50	220/380/415 Single Ph - (5.0)	31.0
AD-1525	610	220	535	150 x 250 x 200	100	220/380/415 Single Ph - (12.0)	52.0
AD-2545	810	220	660	250 x 450 x 200	100	220/380/415 Three Ph - (18.0)	80.0

