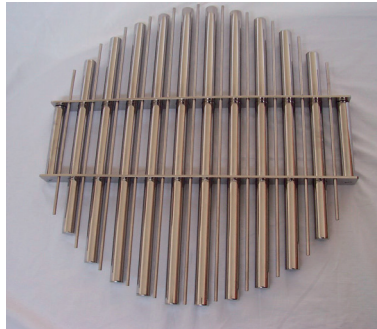


GRATE MAGNETS

Rod Magnet Mesh in Grate Form

Magnetic Grates are used in bins, chutes, drawers and hoppers. They are designed to remove ferrous metal and tramp iron from free-flowing materials such as plastics, foods, cosmetics, grains and minerals.

Standard magnetic grates feature 25mm (1 inch) diameter round bars filled with either high grade Ceramic or Rare Earth Magnets, arrayed on 50mm centers and welded into grid configurations. Both round and square shapes of single or double layers are available with or without angular or rod baffles to direct product flow.



Round Grate



Square Grate



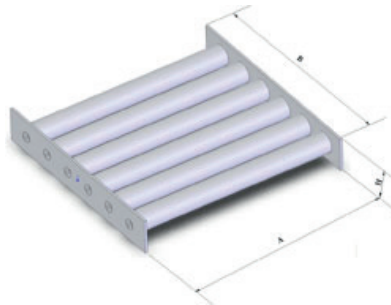
Special design round grate for funnel shape



Variation of round grate



Another variation round grate for funnel shape



Product Code: GM

Table Specs for single layer rods

Round Shape		Square Shape	
Specifications (mm)	Bars	Specifications (mm)	Bars
Dia. 100 x 40	2	100 x 100 x 40	2
Dia. 150 x 40	3	150 x 150 x 40	3
Dia. 200 x 40	4	200 x 200 x 40	4
Dia. 250 x 40	5	250 x 250 x 40	5
Dia. 300 x 40	6	300 x 300 x 40	6
Dia. 350 x 40	7	350 x 350 x 40	7
Dia. 400 x 40	8	400 x 400 x 40	8
Dia. 450 x 40	9	450 x 450 x 40	9
Dia. 500 x 40	10	500 x 500 x 40	10

All dimensions in metric units



Single layered round grate



Double layered round grate

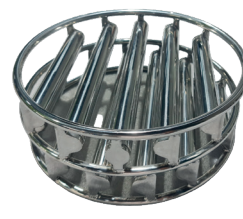
Different variations of single or double layer Grate Magnets



Normal type grate



Easy cleaning type grate



Another variation of double layered grate

Supreme Magnets' Grate Magnets are by default constructed for sanitary grade (SS304) or food grade (SS316, upon asking).

Downgraded construction for non-sanitary application upon request