

Radial Pole Round Magnetic Chuck



- Homogeneous magnetic field throughout the top plate.
- The power is adjustable from 0% to 100% by positing the handle.
- Top plate is machinable upto 8 mm.
- Detachable handle for easy use.



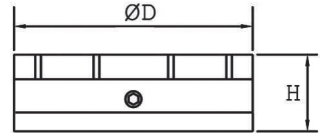
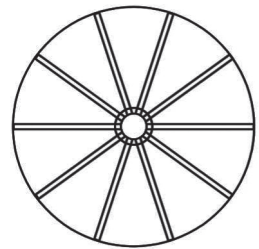
Product Code : PR

All dimensions in metric units

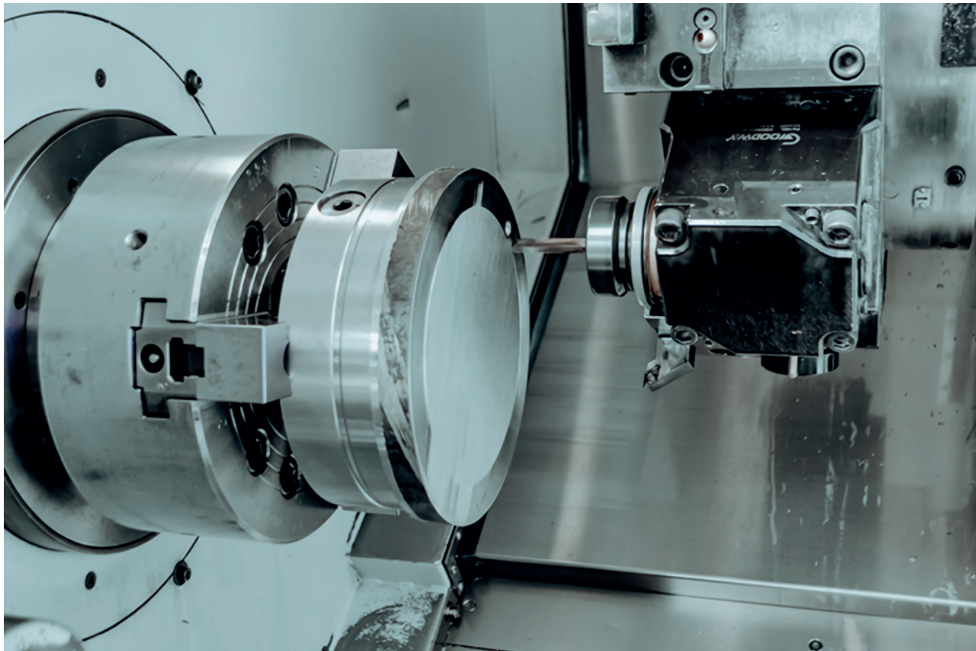
| Model No. | DIA (OD) | No. of Poles | H |
|-----------|----------|--------------|----|
| PR-10 | 100 | 6 | 54 |
| PR-13 | 130 | 8 | |
| PR-16 | 160 | 10 | |
| PR-20 | 200 | 14 | |
| PR-22 | 225 | | |
| PR-25 | 250 | 18 | 60 |
| PR-30 | 300 | | |
| PR-35 | 350 | | |
| PR-40 | 400 | 20 | |
| PR-45 | 450 | | |
| PR-50 | 500 | 30 | |
| PR-60 | 600 | | |



- Ideal for disc and ring shaped components.
- Powerful and most suitable for components of all sizes for grinding and light turning.
- Made with centre through holes for internal grinding and boring operations.



Due to continuous upgradation in design there could be changes in specification. Other sizes on request. Before ordering, contact Supreme Magnets or your nearest dealer to confirm the suitability of this model for your application.



Powergrind Round Application

