

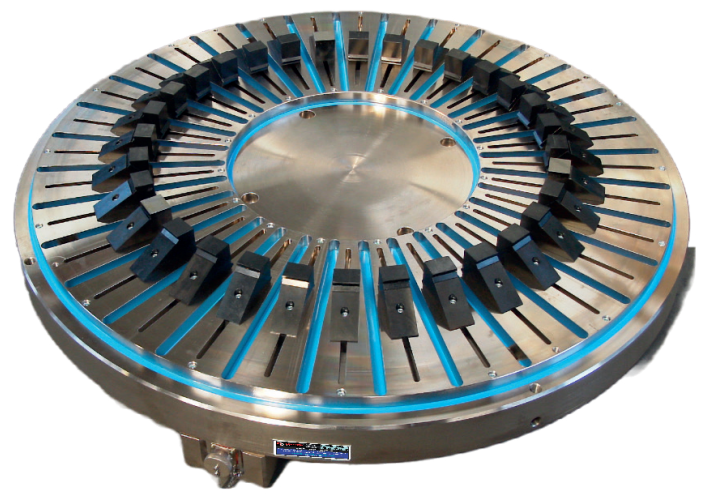
Radial Pole Electropermanent Magnet Round Chuck



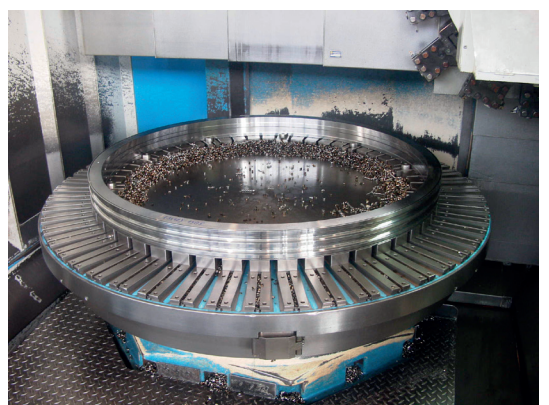
- Perfect safety in case of power failure. No electricity needed to keep the Magnetic chuck ON.
- Power from all poles transferred to Rings / Plates held in concentric.
- High resistance to coolant.
- It has high mechanical rigidity and proven robustness.
- High resistance to both Axial and Radial forces enabling application of Heavy cuts.



- Clamps ferromagnetic Rings on vertical and horizontal turning lathes.
- Radially movable location blocks will help to position and secure work pieces (bearing rings, thrust bearings, etc.); this is also necessary for clearance of the cutting tool or wheel.
- Mobile Pole extensions ensures perfect clamping of irregular work pieces.



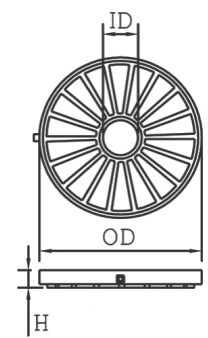
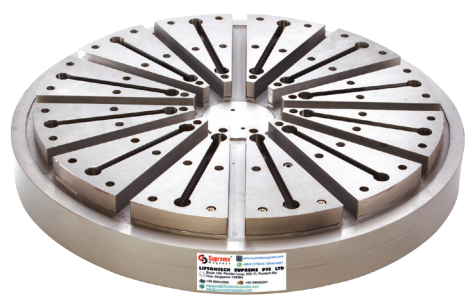
For power connection bayonet connector is recommended, when the chuck is intended to be used in different machines.
Carbon Brush Holder with Brass collector slip rings for fitting on the machine spindle for Power supply is recommended when the chuck is for specific machine.



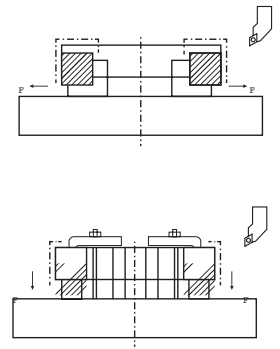
Product Code : EPMR All dimensions in metric units

Model No.	OD	H	ID	Wt
EPMR-30	300	90	90	32
EPMR-45	450		150	70
EPMR-50	500		175	85
EPMR-60	600		200	124
EPMR-80	800		250	223
EPMR-100	1000	100	250	403
EPMR-120	1250		300	632
EPMR-150	1500	110	500	945
EPMR-170	1750		500	1328
EPMR-200	2000	115	500	1850
EPMR-250	2500		600	2905

Due to continuous upgradation in design there could be changes in specification. Other sizes on request. Before ordering, contact Supreme Magnets or your nearest dealer to confirm the suitability of this model for your application.



Chuck Jaw Clamping



Radial Pole Clamping

