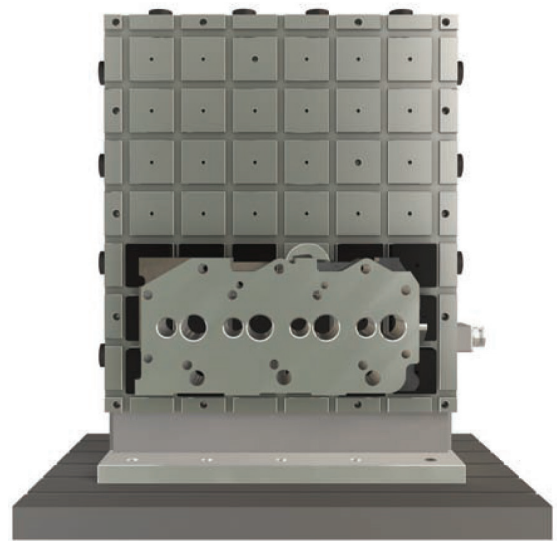


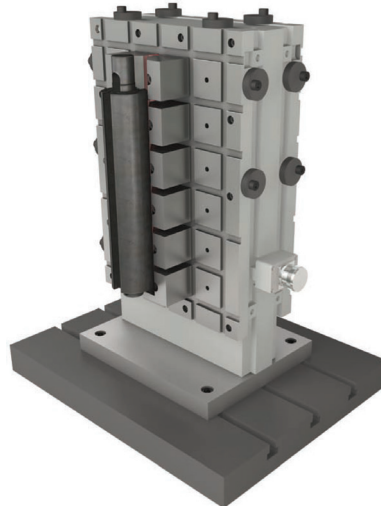
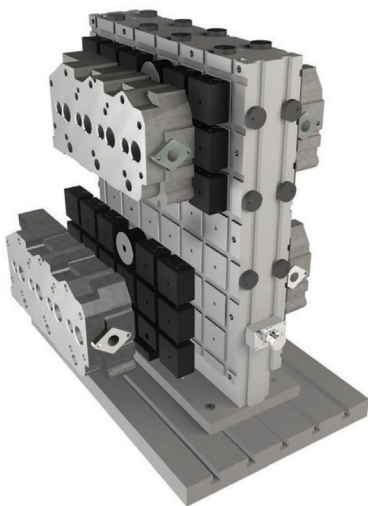
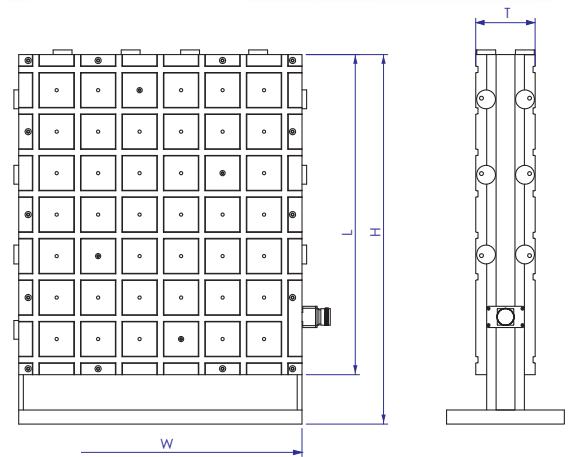
50 / 75mm Square pole Electropermanent Magnet Tombstone



- Patented full steel Top surface.
- High induction of magnetic flux.
- High & uniform clamping power throughout the bed.
- Variable magnetic power possible.
- Perfect safety in case of power failure.
- 2 or 4 or multiple magnetic face.
- Unobstructed movement of tools during machining as all five faces of the job can be machined in the same setting.
- Drastically reduces the setup time and machining of the work pieces.
- Total magnetic surface used for clamping giving better machining accuracy as reducing chattering.
- 100% Leak Proof.
- Clamping force for EPCUBE 50 ≥ 350 kg/ pole.
- Clamping force for EPCUBE 75 ≥ 790 kg/ pole.



- Most suitable for milling operations on horizontal machining center.
- A minimum of 4/8 alternate poles contact is necessary for optimum clamping.
- Minimum thickness of job : 10-15 mm.
- Easily integrated with Pallet changing and FMS Systems.
- AUTOMATIC SHIMMING: Mobile pole extensions allow clamping and uniformly support work pieces even with uneven surfaces, achieving high accuracies of planarity.



- The Magnet can be designed for 220/380/400/480 VAC, 50/60 Hz.
- Custom designed solutions also available.

Product Code: MT75

All dimensions in metric units

Model	W	L	H	T	Poles On Each Face
3030	327	337	442	125	9
4040	415	425	530	125	16
4060	415	601	706	125	24
6080	591	815	920	125	48
6060	601	679	784	125	42
8060	767	590	695	125	64
80100	767	1029	1134	125	80

Due to continuous upgradation in design there could be changes in specification. Other sizes on request. Before ordering, contact Supreme Magnets or your nearest dealer to confirm the suitability of this model for your application.

Product Code: MT50

All dimensions in metric units

Model	W	L	H	T	Poles On Each Face
3040	300	430	535	125	24
4060	420	590	695	125	48
5060	480	590	695	125	56
6050	590	480	585	125	56
6060	590	600	705	125	72
6080	600	750	855	125	90
60100	600	990	1095	125	126

Due to continuous upgradation in design there could be changes in specification. Other sizes on request. Before ordering, contact Supreme Magnets or your nearest dealer to confirm the suitability of this model for your application.

