

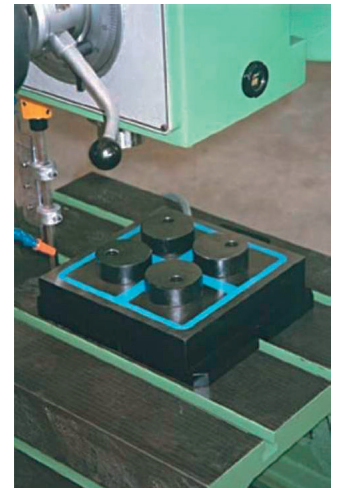
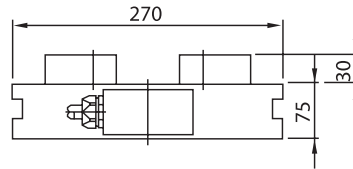
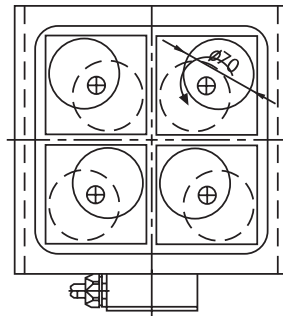
## Multi-Purpose Mini EPM Clamp For General Gripping, Tooling & Fixturing



- A smaller version of the Magna Mill.
- Energy saving as electricity is used only for switching on and off.
- High clamping force is supplied by the super powerful NdFeB magnets.
- All metal surface provides stable working area.
- Ideal for quick setup for drilling with top or side clamping.
- Standard model comes with 4 Off-centered rotary pole extension blocks.



- Ideal for drilling applications on bench, pillar and radial drilling machines.
- Pole extension blocks raise the work piece above the chuck to provide clearance for drill through.



Product Code : EP-MD

All dimensions in metric units

Model No.	L	W	H	H1	P	Dia (D)	Weight (Kgs)
EP-MD220	239	229	60	30	75	50	25
EP-MD160	160	160	55	25	50	30	12

Dimensions are non-binding and can be custom designed. Pole Extension :30 or 50mm dia off-centered counterbore

Due to continuous upgradation in design there could be changes in specification. Other sizes on request. Before ordering, contact Supreme Magnets or your nearest dealer to confirm the suitability of this model for your application.

# MAGNA DOUBLE

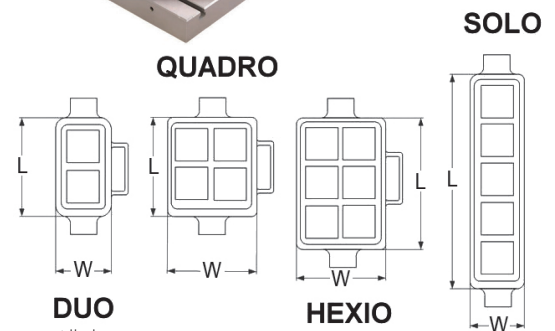
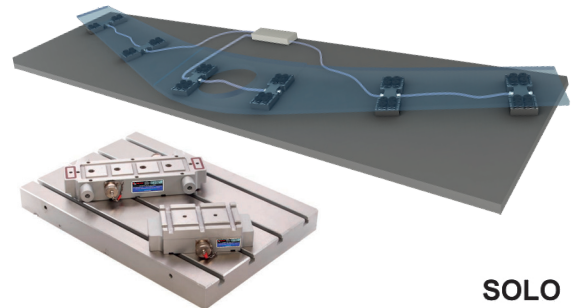
## Quick Setup, Double Sided EPM Clamp For Large Plate Machining And Special Applications



- A special variation of the Magna MaxMill.
- Magnetic Power over 80 MT/SqM.
- Energy saving design : Electricity is required only for ON/OFF.
- Both primary faces are magnetic. The bottom face clamps to the steel platform or machine table. The top face clamps the job.
- Quickest setup time for drilling, welding, or unique clamping applications.
- Flexibility is maximum as the unit can be positioned anywhere on the table with ease.
- Waterproof construction, can be designed for 110/220/440 VAC, 2-15 Amp.



- Mold base machining .
- Radial, bench, pillar drilling applications.
- Large plate welding & machining applications.



Product Code : EPMDD

All dimensions in metric units

Model No.	L	W	T	Weight
50 X 50MM SQ POLE			Height without extension block	Weight of the module in Kgs
DUO-50	170	110	50	7
QUADRO-50	170	170	50	10
HEXIO-50	230	170	50	14
SOLO-50	Specify no. of squares	110	50	~
75 X 75MM SQ POLE				
DUO-75	220	135	65	11
QUADRO-75	220	220	65	22
HEXIO-75	305	220	65	31
SOLO-75	Specify no. of squares	135	65	~

Due to continuous upgradation in design there could be changes in specification. Other sizes on request. Before ordering, contact Supreme Magnets or your nearest dealer to confirm the suitability of this model for your application.

