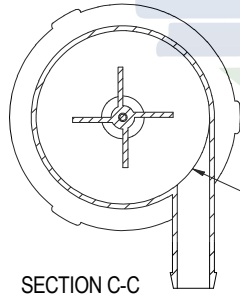


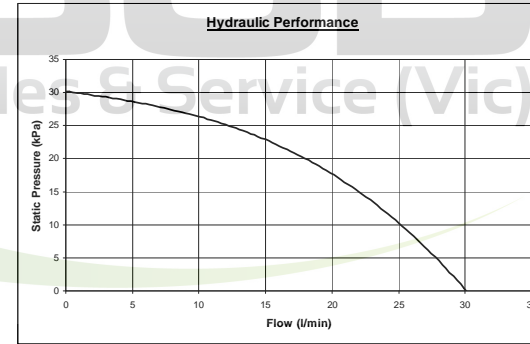
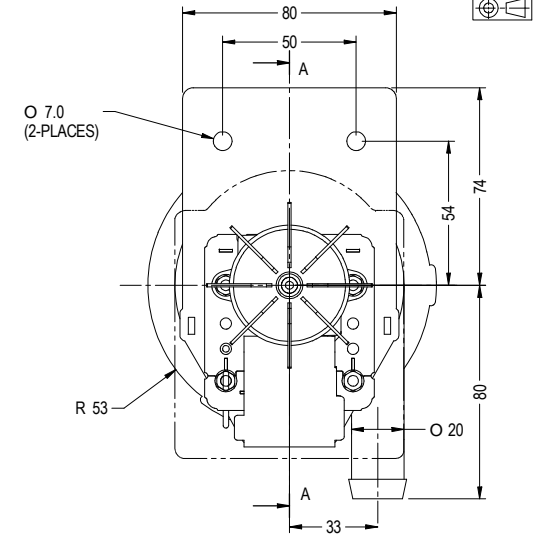
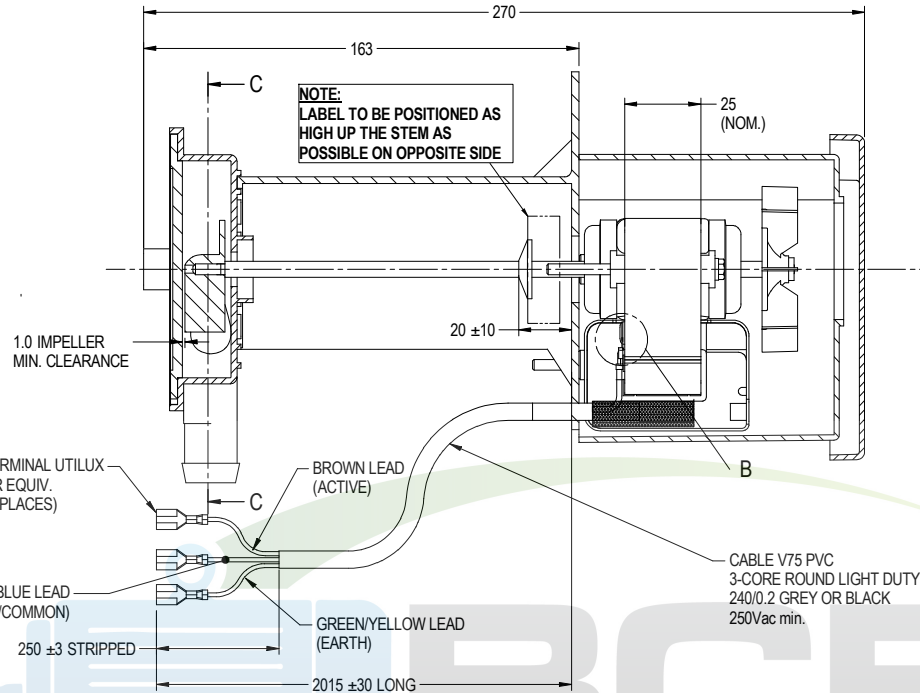
PUMP BASE

SHAKEPROOF WASHER BETWEEN STACK AND TERMINAL  
EARTH TERMINAL TO BE POP RIVETED

DETAIL B

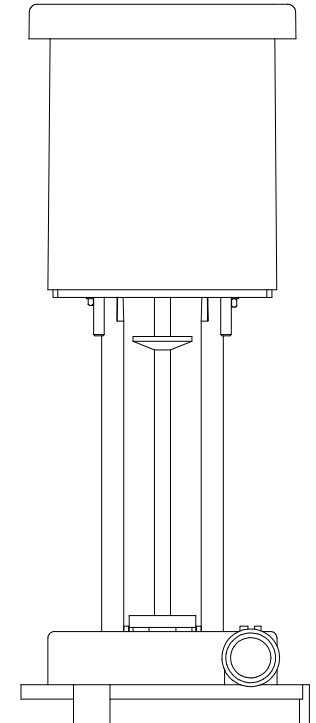
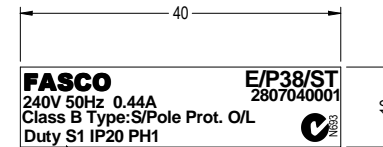


SECTION C-C



REMOVE ALL FLASH TO ENSURE CLEAR PASSAGE OF WATER THROUGH OUTLET PORT.

MOTOR SPECIFICATION									
CUSTOMER	VARIOUS			APPLICATION	EVAPORATIVE COOLER PUMP				
CUSTOMER PIN	N/A			MOUNTING	BRACKET				
OR No.	CAPACITOR	uf / V		BEARING & LUBRICATION	BALL BEARING 626 ZZ - 140°C				
POWER OUTPUT	14.5W	START		SUPPLY LEAD	COLOUR	AS SHOWN			
MOTOR TYPE	S/POLE	RUN		<input type="checkbox"/> MULTI STRAND	LENGTH	AS SHOWN			
SUPPLY	VOLTS	HERTZ	PHASE	POLES	TERMINALS	AS SHOWN			
	240	50	1	2	Q.C. HOUSING	N/A			
ENCLOSURE	CLIP ON BOBBIN			EARTH PROVISION	AS SHOWN				
SPEED (RPM) AT RATED OUTPUT	2050	WINDING TYPE	SINGLE/SP		RESISTANCE	41 OHMS			
ROTATION	ANTI-CLOCKWISE			BASIC BUILD SPECIFICATION	N/A				
INSULATION CLASS	B	DUTY	S1		PERFORMANCE SPECIFICATION				
THERMAL PROTECTION	AUTO RESET 125°C			SHAFT MATERIAL	SS 420				
RATED CURRENT	0.44	AMPS AT RATED OUTPUT			CONNECTION DIAGRAM	PAINT SPEC	BLACK		
					<b>SPECIAL REQUIREMENTS</b> NOTE:- 1. Gauge clearance between impellor and suction plate Clearance required > 1.0 mm  2. PALLET LABEL SHALL HAVE  "MODEL NUMBER" "DATE OF MANUFACTURE" "QUANTITY ON PALLET"  3. PUMPS INDIVIDUALLY PACKET IN BOXES  <b>TEST REQUIREMENTS</b> LOW VOLTAGE START TEST MOTOR MUST RUN UP TO 2 POLE SPEED AT NO LOAD AT 150Vac, 50Hz LOWER				



DIMENSIONS IN MM UNLESS OTHERWISE SPECIFIED

GENERAL TOLERANCES	
LINEAR	±0.15
ANGULAR	±0.5
SURFACE FINISHES SHALL BE MICROMETRES UNLESS OTHERWISE SPECIFIED	

MATL	FINISH	DATE
DRAWN	MURFETTR	15/12/06
CHECKED	BALCHANT	07/12/11
RELEASED	BALCHANT	07/12/11
SCALE		



FRAME	STATUS	SHEET	DWG. NO.	REVISION
	R		E/P38/ST	C