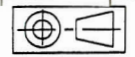


FASCO MOTORS MAY PROVIDE TECHNICAL ASSISTANCE TO OUR CUSTOMERS IN MANY AREAS. HOWEVER, SINCE FASCO MOTOR IS NOT AWARE OF ALL DATA CONCERNING THE USE AND APPLICATION OF THIS MOTOR, THE FITNESS OF THE MOTOR FOR THE APPLICATION MUST BE DETERMINED BY AND IS THE RESPONSIBILITY OF THE CUSTOMER.

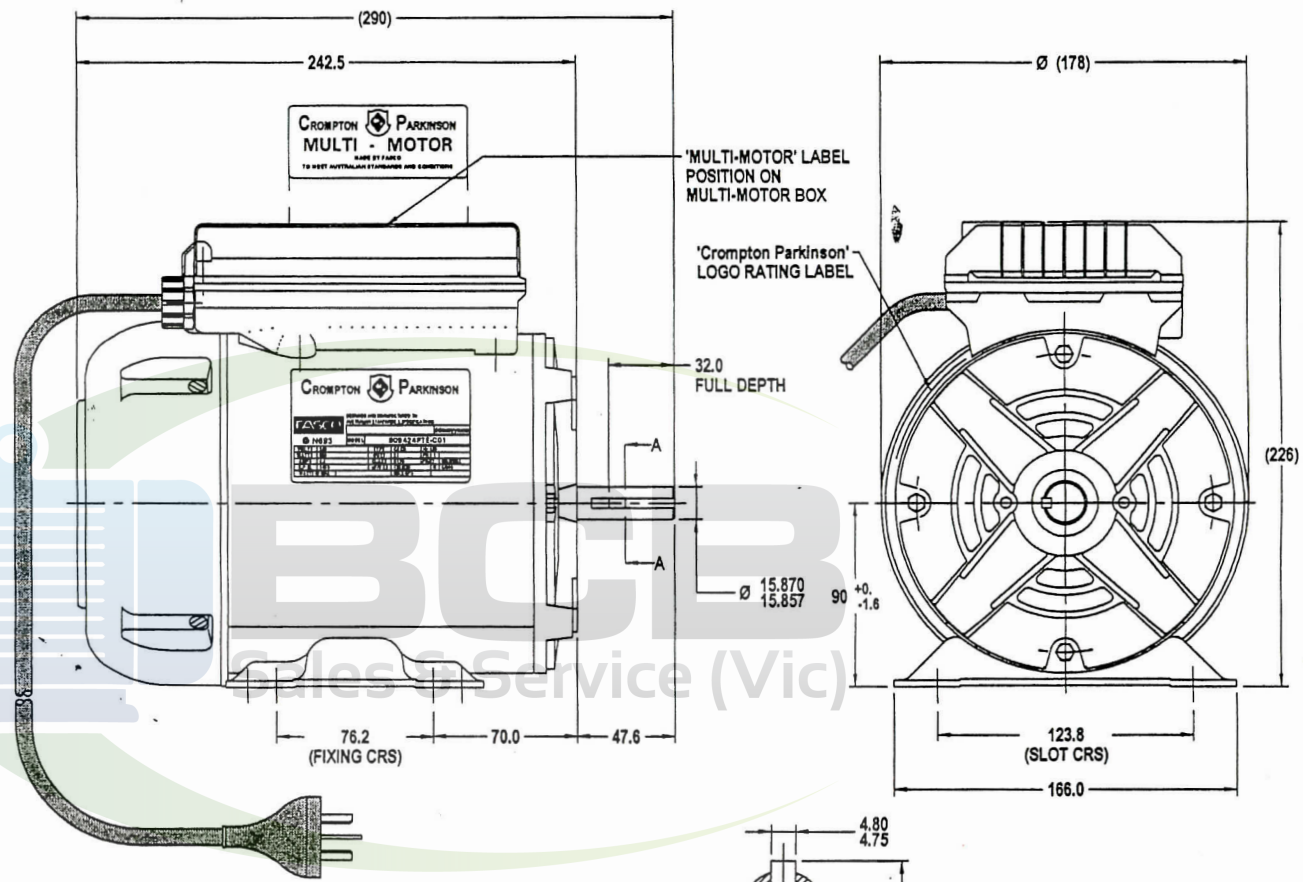


THIRD ANGLE PROJECTION

MOTOR SPECIFICATION

809424PTE-C01

| | | | |
|---------------------------|--|-------------------|-----------------------|
| Q.R. No. | 7756 | CUSTOMER NO. | - |
| CUSTOMER | VARIOUS | | |
| MOTOR RATING | VOLTS | 240 | Hz 50 Ph 1 Duty S1 |
| | RPM. | 1450 | 4.4 AMPS |
| | NOM. OUTPUT | 550 WATTS | |
| ROTATION | CLOCK WISE AT SHAFT END | | |
| CAPACITOR | START | 120/230 μ F/V | RUN 6/440 μ F/V |
| ENCLOSURE | T.E.F.C. | | |
| MOTOR TYPE | CSCR | INSULATION CLASS | B |
| THERMAL PROTECTION | MANUAL OVERLOAD | | |
| APPLICATION | GENERAL PURPOSE | | |
| BEARING D.E. | 6204 ZZ | LUBRICATION | LONG LIFE, WIDE RANGE |
| BEARING N.D.E. | 6203 ZZ | | |
| SUPPLY LEAD | FLEX 10A PLUG 2000 \pm 30 GREY W/GLAND NUT | | |
| EARTH PROVISION | VIA SUPPLY LEAD | | |
| BASIC BUILD SPECIFICATION | 470-067-03 | PAINT/ COLOUR | STD.BLUE |
| PERFORMANCE SPECIFICATION | SP94098-01 | | |
| CONNECTION DIAGRAM | 305-656-01 | RATING LABEL | TCPLABEL.FMT |



CROMPTON PARKINSON

DESIGNED AND MANUFACTURED TO AUSTRALIAN STANDARDS & SPECIFICATIONS

FASCO ddmmyyxxxx

G N693 MODEL **809424PTE-C01**

| | | | | | |
|--------------|------|--------------|---------|-------|--------|
| VOLTS | 240 | TYPE | CSCR | Hz | 50 |
| WATTS | 550 | DUTY | S1 | PH | 1 |
| AMPS | 4.4 | CLASS | B130 | PROT. | MANUAL |
| R.P.M. | 1450 | μ FV S | 120/230 | R | 6/440 |
| WATTS IN MAX | | MAX kPa | | | |

55.0

87.0

SPECIAL REQUIREMENTS:

- 1)_'MULTI-MOTOR' LABEL 393-521-01 TO BE FITTED AS INDICATED, TO READ FROM LEAD END TO DRIVE END.
- 2)_'REVERSING' LABEL 393-468-02 TO BE FITTED UNDER CAPACITOR BOX LID.

UNLESS OTHERWISE SPECIFIED : DIMENSIONS ARE IN MM. TOLERANCES

| | |
|--------------|-----------|
| DECIMALS | ANGULAR |
| X \pm 1.0 | \pm 30' |
| XX \pm 0.5 | |

THE DRAWING REMAINS THE PROPERTY OF FASCO MOTORS AND MAY NOT BE USED, COPIED OR REPRODUCED WITHOUT WRITTEN PERMISSION FROM FASCO MOTORS

| | |
|---------------|-------|
| MATL & FINISH | |
| DRAWN | NITH |
| CHECKED | KIT |
| RELEASED | KITTI |
| SCALE | |

BCB SALES & SERVICE
PH: 03 9546 3833
FAX: 03 9546 3356

| | | |
|--------|-------------------|----------|
| FRAME | MOTOR | |
| STATUS | 098:9424T-550-AAD | |
| R | DWG. NO. | REVISION |
| SHEET | 809424PTE-C01 | A |
| A3 | | |

MIC No. 003764
 By: NITTHAD
 Date: 22/03/01
 MIC MODIFIED FROM 809424PTE-B01 AND CHANGE
 Note: ENSHIELD

CONTROLLED COPY
 AUG 2001