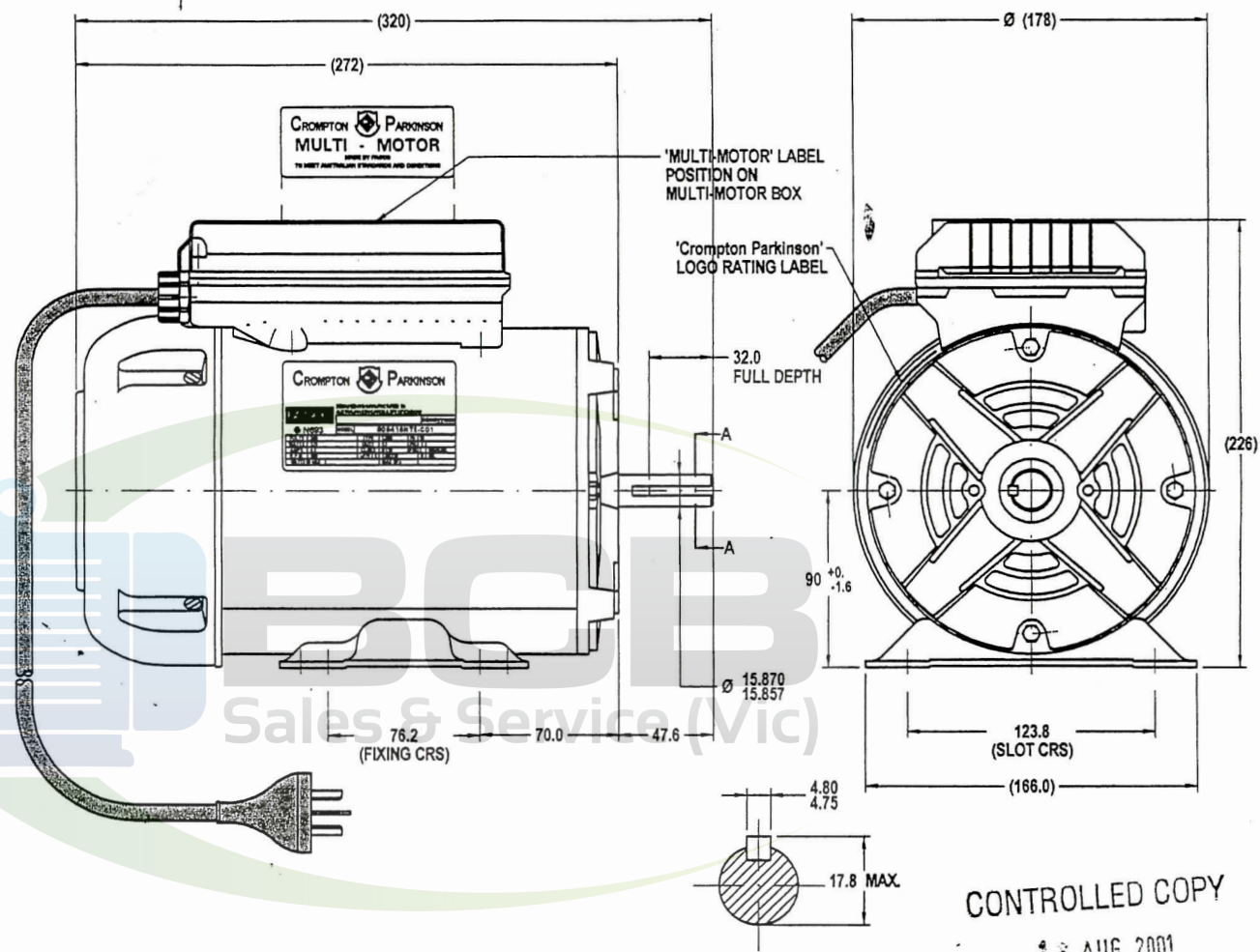


THIRD ANGLE PROJECTION

**MOTOR SPECIFICATION**

**809416NTE-C01**

Q.R. No.	7678	CUSTOMER NO.						
CUSTOMER	VARIOUS							
MOTOR RATING	VOLTS	240	Hz	50	Ph	1	Duty	S1
	RPM.	960		4.6		AMPS		
	NOM. OUTPUT	370 WATTS						
ROTATION	CLOCK WISE AT SHAFT END							
CAPACITOR	START	120/230	µF/V	RUN	NIL		µF/V	
ENCLOSURE	T.E.F.C.							
MOTOR TYPE	CSIR	INSULATION CLASS	B					
THERMAL PROTECTION	MANUAL OVERLOAD							
APPLICATION	GENERAL PURPOSE							
BEARING D.E.	6204 ZZ		LUBRICATION	LONG LIFE, WIDE RANGE				
BEARING N.D.E.	6203 ZZ							
SUPPLY LEAD	FLEX 10A PLUG 2100±30 GREY W/GLAND NUT							
EARTH PROVISION	VIA SUPPLY LEAD							
BASIC BUILD SPECIFICATION	470-067-06	PAINT/ COLOUR	STD.BLUE					
PERFORMANCE SPECIFICATION	SP94107-01							
CONNECTION DIAGRAM	305-656-02	RATING LABEL	TCPLABEL.FMT					



SECTION A-A

CONTROLLED COPY  
AUG 2001

MIC No: 003764  
By: NITHAD  
Date: 10/04/01  
MIC MODIFIED FROM 809416NTE-B01  
No.:

**CROMPTON PARKINSON**

DESIGNED AND MANUFACTURED TO AUSTRALIAN STANDARDS & SPECIFICATIONS

**FASCO** ddmmyxxxx

**N693** MODEL: 809416NTE-C01

VOLTS	240	TYPE	CSIR	Hz	50
WATTS	370	DUTY	S1	PH	1
AMPS	4.6	CLASS	B130	PROT.	MANUAL
R.P.M.	960	µF/V	120/230	R	NIL
WATTS IN MAX		MAX kPa			

55.0

87.0

SPECIAL REQUIREMENTS:  
1)\_'MULTI-MOTOR' LABEL 393-521-01 TO BE FITTED AS INDICATED, TO READ FROM LEAD END TO DRIVE END.  
2)\_'REVERSING' LABEL 393-468-02 TO BE FITTED UNDER CAPACITOR BOX LID.

UNLESS OTHERWISE SPECIFIED :  
DIMENSIONS ARE IN MM.  
TOLERANCES

DECIMALS	ANGULAR
.X ± 1.0	± 30'
.XX ± 0.5	

THIS DRAWING REMAINS THE PROPERTY OF FASCO MOTORS AND MAY NOT BE USED, COPIED OR REPRODUCED WITHOUT WRITTEN PERMISSION FROM FASCO MOTORS

MATL & FINISH	
DRAWN	NITHAD
CHECKED	KITTI
RELEASED	KITTI
SCALE	

**BCB SALES & SERVICE**  
PH : 03 9546 3833  
FAX : 03 9546 3356

297-8 MOO 3, BANGKRUAY - SAINOI Rd.,  
BANGKRANG, MUANG NONTHABURI DISTRICT,  
NONTHABURI 11000 THAILAND

MOTOR	107:9416T-370-AAD
DWG. NO.	809416NTE-C01
SHEET	A3
REVISION	A