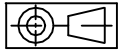


FASCO MOTORS MAY PROVIDE TECHNICAL ASSISTANCE TO OUR CUSTOMERS IN MANY AREAS. HOWEVER, SINCE FASCO MOTOR IS NOT AWARE OF ALL DATA CONCERNING THE USE AND APPLICATION OF THIS MOTOR, THE FITNESS OF THE MOTOR FOR THE APPLICATION MUST BE DETERMINED BY AND IS THE RESPONSIBILITY OF THE CUSTOMER.



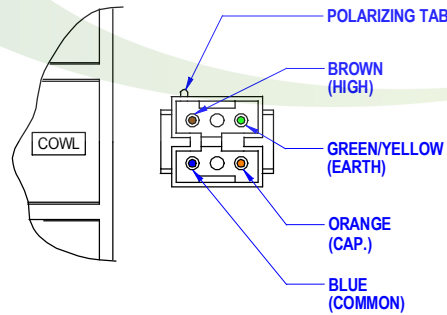
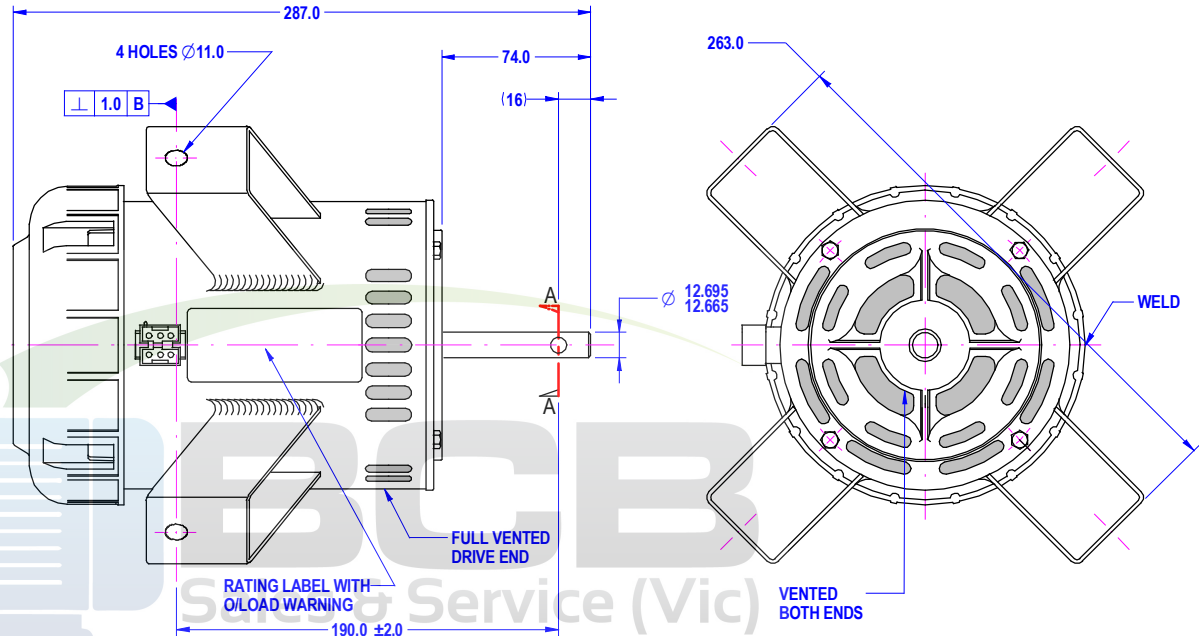
MOTOR SPECIFICATION

80855BQVA-A17S

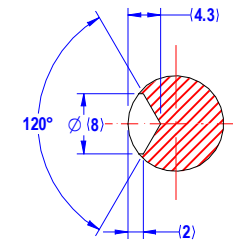
Q.R. No.	-	CUSTOMER NO.	6011637S						
CUSTOMER	SOUTHCORP								
MOTOR RATING	VOLTS	240	Hz	50	Ph	1	Duty	S1 A.O.M.	
	RPM.	1350			4.9 AMPS				
	NOM. OUTPUT	750 WATTS							
ROTATION	CLOCK WISE AT DRIVE END								
CAPACITOR	START	-----	μF/V	RUN	20/440				μF/V
ENCLOSURE	VENTED								
MOTOR TYPE	PSC	INSULATION CLASS	F155						
THERMAL PROTECTION	AUTO RESET OVERLOAD								
APPLICATION	EVAPORATIVE COOLER								
BEARING D.E.	6202 DDU C3		LUBRICATION	LONG LIFE, WIDE RANGE					
BEARING N.D.E.	6202 DDU C3								
SUPPLY LEAD	-								
EARTH PROVISION	VIA TERMINAL BLOCK								
BASIC BUILD SPECIFICATION	305-629-01		PAINT/ COLOUR	PC GREY CASE PLAIN E/SHIELDS					
PERFORMANCE SPECIFICATION	SP85178-02								
CONNECTION DIAGRAM	393-402-05		RATING LABEL	SSTDAUTO.FMT					

FINAL INSPECTED MOTORS MUST COMPLY WITH H ELECTRIC MOTOR VIBRATION SPECIFICATION (ES049)

THIRD ANGLE PROJECTION



RELATIVE POSITION OF POLARIZING TAB & COWL MUST BE MAINTAINED



SECTION A-A enlarged view



DESIGNED AND MANUFACTURED TO AUSTRALIAN STANDARDS & SPECIFICATIONS

N693

6011637S	ddmmyyxxxx
MODEL	80855BQVA-A17S

VOLTS 240	R.P.M. 1350	CLASS F155	Hz 50
WATTS 750	TYPE CSR	μF/V S NIL	Ph 1
AMPS 4.9	DUTY S1 AOM	μF/V R 20/440	PROT. AUTO

WARNING

MOTOR FITTED WITH INTERNAL AUTO RESET OVERLOAD AND MAY RESTART WITHOUT WARNING

SPECIAL REQUIREMENTS:

- 1) RATING LABEL 393-557-07 DOES NOT SHOW DATA AS ON SP85178-02 (IT IS CUSTOMER SUPPLIED INFORMATION.)
- 2) MOTORS TO BE PACKED IN INDIVIDUAL CARTONS WITH RATING LABEL PUT ON BOTH CARTON AND MOTOR.

UNLESS OTHERWISE SPECIFIED : DIMENSIONS ARE IN MM. TOLERANCES

DECIMALS	ANGULAR
.X ± 1.0	± 30'
.XX ± 0.5	

THIS DRAWING REMAINS THE PROPERTY OF FASCO MOTORS AND MAY NOT BE USED, COPIED OR ISSUED WITHOUT WRITTEN PERMISSION FROM FASCO MOTORS

MOTOR WEIGHT	X.X kg.	
DRAWN	SYDNEY	24/11/98
CHECKED	PIPAT	26/10/01
RELEASED	PIPAT	26/10/01
SCALE	N.T.S.	



29/7-8 MOO 3, BANGKRUAY - SAINOI Rd., BANGKRANG, MIANG NONGTHABURI DISTRICT, NONGTHABURI 11000 THAILAND

FRAME	MOTOR		
STATUS	R		
SHEET	178:855BV-750-HAD:ILEC		
A3	DWG. NO.	80855BQVA-A17S	REVISION
			D