

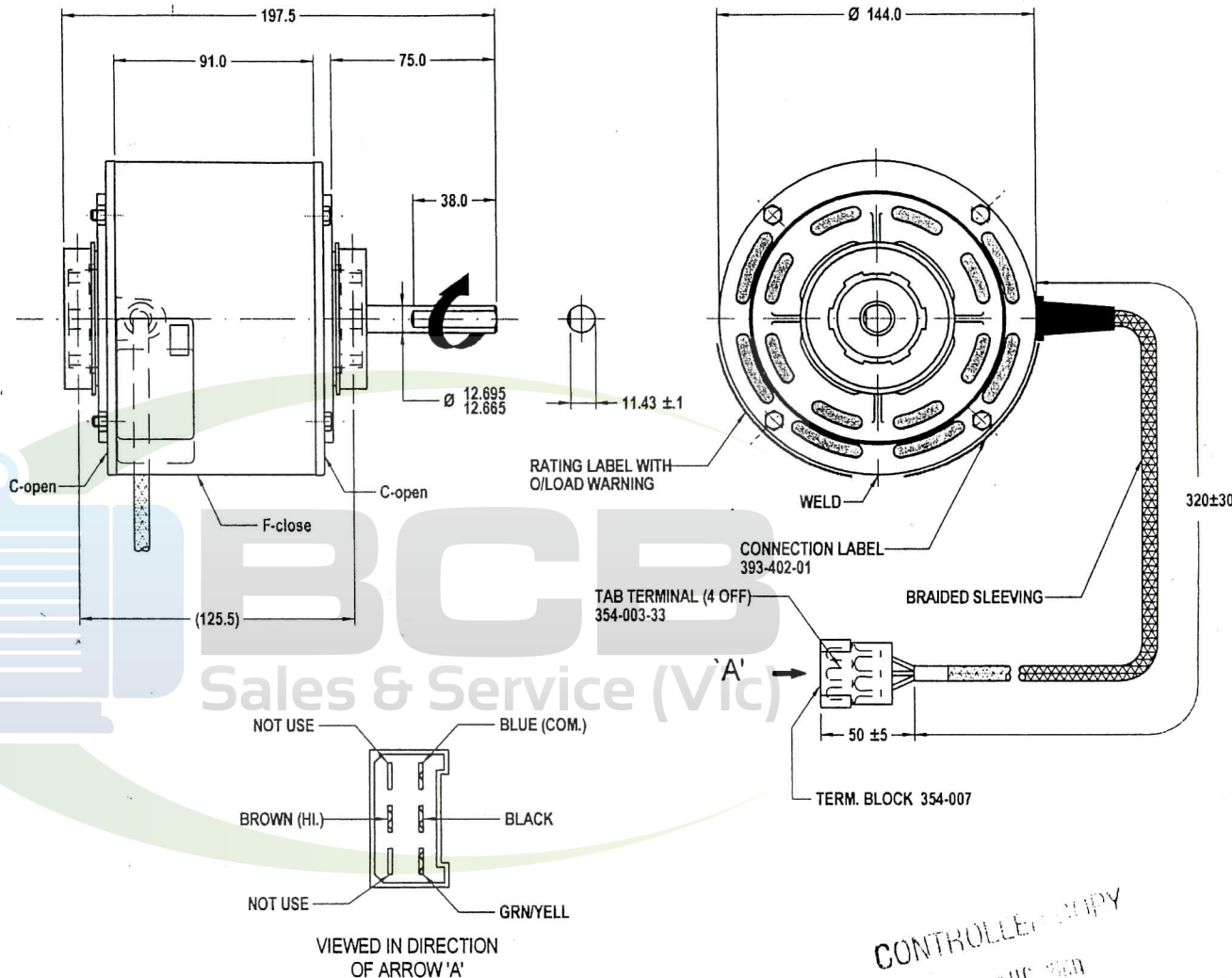


THIRD ANGLE PROJECTION

MOTOR SPECIFICATION

808554MVA-A15

Q.R. No.	Y000617	CUSTOMER NO.	40P5114-250SA-1		
CUSTOMER	TORIN				
MOTOR RATING	VOLTS	240	Hz	50	Ph 1
	RPM.	1340		Duty S1 A.O.M.	
	NOM. OUTPUT	250 WATT			
ROTATION	CLOCK WISE AT SHAFT END				
CAPACITOR	START	-----	μF/V	RUN	4/440 μF/V
ENCLOSURE	VENTED				
MOTOR TYPE	PSC	INSULATION CLASS	B		
THERMAL PROTECTION	AUTO RESET OVERLOAD				
APPLICATION	BLADE				
BEARING D.E.	6202 ZZ	LUBRICATION	LONG LIFE, WIDE RANGE		
BEARING N.D.E.	6202 ZZ				
SUPPLY LEAD	AS SHOWN				
EARTH PROVISION	VIA TERMINAL BLOCK				
BASIC BUILD SPECIFICATION	305-570-03	PAINT/ COLOUR	DARK GREY		
PERFORMANCE SPECIFICATION	SP85069-01				
CONNECTION DIAGRAM	393-402-01	RATING LABEL	SSTDAUTO.FMT		



DESIGNED AND MANUFACTURED TO AUSTRALIAN STANDARDS & SPECIFICATIONS

40P5114 - 250SA - 1 [ddmmyyxxxx]

N693

MODEL 808554MVA-A15

VOLTS 240	R.P.M. 1340	CLASS B130	Hz 50
WATTS 250	TYPE CSR	μF/V S NIL	Ph 1
AMPS 2.0	DUTY AOM	μF/V R 4/440	PROT. AUTO

WARNING MOTOR FITTED WITH INTERNAL AUTO RESET OVERLOAD AND MAY RESTART WITHOUT WARNING

SPECIAL REQUIREMENTS:

UNLESS OTHERWISE SPECIFIED: DIMENSIONS ARE IN MM. TOLERANCES

DECIMALS	ANGULAR
.X ± 1.0	± 30'
.XX ± 0.5	

THIS DRAWING REMAINS THE PROPERTY OF FASCO MOTORS AND MAY NOT BE USED, COPIED OR ISSUED WITHOUT WRITTEN PERMISSION FROM FASCO MOTORS

MATL & FINISH		
DRAWN	NITHAD	10/05/
CHECKED	KITTI	20/03/
RELEASED	KITTI	20/03/01
SCALE		

BCB SALES & SERVICE
PH : 03 9546 3833
FAX : 03 9546 3356

MOTOR

069:8554V-250-XAD:TORIN

BANGKRANG, MUANG NONHABURI DISTRICT, NONHABURI 11000 THAILAND

NO. 808554MVA-A15

REVISION D

MIC No. 003766

BY: NITHAD
Date: 20/03/01

Note:

MIC CHANGE CUSTOMER NAME AND ETC

CONTROLLED COPY
30 AUG 2001