

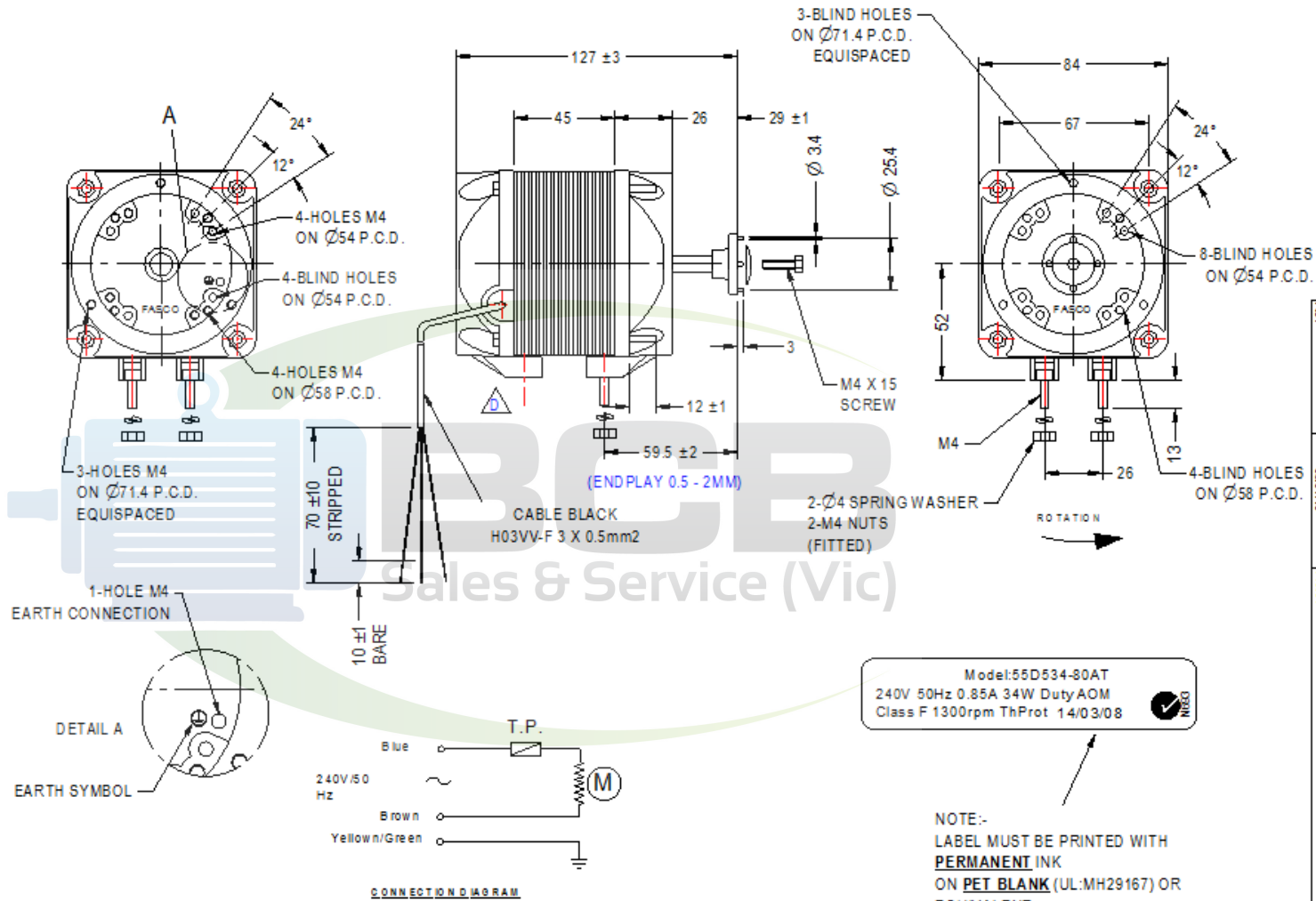
NOTE: FASCO AUSTRALIA IS HAPPY TO PROVIDE TECHNICAL ASSISTANCE TO OUR CUSTOMERS IN MANY AREAS. HOWEVER, SINCE FASCO AUSTRALIA IS NOT AWARE OF ALL DATA CONCERNING THE USE AND APPLICATION OF THIS MOTOR, THE SUITABILITY OF THE MOTOR FOR THE APPLICATION MUST BE DETERMINED BY AND IS THE RESPONSIBILITY OF THE CUSTOMER.



MOTOR SPECIFICATION

CUSTOMER	VARIOUS			
CUSTOMER P/N				
DR No.	M001242	CAPACITOR	uF/V	
POWER OUTPUT	34W	START		
MOTOR TYPE	SH/POLE	RUN		
SUPPLY	VOLTS	HERTZ	PHASE	POLES
	240	50	SINGLE	4
ENCLOSURE	TOTALLY ENCLOSED			
SPEED (RPM) AT RATED OUTPUT	1300	WINDING TYPE		
ROTATION	ANTICLOCKWISE (DRIVE END)			
INSULATION CLASS	F	DUTY	AOM	
THERMAL PROTECTION	AUTO RESET			
RATED CURRENT	0.85	AMPS AT RATED OUTPUT		
APPLICATION	FAN DRIVE			
MOUNTING	TAPPED HOLES IN ENDSHIELD OR STUDS			
BEARING & LUBRICATION	IRON SLEEVE BEARINGS PA20350-NP 125°C			
SUPPLY LEAD	COLOUR	BLACK		
	LENGTH	1500±40		
	TERMINALS			
	O.C. HOUSING			
<input checked="" type="checkbox"/> MULTI STRAND				
<input type="checkbox"/> SINGLE CORE				
EARTH PROVISION	VIA SUPPLY LEAD			
BASIC BUILD SPECIFICATION				
PERFORMANCE SPECIFICATION	SPM55004-01			
SHAFT MATERIAL	1045 STEEL			
CONNECTION DIAGRAM				

DO NOT SCALE PRINT



M/C No. 00346
 By: MURFETTR Date: 06/07/10
 M/C: ADDED MOUNTING LUGS TO NON-DRIVE END/PACKET

SPECIAL REQUIREMENTS

ATTACH PLASTIC BAG TO LEAD CONTAINING THE FOLLOWING:

- 4-OFF M4 X 8MM PAN HEAD PHILLIPS DRIVE ZP PLATED SCREWS
- 4-OFF DIA.4MM EXTERNAL SHAKEPROOF ZP PLATED WASHERS

DIMENSIONS IN mm UNLESS OTHERWISE SPECIFIED

GENERAL TOLERANCES	
LINEAR	XX = ±1.0
	XXX = ±0.25
	XXXX = ±0.1
ANGULAR	X = ±2°
	XX = ±0.5°
SURFACE FINISHES MAX 30 MICROMETRES	
SYMBOLS PER AS: 1100	

This drawing remains the property of Fasco Australia Pty. Ltd. No part or parts of this drawing may be reproduced without written permission.

MATERIAL		FINISH	
DRAWN	MURFETTR	06/08/08	
CHECKED	BALCHANT	12/07/10	
RELEASED	BALCHANT	12/07/10	
SCALE			



FRAME	MOTOR: 4P34W		REVISION D
STATUS	R		
SHEET	DWG. NO.	55D534-80AT	