

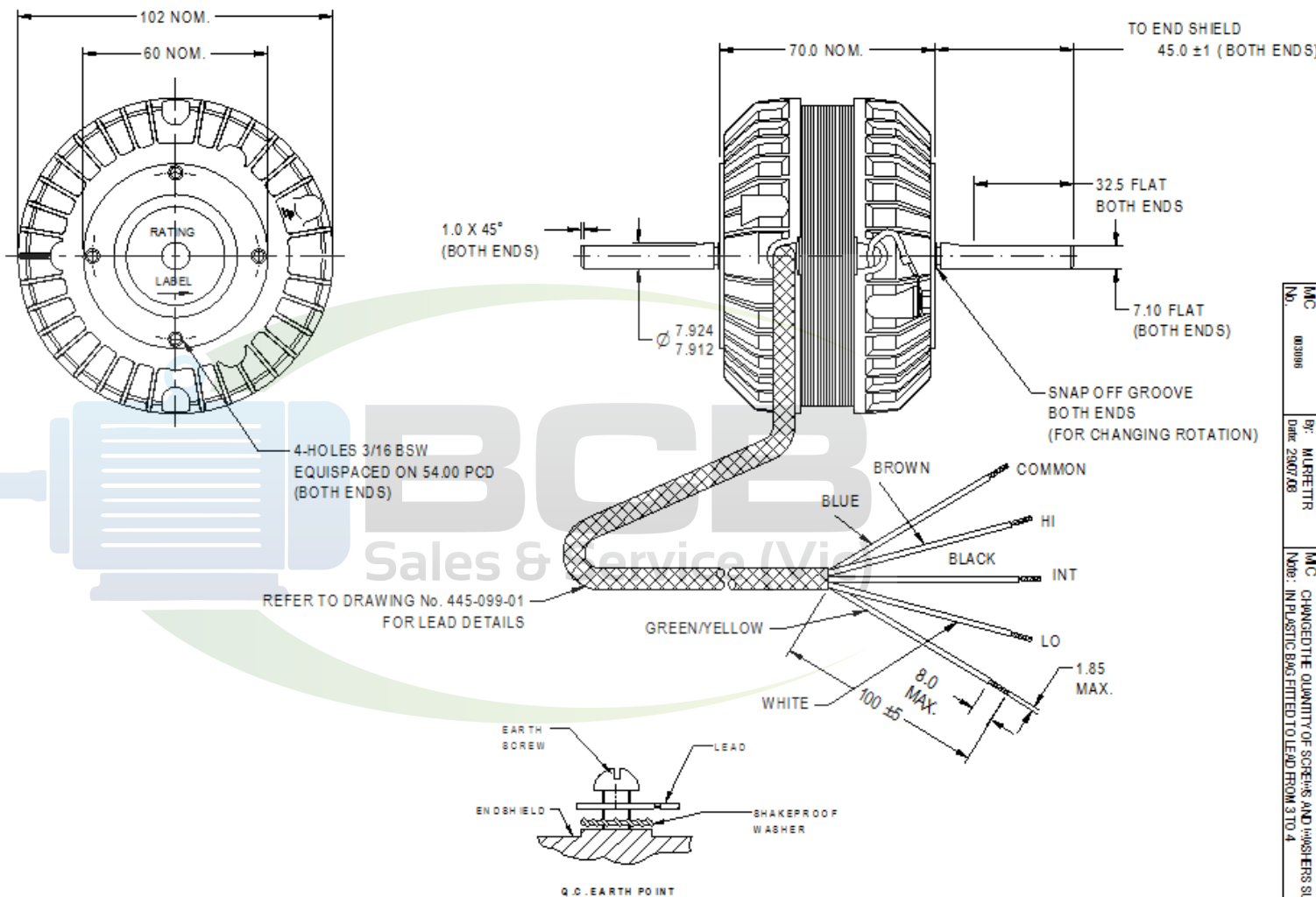
NOTE: FASCO AUSTRALIA IS HAPPY TO PROVIDE TECHNICAL ASSISTANCE TO OUR CUSTOMERS IN MANY AREAS. HOWEVER, SINCE FASCO AUSTRALIA IS NOT AWARE OF ALL DATA CONCERNING THE USE AND APPLICATION OF THIS MOTOR, THE SUITABILITY OF THE MOTOR FOR THE APPLICATION MUST BE DETERMINED BY AND IS THE RESPONSIBILITY OF THE CUSTOMER.



MOTOR SPECIFICATION

CUSTOMER	ARCUS			
CUSTOMER P.N.				
DR No.	8341	CAPACITOR	V1/V	
POWER OUTPUT	13 W	START		
MOTOR TYPE	SH/POLE	RUN		
SUPPLY	VOLTS	HERTZ	PHASE	POLES
	240	50	SINGLE	4
ENCLOSURE	TOTALLY ENCLOSED			
SPEED (RPM) AT RATED OUTPUT	1300	WINDING TYPE		
ROTATION	ANTI-CLOCKWISE (LEAD END)			
INSULATION CLASS	E 120	DUTY	AOM	
THERMAL PROTECTION	AUTO RESET			
RATED CURRENT	0.43	AMPS AT RATED OUTPUT		
APPLICATION	FAN DRIVE			
MOUNTING	TAPPED HOLES IN ENDSHIELDS			
BEARING & LUBRICATION	608ZZ WIDE RANGE, LONG LIFE			
SUPPLY LEAD	COLOUR	BRAIDED SLEEVING		
	LENGTH	750 mm $\pm 50 \pm 0$		
	TERMINALS	BOOTLACES		
	O.C. HOUSING	NIL		
EARTH PROVISION	VIA SUPPLY LEAD			
BASIC BUILD SPECIFICATION				
PERFORMANCE SPECIFICATION	SP54042-01/02/03			
SHAFT MATERIAL	MILD STEEL			
CONNECTION DIAGRAM	NIL	PAINT SPEC	NIL	

DO NOT SCALE PRINT



M/C 001006
 BY: MURFETTR
 DATE: 29/07/08
 M/C CHANGED THE QUANTITY OF SCREWS AND WASHERS SUPPLIED
 Note: IN PLASTIC BAGS FITTED TO LEAD FROM 3 TO 4

SPECIAL REQUIREMENTS

- 1) ATTACH TO LEAD PLASTIC BAG CONTAINING
 4 - SCREWS 3/16" BSW x 8.0mm PAN POSI HD.
 4 - SHAKEPROOF EXTERNAL WASHER 5mm I.D.
- 2) RUST PREVENTATIVE TO BE APPLIED TO MILD STEEL SHAFTS AFTER ASSEMBLY.
- 3) 6-MOTORS IN PLAIN BOX.
- 4) MAX. SCREW PENETRATION 6MM FROM FACE OF THE END SHIELD.

DIMENSIONS IN mm UNLESS OTHERWISE SPECIFIED	
GENERAL TOLERANCES	
LINEAR:	XX = ±1.0
	XX = ±0.25
	XXX = ±0.1
ANGULAR:	XX = 2°
	XXX = ±0.5°
SURFACE FINISHES MAX. 3.0 MICROMETRES	
SYMBOLS PER A.S. 1100	

This drawing remains the property of Fasco Australia Pty. Ltd. No part or parts of this drawing may be reproduced without written permission.

MATERIAL	
FINISH	
DRAWN	MURFETTR 11/01/07
CHECKED	BALCHANT 29/07/08
RELEASED	BALCHANT 29/07/08
SCALE	



1/14 Monterey Road, Dandenong, Victoria

FRAME	MOTOR - 4P 13W		DWG. NO.	REVISION
STATUS	R			
SHEET	A3			
			50D527-01CT	E