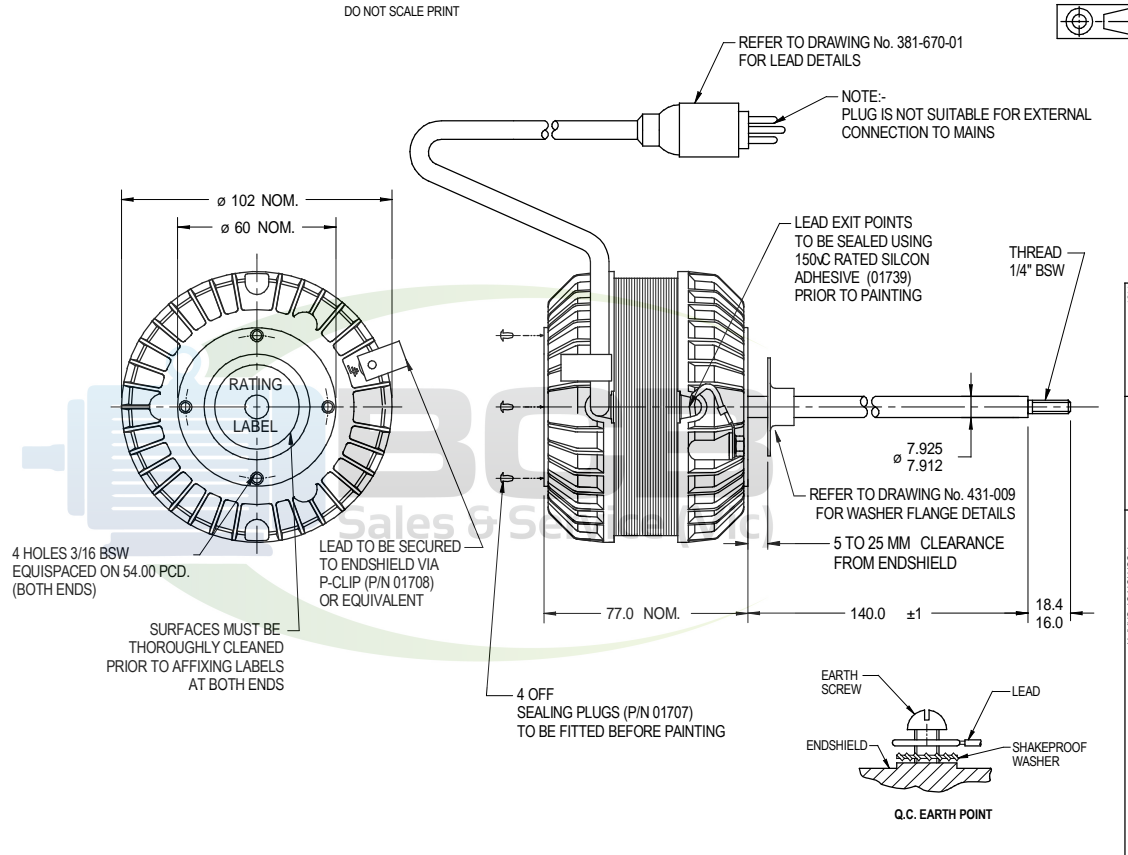


NOTE: FASCO AUSTRALIA IS HAPPY TO PROVIDE TECHNICAL ASSISTANCE TO OUR CUSTOMERS IN MANY AREAS. HOWEVER, SINCE FASCO AUSTRALIA IS NOT AWARE OF ALL DATA CONCERNING THE USE AND APPLICATION OF THIS MOTOR, THE SUITABILITY OF THE MOTOR FOR THE APPLICATION MUST BE DETERMINED BY AND IS THE RESPONSIBILITY OF THE CUSTOMER.

MOTOR SPECIFICATION

CUSTOMER	PLEASES EQUIP.			
CUSTOMER P/N				
QR No.	6488	CAPACITOR	uf / V	
POWER OUTPUT	15W	START	NIL	
MOTOR TYPE	SH/POLE	RUN	NIL	
SUPPLY	VOLTS	HERTZ	PHASE	POLES
	240	50	SINGLE	4
ENCLOSURE	TOTALLY ENCLOSED			
SPEED (RPM)	1300	WINDING TYPE		
ROTATION	ANTICLOCKWISE (DRIVE END)			
INSULATION CLASS	E 120	DUTY	AOM.	
THERMAL PROTECTION	AUTO RESET			
RATED CURRENT	0.3	AMPS AT RATED OUTPUT		
APPLICATION	FAN DRIVE			
MOUNTING	TAPPED HOLES IN ENDSHIELD			
BEARING & LUBRICATION	608ZZ WIDE RANGE, LONG LIFE			
SUPPLY LEAD	COLOUR	WHITE - PVC		
<input checked="" type="checkbox"/> MULTI STRAND	LENGTH	700 +50 -0		
<input type="checkbox"/> SINGLE CORE	TERMINALS	PLUG - 3 PIN		
	Q.C. HOUSING	NIL		
EARTH PROVISION	VIA SUPPLY LEAD			
BASIC BUILD SPECIFICATION				
PERFORMANCE SPECIFICATION				
SHAFT MATERIAL	303SS			
CONNECTION DIAGRAM	NIL	PAINT SPEC	BLACK	
SPECIAL REQUIREMENTS				
6-MOTORS IN PLAIN BOX.				

DO NOT SCALE PRINT



DIMENSIONS IN mm UNLESS OTHERWISE SPECIFIED
 GENERAL TOLERANCES
 LINEAR: X = ±1.0
 XX = ±0.25
 XXX = ±0.1
 ANGULAR: X = 2°
 XXX = ±0.5°
 SURFACE FINISHES IN MICRO METRES. MAX 3.0
 SYMBOLS - A.S. 1100

MATL			
FINISH			
DRAWN	MURFETTR	05/12/06	
CHECKED	BALCHANT	31/10/07	
RELEASED	BALCHANT	31/10/07	
SCALE			

FASCO AUSTRALIA
 ABN 76 000 010 944
 1/14 Monterey Road, Dandenong, Victoria

FRAME			
STATUS	R		
SHEET	A3		
DWG. NO.	50D521-76AT		
REVISION	C		

MIC 020308
 Date: 18/10/07
 By: MURFETTR
 MIC REMOVED MOTOR AND WINDING DETAILS ±1 TOLERANCE FOR POSITION OF SHAFT