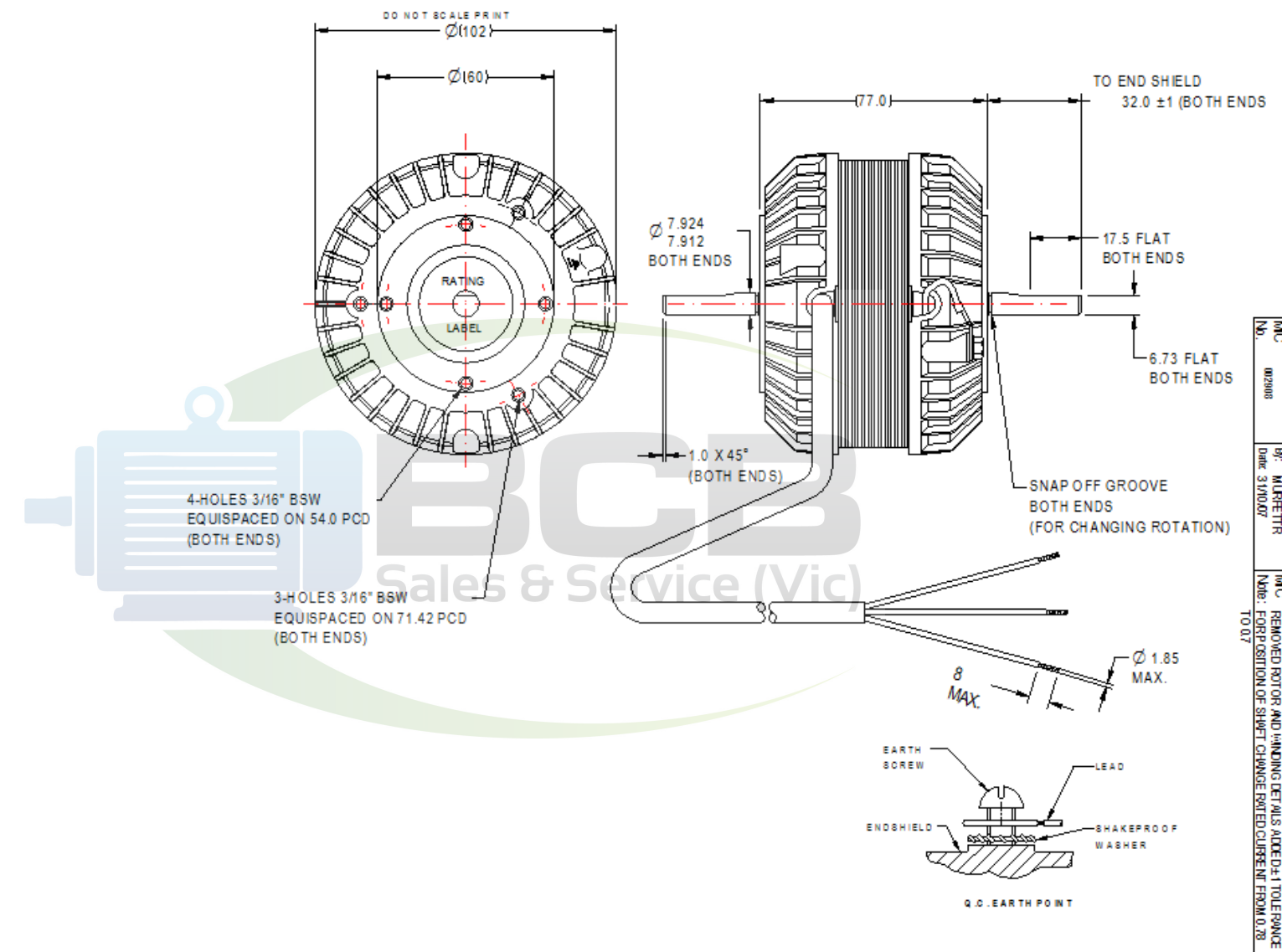


NOTE: FASCO AUSTRALIA IS HAPPY TO PROVIDE TECHNICAL ASSISTANCE TO OUR CUSTOMERS IN MANY AREAS. HOWEVER, SINCE FASCO AUSTRALIA IS NOT AWARE OF ALL DATA CONCERNING THE USE AND APPLICATION OF THIS MOTOR, THE SUITABILITY OF THE MOTOR FOR THE APPLICATION MUST BE DETERMINED BY AND IS THE RESPONSIBILITY OF THE CUSTOMER.



MOTOR SPECIFICATION

CUSTOMER				
CUSTOMER P.N.				
OR No.	CAPACITOR	V1/V		
POWER OUTPUT	40 W	START		
MOTOR TYPE	SH/POLE	RUN		
SUPPLY	VOLTS	HERTZ	PHASE	POLES
	240	50	SINGLE	4
ENCLOSURE	TOTALLY ENCLOSED			
SPEED (RPM) AT RATED OUTPUT	1300	WINDING TYPE		
ROTATION	CLOCKWISE - LEAD END			
INSULATION CLASS	E 120	DUTY	AOM	
THERMAL PROTECTION RATED CURRENT	AUTO RESET			
	0.70	AMPS AT RATED OUTPUT		
APPLICATION	FAN DRIVE			
MOUNTING	TAPPED HOLES IN END SHIELD			
BEARING & LUBRICATION	608ZZ WIDE RANGE, LONG LIFE			
SUPPLY LEAD	COLOUR	PVC GREY		
<input checked="" type="checkbox"/> MULTI STRAND	LENGTH	750 ⁺⁵⁰ / ₋₀ (45±5 STRIPPED)		
<input type="checkbox"/> SINGLE CORE	TERMINALS	BOOTLACES		
	O.C. HOUSING	NIL		
EARTH PROVISION	VIA SUPPLY LEAD			
BASIC BUILD SPECIFICATION				
PERFORMANCE SPECIFICATION				
SHAFT MATERIAL	MILD STEEL			
CONNECTION DIAGRAM	NIL	PAINT SPEC	NIL	



- SPECIAL REQUIREMENTS**
- 1) ATTACH TO LEAD PLASTIC BAG CONTAINING
 - 4 - SCREWS 3/16" BSW x 8.0mm PAN POSI HD.
 - 4 - SHAKEPROOF EXTERNAL WASHER 5mm I.D.
 - 2) RUST PREVENTATIVE TO BE APPLIED TO MILD STEEL SHAFTS AFTER ASSEMBLY.
 - 3) 6-MOTORS IN HAPPY JACKS PRINTED BOX.
 - 4) 1-ONLY INSTRUCTION SHEET 398-060-01 TO BE PLACED IN EACH SIX PACK CARTON.
 - 5) MAX. SCREW PENETRATION 6MM FROM FACE OF THE END SHIELD.

DIMENSIONS IN mm UNLESS OTHERWISE SPECIFIED	
GENERAL TOLERANCES	
LINEAR:	XX = ±1.0
	XX = ±0.25
	XXX = ±0.1
ANGULAR:	XX = 2'
	XX = 40"
SURFACE FINISHES MAX 3.0 MICROMETRES	
SYMBOLS PER A.S. 1102	
This drawing remains the property of Fasco Australia Pty. Ltd. No part or parts of this drawing may be reproduced without written permission.	

MATL			
FINISH			
DRAWN	MURFETTR	05/12/06	
CHECKED	BALCHANT	31/10/07	
RELEASED	BALCHANT	31/10/07	
SCALE			

FASCO AUSTRALIA
 ABN 76 000 010 944
 1/14 Monterey Road, Dandenong, Victoria

FRAME	MOTOR - 4P 40W		REVISION
STATUS	R	DWG. NO.	50D503-80AT
SHEET	A3		B

MAC No. 002008 By: MURFETTR Date: 31/10/07
 MAC REMOVED ROTOR AND WINDING DETAILS ADDED ± TOLERANCE
 Note: FOR POSITION OF SHEET CHANGE EXCEED CURRENT FROM 0.78 TO 0.7