



Olympia

round concrete and brass taps

100mm long x 50mm wide x 3mm or 24mm thick

Specifications

- Tap handle: 50mm dia., 50mm deep

Concrete backplates-

- Two-piece backplates: 100mm x 50mm x 25mm each
- One-piece backplate: 300mm x 50mm x 25mm

Solid brass backplates-

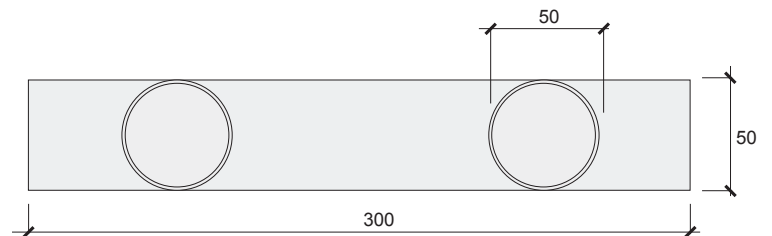
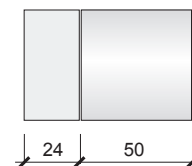
- Two-piece backplates: 100mm x 50mm x 3mm each
- One-piece backplate: 300mm x 50mm x 3mm

Finishes-

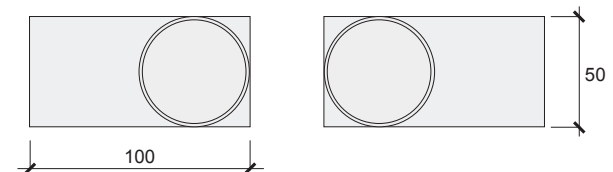
- Raw brass, sealed brass, matte black or colour plated

Backplate material-

- Raw brass/timber
- Solid timber
- Sealed brass/timber
- Matte black or colour plated/timber
- Sealed brass
- Raw brass
- Matte black/colour plated



One-piece backplate



Two-piece backplates

hello@woodmelbourne.com