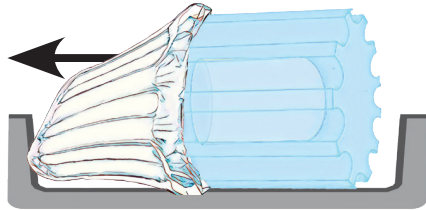


## Fluted Ice Luminary Mold Instructions, continued



G



H

8. **DEFLATE MOLD** Gently open air valve and squeeze to release the air. Lay ice-filled mold on side, and as deflating, slide fingertips in between ice and mold to help separate mold from ice. Roll mold to help deflate. **(Figure G)**

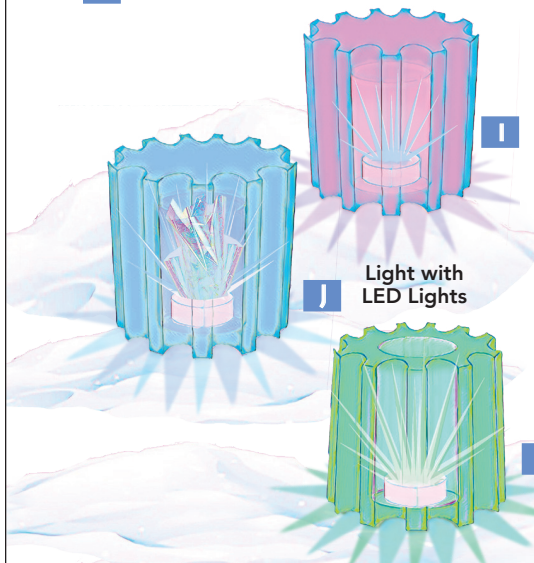
9. **RELEASE ICE** Once mold is deflated, pinch and hold bottom of mold and pull off ice. Pour out unfrozen water. Place finished ice lantern in a plastic bag in below freezing temps until ready to use. **(Figure H)**

10. **LIGHT & ENJOY** Position waterproof LED light in desired location. (Choose location where melting ice will not become a hazard.) Place ice lantern over light with the open end down. Use remote to turn on LED light and adjust color and brightness. **(Figure I)** For added fun, scrunch up mylar sheet (included) and stuff into open end of ice lantern before putting over LED light. The mylar will make the LED light go **WILD**. **(Figure J)** Display in a spot to be discovered by delighted neighbors and friends!

### ALTERNATIVE DISPLAY OPTIONS

**A1. OPEN END UP** For a different look, push LED light into snow and place ice lantern over the light with the open end up. **(Figure K)**

**A2. QUICK FLIP with Candles (not included)** Place ice lantern in desired location with the open end up and place a floating candle inside. Light and enjoy! **(Figure L)**



Light with LED Lights

Light with Candle

WINTERCRAFT.COM



### "Ice Luminary Magic Really is Magic"

*I love Wintercraft's ice lantern kits, but WOW! Jennifer Hedberg's Ice Luminary Magic book, with its gorgeous photographs and clear instructions, is really inspiring."*

— Karen B, Connecticut, USA



Includes 28 DIY projects

Learn more at  
**WINTERCRAFT.COM**

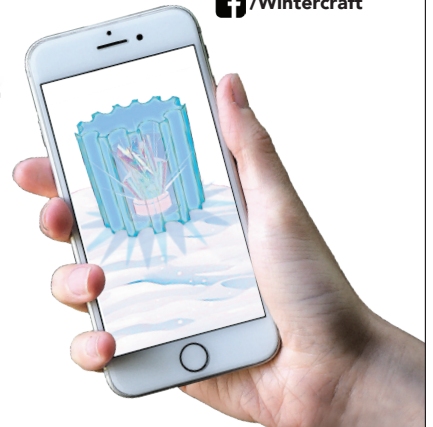


— PRO TIP —

Fully dry Fluted Mold before storing for future use.

SHARE YOUR PHOTOS!

@wintercraftcommunity  
/Wintercraft



### LED Light Instructions

- Unscrew halves of LED light to install batteries. Screw back together until cap is tight.
- Remove plastic tab on bottom of remote to activate battery.
- Point remote toward LED light and press "ON" button to sync remote with light.
- Press colored circle / "W" white.
- Choose Mode: Flash, Strobe, Fade or Smooth.
- Adjust brightness ▶



### ICE WARNING AVERTISSEMENT DE GLACE

**Warning!** Ice can be slippery, cold & heavy. When handling ice, it is best to wear water resistant gloves. If drilling, always use safety goggles. Please use caution when walking near a globe ice lantern. If you get wet, seek shelter and change clothing immediately!  
**Adult supervision recommended.**

**Attention!** La glace peut être glissante, froide et lourde lors de sa manipulation de la glace, il est préférable de porter des gants résistant à l'eau. Lors du perçage, toujours utiliser des lunettes de sécurité. S'il vous plaît soyez prudent lorsque vous marchez près d'une lanterne de glace. Si vous êtes mouillés, chercher un abris et des vêtements changement tout de suite! **La supervision des adultes est recommandée.**



Light: 3x AAA Batteries  
(Not included)  
Remote: 1x CR2025  
Battery (included)

