

A

## TEMPLATE

### The Doormat Ice Lantern

#### Sized for use in the Wintercraft® Bucket Mold

It is helpful if your final doormat piece is SLIGHTLY longer than you think you need. The more snug the fit, the more the doormat will hold itself upright in the bucket.

1. Print the pdf's at full size.  
(Note the scale marker should be 1" long)
2. Cut off 1/2" (where indicated with dashed line) along the left side of #2-#5.
3. Match up "A" from #1 to "A" on #2, and "B" from #1 to "B" on #2.  
Then tape together with clear tape.
4. Match up "C" from #2 to "C" on #3, and "D" from #2 to "D" on #3.  
Then tape together with clear tape.
5. Match up "E" from #3 to "E" on #4, and "F" from #3 to "F" on #4.  
Then tape together with clear tape.
6. Match up "G" from #4 to "G" on #5, and "H" from #4 to "H" on #5.  
Then tape together with clear tape.

**Instructions continue on #5**

  
**#1**

B

**A**

**C**

^ ^ ^ Cut along dotted line to remove 1/2" of paper ^ ^ ^

**#2**

**B**

**D**

C

E

Λ Λ Λ Cut along dotted line to remove 1/2" of paper Λ Λ Λ

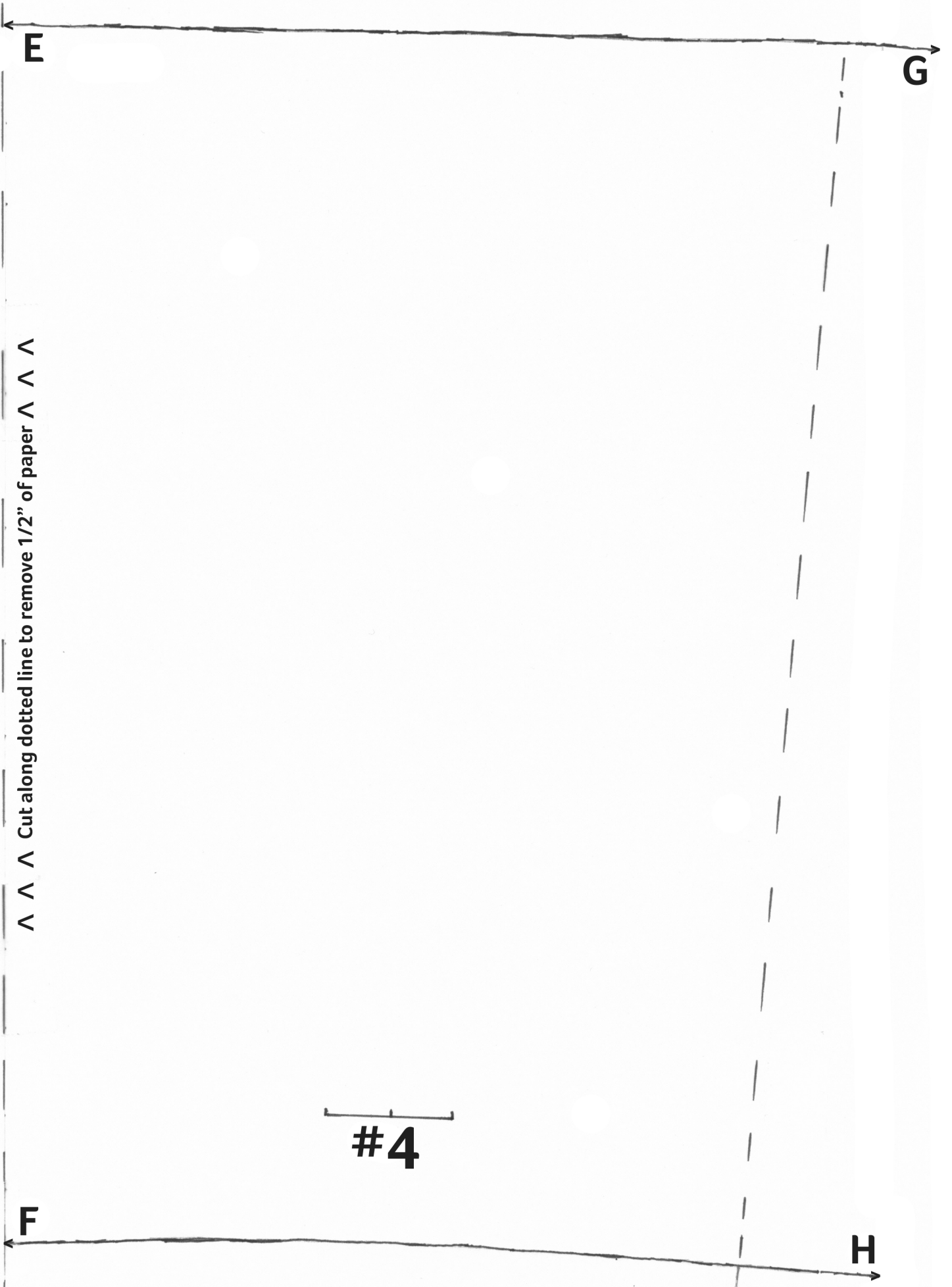
#3

D

F

Λ OUTLINE Λ

^ ^ ^ Cut along dotted line to remove 1/2" of paper ^ ^ ^



G

#5

^ ^ ^ Cut along dotted line to remove 1/2" of paper ^ ^ ^

H

Instructions continued from #1

TEMPLATE

The Doormat Ice Lantern

Sized for use in the Wintercraft® Bucket Mold

It is helpful if your final doormat piece is SLIGHTLY longer than you think you need. The more snug the fit, the more the doormat will hold itself upright in the bucket.

- 7. Cut out the template along the outline with scissors.
- 8. Lay the template on your doormat and put small pieces of duct tape along the outside of the template.
- 9. Cut the doormat inside the pieces of tape. IMPORTANT: Cut\* the doormat LONGER than you think you need and cut down to size as needed. Every door mat is different, so if you cut it longer, you can make sure that it is a snug fit.  
\*I used a Oscillating Saw with a fine blade with a scap piece of wood underneath. A strong pair of scissors would work, too.
- 10. Roll the piece of doormat up and put it into the bucket with the short side down. Unroll as you push the doormat down so the bottom edge of the doormat is in contact with the bottom of the bucket.
- 11. If the doormat is all the way to the bottom and there is some overlap, use the duct tape to mark where to cut off the extra doormat material. Always leave more than you think you need as once you have cut it off, you can't add it back on. Consider cutting of small amounts at a time. It is ok to push it to fit as a snug fit will help to keep it upright in the bucket.
- 12. Make a ice lantern according to the directions on page 113 of Ice Luminary Magic.

Enjoy the Glow!  
The Ice Wrangler

DISCLAIMER: Each doormat is different. While every effort has been made to ensure the accuracy of this PDF, the author and publisher disclaim any liability to any party for any loss, injury, damage, or disruption. Use caution, care and good judgment when following the procedures in this PDF.