

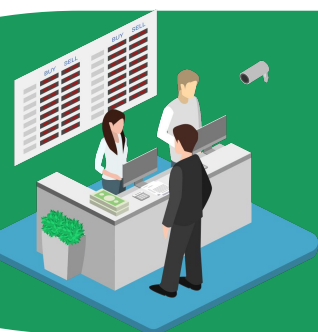


Eddie's Hang-Up Display Ltd. is a one stop shop for all your dispensary needs. We have the **experience** and product range necessary to **open a cannabis retail store** from scratch or redesign your existing space. In this guide you will learn about the **budget** required for opening a dispensary to meet your needs, the **merchandise and displays** required, and the estimated **timeline** from inquiry to opening.

Cannabis Dispensaries and Stores

BUDGET

How much will it cost for fixtures, display accessories and operational supplies? Compare the cost of display systems and configurations. Use the cost calculator to estimate the cost of a complete fit out.



MERCHANDISING

Which displays to use and how many of them you will need. Use the experience gained from opening hundreds of cannabis dispensaries and retailers.

PRODUCTS

Solutions for flower, edibles, extracts and accessories. Choose from stock and custom solutions.



TIMELINE

What information is required to determine how much time it will take from inquiry to opening. Design to delivery can take as little as 1 to 2 weeks.

Don't forget to include all the necessary physical distancing tools

SHOP IN A BOX

- Maple (also available in Cherry, White and Black)



Counters, showcases, tables sign holders, cannabis displays, general store supplies and packaging

\$24,806.95
Retail Space
800 sq. ft.



Use the cost calculator to modify to your unique needs.

SHOP IN A BOX



Counters, showcases, tables sign holders, cannabis displays, general store supplies and packaging

\$29,410.20

Retail Space
800 sq. ft.



Use the cost calculator to modify to your unique needs.

SHOP IN A BOX

- Maple (also available in Cherry, White and Black)



a [214192](#) **Maple Double Wide Lit Glass Towers**
Great for accessories with glass on all sides and puck lights built in the top.

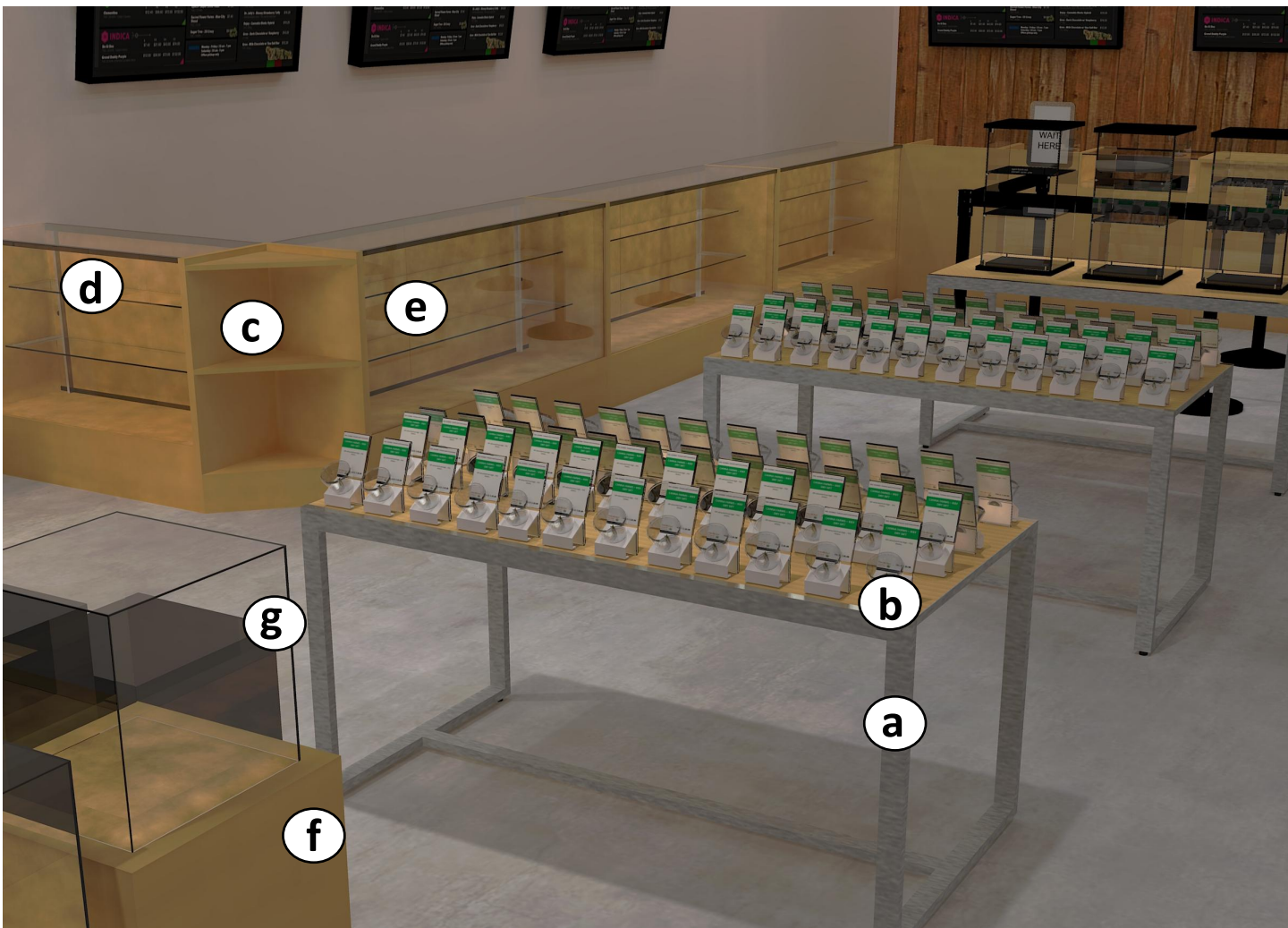
b [215060](#) **Maple Set of Three Podiums**
Combine with the

c [165057](#) **Acrylic Cube** secured to the podiums with two-way metal connectors [199100](#).

d [214204](#) **Maple Showcase 4' Long**
Sliding panels allow access from the rear of the showcase.

SHOP IN A BOX

- Maple (also available in Cherry, White and Black)



a [215053 Maple Large Table](#) A great choice for displaying the **b** [Aroma Orb™ 133000](#) cannabis display jar and choice of stands and sign holders. See the Merchandising section to calculate the quantity of Orbs on the display surface.

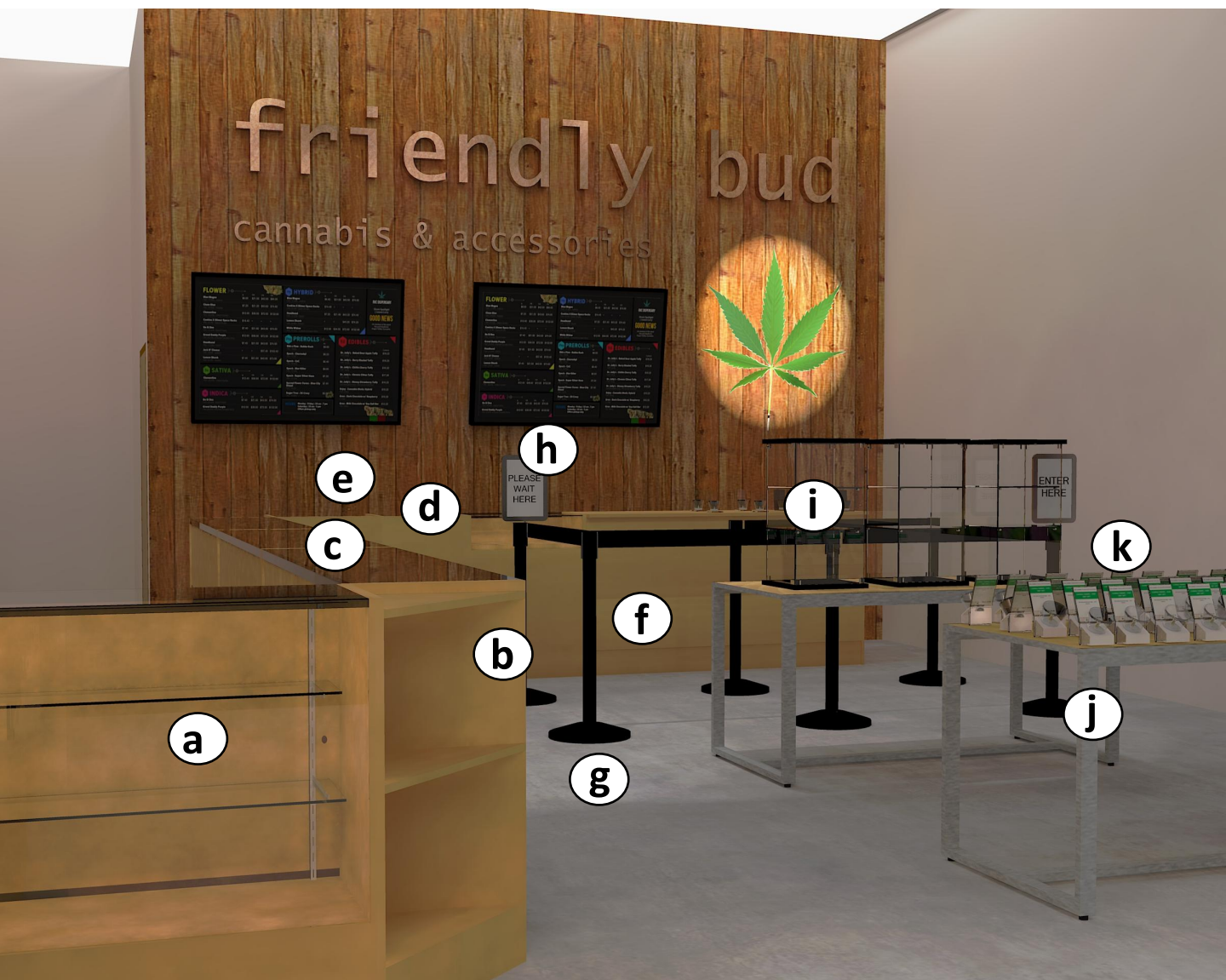
c [214211 Maple Showcase Corner Unit](#)
A great way to combine the showcases together. As the image, we have combined it with **d** [214204 Maple showcase 48" Long](#) and **e** [214206 Maple showcase 70" Long](#)

f [215060 Maple Set of Three Podiums](#)
Combine with the **g** [165057 acrylic cube](#) secured to the podiums with **two-way metal connectors 199100**



SHOP IN A BOX

- Maple (also available in Cherry, White and Black)



a [214204](#) Maple Showcase 48" Long
 Together with **b [214206](#) 70"** version of the same maple showcase with **c [214211](#)** full corner unit, **d [214255](#)** combo counter 4', **e [214210](#)** locking cash stand 2' and **f [214209](#)** 6' cash wrap.

g [199311](#) Black Belted Stanchions
 With **h [199315](#)** aluminum sign holders to guide patrons through the queue.

i [165065](#) Glass Counter Case
 Together with the **j [215053](#)** Maple Large Table creating a feature display that is locked.

j [215053](#) Maple Large Table
 A great choice for displaying the **k [Aroma Orb™ 133000](#)** cannabis display jar and choice of stands and sign holders.

SHOP IN A BOX

- Maple (also available in Cherry, White and Black)



a [214255](#) Combo Counter 48" Long

Together with [214210](#) locking cash stand 2' and [214209](#) 6' cash wrap create a multi-functional counter for transactions and impulse merchandising.

c [214206](#) Maple Showcase 70" Long

Provides a high capacity display at a great price point. Add risers, easels and sign holders to pull in and educate patrons.

d [199315](#) aluminum signholders

With [199311](#) black belted stanchions to guide patrons through the queue

f [165065](#) Glass Counter Case

Together with the [215053](#) Maple Large Table creating a feature display that is locked.

SHOP IN A BOX



a [214178](#) set of three podiums, black
 Arranged in a multitude of clusters to suit your unique space. Combined with **b [165065](#)** glass counter case. These glass counter cases are perfect to curate displays of single or multiple merchandise categories of cannabis or accessories.

d [214300](#) clear vision corner glass display case
 Clear vision corner case. Six viewing surfaces framed with brushed aluminum extrusions. Interior is accessible from two sliding white doors with built-in locks. Equipped with two shelves measuring 18" deep. Showcase measures 20" deep x 59" wide (32" wide -back x 48" wide - front) x 38" high.

c [214315](#) wall mount glass display case
 A narrow clear vision display case with two lights in the top to make merchandise stand out. A sleek think high end look to accentuate the merchandise on display.

e [165066](#) aluminum countertop display case
 A 14" deep x 12" wide x 27" high sleek silver aluminum frame with tempered glass. 3 glass shelves. Locking access door

f [214308](#) Clear Vision Glass Towers
 Great for accessories with glass on all sides. Add LED lights, risers and sign holders to make the high-end swag pop.



a [214145](#) Wrap Counter 48" wide
Interior is accessible from two sliding temper glass doors with built-in lock. Equipped with four shelves measuring 18" deep. Trophy case measures 20" deep x 48" wide 72" high.

b [Pay Point](#) with Glass Display Drawer
48" 2 in 1 counter is available in maple, black and cherry laminate. It features a cash stand and glass showcase all-in-one

c [215053](#) Brushed Chrome Large Table
Add your desired finish to this 30" x 60" display table. Shown here with Carrera marble.

d [214306](#) Clear Vision Case with Black Base
Interior is accessible from two sliding white doors with built-in locks. Joins seamlessly with **e [214300](#)** clear corner display.

SHOP IN A BOX



a [214308](#) Clear Vision 48" Wide Tower

Interior is accessible from two sliding temper glass doors with built-in lock. Equipped with four shelves measuring 18" deep. Trophy case measures 20" deep x 48" wide 72" high.

b [214306](#) Clear Vision Counter

A large capacity display case with 18 display FT. Add [214392](#) LED lighting to make the merchandise pop. Take advantage of Eddie's extensive range of risers, easels and sign holders

c [215053](#) Brushed Chrome Large Table

Add your desired finish to this 30" x 60" display table. Shown here with Carrera marble.

SHOP IN A BOX



a [214178](#) Black Podium Set

A set of three black podiums in varied heights effective in shopfront or point of entry. with **b** [165065](#) glass counter case. These glass counter cases are perfect to curate displays of single or multiple merchandise categories of cannabis or accessories.

k [Kupo](#) Encapsulates a Category

Free standing or from floor to ceiling, Kupo supports display cases, surfaces and graphics. Combine consumables side by side with all their associated paraphernalia to maximize cross merchandising.

w [215316](#) Sleek Thin Wallmount with Lighting

Five display levels in a slim rounded look to accentuate a new product release.

EDDIE'S AROMA ORB™



The Aroma Orb™ was developed by Eddie's with input from industry experts, in order to create a superior sensory cannabis display.

- 5x **magnifying lens** (37mm diameter).
- 75mm diameter orb constructed of medical-grade plastic for clear **unobstructed viewing**.
- Embedded flexible **aroma port scent plug** that won't fall out and get lost.
- Hidden **security features** in base to prevent unauthorized access.
- No unsightly anti-tamper security seals required.
- **Fast loading** and reloading of cannabis samples.
- **Tether** ready.

DISPLAYS, CURRENT STOCK AND CUSTOM PRODUCTION



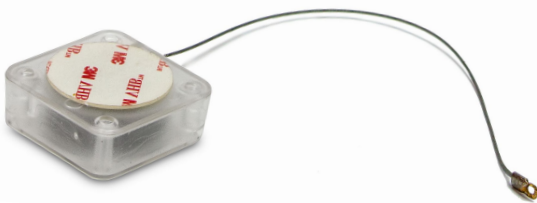
133000 Aroma Orb™



133010 Clear Acrylic Holder



133012 metal stand



133015 Security Tether



133016 White Acrylic Stand

133017 Clear Acrylic Signholder



Custom Displays:

Take ideas from the napkin to render. Decide quickly and leave enough time for production.

PIPES, VAPES & BONGS

165019 Pipe Rack Stand



163200 Black Tray For c163340



165016 Vape Acrylic Display Stand



c163340 Pipe Tray Velvet



LET US BRING YOUR UNIQUE VISION TO REALITY WITH CUSTOM FIXTURES, DISPLAYS AND PRINTED PACKAGING



Custom Capabilities:

- Fixtures
- Displays
- Sign holders
- Packaging



Open Quickly with stock fixtures, displays and the operational supplies. From inquiry to store opening in 1 to 2 weeks.

Over 150,000 sq. ft. warehousing holding deep inventory levels of Eddie’s complete range of over 3500 in stock standard items. Shipping from Vancouver, Edmonton and Toronto.

Eddie’s sales support hours are 8:30 A.M. Eastern until 8 P.M. Eastern. Count on our longer service hours to get your questions answered quickly.

The Process From inquiry to store opening	Here is what you need to provide:	Days
<p>- Shop in a Box – If you have your complete order ready to go.</p> <p>If your order is complete and ready to go, send it to our Sales Support team to review and confirm prices.</p>	<p>Fill out an online order or your opening list based on the Eddie’s Cost Calculator.</p> <ul style="list-style-type: none"> • Advise the date to schedule delivery and indicate if there is a loading dock to receive the goods. 	1
<p>- Shop in a Box – if you need Eddie’s to assist.</p> <p>Work with our Account Managers and Sales Support team to create a unique store opening list. Use Eddie’s experience from opening hundreds of cannabis dispensaries and retail stores. From store opening to ongoing store operations, Eddie’s has usage data for small and large retail stores.</p>	<ul style="list-style-type: none"> • Accurate floor plan, with a fixture layout if you have it. • An approximate budget of all loose fixtures, displays and operational supplies. • Projected opening date. • List of the merchandise categories. • A summary of the interior finishes to match with Eddie’s available stock finishes. • Advise the date to schedule delivery, indicate if there is a loading dock to receive the goods or if inside the building is required. 	2 +
Quote – Sign Off – Payment	<ul style="list-style-type: none"> • Sign off the quote terms and conditions. • Pay via Visa, MasterCard, e-transfer or EFT. Orders are accepted upon sign off and receipt of payment. 	1+

TIMELINE

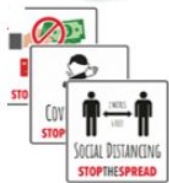
The Process From inquiry to store opening	Here is what you need to provide:				Days
Order Processing – complete store opening	<ul style="list-style-type: none"> Advise if you require tracking information and confirm your team is on site to receive the goods. 				1-3
Order Processing – partial store or smaller	<ul style="list-style-type: none"> Advise if you require tracking information and confirm your team is on site to receive the goods. 				1-2
Production - Domestic	The time is dependent on the quantity, current production capacity and availability of materials.				14 - 28
Production – Overseas	The time is dependent on the quantity, current production capacity and availability of materials.				90 - 120
Shipping – Transit Time. The first order of shipping is from the nearest Eddie’s location (Toronto, Edmonton and Vancouver). Take advantage of over 150,000 sq. ft. of stock to fulfill your large requirements.	Transit Times From:	Vancouver	Prairies	Toronto	Maritimes
	Vancouver	1	2	4-6	6-8
	Edmonton	2	1	3-5	5-7
	Toronto	4-6	3-5	1	2-3
Receiving	<ul style="list-style-type: none"> Meet delivery up arrival and inspect all goods received. Take note of any potential damage on the waybill upon receiving. Most shipments include acrylic and glass and damage may be concealed. Take photos of any damage and keep the packaging for inspection. 				
Assembly & Installation To minimize shipping costs, most of Eddie’s products are shipped knocked down and require some assembly.	DIY – up to 1000 sq. ft.				1 – 2
	Installation Contractor – up to 1000 sq. ft.				1
	DIY – approx. 2000 sq. ft.				2 – 4
	Installation Contractor – approx. 2000 sq. ft.				2 - 3
The above process and timelines are for estimating and planning. The exact time will depend on your unique requirements.					





SOCIAL DISTANCING QUEUE MANAGEMENT

SIGNAGE | STANCHIONS | CASH DESK SHIELDS



Inventoried Products

Everything For The Retail Store®

Our product line has over 3500 different stocked items including packaging, hangers, showcases, mannequins and display forms, tags and tagging supplies, acrylics, pricing supplies, grids and slatwall supplies, security products, literature holders, easels, signs and sign holders, metal floor and wall racking.

Check our online catalog at Eddies.com to learn more.



Custom Fixtures and Displays

Racks, tables, counters, POP, sign holders, counter/floor fixtures and display accessories. Mixed material – metal, wire, wood, glass and acrylic.



Custom Packaging

Promote your brand, store or business with custom printed packaging. Check out our stock plastic bags, paper shoppers and boxes and let us help you make these into a powerful brand statement.



Custom Hangers

Your business is unique and your hangers should be too. We'll help you to determine the type, shape, dimensions and features best suited for you. Contact us today to speak with a custom hanger specialist.



Excellent Customer Service



24/7 Shopping

© COPYRIGHT 2020. All rights reserved. No reproduction of this brochure may be made without the express prior written permission of Eddie's Hang-Up Display Ltd.

ALCANNA

AURORA



CITY CANNABIS CO.

HOBO

Plantlife CANNABIS

CANNA Cabana

GREEN NATION NATURALS

RARE CANNABIS EXTRACT



PEACE PIPE CANNABIS CO.

HIGHLIFE

PRAIRIE RECORDS

SPIRITLEAF



Please order online at Eddies.com



Call us at: 1-877-433-3437 to speak to one of our knowledgeable sales associates.

2
EDDIE'S
HANG-UP DISPLAY LTD.