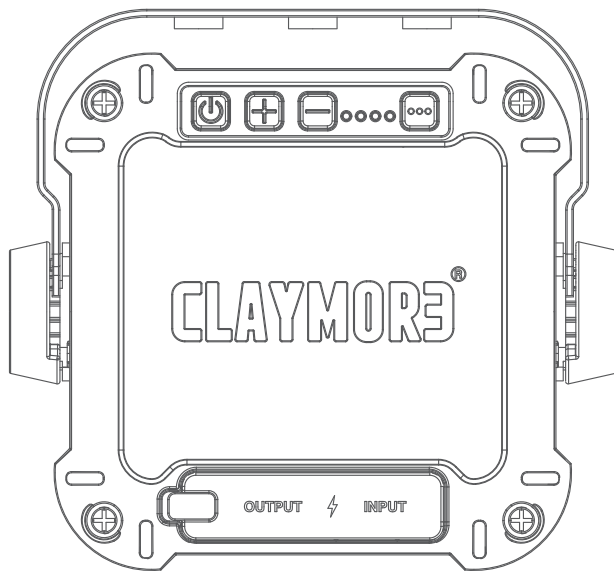


CLAYMORE³ ULTRA II 3.0

CLAYMORE ULTRA II 3.0 M/X

CLC2-1300(BK/RD) / CLC2-2300(BK/RD)



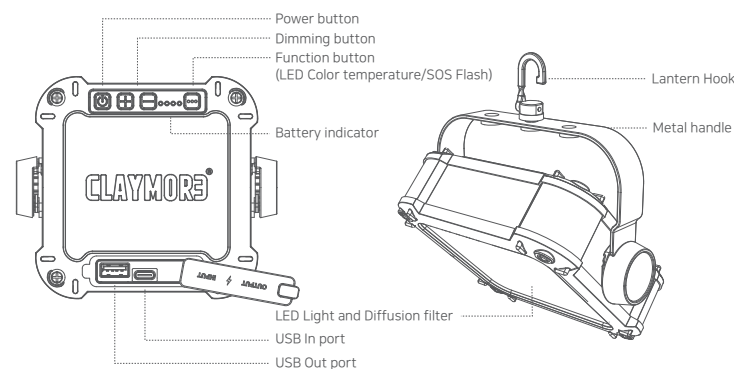
User Manual

This portable light contains a Li-ion battery. Please follow the user manual before use. If any abnormality is found in the product, discontinue use and contact the dealer or a service center where the product was purchased. Any modifications of this product will void the warranty. Misuse of CLAYMORE products may cause user harm.

1. Caution

- ① Do not use near high temperatures such as fires or heating equipments. It may cause explosion or ignition.
- ② This product is water resistant. However, if left in the rain for a long time, it may cause malfunction. If the product gets soaked, please quickly wipe it off.
- ③ Do not store or use in vehicles exposed to direct sunlight. It may cause explosion and malfunction.
- ④ Do not touch the light source directly as it may become very hot during use. Use handle to carry out.
- ⑤ Do not use if it exceeds the operating temperature range (-10 °C to 40 °C).
- ⑥ Do not use external power other than USB 5V. It may cause heat and ignition.
- ⑦ Please do not place in the reach of infants. It may cause swallowing of parts or injury.
- ⑧ Adult supervision is necessary when used by children. Misuse of light may cause injury or electric shock.
- ⑨ Do not insert any metal parts into the terminal block of the connector. It may cause heat, explosion or electric shock.
- ⑩ Do not disassemble or modify the product.
- ⑪ Do not touch the connector with wet hands. There is a danger of electric shock.
- ⑫ After use, be sure to turn off the power.
- ⑬ If the product is dropped or experiences physical shock, damage may be accumulated inside the product and unexpected malfunction may occur even during normal use. Be careful not to apply physical shocks to the main unit.

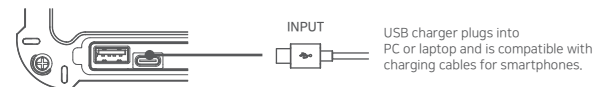
2. Components



3. Operation

● Charging

- 1) As shown in the figure, open the cover and connect the USB cable to the charging port. Charging time may vary depending on battery capacity and external environment.



※ Please charge with the supplied USB cable with 5V 2A / 9V 2A / 12V 1.5A smart quick charger.

- 2) When the product is being charged, the battery level indicator flickers. If the light is not flicking and all the lights are on, it indicates that the battery has been fully charged.

※ When Charging		※ When Operating	
Battery Indicator	Charging	Battery Indicator	Charging
○ ○ ○ ○	0~25%	○ ○ ○ ○	0%
● ○ ○ ○	25~50%	● ○ ○ ○	0~3%(Flickers)
● ● ○ ○	50~75%	● ● ○ ○	3~25%
● ● ● ○	75~100%	● ● ● ○	25~50%
● ● ● ●	Fully Charged	● ● ● ●	50~75%
	Flickers	● ● ● ●	75%~
	Stop		

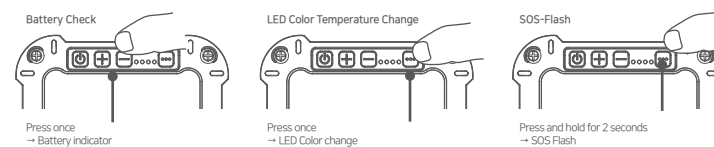
※ When the battery capacity is less than 4%, Battery check and power bank functions may not activate.

● Operation

1. On / Off: Press **⏻** shortly to turn on light. Repeat to turn off light.
2. Step dimming: Press **⏻** **⏻** button to sequence to adjust brightness in 5 steps. Stepless Dimming: Press and hold **⏻** **⏻** button to adjust brightness.
3. Battery level check: Press **⏻** button once in power ON or OFF status, the battery level is displayed in 4 steps of LED quantity.
4. LED Color Change: When the power is ON, pressing **⏻** function button once enables adjusting the light color in three steps in order of Warm > Bright > Cool

Warm	LED light with low color temperature, warm light feels like ordinary gas lantern
Bright	LED light with a neutral color of daylight and light bulb and comfortable feeling
Cool	LED light with high color temperature, cool light feels like ordinary fluorescent light

5. SOS-flash: Press and hold **⏻** button for 2 seconds from ON states to activate the SOS distress signal. Press **⏻** button once again to stop SOS flash.



5. In Case of Malfunction

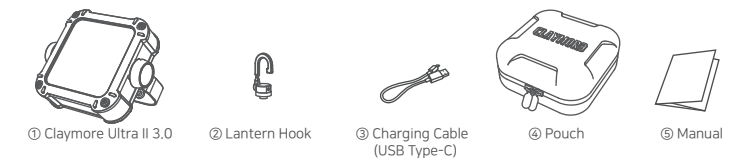
* If there is something wrong with the product, please check the following first.

1. If it does not activate, check the charging status.
2. If the external device cannot be charged, check the On state of the function button

6. Specification

Product name	CLAYMORE ULTRA II 3.0M	CLAYMORE ULTRA II 3.0X
Model name	CLC2-1300(RD/BK)	CLC2-2300(RD/BK)
LED color temperature	Warm : 3000K , Bright : 4200K , Cool : 6200K (±15%)	
Brightness (lumen)	40~1,200 Lm	50~2,200 Lm
Run Time	10~80hour	15~150 hour
Size	125×115.6×39.8mm	125×115.6×55.8mm
Weight	465g	675g
Battery type	Li-ion	Li-ion
Battery capacity	3.6V 11,600mAh	3.6V 23,200mAh
Charging time	6 hour (Quick charge adapter)	8 hour (Quick charge adapter)
INPUT	USB 5V 2A / 9V 2A / 12V 1.5A	
OUTPUT	5V 2A / 9V 2A / 12V 1.5A	
Origin	MADE IN KOREA	

7. Contents



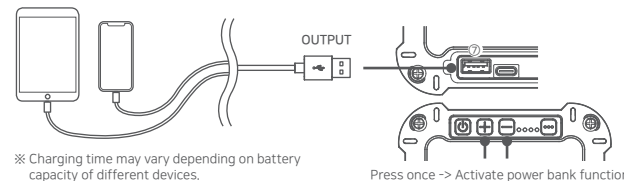
⚠ Caution for long-term storage

- * If the battery is completely drained, the battery indicator might not flash. If this happens, plug the USB cable back in or press the button to turn the battery indicator on again.
- * For long-term storage, fully recharge the battery. (Repeat every six months)
- * Please keep in mind that if stored below -10°C the battery life may be affected.
- * Please keep in a dry place without moisture.

● Power Bank Function

Claymore Ultra+ II model offers smart quick charge. Connect various devices with USB cable will automatically start charging. (On status : Battery indicator turns on)

If power bank is not working, press **⏻** or **⏻** button once to activate it. (5V charge)



4. Instructions

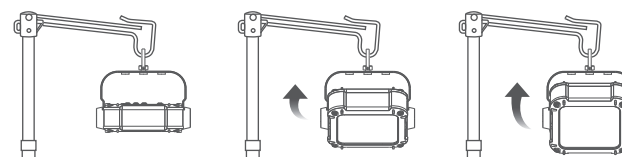
● When making the lantern stand up on a flat surface

- 1) You can place the lantern vertically or horizontally when configuring the lantern on a flat surface
- 2) Turn the **Ⓜ** metal handle to adjust the angle of lighting and place it on a flat surface to obtain desired lighting direction



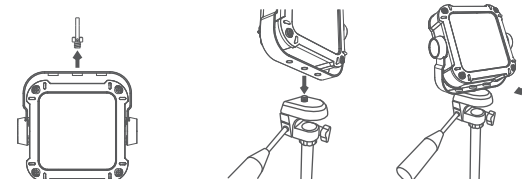
● When hanging on a lantern hook or string

- 1) Turn metal handle to adjust the angle of light in for the desired direction



● When mounting the lantern on camera tripod

- 1) Unscrew lantern hook from handle, then mount the handle wire onto the camera tripod to fix it.
- 2) Adjust the angle of the handle wire or the direction of the tripod to illuminate the desired spot.



Warranty

Item	CLAYMORE ULTRA II 3.0M	CLAYMORE ULTRA II 3.0X
Model No.	CLC2-1300(RD/BK)	CLC2-2300(RD/BK)
Seller		
Date of Purchase		

1. Thank you for purchasing CLAYMORE series of Prism Co., Ltd.
2. This product has passed strict quality control tests. If the product is not functioning properly, please contact an authorized service center.

Free Service

- 1) Failure of the product under normal operating conditions during the warranty period will be repaired by Prism or authorized service center on free of charge. Some shipping or handling charges may be involved.
- 2) Warranty period: 1 year

Charged Service

- 1) Damage caused when the warranty period is over.
- 2) Damage caused due to the user's mishandling, abuse, or improper operation.
- 3) Damage caused by arbitrary or personal repair or disassemble in unauthorized service center.
- 4) Damage from input electricity or cable defect.
- 5) Damage caused by natural disaster.

CLAYMORE³

Prism Co., Ltd.
101-1501, Chunui-Technopark, Bucheon-ro 198 Road, 36, Bucheon-si, Gyeonggi-do, Korea
www.claymorelight.com · www.prismlight.co.kr · info@prismlight.co.kr